

Converting Colors

HunterLab(58.3647, 6.8440,
19.6665)

Have a look what the booklet for
HunterLab(58.3647, 6.8440,
19.6665) contains.

HunterLab(58.2573, 7.0671, 19.5144)	3
<i>Conversions</i>	4
<i>Details</i>	6
<i>Harmonies</i>	12
<i>Previews</i>	24
<i>Color Blindness Simulation</i>	28
<i>CSS Examples</i>	31

Color

**HunterLab(58.2573, 7.0671,
19.5144)**

Conversions

Conversions Part 1

Format	Color
Hex	C09573
RGB	192, 149, 115
RGB Percent	75%, 58%, 45%
CMY	0.2471, 0.4157, 0.5490
CMYK	0.00, 0.22, 0.40, 0.25
HSL	26°, 38%, 60%
HSV	26°, 40%, 75%
XYZ	35.5802, 33.9391, 20.8953
YIQ	157.9810, 36.5420, -1.4580

Conversions

Conversions Part 2

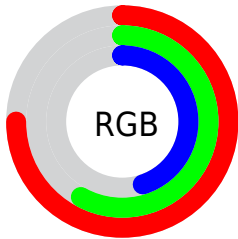
Format	Color
RYB	192, 176, 115
Decimal	12621171
CIELab	64.92, 11.58, 24.15
CIELCh	65, 26.781, 64.378
Yxy	33.9407, 0.3935, 0.3754
Android (android.graphics.Color)	4290811251 (0xFFC09573)
YUV	157.9810, -21.1896, 29.8347
Hunter-Lab	58.2573, 7.0671, 19.5144

Details

The HunterLab color $58.2573, 7.0671, 19.5144$ is a light color, and the websafe version is hex $CC9966$. A complement of this color would be $56.4829, -7.7949, -17.6795$, and the grayscale version is $58.5400, -3.1235, 3.1806$.

A 20% lighter version of the original color is $81.1332, 7.0846, 23.4014$, and $38.0093, 7.0621, 15.5048$ is the 20% darker color. If you saturate the color by 10%, you get $55.0508, 10.5640, 22.2400$, and if you desaturate by 10%, it is $61.6279, 3.8910, 16.2734$.

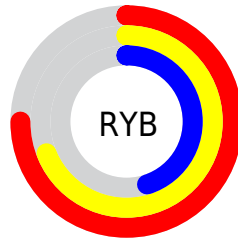
Distribution



Red (75%)

Green (58%)

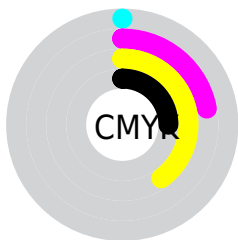
Blue (45%)



Red (75%)

Yellow (69%)

Blue (45%)

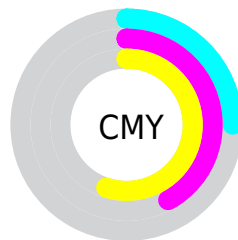


Cyan (0%)

Magenta (22%)

Yellow (40%)

Black (25%)



Cyan (25%)

Magenta (42%)

Yellow (55%)

Brightness & Saturation Gradients

These gradients show how the HunterLab color 58.2573, 7.0671, 19.5144 changes by changing the brightness by 10 percent. The first figure shows a shift by +10% for each color and the second figure -10%.

Similar to the brightness gradients but the following saturation gradients show a change of the HunterLab color 58.2573, 7.0671, 19.5144 by changing the saturation by 10% instead.

■ 58.2573, 7.0671,
19.5144

■ 58.2573, 7.0671,
19.5144

178.8485, 4.9832,
35.8560

■ 47.7997, 7.0180,
17.5115

■ 81.1428, 6.9569,
23.3396

■ 38.0544, 6.8926,
15.4188

■ 93.4978, 6.8151,
25.1884

■ 29.0796, 6.6764,
13.2039

■ 106.4231, 6.6211,
27.0076

■ 20.9481, 6.3523,
10.8162

119.8946, 6.3788,
28.8042

■ 13.7587, 5.8953,
9.1583

133.8909, 6.0913,
30.5835

■ 7.3768, 6.4468,
5.1638

148.3931, 5.7613,

0.0000, NaN, NaN

32.3497

0.0000, NaN, NaN

163.3841, 5.3913,
34.1062

0.0000, NaN, NaN

■ 58.2573, 7.0671,
19.5144

■ 58.2573, 7.0671,
19.5144

■ 55.0508, 10.5640,
22.2400

■ 61.6279, 3.8910,
16.2734

■ 52.0204, 14.3958,
24.3882

■ 65.1437, 1.0275,
12.5718

■ 49.1850, 18.5535,
25.9027

■ 68.7926, -1.5460,
8.4627

■ 46.5625, 23.0099,
26.7377

■ 72.5631, -3.8514,
3.9926

■ 44.1702, 27.7084,
26.8755

■ 76.4445, -5.9113,
-0.7979

■ 42.0361, 32.4687,
26.4709

■ 80.4277, -7.7474,
-5.8735

■ 84.5047, -9.3803,
-11.2041

■ 88.1551, -13.6836,
-9.5486

■ 91.6682, -19.0688,
-5.0395

Harmonies

Analogous

The Analogous color harmony consists of three colors that are next to each other on the color wheel.



58.2587, 16.8959, 14.1232



58.2573, 7.0671, 19.5144



58.2587, -4.8395, 20.8972

Triad

The Triadic color harmony groups three colors that are evenly spaced from another and form a triangle on the color wheel.



58.2587, 7.0647, 19.5152



58.2587, -24.1200, 1.4935



58.2587, 10.3100, -17.6864

Complementary

The Complementary color scheme is a pair of colors which are on the opposite of each other on the color wheel.



58.2573, 7.0671, 19.5144



56.4829, -7.7949, -17.6795

Split Complementary

Split-complementary colors differ from the complementary color scheme. The scheme consists of three colors, the original color and two neighbors of the complement color.



58.2587, -1.3634, -22.8218



58.2573, 7.0671, 19.5144



58.2587, -20.7375, -10.4321

Square

The Square scheme is like the rectangle color scheme, but the four colors are evenly spaced on the color wheel.



58.2587, 7.0647, 19.5152



58.2587, -22.2527, 11.7813



58.2587, -12.6342, -19.9333



58.2587, 18.8721, -6.9939

Rectangle

The Rectangle color scheme consists of four colors that form a rectangle on the color wheel.



58.2573, 7.0671, 19.5144



58.2587, -12.2147, 19.6508



58.2587, -12.6342, -19.9333



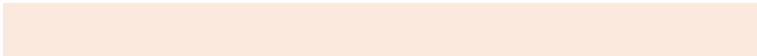
58.2587, 6.5871, -20.2072

Sweetspot

The Sweet Spot groups the original color and five complimentary colors.



58.2587, 7.0647, 19.5152



91.5608, -1.3882, 12.5891



50.9497, 30.2895, -6.0514



42.1075, -0.4373, 6.1748



98.8636, -5.2751, 5.3714



45.2661, -2.4153, 2.4594

Same Dimension

The Same Dimension uses a secret algorithm to generate beautiful new colors.



58.2587, 7.0647, 19.5152



74.6659, 13.5658, 29.4907



69.2303, -11.3802, 28.5690



32.8535, -0.8196, 3.8761



34.6991, 26.0971, 21.8383



8.1078, 3.3753, 5.0551

Inverse Universe

The Inverse Universe completely reimagines the original color for something new.



56.4829, -7.7949, -17.6795



71.7894, -10.2921, -30.5713



45.7341, 10.9736, -36.2774



32.6494, -2.5508, -0.4190



31.3425, 2.2929, -44.1252



7.4833, -1.1383, -6.8961

Previews

White Background



This preview shows how the HunterLab color 58.2573, 7.0671, 19.5144 looks on a white background.

Color Contrast Check

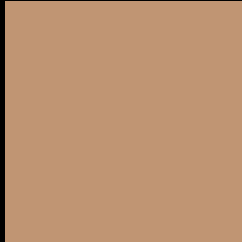
Large Text (above 18pt) WCAG AA × Fail

Any Text WCAG AA × Fail

Large Text (above 18pt) WCAG AAA × Fail

Any Text WCAG AAA × Fail

Black Background



This preview shows how the HunterLab color 58.2573, 7.0671, 19.5144 looks on a black background.

Color Contrast Check

Large Text (above 18pt) WCAG AA ✓ Pass

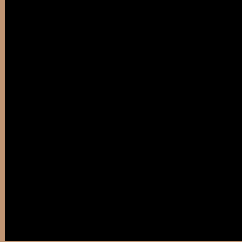
Any Text WCAG AA ✓ Pass

Large Text (above 18pt) WCAG AAA ✓ Pass

Any Text WCAG AAA ✓ Pass

If you want to check with other color combinations, try the [Color Contrast Checker](#).

HunterLab 58.2573, 7.0671, 19.5144 Background



This preview shows how black text looks on a background with the HunterLab color 58.2573, 7.0671, 19.5144.



This preview shows how white text looks on a background with the HunterLab color 58.2573, 7.0671,

Color Blindness Simulation

Color vision deficiency is a very complex topic, and I could not describe the different causes any better than Wikipedia does, so if you want to learn more, you should check out their [article about color blindness](#).

Dichromacy



Original Color

58.2573, 7.0671, 19.5144

Protanopia

58.4984, -4.9763, 18.2704

Deuteranopia

58.2545, 4.2415, 19.4624



Tritanopia

58.3514, 16.1316, 4.7291

Trichromacy



Original Color

58.2573, 7.0671, 19.5144

Protanomaly

58.3933, -0.9366, 18.5626

Deuteranomaly

58.1973, 5.4654, 19.4324

Tritanomaly

58.3552, 12.6409, 10.9711

Monochromacy



Original Color

58.2573, 7.0671, 19.5144

Achromatopsia

58.4734, -3.1200, 3.1770

Achromatomaly

58.2595, -0.2905, 9.8503

CSS Examples

Text

The CSS property to change the color of the text to HunterLab 58.2573, 7.0671, 19.5144 is called "color". The color property can be set on classes, ids or directly on the HTML element.

This example shows how text in the color `rgb(192, 149, 115)` looks like.

```
.text, #text, p{  
    color:rgb(192, 149, 115)  
}
```

If you want to add a text shadow in that color use the text-shadow property, you can generate a text shadow directly with our [CSS Text Shadow Generator](#).

Here you see how black text with a 4 pixel rgb(192, 149, 115) colored shadow looks like.

```
.shadow{ text-shadow: 4px 4px 2px rgb(192, 149, 115) }
```

Border

The CSS property to change the border of an element to HunterLab 58.2573, 7.0671, 19.5144 is called "border". The border property can be set on classes, ids or directly on the HTML element.

This example shows the color as border, it can be applied via the CSS property "border" or "border-color".

```
.border, #border, table{ border:4px solid rgb(192, 149, 115) }
```


If only the border color should be changed use the property `border-color`.

```
.border{ border-color:rgb(192, 149, 115) }
```

If you want to add a box shadow in that color use:

Here you see how a box with a 4 pixel `rgb(192, 149, 115)` colored shadow looks like.

```
.boxshadow{ -moz-box-shadow:4px 4px 4px  
4px rgb(192, 149, 115); -webkit-box-  
shadow:4px 4px 4px 4px rgb(192, 149, 115);  
box-shadow:4px 4px 4px 4px rgb(192, 149,  
115) }
```

Background

The CSS property to change the background color of an element to HunterLab 58.2573, 7.0671, 19.5144 is called "background". The background property can be set on classes, ids or directly on the HTML element.

```
.background, #background, body{  
background: rgb(192, 149, 115) }
```

If only the background color should be changed can be used:

```
.background{ background-color: rgb(192,  
149, 115) }
```

This example shows the color as background, it is applied via the CSS property "background".

To optimize and compress your CSS code, you can use our [online CSS compressor and optimizer](#) based on csstidy. If you want to create a linear or radial gradient as background or border, check our [CSS Gradient Generator](#).

Hey! You found this booklet interesting? Support Converting Colors with the new Membership Option!

The pro membership hides all ads, plus gives you double the colors in the color bucket, and more awesome pro features!

[Learn more, Memberships starting at \\$2.50/m!](#)

**Follow me
on Twitter!**

@ConvertingColor