

Converting Colors

HunterLab(58.3979, 14.0273,
18.5845)

Have a look what the booklet for
HunterLab(58.3979, 14.0273,
18.5845) contains.

HunterLab(58.2880, 14.1570, 18.4119)	3
<i>Conversions</i>	4
<i>Details</i>	6
<i>Harmonies</i>	12
<i>Previews</i>	24
<i>Color Blindness Simulation</i>	28
<i>CSS Examples</i>	31

Color

**HunterLab(58.2880, 14.1570,
18.4119)**

Conversions

Conversions Part 1

Format	Color
Hex	CB9077
RGB	203, 144, 119
RGB Percent	80%, 56%, 47%
CMY	0.2039, 0.4353, 0.5333
CMYK	0.00, 0.29, 0.41, 0.20
HSL	18°, 45%, 63%
HSV	18°, 41%, 80%
XYZ	37.9316, 33.9749, 22.0113
YIQ	158.7910, 43.1890, 4.7330

Conversions

Conversions Part 2

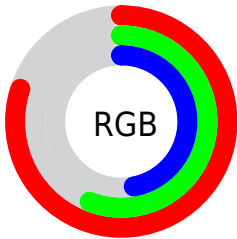
Format	Color
R_{YB}	203, 155, 119
Decimal	13340791
CIE _{Lab}	64.94, 19.23, 22.18
CIE _{LCh}	65, 29.352, 49.075
Yxy	33.9766, 0.4039, 0.3618
Android (android.graphics.Color)	4291530871 (0xFFFCB9077)
YUV	158.7910, -19.6170, 38.7713
Hunter-Lab	58.2880, 14.1570, 18.4119

Details

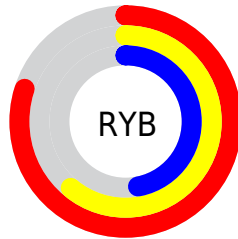
The HunterLab color **58.2880, 14.1570, 18.4119** is a light color, and the websafe version is hex **CC9966**. A complement of this color would be **63.3031, -14.0431, -14.1567**, and the grayscale version is **58.8625, -3.1408, 3.1981**.

A 20% lighter version of the original color is **80.3669, 12.1332, 21.3104**, and **38.0446, 13.4296, 14.6479** is the 20% darker color. If you saturate the color by 10%, you get **54.3047, 19.4061, 20.9956**, and if you desaturate by 10%, it is **62.5402, 9.2379, 15.4325**.

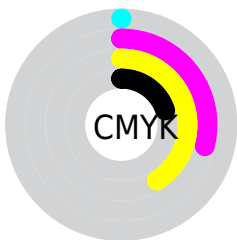
Distribution



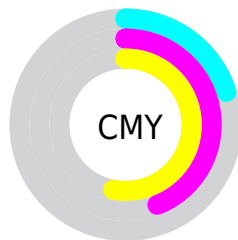
- Red (80%)
- Green (56%)
- Blue (47%)



- Red (80%)
- Yellow (61%)
- Blue (47%)



- Cyan (0%)
- Magenta (29%)
- Yellow (41%)
- Black (20%)



- Cyan (20%)
- Magenta (44%)
- Yellow (53%)

Brightness & Saturation Gradients

These gradients show how the HunterLab color 58.2880, 14.1570, 18.4119 changes by changing the brightness by 10 percent. The first figure shows a shift by +10% for each color and the second figure -10%.

Similar to the brightness gradients but the following saturation gradients show a change of the HunterLab color 58.2880, 14.1570, 18.4119 by changing the saturation by 10% instead.

■ 58.2880, 14.1570,
18.4119

■ 58.2880, 14.1570,
18.4119

178.8931, 14.8310,
33.8957

■ 47.8284, 13.7349,
16.5374

■ 81.1771, 14.7416,
22.0081

■ 38.0811, 13.2169,
14.5849

■ 93.5338, 14.9259,
23.7531

■ 29.1040, 12.5855,
12.5253

■ 106.4607, 15.0457,
25.4742

■ 20.9700, 11.8214,
10.3118

119.9337, 15.1062,
27.1777

■ 13.7777, 10.9006,
8.5651

133.9315, 15.1116,
28.8682

■ 7.3982, 11.1427,
5.1787

148.4351, 15.0655,

0.0000, NaN, NaN

30.5495

0.0000, NaN, NaN

163.4275, 14.9710,
32.2245

0.0000, NaN, NaN

■ 58.2880, 14.1570,
18.4119

■ 58.2880, 14.1570,
18.4119

■ 54.3047, 19.4061,
20.9956

■ 62.5402, 9.2379,
15.4325

■ 50.6222, 24.9700,
23.0998

■ 67.0253, 4.6539,
12.1243

■ 47.2819, 30.7825,
24.6373

■ 71.7174, 0.3844,
8.5447

■ 44.3257, 36.7224,
25.5259

■ 76.5933, -3.5958,
4.7390

■ 41.7933, 42.5971,
25.7168

■ 81.6332, -7.3145,
0.7432

■ 39.9665, 47.3731,
25.4565

■ 86.8206, -10.7996,
-3.4148

■ 91.9245, -15.2885,
-4.6449

■ 95.6224, -20.9167,
-0.1049

Harmonies

Analogous

The Analogous color harmony consists of three colors that are next to each other on the color wheel.



58.2894, 22.4009, 10.4113



58.2880, 14.1570, 18.4119



58.2894, 1.6927, 22.0028

Triad

The Triadic color harmony groups three colors that are evenly spaced from another and form a triangle on the color wheel.



58.2894, 14.1544, 18.4127



58.2894, -25.6518, 7.4956



58.2894, 5.2701, -24.0226

Complementary

The Complementary color scheme is a pair of colors which are on the opposite of each other on the color wheel.



58.2880, 14.1570, 18.4119



63.3031, -14.0431, -14.1567

Split Complementary

Split-complementary colors differ from the complementary color scheme. The scheme consists of three colors, the original color and two neighbors of the complement color.



58.2894, -7.7685, -25.2860



58.2880, 14.1570, 18.4119



58.2894, -24.8764, -5.1324

Square

The Square scheme is like the rectangle color scheme, but the four colors are evenly spaced on the color wheel.



58.2894, 14.1544, 18.4127



58.2894, -20.7986, 16.6818



58.2894, -18.5789, -17.7688



58.2894, 16.9696, -14.6218

Rectangle

The Rectangle color scheme consists of four colors that form a rectangle on the color wheel.



58.2880, 14.1570, 18.4119



58.2894, -6.9983, 22.0865



58.2894, -18.5789, -17.7688



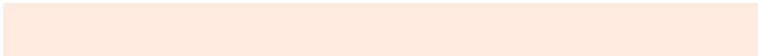
58.2894, 0.8762, -25.4798

Sweetspot

The Sweet Spot groups the original color and five complimentary colors.



58.2894, 14.1544, 18.4127



92.3200, 0.9152, 11.4301



53.9937, 35.7072, -13.0521



42.3342, 0.7533, 5.5787

0.0000, NaN, NaN



46.2646, -2.4686, 2.5136

Same Dimension

The Same Dimension uses a secret algorithm to generate beautiful new colors.



58.2894, 14.1544, 18.4127



70.6254, 24.6146, 26.9501



69.7444, -6.2024, 28.0306



34.2767, -0.2009, 3.6828



32.1016, 37.1608, 20.4314



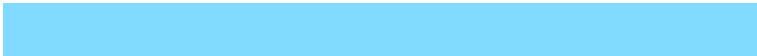
8.1556, 6.1422, 5.1330

Inverse Universe

The Inverse Universe completely reimagines the original color for something new.



63.3031, -14.0431, -14.1567



78.3711, -19.3918, -23.6211



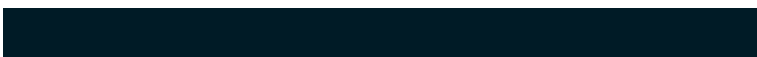
51.1686, 5.9050, -33.8341



34.8441, -3.3438, 0.0228



39.1531, -8.5538, -30.4727



9.5875, -2.9502, -5.6150

Previews

White Background



This preview shows how the HunterLab color 58.2880, 14.1570, 18.4119 looks on a white background.

Color Contrast Check

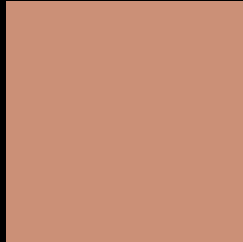
Large Text (above 18pt) WCAG AA × Fail

Any Text WCAG AA × Fail

Large Text (above 18pt) WCAG AAA × Fail

Any Text WCAG AAA × Fail

Black Background



This preview shows how the HunterLab color 58.2880, 14.1570, 18.4119 looks on a black background.

Color Contrast Check

Large Text (above 18pt) WCAG AA ✓ Pass

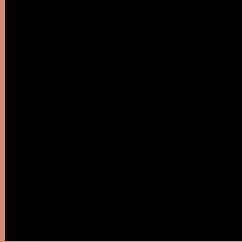
Any Text WCAG AA ✓ Pass

Large Text (above 18pt) WCAG AAA ✓ Pass

Any Text WCAG AAA ✓ Pass

If you want to check with other color combinations, try the [Color Contrast Checker](#).

HunterLab 58.2880, 14.1570, 18.4119 Background



This preview shows how black text looks on a background with the HunterLab color 58.2880, 14.1570, 18.4119.



This preview shows how white text looks on a background with the HunterLab color 58.2880, 14.1570,

Color Blindness Simulation

Color vision deficiency is a very complex topic, and I could not describe the different causes any better than Wikipedia does, so if you want to learn more, you should check out their [article about color blindness](#).

Dichromacy



Original Color

58.2880, 14.1570, 18.4119

Protanopia

58.5314, -4.6065, 16.3326

Deuteranopia

58.2068, 4.2023, 18.4818



Tritanopia

58.3781, 21.1741, 7.0381

Trichromacy



Original Color

58.2880, 14.1570, 18.4119

Protanomaly

58.3406, 1.9996, 16.9404

Deuteranomaly

58.0468, 7.8862, 18.3996

Tritanomaly

58.2177, 18.8058, 11.3267

Monochromacy



Original Color

58.2880, 14.1570, 18.4119

Achromatopsia

58.8816, -3.1418, 3.1991

Achromatomaly

58.5139, 2.1397, 9.3579

CSS Examples

Text

The CSS property to change the color of the text to HunterLab 58.2880, 14.1570, 18.4119 is called "color". The color property can be set on classes, ids or directly on the HTML element.

This example shows how text in the color `rgb(203, 144, 119)` looks like.

```
.text, #text, p{  
    color:rgb(203, 144, 119)  
}
```

If you want to add a text shadow in that color use the text-shadow property, you can generate a text shadow directly with our [CSS Text Shadow Generator](#).

Here you see how black text with a 4 pixel rgb(203, 144, 119) colored shadow looks like.

```
.shadow{ text-shadow: 4px 4px 2px rgb(203, 144, 119) }
```

Border

The CSS property to change the border of an element to HunterLab 58.2880, 14.1570, 18.4119 is called "border". The border property can be set on classes, ids or directly on the HTML element.

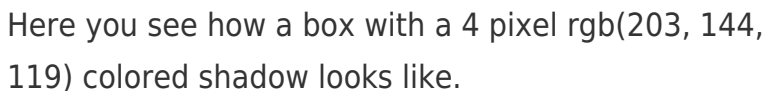
This example shows the color as border, it can be applied via the CSS property "border" or "border-color".

```
.border, #border, table{ border:4px solid rgb(203, 144, 119) }
```


If only the border color should be changed use the property `border-color`.

```
.border{ border-color:rgb(203, 144, 119) }
```

If you want to add a box shadow in that color use:



Here you see how a box with a 4 pixel `rgb(203, 144, 119)` colored shadow looks like.

```
.boxshadow{ -moz-box-shadow:4px 4px 4px 4px rgb(203, 144, 119); -webkit-box-shadow:4px 4px 4px 4px rgb(203, 144, 119); box-shadow:4px 4px 4px 4px rgb(203, 144, 119) }
```

Background

The CSS property to change the background color of an element to HunterLab 58.2880, 14.1570, 18.4119 is called "background". The background property can be set on classes, ids or directly on the HTML element.

```
.background, #background, body{  
background: rgb(203, 144, 119) }
```

If only the background color should be changed can be used:

```
.background{ background-color: rgb(203,  
144, 119) }
```

This example shows the color as background, it is applied via the CSS property "background".

To optimize and compress your CSS code, you can use our [online CSS compressor and optimizer](#) based on csstidy. If you want to create a linear or radial gradient as background or border, check our [CSS Gradient Generator](#).

Hey! You found this booklet interesting? Support Converting Colors with the new Membership Option!

The pro membership hides all ads, plus gives you double the colors in the color bucket, and more awesome pro features!

[Learn more, Memberships starting at \\$2.50/m!](#)

**Follow me
on Twitter!**

@ConvertingColor