

Converting Colors

HunterLab(58.4283, 14.9784,
9.2644)

Have a look what the booklet for
HunterLab(58.4283, 14.9784,
9.2644) contains.

HunterLab(58.5670, 14.9238, 9.2312)	3
<i>Conversions</i>	4
<i>Details</i>	6
<i>Harmonies</i>	12
<i>Previews</i>	24
<i>Color Blindness Simulation</i>	28
<i>CSS Examples</i>	31

Color

**HunterLab(58.5670, 14.9238,
9.2312)**

Conversions

Conversions Part 1

Format	Color
Hex	C69191
RGB	198, 145, 145
RGB Percent	78%, 57%, 57%
CMY	0.2235, 0.4314, 0.4314
CMYK	0.00, 0.27, 0.27, 0.22
HSL	0°, 32%, 67%
HSV	0°, 27%, 78%
XYZ	38.5250, 34.3009, 31.3783
YIQ	160.8470, 31.5880, 11.2360

Conversions

Conversions Part 2

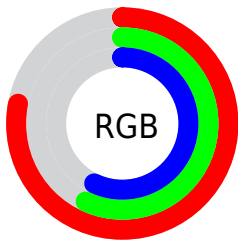
Format	Color
RYB	198, 145, 145
Decimal	13013393
CIELab	65.20, 20.03, 7.90
CIElCh	65, 21.526, 21.523
Yxy	34.3025, 0.3697, 0.3292
Android (android.graphics.Color)	4291203473 (0xFFC69191)
YUV	160.8470, -7.8126, 32.5832
Hunter-Lab	58.5670, 14.9238, 9.2312

Details

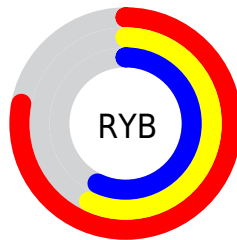
The HunterLab color **58.5670, 14.9238, 9.2312** is a light color, and the websafe version is hex **CC9999**. A complement of this color would be **71.0518, -18.6663, -1.1272**, and the grayscale version is **59.6597, -3.1833, 3.2414**.

A 20% lighter version of the original color is **81.3820, 15.4423, 11.0525**, and **38.3031, 14.0382, 7.0895** is the 20% darker color. If you saturate the color by 10%, you get **53.1142, 22.5336, 11.3900**, and if you desaturate by 10%, it is **64.4629, 7.5930, 7.2011**.

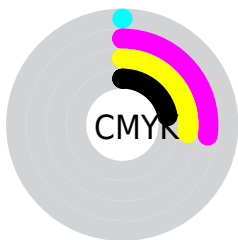
Distribution



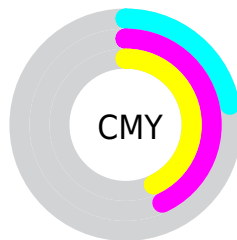
- Red (78%)
- Green (57%)
- Blue (57%)



- Red (78%)
- Yellow (57%)
- Blue (57%)



- Cyan (0%)
- Magenta (27%)
- Yellow (27%)
- Black (22%)



- Cyan (22%)
- Magenta (43%)
- Yellow (43%)

Brightness & Saturation Gradients

These gradients show how the HunterLab color 58.5670, 14.9238, 9.2312 changes by changing the brightness by 10 percent. The first figure shows a shift by +10% for each color and the second figure -10%.

Similar to the brightness gradients but the following saturation gradients show a change of the HunterLab color 58.5670, 14.9238, 9.2312 by changing the saturation by 10% instead.

■ 58.5670, 14.9238,
9.2312

■ 58.5670, 14.9238,
9.2312

179.2983, 15.8661,
18.8038

■ 48.0896, 14.4668,
8.2319

■ 81.4886, 15.5752,
11.2601

■ 38.3232, 13.9122,
7.2354

■ 93.8603, 15.7910,
12.2924

■ 29.3254, 13.2428,
6.2360

106.8016, 15.9413,
13.3387

■ 21.1685, 12.4396,
5.2220

120.2884, 16.0313,
14.4000

■ 13.9504, 11.4794,
4.1718

134.2995, 16.0654,
15.4768

■ 7.5888, 11.4542,
4.7267

148.8159, 16.0471,

0.0000, NaN, NaN

16.5695

0.0000, NaN, NaN

163.8207, 15.9798,
17.6785

0.0000, NaN, NaN

■ 58.5670, 14.9238,
9.2312

■ 58.5670, 14.9238,
9.2312

■ 53.1142, 22.5336,
11.3900

■ 64.4629, 7.5930,
7.2011

■ 48.1876, 30.3281,
13.6468

■ 70.7273, 0.5727,
5.3000

■ 43.8915, 38.0747,
15.9330

■ 77.3054, -6.1538,
3.5199

■ 40.3376, 45.3638,
18.1192

■ 84.1529, -12.6178,
1.8472

■ 37.6272, 51.6090,
20.0161

■ 91.2346, -18.8554,
0.2672

■ 35.8184, 56.1817,
21.4175

■ 95.2606, -22.2378,
-0.5738

■ 34.8699, 58.7296,
22.2023

■ 34.6499, 59.3366,
22.3899

Harmonies

Analogous

The Analogous color harmony consists of three colors that are next to each other on the color wheel.



58.5684, 16.1305, 0.5583



58.5670, 14.9238, 9.2312



58.5684, 8.7212, 15.2638

Triad

The Triadic color harmony groups three colors that are evenly spaced from another and form a triangle on the color wheel.



58.5684, 14.9215, 9.2322



58.5684, -16.8008, 13.0345



58.5684, -5.8065, -16.8179

Complementary

The Complementary color scheme is a pair of colors which are on the opposite of each other on the color wheel.



58.5670, 14.9238, 9.2312



71.0518, -18.6663, -1.1272

Split Complementary

Split-complementary colors differ from the complementary color scheme. The scheme consists of three colors, the original color and two neighbors of the complement color.



58.5684, -14.1045, -12.1745



58.5670, 14.9238, 9.2312



58.5684, -20.1808, 5.7012

Square

The Square scheme is like the rectangle color scheme, but the four colors are evenly spaced on the color wheel.



58.5684, 14.9215, 9.2322



58.5684, -9.7036, 17.2023



58.5684, -19.2263, -3.5780



58.5684, 3.7507, -15.4674

Rectangle

The Rectangle color scheme consists of four colors that form a rectangle on the color wheel.



58.5670, 14.9238, 9.2312



58.5684, 2.7963, 17.4343



58.5684, -19.2263, -3.5780



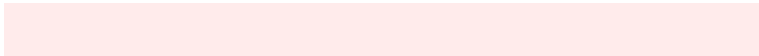
58.5684, -8.8262, -15.8826

Sweetspot

The Sweet Spot groups the original color and five complimentary colors.



58.5684, 14.9215, 9.2322



92.9644, 2.0023, 7.3853



60.2778, 23.6479, -14.9938



42.4115, 1.5781, 3.5921

0.0000, NaN, NaN



46.2646, -2.4686, 2.5136

Same Dimension

The Same Dimension uses a secret algorithm to generate beautiful new colors.



58.5684, 14.9215, 9.2322



73.7128, 25.6027, 13.9066



65.8525, 1.4696, 16.4848



32.6145, 1.1245, 2.7324



27.9427, 47.8502, 18.0558



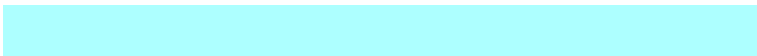
6.0807, 10.4109, 3.9292

Inverse Universe

The Inverse Universe completely reimagines the original color for something new.



71.0518, -18.6663, -1.1272



93.6301, -28.2474, -2.7091



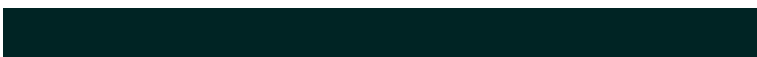
62.7793, -6.0040, -11.8776



34.7382, -4.5431, 0.9856



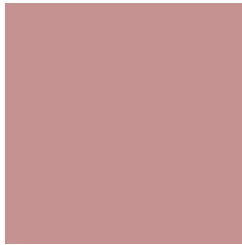
53.7705, -28.5038, -5.6768



11.7007, -6.2027, -1.2350

Previews

White Background



This preview shows how the HunterLab color 58.5670, 14.9238, 9.2312 looks on a white background.

Color Contrast Check

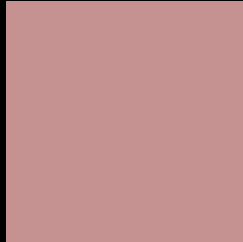
Large Text (above 18pt) WCAG AA × Fail

Any Text WCAG AA × Fail

Large Text (above 18pt) WCAG AAA × Fail

Any Text WCAG AAA × Fail

Black Background



This preview shows how the HunterLab color 58.5670, 14.9238, 9.2312 looks on a black background.

Color Contrast Check

Large Text (above 18pt) WCAG AA ✓ Pass

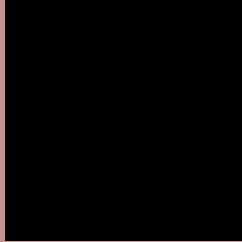
Any Text WCAG AA ✓ Pass

Large Text (above 18pt) WCAG AAA ✓ Pass

Any Text WCAG AAA ✓ Pass

If you want to check with other color combinations, try the [Color Contrast Checker](#).

HunterLab 58.5670, 14.9238, 9.2312 Background



This preview shows how black text looks on a background with the HunterLab color 58.5670, 14.9238, 9.2312.



This preview shows how white text looks on a background with the HunterLab color 58.5670, 14.9238, 9.2312.

Color Blindness Simulation

Color vision deficiency is a very complex topic, and I could not describe the different causes any better than Wikipedia does, so if you want to learn more, you should check out their [article about color blindness](#).

Dichromacy



Original Color

58.5670, 14.9238, 9.2312

Protanopia

58.7429, -2.5282, 6.1704

Deuteranopia

58.6343, 3.9880, 9.5194



Tritanopia

58.6985, 17.2217, 5.1485

Trichromacy



Original Color

58.5670, 14.9238, 9.2312

Protanomaly

58.4658, 3.6890, 7.2563

Deuteranomaly

58.5367, 7.9178, 9.4835

Tritanomaly

58.5858, 16.6428, 6.7616

Monochromacy



Original Color

58.5670, 14.9238, 9.2312

Achromatopsia

59.6993, -3.1854, 3.2436

Achromatomaly

58.9982, 2.9284, 5.2420

CSS Examples

Text

The CSS property to change the color of the text to HunterLab 58.5670, 14.9238, 9.2312 is called "color". The color property can be set on classes, ids or directly on the HTML element.

This example shows how text in the color `rgb(198, 145, 145)` looks like.

```
.text, #text, p{  
    color:rgb(198, 145, 145)  
}
```

If you want to add a text shadow in that color use the text-shadow property, you can generate a text shadow directly with our [CSS Text Shadow Generator](#).

Here you see how black text with a 4 pixel rgb(198, 145, 145) colored shadow looks like.

```
.shadow{ text-shadow: 4px 4px 2px rgb(198, 145, 145) }
```

Border

The CSS property to change the border of an element to HunterLab 58.5670, 14.9238, 9.2312 is called "border". The border property can be set on classes, ids or directly on the HTML element.

This example shows the color as border, it can be applied via the CSS property "border" or "border-color".

```
.border, #border, table{ border:4px solid rgb(198, 145, 145) }
```


If only the border color should be changed use the property `border-color`.

```
.border{ border-color:rgb(198, 145, 145) }
```

If you want to add a box shadow in that color use:

Here you see how a box with a 4 pixel `rgb(198, 145, 145)` colored shadow looks like.

```
.boxshadow{ -moz-box-shadow:4px 4px 4px  
4px rgb(198, 145, 145); -webkit-box-  
shadow:4px 4px 4px 4px rgb(198, 145, 145);  
box-shadow:4px 4px 4px 4px rgb(198, 145,  
145) }
```

Background

The CSS property to change the background color of an element to HunterLab 58.5670, 14.9238, 9.2312 is called "background". The background property can be set on classes, ids or directly on the HTML element.

```
.background, #background, body{  
background: rgb(198, 145, 145) }
```

If only the background color should be changed can be used:

```
.background{ background-color: rgb(198,  
145, 145) }
```

This example shows the color as background, it is applied via the CSS property "background".

To optimize and compress your CSS code, you can use our [online CSS compressor and optimizer](#) based on csstidy. If you want to create a linear or radial gradient as background or border, check our [CSS Gradient Generator](#).

Hey! You found this booklet interesting? Support Converting Colors with the new Membership Option!

The pro membership hides all ads, plus gives you double the colors in the color bucket, and more awesome pro features!

[Learn more, Memberships starting at \\$2.50/m!](#)

**Follow me
on Twitter!**

@ConvertingColor