

Converting Colors

HunterLab(58.5157, 40.6807,
4.0020)

Have a look what the booklet for
HunterLab(58.5157, 40.6807,
4.0020) contains.

HunterLab(58.4872, 41.0385, 3.9663)	3
<i>Conversions</i>	4
<i>Details</i>	6
<i>Harmonies</i>	12
<i>Previews</i>	24
<i>Color Blindness Simulation</i>	28
<i>CSS Examples</i>	31

Color

**HunterLab(58.4872, 41.0385,
3.9663)**

Conversions

Conversions Part 1

Format	Color
Hex	E97C9E
RGB	233, 124, 158
RGB Percent	91%, 49%, 62%
CMY	0.0863, 0.5137, 0.3804
CMYK	0.00, 0.47, 0.32, 0.09
HSL	341°, 71%, 70%
HSV	341°, 47%, 91%
XYZ	46.9834, 34.2075, 36.4741
YIQ	160.4670, 54.0500, 33.6820

Conversions

Conversions Part 2

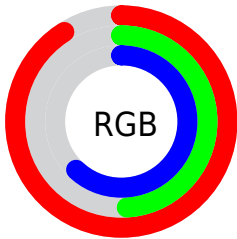
Format	Color
R _Y B	233, 124, 158
Decimal	15301790
CIE Lab	65.13, 45.65, 0.97
CIE LCh	65, 45.663, 1.223
Yxy	34.2092, 0.3993, 0.2907
Android (android.graphics.Color)	4293491870 (0xFFE97C9E)
YUV	160.4670, -1.2162, 63.6114
Hunter-Lab	58.4872, 41.0385, 3.9663

Details

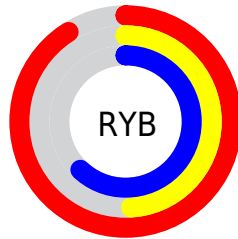
The HunterLab color **58.4872, 41.0385, 3.9663** is a light color, and the websafe version is hex **CC6699**. A complement of this color would be **81.6623, -38.5102, 10.4131**, and the grayscale version is **59.4717, -3.1733, 3.2312**.

A 20% lighter version of the original color is **76.3572, 28.5415, -1.3295**, and **38.1663, 37.7967, 2.5711** is the 20% darker color. If you saturate the color by 10%, you get **53.4099, 50.6084, 5.4024**, and if you desaturate by 10%, it is **64.2992, 31.0806, 3.2244**.

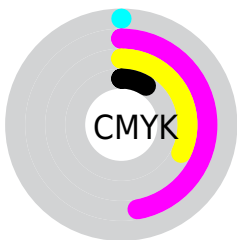
Distribution



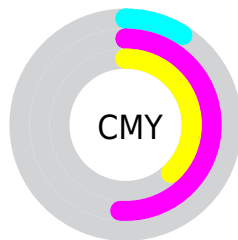
- Red (91%)
- Green (49%)
- Blue (62%)



- Red (91%)
- Yellow (49%)
- Blue (62%)



- Cyan (0%)
- Magenta (47%)
- Yellow (32%)
- Black (9%)



- Cyan (9%)
- Magenta (51%)
- Yellow (38%)

Brightness & Saturation Gradients

These gradients show how the HunterLab color 58.4872, 41.0385, 3.9663 changes by changing the brightness by 10 percent. The first figure shows a shift by +10% for each color and the second figure -10%.

Similar to the brightness gradients but the following saturation gradients show a change of the HunterLab color 58.4872, 41.0385, 3.9663 by changing the saturation by 10% instead.

■ 58.4872, 41.0385,
3.9663

■ 58.4872, 41.0385,
3.9663

179.1826, 50.4406,
10.8961

■ 48.0150, 39.5138,
3.3468

■ 81.3996, 43.7469,
5.3072

■ 38.2540, 37.8753,
2.7611

■ 93.7670, 44.9510,
6.0232

■ 29.2621, 36.1228,
2.2126

■ 106.7042, 46.0630,
6.7682

■ 21.1118, 34.2821,
1.7035

120.1871, 47.0892,
7.5413

■ 13.9010, 32.4516,
1.2368

134.1943, 48.0352,
8.3415

■ 7.5348, 32.8525,
0.9464

148.7071, 48.9062,

0.0000, INF, NaN

9.1679

0.0000, NaN, NaN

163.7083, 49.7067,
10.0196

0.0000, NaN, NaN

■ 58.4872, 41.0385,
3.9663

■ 58.4872, 41.0385,
3.9663

■ 53.4099, 50.6084,
5.4024

■ 64.2992, 31.0806,
3.2244

■ 49.1865, 59.2609,
7.5793

■ 70.7260, 21.0833,
3.0799

■ 45.9299, 66.2843,
10.4555

■ 77.6703, 11.2246,
3.4339

■ 43.7028, 70.9825,
13.8473

■ 85.0511, 1.5834,
4.1956

■ 42.4668, 73.0293,
17.4263

■ 92.8037, -7.8204,
5.2889

■ 42.1904, 73.3822,
18.5044

■ 97.9858, -12.4678,
3.3227

■ 98.0121, -12.3218,
2.9482

Harmonies

Analogous

The Analogous color harmony consists of three colors that are next to each other on the color wheel.



58.4887, 34.9972, -17.5623



58.4872, 41.0385, 3.9663



58.4887, 33.9692, 19.2918

Triad

The Triadic color harmony groups three colors that are evenly spaced from another and form a triangle on the color wheel.



58.4887, 41.0353, 3.9676



58.4887, -21.9416, 26.8000



58.4887, -20.6859, -39.3876

Complementary

The Complementary color scheme is a pair of colors which are on the opposite of each other on the color wheel.



58.4872, 41.0385, 3.9663



81.6623, -38.5102, 10.4131

Split Complementary

Split-complementary colors differ from the complementary color scheme. The scheme consists of three colors, the original color and two neighbors of the complement color.



58.4887, -32.7928, -19.4122



58.4872, 41.0385, 3.9663



58.4887, -33.4455, 18.3344

Square

The Square scheme is like the rectangle color scheme, but the four colors are evenly spaced on the color wheel.



58.4887, 41.0353, 3.9676



58.4887, -3.9514, 29.4007



58.4887, -37.1354, 2.3888



58.4887, -2.2918, -47.1664

Rectangle

The Rectangle color scheme consists of four colors that form a rectangle on the color wheel.



58.4872, 41.0385, 3.9663



58.4887, 23.2674, 25.2978



58.4887, -37.1354, 2.3888



58.4887, -25.5331, -33.6043

Sweetspot

The Sweet Spot groups the original color and five complimentary colors.



58.4887, 41.0353, 3.9676



88.2141, 9.5152, 3.9920



56.8964, 42.6549, -44.5281



40.0069, 5.4824, 1.7761

0.0000, NaN, NaN



46.2646, -2.4686, 2.5136

Same Dimension

The Same Dimension uses a secret algorithm to generate beautiful new colors.



58.4887, 41.0353, 3.9676



59.4289, 55.5494, 5.8854



62.2271, 26.5381, 20.6379



38.8991, 1.9467, 1.8530



31.8118, 55.3907, 13.4866



9.0079, 15.8652, 2.4178

Inverse Universe

The Inverse Universe completely reimagines the original color for something new.



58.4887, 41.0353, 3.9676



59.4289, 55.5494, 5.8854



76.0041, -23.0481, -13.7079



38.8991, 1.9467, 1.8530



31.8118, 55.3907, 13.4866



9.0079, 15.8652, 2.4178

Previews

White Background



This preview shows how the HunterLab color 58.4872, 41.0385, 3.9663 looks on a white background.

Color Contrast Check

Large Text (above 18pt) WCAG AA × Fail

Any Text WCAG AA × Fail

Large Text (above 18pt) WCAG AAA × Fail

Any Text WCAG AAA × Fail

Black Background



This preview shows how the HunterLab color 58.4872, 41.0385, 3.9663 looks on a black background.

Color Contrast Check

Large Text (above 18pt) WCAG AA ✓ Pass

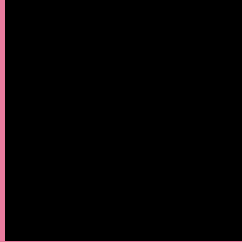
Any Text WCAG AA ✓ Pass

Large Text (above 18pt) WCAG AAA ✓ Pass

Any Text WCAG AAA ✓ Pass

If you want to check with other color combinations, try the [Color Contrast Checker](#).

HunterLab 58.4872, 41.0385, 3.9663 Background



This preview shows how black text looks on a background with the HunterLab color 58.4872, 41.0385, 3.9663.



This preview shows how white text looks on a background with the HunterLab color 58.4872, 41.0385,

3.9663.

Color Blindness Simulation

Color vision deficiency is a very complex topic, and I could not describe the different causes any better than Wikipedia does, so if you want to learn more, you should check out their [article about color blindness](#).

Dichromacy



Original Color

58.4872, 41.0385, 3.9663

Protanopia

58.6483, 0.2477, -6.4372

Deuteranopia

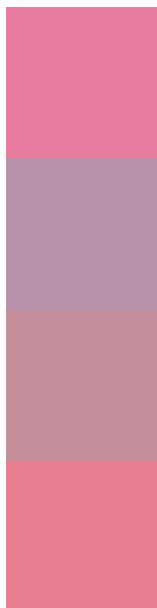
58.5769, 4.2839, 5.6659



Tritanopia

58.5093, 35.4727, 12.6915

Trichromacy



Original Color

58.4872, 41.0385, 3.9663

Protanomaly

57.7767, 13.9532, -3.6913

Deuteranomaly

57.9507, 17.5293, 4.2888

Tritanomaly

58.6335, 37.3666, 9.6959

Monochromacy



Original Color

58.4872, 41.0385, 3.9663

Achromatopsia

59.2902, -3.1636, 3.2213

Achromatomaly

58.2541, 11.9968, 2.7218

CSS Examples

Text

The CSS property to change the color of the text to HunterLab 58.4872, 41.0385, 3.9663 is called "color". The color property can be set on classes, ids or directly on the HTML element.

This example shows how text in the color `rgb(233, 124, 158)` looks like.

```
.text, #text, p{  
    color:rgb(233, 124, 158)  
}
```

If you want to add a text shadow in that color use the text-shadow property, you can generate a text shadow directly with our [CSS Text Shadow Generator](#).

Here you see how black text with a 4 pixel rgb(233, 124, 158) colored shadow looks like.

```
.shadow{ text-shadow: 4px 4px 2px rgb(233, 124, 158) }
```

Border

The CSS property to change the border of an element to HunterLab 58.4872, 41.0385, 3.9663 is called "border". The border property can be set on classes, ids or directly on the HTML element.

This example shows the color as border, it can be applied via the CSS property "border" or "border-color".

```
.border, #border, table{ border:4px solid rgb(233, 124, 158) }
```


If only the border color should be changed use the property `border-color`.

```
.border{ border-color:rgb(233, 124, 158) }
```

If you want to add a box shadow in that color use:

Here you see how a box with a 4 pixel `rgb(233, 124, 158)` colored shadow looks like.

```
.boxshadow{ -moz-box-shadow:4px 4px 4px  
4px rgb(233, 124, 158); -webkit-box-  
shadow:4px 4px 4px 4px rgb(233, 124, 158);  
box-shadow:4px 4px 4px 4px rgb(233, 124,  
158) }
```

Background

The CSS property to change the background color of an element to HunterLab 58.4872, 41.0385, 3.9663 is called "background". The background property can be set on classes, ids or directly on the HTML element.

```
.background, #background, body{  
background: rgb(233, 124, 158) }
```

If only the background color should be changed can be used:

```
.background{ background-color: rgb(233,  
124, 158) }
```

This example shows the color as background, it is applied via the CSS property "background".

To optimize and compress your CSS code, you can use our [online CSS compressor and optimizer](#) based on csstidy. If you want to create a linear or radial gradient as background or border, check our [CSS Gradient Generator](#).

Hey! You found this booklet interesting? Support Converting Colors with the new Membership Option!

The pro membership hides all ads, plus gives you double the colors in the color bucket, and more awesome pro features!

[Learn more, Memberships starting at \\$2.50/m!](#)

**Follow me
on Twitter!**

@ConvertingColor