

Converting Colors

HunterLab(58.5846, 6.2183,
13.0108)

Have a look what the booklet for
HunterLab(58.5846, 6.2183,
13.0108) contains.

HunterLab(58.5846, 6.2183, 13.0108)	3
<i>Conversions</i>	4
<i>Details</i>	6
<i>Harmonies</i>	12
<i>Previews</i>	24
<i>Color Blindness Simulation</i>	28
<i>CSS Examples</i>	31

Color

**HunterLab(58.5846, 6.2183,
13.0108)**

Conversions

Conversions Part 1

Format	Color
Hex	BA9787
RGB	186, 151, 135
RGB Percent	73%, 59%, 53%
CMY	0.2706, 0.4078, 0.4706
CMYK	0.00, 0.19, 0.27, 0.27
HSL	19°, 27%, 63%
HSV	19°, 27%, 73%
XYZ	35.6895, 34.3216, 27.6653
YIQ	159.6410, 25.9960, 2.4440

Conversions

Conversions Part 2

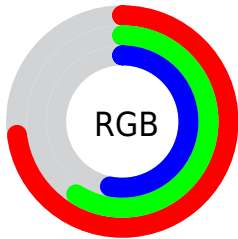
Format	Color
RYB	186, 158, 135
Decimal	12228487
CIELab	65.22, 10.64, 13.36
CIElCh	65, 17.079, 51.446
Yxy	34.3231, 0.3654, 0.3514
Android (android.graphics.Color)	4290418567 (0xFFBA9787)
YUV	159.6410, -12.1480, 23.1168
Hunter-Lab	58.5846, 6.2183, 13.0108

Details

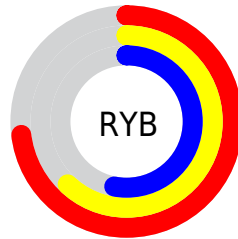
The HunterLab color **58.5846, 6.2183, 13.0108** is a light color, and the websafe version is hex **CC9999**. A complement of this color would be **61.1918, -10.1551, -7.4824**, and the grayscale version is **59.1851, -3.1580, 3.2156**.

A 20% lighter version of the original color is **81.4544, 6.1871, 15.6692**, and **38.3089, 6.1719, 10.4126** is the 20% darker color. If you saturate the color by 10%, you get **54.7318, 10.3722, 15.8752**, and if you desaturate by 10%, it is **62.6314, 2.3528, 9.8581**.

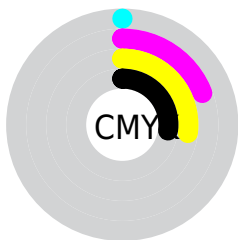
Distribution



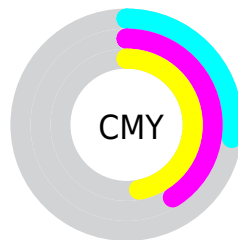
- Red (73%)
- Green (59%)
- Blue (53%)



- Red (73%)
- Yellow (62%)
- Blue (53%)



- Cyan (0%)
- Magenta (19%)
- Yellow (27%)
- Black (27%)



- Cyan (27%)
- Magenta (41%)
- Yellow (47%)

Brightness & Saturation Gradients

These gradients show how the HunterLab color 58.5846, 6.2183, 13.0108 changes by changing the brightness by 10 percent. The first figure shows a shift by +10% for each color and the second figure -10%.

Similar to the brightness gradients but the following saturation gradients show a change of the HunterLab color 58.5846, 6.2183, 13.0108 by changing the saturation by 10% instead.

■ 58.5846, 6.2183,
13.0108

■ 58.5846, 6.2183,
13.0108

179.3239, 3.7774,
24.7739

■ 48.1061, 6.2188,
11.6902

■ 81.5082, 6.0174,
15.6170

■ 38.3384, 6.1458,
10.3437

■ 93.8809, 5.8331,
16.9126

■ 29.3393, 5.9859,
8.9568

■ 106.8231, 5.5984,
18.2089

■ 21.1810, 5.7226,
7.5043

120.3107, 5.3170,
19.5084

■ 13.9613, 5.3320,
5.9481

134.3227, 4.9917,
20.8132

■ 7.6006, 5.6967,
5.3204

148.8399, 4.6252,

0.0000, NaN, NaN

22.1250

0.0000, NaN, NaN

163.8454, 4.2198,
23.4449

0.0000, NaN, NaN

■ 58.5846, 6.2183,
13.0108

■ 58.5846, 6.2183,
13.0108

■ 54.7318, 10.3722,
15.8752

■ 62.6314, 2.3528,
9.8581

■ 51.0938, 14.8315,
18.3916

■ 66.8467, -1.2376,
6.4615

■ 47.7004, 19.5885,
20.4935

■ 71.2138, -4.5789,
2.8597

■ 44.5834, 24.6103,
22.1064

■ 75.7171, -7.6956,
-0.9170

■ 41.7770, 29.8242,
23.1560

■ 80.3434, -10.6118,
-4.8444

■ 39.3155, 35.1035,
23.5861

■ 85.0814, -13.3496,
-8.9032

■ 37.2266, 40.2484,
23.4239

■ 89.5458, -18.0398,
-7.7798

■ 36.7456, 41.5033,
23.3690

■ 93.7977, -24.3488,
-2.4306

■ 94.4347, -25.2733,
-1.6509

Harmonies

Analogous

The Analogous color harmony consists of three colors that are next to each other on the color wheel.



58.5860, 11.0353, 8.0264



58.5846, 6.2183, 13.0108



58.5860, -0.9495, 15.2896

Triad

The Triadic color harmony groups three colors that are evenly spaced from another and form a triangle on the color wheel.



58.5860, 6.2162, 13.0117



58.5860, -16.8320, 5.2103



58.5860, 2.2851, -11.2091

Complementary

The Complementary color scheme is a pair of colors which are on the opposite of each other on the color wheel.



58.5846, 6.2183, 13.0108



61.1918, -10.1551, -7.4824

Split Complementary

Split-complementary colors differ from the complementary color scheme. The scheme consists of three colors, the original color and two neighbors of the complement color.



58.5860, -5.2774, -12.2126



58.5846, 6.2183, 13.0108



58.5860, -16.0639, -2.0997

Square

The Square scheme is like the rectangle color scheme, but the four colors are evenly spaced on the color wheel.



58.5860, 6.2162, 13.0117



58.5860, -14.0770, 11.1750



58.5860, -11.9231, -8.6981



58.5860, 8.6868, -6.1083

Rectangle

The Rectangle color scheme consists of four colors that form a rectangle on the color wheel.



58.5846, 6.2183, 13.0108



58.5860, -5.9881, 15.1957



58.5860, -11.9231, -8.6981



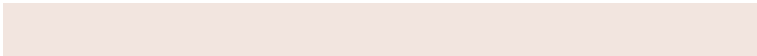
58.5860, -0.2143, -12.0605

Sweetspot

The Sweet Spot groups the original color and five complimentary colors.



58.5860, 6.2162, 13.0117



89.5846, -1.3328, 9.0352



55.4042, 19.7872, -6.5841



41.6305, -0.2903, 4.5727



97.7295, -5.2146, 5.3098



44.2712, -2.3622, 2.4053

Same Dimension

The Same Dimension uses a secret algorithm to generate beautiful new colors.



58.5860, 6.2162, 13.0117



75.6630, 11.7493, 19.9309



65.6970, -5.9920, 19.6906



30.7568, -0.2664, 3.3199



30.3381, 33.4799, 19.2803



6.6231, 3.9278, 4.1499

Inverse Universe

The Inverse Universe completely reimagines the original color for something new.



61.1918, -10.1551, -7.4824



79.9061, -15.0010, -13.5020



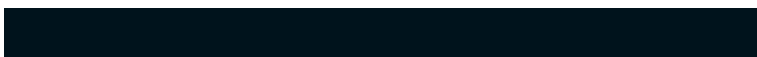
53.8595, 1.8934, -17.9173



31.1806, -2.9147, -0.0037



35.8414, -6.9772, -29.7368



7.4717, -2.3896, -4.1805

Previews

White Background



This preview shows how the HunterLab color 58.5846, 6.2183, 13.0108 looks on a white background.

Color Contrast Check

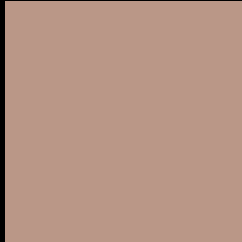
Large Text (above 18pt) WCAG AA × Fail

Any Text WCAG AA × Fail

Large Text (above 18pt) WCAG AAA × Fail

Any Text WCAG AAA × Fail

Black Background



This preview shows how the HunterLab color 58.5846, 6.2183, 13.0108 looks on a black background.

Color Contrast Check

Large Text (above 18pt) WCAG AA ✓ Pass

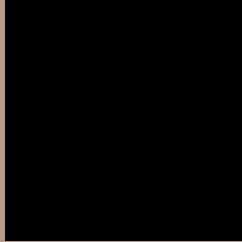
Any Text WCAG AA ✓ Pass

Large Text (above 18pt) WCAG AAA ✓ Pass

Any Text WCAG AAA ✓ Pass

If you want to check with other color combinations, try the [Color Contrast Checker](#).

HunterLab 58.5846, 6.2183, 13.0108 Background



This preview shows how black text looks on a background with the HunterLab color 58.5846, 6.2183, 13.0108.



This preview shows how white text looks on a background with the HunterLab color 58.5846, 6.2183,

Color Blindness Simulation

Color vision deficiency is a very complex topic, and I could not describe the different causes any better than Wikipedia does, so if you want to learn more, you should check out their [article about color blindness](#).

Dichromacy



Original Color

58.5846, 6.2183, 13.0108

Protanopia

58.6726, -3.4586, 11.4101

Deuteranopia

58.7170, 3.8152, 13.1025



Tritanopia

58.7383, 12.1825, 3.2985

Trichromacy



Original Color

58.5846, 6.2183, 13.0108

Protanomaly

58.4482, 0.1536, 11.6271

Deuteranomaly

58.5432, 4.6615, 12.9416

Tritanomaly

58.6415, 9.9765, 7.1360

Monochromacy



Original Color

58.5846, 6.2183, 13.0108

Achromatopsia

59.2902, -3.1636, 3.2213

Achromatomaly

58.9774, -0.2912, 6.9031

CSS Examples

Text

The CSS property to change the color of the text to HunterLab 58.5846, 6.2183, 13.0108 is called "color". The color property can be set on classes, ids or directly on the HTML element.

This example shows how text in the color `rgb(186, 151, 135)` looks like.

```
.text, #text, p{  
    color:rgb(186, 151, 135)  
}
```

If you want to add a text shadow in that color use the text-shadow property, you can generate a text shadow directly with our [CSS Text Shadow Generator](#).

Here you see how black text with a 4 pixel rgb(186, 151, 135) colored shadow looks like.

```
.shadow{ text-shadow: 4px 4px 2px rgb(186, 151, 135) }
```

Border

The CSS property to change the border of an element to HunterLab 58.5846, 6.2183, 13.0108 is called "border". The border property can be set on classes, ids or directly on the HTML element.

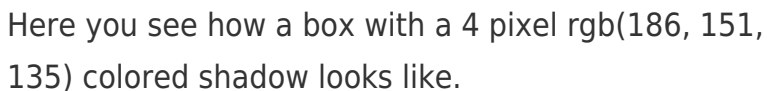
This example shows the color as border, it can be applied via the CSS property "border" or "border-color".

```
.border, #border, table{ border:4px solid rgb(186, 151, 135) }
```


If only the border color should be changed use the property `border-color`.

```
.border{ border-color:rgb(186, 151, 135) }
```

If you want to add a box shadow in that color use:



Here you see how a box with a 4 pixel `rgb(186, 151, 135)` colored shadow looks like.

```
.boxshadow{ -moz-box-shadow:4px 4px 4px 4px rgb(186, 151, 135); -webkit-box-shadow:4px 4px 4px 4px rgb(186, 151, 135); box-shadow:4px 4px 4px 4px rgb(186, 151, 135) }
```

Background

The CSS property to change the background color of an element to HunterLab 58.5846, 6.2183, 13.0108 is called "background". The background property can be set on classes, ids or directly on the HTML element.

```
.background, #background, body{  
background: rgb(186, 151, 135) }
```

If only the background color should be changed can be used:

```
.background{ background-color: rgb(186,  
151, 135) }
```

This example shows the color as background, it is applied via the CSS property "background".

To optimize and compress your CSS code, you can use our [online CSS compressor and optimizer](#) based on csstidy. If you want to create a linear or radial gradient as background or border, check our [CSS Gradient Generator](#).

Hey! You found this booklet interesting? Support Converting Colors with the new Membership Option!

The pro membership hides all ads, plus gives you double the colors in the color bucket, and more awesome pro features!

[Learn more, Memberships starting at \\$2.50/m!](#)

**Follow me
on Twitter!**

@ConvertingColor