

Converting Colors

HunterLab(58.5972, 14.6131,
12.4164)

Have a look what the booklet for
HunterLab(58.5972, 14.6131,
12.4164) contains.

HunterLab(58.5972, 14.6131, 12.4164)	3
<i>Conversions</i>	4
<i>Details</i>	6
<i>Harmonies</i>	12
<i>Previews</i>	24
<i>Color Blindness Simulation</i>	28
<i>CSS Examples</i>	31

Color

**HunterLab(58.5972, 14.6131,
12.4164)**

Conversions

Conversions Part 1

Format	Color
Hex	C89189
RGB	200, 145, 137
RGB Percent	78%, 57%, 54%
CMY	0.2157, 0.4314, 0.4627
CMYK	0.00, 0.27, 0.31, 0.22
HSL	8°, 36%, 66%
HSV	8°, 31%, 78%
XYZ	38.4602, 34.3363, 28.2674
YIQ	160.5330, 35.3480, 9.1720

Conversions

Conversions Part 2

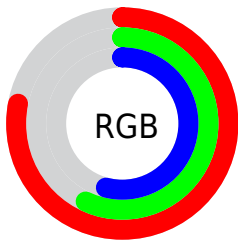
Format	Color
R _Y B	200, 146, 137
Decimal	13144457
CIE Lab	65.23, 19.70, 12.46
CIE LCh	65, 23.309, 32.324
Yxy	34.3379, 0.3805, 0.3398
Android (android.graphics.Color)	4291334537 (0xFFC89189)
YUV	160.5330, -11.6018, 34.6126
Hunter-Lab	58.5972, 14.6131, 12.4164

Details

The HunterLab color **58.5972, 14.6131, 12.4164** is a light color, and the websafe version is hex **CC9999**. A complement of this color would be **68.6922, -17.3326, -5.1400**, and the grayscale version is **59.5451, -3.1772, 3.2352**.

A 20% lighter version of the original color is **81.1323, 14.1331, 14.6406**, and **38.3579, 13.8456, 9.9410** is the 20% darker color. If you saturate the color by 10%, you get **53.7438, 21.1664, 14.9205**, and if you desaturate by 10%, it is **63.8109, 8.3577, 9.8274**.

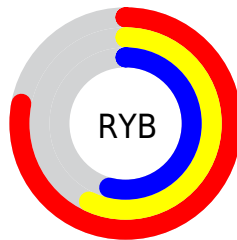
Distribution



Red (78%)

Green (57%)

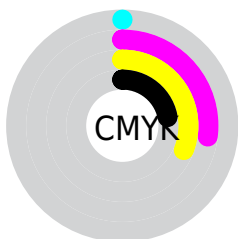
Blue (54%)



Red (78%)

Yellow (57%)

Blue (54%)

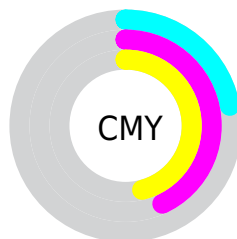


Cyan (0%)

Magenta (27%)

Yellow (31%)

Black (22%)



Cyan (22%)


Magenta (43%)


Yellow (46%)

Brightness & Saturation Gradients


These gradients show how the HunterLab color 58.5972, 14.6131, 12.4164 changes by changing the brightness by 10 percent. The first figure shows a shift by +10% for each color and the second figure -10%.


Similar to the brightness gradients but the following saturation gradients show a change of the HunterLab color 58.5972, 14.6131, 12.4164 by changing the saturation by 10% instead.


 58.5972, 14.6131,
12.4164


 58.5972, 14.6131,
12.4164


179.3422, 15.4380,
23.8155


 48.1179, 14.1717,
11.1496


 81.5223, 15.2350,
14.9263

 38.3494, 13.6335,
9.8617


 93.8957, 15.4369,
16.1782

 29.3494, 12.9813,
8.5398


 106.8385, 15.5739,
17.4328

 21.1900, 12.1960,
7.1611

120.3268, 15.6510,
18.6928

 13.9691, 11.2542,
5.6850

134.3393, 15.6726,
19.9598

 7.6091, 11.2149,
5.3264

148.8571, 15.6422,

0.0000, NaN, NaN

21.2353

0.0000, NaN, NaN

163.8632, 15.5631,
22.5202

0.0000, NaN, NaN

■ 58.5972, 14.6131,
12.4164

■ 58.5972, 14.6131,
12.4164

■ 53.7438, 21.1664,
14.9205

■ 63.8109, 8.3577,
9.8274

■ 49.3084, 27.9691,
17.2743

■ 69.3291, 2.4159,
7.1902

■ 45.3639, 34.8846,
19.3868

■ 75.1112, -3.2319,
4.5293

■ 41.9880, 41.6675,
21.1361

■ 81.1229, -8.6141,
1.8579

■ 39.2555, 47.9455,
22.3847

■ 87.3363, -13.7626,
-0.8170

■ 37.2215, 53.2560,
23.0233

■ 93.6595, -19.0979,
-2.5120

■ 36.0448, 56.6447,
23.2023

■ 95.4041, -21.7133,
-0.3877

Harmonies

Analogous

The Analogous color harmony consists of three colors that are next to each other on the color wheel.



58.5986, 18.0587, 3.9506



58.5972, 14.6131, 12.4164



58.5986, 6.3806, 17.5727

Triad

The Triadic color harmony groups three colors that are evenly spaced from another and form a triangle on the color wheel.



58.5986, 14.6107, 12.4173



58.5986, -19.6977, 11.3019



58.5986, -2.3223, -18.9956

Complementary

The Complementary color scheme is a pair of colors which are on the opposite of each other on the color wheel.



58.5972, 14.6131, 12.4164



68.6922, -17.3326, -5.1400

Split Complementary

Split-complementary colors differ from the complementary color scheme. The scheme consists of three colors, the original color and two neighbors of the complement color.



58.5986, -12.0699, -16.1243



58.5972, 14.6131, 12.4164



58.5986, -21.6789, 2.4184

Square

The Square scheme is like the rectangle color scheme, but the four colors are evenly spaced on the color wheel.



58.5986, 14.6107, 12.4173



58.5986, -13.3735, 17.0113



58.5986, -18.9824, -7.8357



58.5986, 7.8698, -15.1217

Rectangle

The Rectangle color scheme consists of four colors that form a rectangle on the color wheel.



58.5972, 14.6131, 12.4164



58.5986, -0.4542, 18.9909



58.5986, -18.9824, -7.8357



58.5986, -5.7583, -18.7868

Sweetspot

The Sweet Spot groups the original color and five complimentary colors.



58.5986, 14.6107, 12.4173



92.9979, 1.3835, 8.6330



58.3144, 27.5888, -14.6724



42.5131, 1.1560, 4.2326

0.0000, NaN, NaN



46.2646, -2.4686, 2.5136

Same Dimension

The Same Dimension uses a secret algorithm to generate beautiful new colors.



58.5986, 14.6107, 12.4173



72.5506, 25.2635, 18.6754



67.1399, -0.9646, 20.4542



32.9401, 0.5578, 3.0950



28.8692, 44.7511, 18.5725



6.8422, 8.0191, 4.3565

Inverse Universe

The Inverse Universe completely reimagines the original color for something new.



68.6922, -17.3326, -5.1400



88.5519, -25.6991, -9.2294



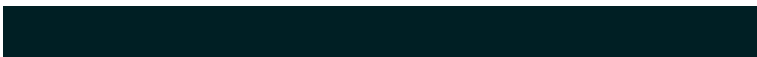
59.1871, -2.5058, -18.3118



34.3929, -3.9935, 0.5782



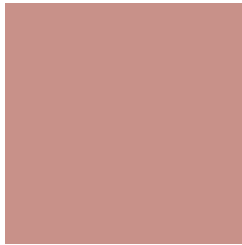
47.0493, -20.2256, -15.1463



10.5552, -4.8048, -2.8210

Previews

White Background



This preview shows how the HunterLab color 58.5972, 14.6131, 12.4164 looks on a white background.

Color Contrast Check

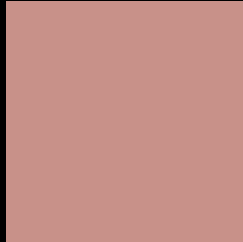
Large Text (above 18pt) WCAG AA × Fail

Any Text WCAG AA × Fail

Large Text (above 18pt) WCAG AAA × Fail

Any Text WCAG AAA × Fail

Black Background



This preview shows how the HunterLab color 58.5972, 14.6131, 12.4164 looks on a black background.

Color Contrast Check

Large Text (above 18pt) WCAG AA ✓ Pass

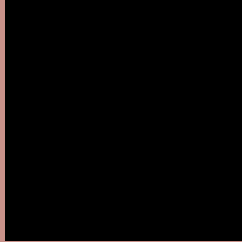
Any Text WCAG AA ✓ Pass

Large Text (above 18pt) WCAG AAA ✓ Pass

Any Text WCAG AAA ✓ Pass

If you want to check with other color combinations, try the [Color Contrast Checker](#).

HunterLab 58.5972, 14.6131, 12.4164 Background



This preview shows how black text looks on a background with the HunterLab color 58.5972, 14.6131, 12.4164.



This preview shows how white text looks on a background with the HunterLab color 58.5972, 14.6131,

Color Blindness Simulation

Color vision deficiency is a very complex topic, and I could not describe the different causes any better than Wikipedia does, so if you want to learn more, you should check out their [article about color blindness](#).

Dichromacy



Original Color

58.5972, 14.6131, 12.4164

Protanopia

58.7083, -3.0797, 9.4749

Deuteranopia

58.7411, 3.9444, 12.7548



Tritanopia

58.7379, 18.5510, 6.0985

Trichromacy



Original Color

58.5972, 14.6131, 12.4164

Protanomaly

58.4556, 3.2323, 10.5176

Deuteranomaly

58.6593, 7.9183, 12.7412

Tritanomaly

58.7117, 16.8200, 8.5967

Monochromacy



Original Color

58.5972, 14.6131, 12.4164

Achromatopsia

59.6993, -3.1854, 3.2436

Achromatomaly

59.0116, 2.8046, 6.5658

CSS Examples

Text

The CSS property to change the color of the text to HunterLab 58.5972, 14.6131, 12.4164 is called "color". The color property can be set on classes, ids or directly on the HTML element.

This example shows how text in the color `rgb(200, 145, 137)` looks like.

```
.text, #text, p{  
  color:rgb(200, 145, 137)  
}
```

If you want to add a text shadow in that color use the text-shadow property, you can generate a text shadow directly with our [CSS Text Shadow Generator](#).

Here you see how black text with a 4 pixel rgb(200, 145, 137) colored shadow looks like.

```
.shadow{ text-shadow: 4px 4px 2px rgb(200, 145, 137) }
```

Border

The CSS property to change the border of an element to HunterLab 58.5972, 14.6131, 12.4164 is called "border". The border property can be set on classes, ids or directly on the HTML element.

This example shows the color as border, it can be applied via the CSS property "border" or "border-color".

```
.border, #border, table{ border:4px solid rgb(200, 145, 137) }
```


If only the border color should be changed use the property `border-color`.

```
.border{ border-color:rgb(200, 145, 137) }
```

If you want to add a box shadow in that color use:

Here you see how a box with a 4 pixel `rgb(200, 145, 137)` colored shadow looks like.

```
.boxshadow{ -moz-box-shadow:4px 4px 4px  
4px rgb(200, 145, 137); -webkit-box-  
shadow:4px 4px 4px 4px rgb(200, 145, 137);  
box-shadow:4px 4px 4px 4px rgb(200, 145,  
137) }
```

Background

The CSS property to change the background color of an element to HunterLab 58.5972, 14.6131, 12.4164 is called "background". The background property can be set on classes, ids or directly on the HTML element.

```
.background, #background, body{  
background: rgb(200, 145, 137) }
```

If only the background color should be changed can be used:

```
.background{ background-color: rgb(200,  
145, 137) }
```

This example shows the color as background, it is applied via the CSS property "background".

To optimize and compress your CSS code, you can use our [online CSS compressor and optimizer](#) based on csstidy. If you want to create a linear or radial gradient as background or border, check our [CSS Gradient Generator](#).

Hey! You found this booklet interesting? Support Converting Colors with the new Membership Option!

The pro membership hides all ads, plus gives you double the colors in the color bucket, and more awesome pro features!

[Learn more, Memberships starting at \\$2.50/m!](#)

**Follow me
on Twitter!**

@ConvertingColor