

Converting Colors

HunterLab(58.6232, 5.6709,
19.9674)

Have a look what the booklet for
HunterLab(58.6232, 5.6709,
19.9674) contains.

HunterLab(58.6919, 5.7025, 19.8806)	3
<i>Conversions</i>	4
<i>Details</i>	6
<i>Harmonies</i>	12
<i>Previews</i>	24
<i>Color Blindness Simulation</i>	28
<i>CSS Examples</i>	31

Color

**HunterLab(58.6919, 5.7025,
19.8806)**

Conversions

Conversions Part 1

Format	Color
Hex	BF9773
RGB	191, 151, 115
RGB Percent	75%, 59%, 45%
CMY	0.2510, 0.4078, 0.5490
CMYK	0.00, 0.21, 0.40, 0.25
HSL	28°, 37%, 60%
HSV	28°, 40%, 75%
XYZ	35.6470, 34.4474, 20.9898
YIQ	158.8560, 35.3960, -2.7160

Conversions

Conversions Part 2

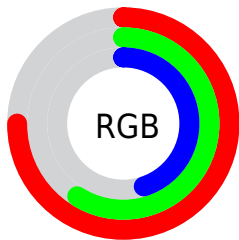
Format	Color
RYB	191, 183, 115
Decimal	12556147
CIELab	65.32, 10.07, 24.67
CIELCh	65, 26.644, 67.785
Yxy	34.4490, 0.3914, 0.3782
Android (android.graphics.Color)	4290746227 (0xFFBF9773)
YUV	158.8560, -21.6210, 28.1903
Hunter-Lab	58.6919, 5.7025, 19.8806

Details

The HunterLab color **58.6919, 5.7025, 19.8806** is a light color, and the websafe version is hex **CC9966**. A complement of this color would be **55.5409, -6.5820, -18.5085**, and the grayscale version is **58.8992, -3.1427, 3.2001**.

A 20% lighter version of the original color is **81.6042, 5.6580, 23.8208**, and **38.3952, 5.7695, 15.8007** is the 20% darker color. If you saturate the color by 10%, you get **55.6373, 8.8628, 22.6711**, and if you desaturate by 10%, it is **61.8950, 2.8608, 16.5490**.

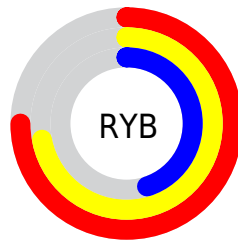
Distribution



Red (75%)

Green (59%)

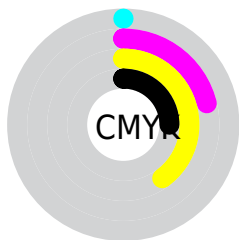
Blue (45%)



Red (75%)

Yellow (72%)

Blue (45%)

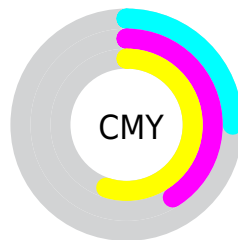


Cyan (0%)

Magenta (21%)

Yellow (40%)

Black (25%)



Cyan (25%)


Magenta (41%)

Yellow (55%)

Brightness & Saturation Gradients


These gradients show how the HunterLab color 58.6919, 5.7025, 19.8806 changes by changing the brightness by 10 percent. The first figure shows a shift by +10% for each color and the second figure -10%.

Similar to the brightness gradients but the following saturation gradients show a change of the HunterLab color 58.6919, 5.7025, 19.8806 by changing the saturation by 10% instead.


 58.6919, 5.7025,
19.8806


 58.6919, 5.7025,
19.8806

179.4797, 3.0468,
36.4405


 48.2066, 5.7323,
17.8469


 81.6280, 5.4467,
23.7624

 38.4316, 5.6908,
15.7213

 94.0065, 5.2370,
25.6373

 29.4246, 5.5644,
13.4712


 106.9542, 4.9779,
27.4815

 21.2575, 5.3375,
11.0461

 120.4472, 4.6729,
29.3019

 14.0279, 4.9866,
9.3045

134.4642, 4.3249,
31.1040

 7.6725, 5.3115,
5.3707

148.9863, 3.9365,

0.0000, NaN, NaN

32.8923

0.0000, NaN, NaN

163.9966, 3.5098,
34.6701

0.0000, NaN, NaN

■ 58.6919, 5.7025,
19.8806

■ 58.6919, 5.7025,
19.8806

■ 55.6373, 8.8628,
22.6711

■ 61.8950, 2.8608,
16.5490

■ 52.7405, 12.3577,
24.8630

■ 65.2300, 0.3292,
12.7283

■ 50.0172, 16.1826,
26.4057

■ 68.6871, -1.9141,
8.4700

■ 47.4818, 20.3185,
27.2600

■ 72.2561, -3.8903,
3.8202

■ 45.1481, 24.7226,
27.4140

■ 75.9278, -5.6206,
-1.1801

■ 43.0203, 29.2874,
27.0058

■ 79.6944, -7.1257,
-6.4948

■ 42.9776, 29.3826,
26.9970

■ 83.5485, -8.4253,
-12.0925

■ 86.9954, -12.2482,
-11.0863

■ 90.2690, -17.3163,
-6.8196

Harmonies

Analogous

The Analogous color harmony consists of three colors that are next to each other on the color wheel.



58.6933, 15.9121, 14.9491



58.6919, 5.7025, 19.8806



58.6933, -6.1792, 20.8209

Triad

The Triadic color harmony groups three colors that are evenly spaced from another and form a triangle on the color wheel.



58.6933, 5.7002, 19.8814



58.6933, -23.9823, 0.1928



58.6933, 11.4367, -16.5703

Complementary

The Complementary color scheme is a pair of colors which are on the opposite of each other on the color wheel.



58.6919, 5.7025, 19.8806



55.5409, -6.5820, -18.5085

Split Complementary

Split-complementary colors differ from the complementary color scheme. The scheme consists of three colors, the original color and two neighbors of the complement color.



58.6933, -0.0272, -22.4912



58.6919, 5.7025, 19.8806



58.6933, -20.0254, -11.6417

Square

The Square scheme is like the rectangle color scheme, but the four colors are evenly spaced on the color wheel.



58.6933, 5.7002, 19.8814



58.6933, -22.7131, 10.7896



58.6933, -11.4764, -20.5286



58.6933, 19.4023, -5.5736

Rectangle

The Rectangle color scheme consists of four colors that form a rectangle on the color wheel.



58.6919, 5.7025, 19.8806



58.6933, -13.3499, 19.2732



58.6933, -11.4764, -20.5286



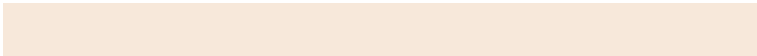
58.6933, 7.8303, -19.3100

Sweetspot

The Sweet Spot groups the original color and five complimentary colors.



58.6933, 5.7002, 19.8814



90.7984, -1.8748, 12.7531



50.7175, 29.4222, -4.7603



42.2602, -0.6971, 6.3358



98.8636, -5.2751, 5.3714



45.2661, -2.4153, 2.4594

Same Dimension

The Same Dimension uses a secret algorithm to generate beautiful new colors.



58.6933, 5.7002, 19.8814



74.8703, 11.4046, 29.9916



69.6278, -12.4752, 28.8741



32.0339, -0.9341, 3.8487



35.0680, 23.2766, 22.0162



7.8277, 2.6494, 4.8698

Inverse Universe

The Inverse Universe completely reimagines the original color for something new.



55.5409, -6.5820, -18.5085



69.7721, -8.2761, -32.1684



45.0045, 12.0624, -36.9934



31.6763, -2.3463, -0.4979



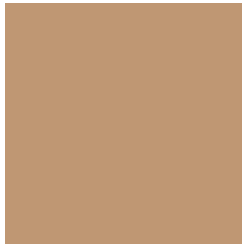
29.4779, 4.6614, -46.9074



6.8592, -0.8419, -6.7559

Previews

White Background



This preview shows how the HunterLab color 58.6919, 5.7025, 19.8806 looks on a white background.

Color Contrast Check

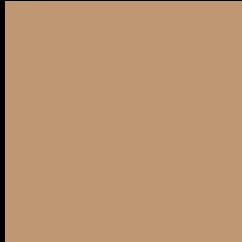
Large Text (above 18pt) WCAG AA × Fail

Any Text WCAG AA × Fail

Large Text (above 18pt) WCAG AAA × Fail

Any Text WCAG AAA × Fail

Black Background



This preview shows how the HunterLab color 58.6919, 5.7025, 19.8806 looks on a black background.

Color Contrast Check

Large Text (above 18pt) WCAG AA ✓ Pass

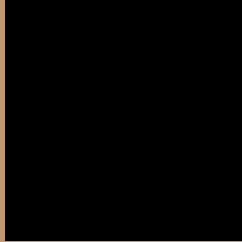
Any Text WCAG AA ✓ Pass

Large Text (above 18pt) WCAG AAA ✓ Pass

Any Text WCAG AAA ✓ Pass

If you want to check with other color combinations, try the [Color Contrast Checker](#).

HunterLab 58.6919, 5.7025, 19.8806 Background



This preview shows how black text looks on a background with the HunterLab color 58.6919, 5.7025, 19.8806.



This preview shows how white text looks on a background with the HunterLab color 58.6919, 5.7025,

Color Blindness Simulation

Color vision deficiency is a very complex topic, and I could not describe the different causes any better than Wikipedia does, so if you want to learn more, you should check out their [article about color blindness](#).

Dichromacy



Original Color

58.6919, 5.7025, 19.8806

Protanopia

58.8645, -5.2315, 18.9170

Deuteranopia

58.6393, 4.1106, 19.8056



Tritanopia

58.5553, 15.5528, 4.0552

Trichromacy



Original Color

58.6919, 5.7025, 19.8806

Protanomaly

58.7591, -1.1842, 19.2046

Deuteranomaly

58.7478, 4.4745, 19.9091

Tritanomaly

58.5575, 12.0314, 10.3821

Monochromacy



Original Color

58.6919, 5.7025, 19.8806

Achromatopsia

58.8816, -3.1418, 3.1991

Achromatomaly

58.6669, -0.3109, 9.8822

CSS Examples

Text

The CSS property to change the color of the text to HunterLab 58.6919, 5.7025, 19.8806 is called "color". The color property can be set on classes, ids or directly on the HTML element.

This example shows how text in the color `rgb(191, 151, 115)` looks like.

```
.text, #text, p{  
    color:rgb(191, 151, 115)  
}
```

If you want to add a text shadow in that color use the text-shadow property, you can generate a text shadow directly with our [CSS Text Shadow Generator](#).

Here you see how black text with a 4 pixel rgb(191, 151, 115) colored shadow looks like.

```
.shadow{ text-shadow: 4px 4px 2px rgb(191, 151, 115) }
```

Border

The CSS property to change the border of an element to HunterLab 58.6919, 5.7025, 19.8806 is called "border". The border property can be set on classes, ids or directly on the HTML element.

This example shows the color as border, it can be applied via the CSS property "border" or "border-color".

```
.border, #border, table{ border:4px solid rgb(191, 151, 115) }
```


If only the border color should be changed use the property `border-color`.

```
.border{ border-color:rgb(191, 151, 115) }
```

If you want to add a box shadow in that color use:

Here you see how a box with a 4 pixel `rgb(191, 151, 115)` colored shadow looks like.

```
.boxshadow{ -moz-box-shadow:4px 4px 4px  
4px rgb(191, 151, 115); -webkit-box-  
shadow:4px 4px 4px 4px rgb(191, 151, 115);  
box-shadow:4px 4px 4px 4px rgb(191, 151,  
115) }
```

Background

The CSS property to change the background color of an element to HunterLab 58.6919, 5.7025, 19.8806 is called "background". The background property can be set on classes, ids or directly on the HTML element.

```
.background, #background, body{  
background: rgb(191, 151, 115) }
```

If only the background color should be changed can be used:

```
.background{ background-color: rgb(191,  
151, 115) }
```

This example shows the color as background, it is applied via the CSS property "background".

To optimize and compress your CSS code, you can use our [online CSS compressor and optimizer](#) based on csstidy. If you want to create a linear or radial gradient as background or border, check our [CSS Gradient Generator](#).

Hey! You found this booklet interesting? Support Converting Colors with the new Membership Option!

The pro membership hides all ads, plus gives you double the colors in the color bucket, and more awesome pro features!

[Learn more, Memberships starting at \\$2.50/m!](#)

**Follow me
on Twitter!**

@ConvertingColor