

Converting Colors

HunterLab(58.6882, 11.1089,
0.4976)

Have a look what the booklet for
HunterLab(58.6882, 11.1089,
0.4976) contains.

HunterLab(58.7587, 11.2332, 0.4843)	3
<i>Conversions</i>	4
<i>Details</i>	6
<i>Harmonies</i>	12
<i>Previews</i>	24
<i>Color Blindness Simulation</i>	28
<i>CSS Examples</i>	31

Color

**HunterLab(58.7587, 11.2332,
0.4843)**

Conversions

Conversions Part 1

Format	Color
Hex	B995A5
RGB	185, 149, 165
RGB Percent	73%, 58%, 65%
CMY	0.2745, 0.4157, 0.3529
CMYK	0.00, 0.19, 0.11, 0.27
HSL	333°, 20%, 65%
HSV	333°, 19%, 73%
XYZ	37.5466, 34.5258, 40.2826
YIQ	161.5880, 16.3200, 12.6080

Conversions

Conversions Part 2

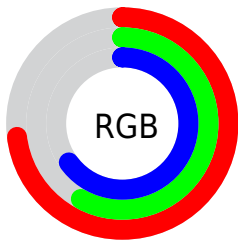
Format	Color
R _Y B	185, 149, 165
Decimal	12162469
CIE Lab	65.38, 16.10, -3.27
CIE LCh	65, 16.431, 348.527
Yxy	34.5274, 0.3342, 0.3073
Android (android.graphics.Color)	4290352549 (0xFFB995A5)
YUV	161.5880, 1.6821, 20.5323
Hunter-Lab	58.7587, 11.2332, 0.4843

Details

The HunterLab color $58.7587, 11.2332, 0.4843$ is a light color, and the websafe version is hex $CC9999$. A complement of this color would be $66.2971, -16.6525, 6.9896$, and the grayscale version is $59.9298, -3.1977, 3.2561$.

A 20% lighter version of the original color is $81.5965, 11.5404, 1.2816$, and $38.5138, 10.7605, -0.1300$ is the 20% darker color. If you saturate the color by 10%, you get $53.6390, 19.1133, -0.7556$, and if you desaturate by 10%, it is $64.2209, 3.4743, 2.0569$.

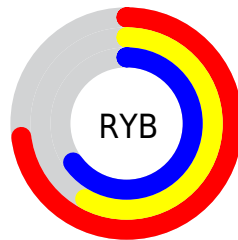
Distribution



Red (73%)

Green (58%)

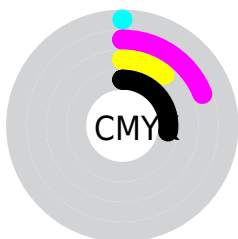
Blue (65%)



Red (73%)

Yellow (58%)

Blue (65%)

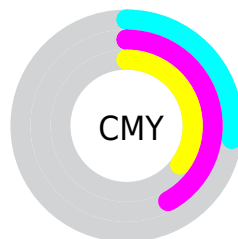


Cyan (0%)

Magenta (19%)

Yellow (11%)

Black (27%)



Cyan (27%)

Magenta (42%)

Yellow (35%)

Brightness & Saturation Gradients

These gradients show how the HunterLab color 58.7587, 11.2332, 0.4843 changes by changing the brightness by 10 percent. The first figure shows a shift by +10% for each color and the second figure -10%.

Similar to the brightness gradients but the following saturation gradients show a change of the HunterLab color 58.7587, 11.2332, 0.4843 by changing the saturation by 10% instead.

■ 58.7587, 11.2332,
0.4843

■ 58.7587, 11.2332,
0.4843

■ 179.5765, 10.7707,
5.8853

■ 48.2691, 10.9653,
0.0783

■ 81.7025, 11.5322,
1.4329

■ 38.4896, 10.6087,
-0.2789

■ 94.0845, 11.5821,
1.9670

■ 29.4776, 10.1475,
-0.5804

■ 107.0357, 11.5725,
2.5380

■ 21.3051, 9.5630,
-0.8185

■ 120.5319, 11.5081,
3.1439

■ 14.0693, 8.8296,
-0.9817

■ 134.5521, 11.3926,
3.7830

■ 7.7168, 8.8088,
-1.3356

149.0773, 11.2294,

0.0000, NaN, NaN

4.4538

0.0000, NaN, NaN

164.0906, 11.0213,
5.1549

0.0000, NaN, NaN

■ 58.7587, 11.2332,
0.4843

■ 58.7587, 11.2332,
0.4843

■ 53.6390, 19.1133,
-0.7556

■ 64.2209, 3.4743,
2.0569

■ 48.9192, 27.0337,
-1.5779

■ 69.9719, -4.1246,
3.8896

■ 44.6741, 34.8206,
-1.8756

■ 75.9728, -11.5614,
5.9307

■ 40.9872, 42.1783,
-1.5347

■ 82.1914, -18.8469,
8.1402

■ 37.9445, 48.6698,
-0.4589

■ 88.6018, -25.9985,
10.4880

■ 35.6185, 53.7615,
1.3852

■ 93.4679, -30.6734,
11.1079

■ 34.0420, 56.9757,
3.9174

■ 93.7796, -28.8834,
6.6492

■ 33.1016, 58.3944,
6.8444

■ 94.1085, -27.0011,
1.9596

■ 33.0558, 58.4617,
6.9981

■ 94.3686, -25.5174,
-1.7374

Harmonies

Analogous

The Analogous color harmony consists of three colors that are next to each other on the color wheel.



58.7600, 7.7314, -6.3299



58.7587, 11.2332, 0.4843



58.7600, 10.7440, 7.2775

Triad

The Triadic color harmony groups three colors that are evenly spaced from another and form a triangle on the color wheel.



58.7600, 11.2314, 0.4854



58.7600, -7.5241, 14.4837



58.7600, -12.1318, -7.6889

Complementary

The Complementary color scheme is a pair of colors which are on the opposite of each other on the color wheel.



58.7587, 11.2332, 0.4843



66.2971, -16.6525, 6.9896

Split Complementary

Split-complementary colors differ from the complementary color scheme. The scheme consists of three colors, the original color and two neighbors of the complement color.



58.7600, -15.8409, -1.1958



58.7587, 11.2332, 0.4843



58.7600, -13.2714, 11.3577

Square

The Square scheme is like the rectangle color scheme, but the four colors are evenly spaced on the color wheel.



58.7600, 11.2314, 0.4854



58.7600, -0.3258, 14.8177



58.7600, -16.2476, 5.7880



58.7600, -5.8992, -11.4187

Rectangle

The Rectangle color scheme consists of four colors that form a rectangle on the color wheel.



58.7587, 11.2332, 0.4843



58.7600, 8.2282, 10.9089



58.7600, -16.2476, 5.7880



58.7600, -13.7017, -5.7230

Sweetspot

The Sweet Spot groups the original color and five complimentary colors.



58.7600, 11.2314, 0.4854



88.4901, 1.2088, 3.5415



57.8034, 9.4738, -11.2959



40.8585, 0.8665, 1.5728



96.5975, -5.1542, 5.2483



43.2801, -2.3093, 2.3515

Same Dimension

The Same Dimension uses a secret algorithm to generate beautiful new colors.



58.7600, 11.2314, 0.4854



75.8930, 19.1484, -0.0598



58.7833, 7.8675, 7.6790



30.1277, 1.5831, 0.9739



27.3026, 48.3360, 5.3992



5.2467, 9.5130, -0.7018

Inverse Universe

The Inverse Universe completely reimagines the original color for something new.



58.7600, 11.2314, 0.4854



75.8930, 19.1484, -0.0598



66.2139, -13.0904, -0.5283



30.1277, 1.5831, 0.9739



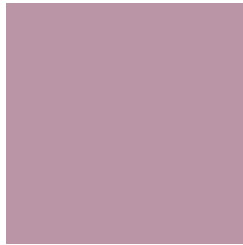
27.3026, 48.3360, 5.3992



5.2467, 9.5130, -0.7018

Previews

White Background



This preview shows how the HunterLab color 58.7587, 11.2332, 0.4843 looks on a white background.

Color Contrast Check

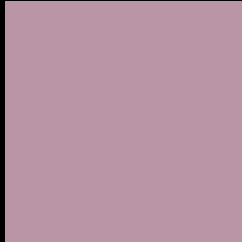
Large Text (above 18pt) WCAG AA × Fail

Any Text WCAG AA × Fail

Large Text (above 18pt) WCAG AAA × Fail

Any Text WCAG AAA × Fail

Black Background



This preview shows how the HunterLab color 58.7587, 11.2332, 0.4843 looks on a black background.

Color Contrast Check

Large Text (above 18pt) WCAG AA ✓ Pass

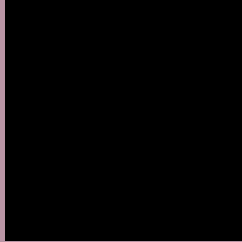
Any Text WCAG AA ✓ Pass

Large Text (above 18pt) WCAG AAA ✓ Pass

Any Text WCAG AAA ✓ Pass

If you want to check with other color combinations, try the [Color Contrast Checker](#).

HunterLab 58.7587, 11.2332, 0.4843 Background



This preview shows how black text looks on a background with the HunterLab color 58.7587, 11.2332, 0.4843.



This preview shows how white text looks on a background with the HunterLab color 58.7587, 11.2332,

0.4843.

Color Blindness Simulation

Color vision deficiency is a very complex topic, and I could not describe the different causes any better than Wikipedia does, so if you want to learn more, you should check out their [article about color blindness](#).

Dichromacy



Original Color

58.7587, 11.2332, 0.4843

Protanopia

58.8431, -1.1014, -2.0795

Deuteranopia

58.7896, 4.2058, 0.8786



Tritanopia

58.9069, 10.0820, 2.5371

Trichromacy



Original Color

58.7587, 11.2332, 0.4843

Protanomaly

58.8172, 3.0996, -1.0464

Deuteranomaly

58.7230, 6.8477, 0.8437

Tritanomaly

58.9369, 10.2399, 2.1087

Monochromacy



Original Color

58.7587, 11.2332, 0.4843

Achromatopsia

60.1088, -3.2073, 3.2658

Achromatomaly

59.4174, 1.9025, 2.0701

CSS Examples

Text

The CSS property to change the color of the text to HunterLab 58.7587, 11.2332, 0.4843 is called "color". The color property can be set on classes, ids or directly on the HTML element.

This example shows how text in the color `rgb(185, 149, 165)` looks like.

```
.text, #text, p{  
    color:rgb(185, 149, 165)  
}
```

If you want to add a text shadow in that color use the text-shadow property, you can generate a text shadow directly with our [CSS Text Shadow Generator](#).

Here you see how black text with a 4 pixel rgb(185, 149, 165) colored shadow looks like.

```
.shadow{ text-shadow: 4px 4px 2px rgb(185, 149, 165) }
```

Border

The CSS property to change the border of an element to HunterLab 58.7587, 11.2332, 0.4843 is called "border". The border property can be set on classes, ids or directly on the HTML element.

This example shows the color as border, it can be applied via the CSS property "border" or "border-color".

```
.border, #border, table{ border:4px solid rgb(185, 149, 165) }
```


If only the border color should be changed use the property `border-color`.

```
.border{ border-color:rgb(185, 149, 165) }
```

If you want to add a box shadow in that color use:

Here you see how a box with a 4 pixel `rgb(185, 149, 165)` colored shadow looks like.

```
.boxshadow{ -moz-box-shadow:4px 4px 4px  
4px rgb(185, 149, 165); -webkit-box-  
shadow:4px 4px 4px 4px rgb(185, 149, 165);  
box-shadow:4px 4px 4px 4px rgb(185, 149,  
165) }
```

Background

The CSS property to change the background color of an element to HunterLab 58.7587, 11.2332, 0.4843 is called "background". The background property can be set on classes, ids or directly on the HTML element.

```
.background, #background, body{  
background: rgb(185, 149, 165) }
```

If only the background color should be changed can be used:

```
.background{ background-color: rgb(185,  
149, 165) }
```

This example shows the color as background, it is applied via the CSS property "background".

To optimize and compress your CSS code, you can use our [online CSS compressor and optimizer](#) based on csstidy. If you want to create a linear or radial gradient as background or border, check our [CSS Gradient Generator](#).

Hey! You found this booklet interesting? Support Converting Colors with the new Membership Option!

The pro membership hides all ads, plus gives you double the colors in the color bucket, and more awesome pro features!

[Learn more, Memberships starting at \\$2.50/m!](#)

**Follow me
on Twitter!**

@ConvertingColor