

# Converting Colors

HunterLab(58.6932, 4.2191,  
20.1420)

Have a look what the booklet for  
HunterLab(58.6932, 4.2191,  
20.1420) contains.

<b>HunterLab(58.7284, 4.3702, 20.1928)</b> .....	3
<b><i>Conversions</i></b> .....	4
<b><i>Details</i></b> .....	6
<b><i>Harmonies</i></b> .....	12
<b><i>Previews</i></b> .....	24
<b><i>Color Blindness Simulation</i></b> .....	28
<b><i>CSS Examples</i></b> .....	31

# Color

**HunterLab(58.7284, 4.3702,  
20.1928)**

# Conversions

## Conversions Part 1

Format	Color
Hex	BD9872
RGB	189, 152, 114
RGB Percent	74%, 60%, 45%
CMY	0.2588, 0.4039, 0.5529
CMYK	0.00, 0.20, 0.40, 0.26
HSL	30°, 36%, 59%
HSV	30°, 40%, 74%
XYZ	35.2518, 34.4902, 20.7190
YIQ	158.7310, 34.2500, -3.9740

# Conversions

## Conversions Part 2

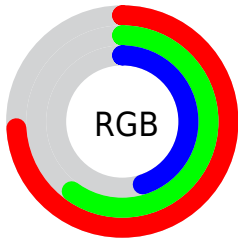
Format	Color
<a href="#">RYB</a>	<a href="#">187, 189, 114</a>
Decimal	<a href="#">12425330</a>
CIELab	<a href="#">65.35, 8.59, 25.22</a>
CIELCh	<a href="#">65, 26.647, 71.191</a>
Yxy	<a href="#">34.4919, 0.3897, 0.3813</a>
Android (android.graphics.Color)	<a href="#">4290615410</a> ( <a href="#">0xFFBD9872</a> )
YUV	<a href="#">158.7310, -22.0524, 26.5459</a>
Hunter-Lab	<a href="#">58.7284, 4.3702, 20.1928</a>

# Details

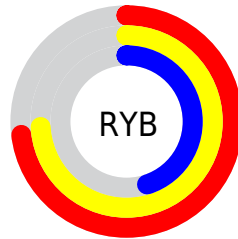
The HunterLab color **58.7284, 4.3702, 20.1928** is a light color, and the websafe version is hex **CC9966**. A complement of this color would be **54.2068, -5.3234, -19.3500**, and the grayscale version is **58.8502, -3.1401, 3.1974**.

A 20% lighter version of the original color is **81.5406, 3.8864, 24.0810**, and **38.4153, 4.5134, 16.0318** is the 20% darker color. If you saturate the color by 10%, you get **55.8538, 7.1793, 23.0243**, and if you desaturate by 10%, it is **61.7366, 1.8754, 16.7979**.

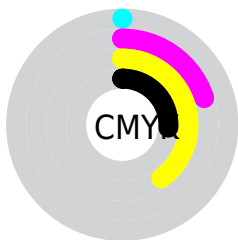
# Distribution



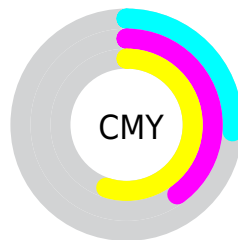
- Red (74%)
- Green (60%)
- Blue (45%)



- Red (73%)
- Yellow (74%)
- Blue (45%)



- Cyan (0%)
- Magenta (20%)
- Yellow (40%)
- Black (26%)



- Cyan (26%)
- Magenta (40%)
- Yellow (55%)

# Brightness & Saturation Gradients

These gradients show how the HunterLab color 58.7284, 4.3702, 20.1928 changes by changing the brightness by 10 percent. The first figure shows a shift by +10% for each color and the second figure -10%.

Similar to the brightness gradients but the following saturation gradients show a change of the HunterLab color 58.7284, 4.3702, 20.1928 by changing the saturation by 10% instead.



 58.7284, 4.3702,  
20.1928

 58.7284, 4.3702,  
20.1928

179.5327, 1.1642,  
36.9962


 48.2408, 4.4757,  
18.1228

 81.6687, 3.9745,  
24.1395

 38.4633, 4.5146,  
15.9578


 94.0492, 3.6995,  
26.0438

 29.4536, 4.4744,  
13.6642


 106.9988, 3.3777,  
27.9158

 21.2836, 4.3405,  
11.1908

 120.4935, 3.0124,  
29.7627

 14.0505, 4.0913,  
9.4684

134.5123, 2.6063,  
31.5901

 7.6968, 4.4528,  
5.3877

149.0361, 2.1616,

0.0000, NaN, NaN

33.4025

0.0000, NaN, NaN

164.0480, 1.6803,  
35.2035

0.0000, NaN, NaN

■ 58.7284, 4.3702,  
20.1928

■ 58.7284, 4.3702,  
20.1928

■ 55.8538, 7.1793,  
23.0243

■ 61.7366, 1.8754,  
16.7979

■ 53.1197, 10.3191,  
25.2400

■ 64.8640, -0.3134,  
12.8882

■ 50.5387, 13.7877,  
26.7955

■ 68.1026, -2.2168,  
8.5129

■ 48.1223, 17.5719,  
27.6590

■ 71.4438, -3.8545,  
3.7171

■ 45.8808, 21.6387,  
27.8248

■ 74.8797, -5.2467,  
-1.4584

■ 43.8157, 25.8970,  
27.4291

■ 78.4034, -6.4128,  
-6.9772

■ 43.7525, 26.0323,  
27.4158

■ 82.0085, -7.3714,  
-12.8067

■ 85.2949, -10.3229,  
-13.3860

■ 88.3056, -15.0462,  
-9.3713

# Harmonies

## Analogous

The Analogous color harmony consists of three colors that are next to each other on the color wheel.



58.7298, 14.9532, 15.7214



58.7284, 4.3702, 20.1928



58.7298, -7.4807, 20.6894

# Triad

The Triadic color harmony groups three colors that are evenly spaced from another and form a triangle on the color wheel.



58.7298, 4.3679, 20.1936



58.7298, -23.8005, -1.1535



58.7298, 12.5841, -15.4995

# Complementary

The Complementary color scheme is a pair of colors which are on the opposite of each other on the color wheel.



58.7284, 4.3702, 20.1928



54.2068, -5.3234, -19.3500

# Split Complementary

Split-complementary colors differ from the complementary color scheme. The scheme consists of three colors, the original color and two neighbors of the complement color.



58.7298, 1.3371, -22.1969



58.7284, 4.3702, 20.1928



58.7298, -19.2718, -12.8887

# Square

The Square scheme is like the rectangle color scheme, but the four colors are evenly spaced on the color wheel.



58.7298, 4.3679, 20.1936



58.7298, -23.1296, 9.7457



58.7298, -10.2827, -21.1568



58.7298, 19.9495, -4.2056



# Rectangle

The Rectangle color scheme consists of four colors that form a rectangle on the color wheel.



58.7284, 4.3702, 20.1928



58.7298, -14.4441, 18.8404



58.7298, -10.2827, -21.1568



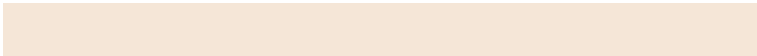
58.7298, 9.0964, -18.4550

# Sweetspot

The Sweet Spot groups the original color and five complimentary colors.



58.7298, 4.3679, 20.1936



90.0393, -2.3617, 12.9178



50.1044, 28.5654, -3.5244



41.4909, -0.9457, 6.3502



97.7295, -5.2146, 5.3098



44.2712, -2.3622, 2.4053



# Same Dimension

The Same Dimension uses a secret algorithm to generate beautiful new colors.



58.7298, 4.3679, 20.1936



75.0923, 9.2460, 30.5001



69.5909, -13.4871, 29.0819



32.1152, -1.0711, 3.9366



36.1014, 20.8634, 22.6108



8.0078, 2.2845, 4.9743



# Inverse Universe

The Inverse Universe completely reimagines the original color for something new.



54.2068, -5.3234, -19.3500



67.7651, -6.2435, -33.7950



43.9165, 13.1446, -37.7062



31.5937, -2.2105, -0.5987



28.1407, 7.2306, -50.7822

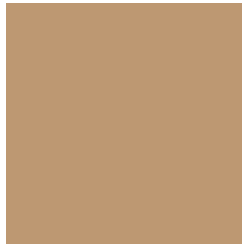


6.6419, -0.4907, -7.2425



# Previews

## White Background



This preview shows how the HunterLab color 58.7284, 4.3702, 20.1928 looks on a white background.

## Color Contrast Check

Large Text (above 18pt) WCAG AA × Fail

Any Text WCAG AA × Fail

Large Text (above 18pt) WCAG AAA × Fail

Any Text WCAG AAA × Fail



# Black Background



This preview shows how the HunterLab color 58.7284, 4.3702, 20.1928 looks on a black background.

## Color Contrast Check

Large Text (above 18pt) WCAG AA ✓ Pass

Any Text WCAG AA ✓ Pass

Large Text (above 18pt) WCAG AAA ✓ Pass

Any Text WCAG AAA ✓ Pass

If you want to check with other color combinations, try the [Color Contrast Checker](#).

## HunterLab 58.7284, 4.3702, 20.1928 Background



This preview shows how black text looks on a background with the HunterLab color 58.7284, 4.3702, 20.1928.



This preview shows how white text looks on a background with the HunterLab color 58.7284, 4.3702,



# Color Blindness Simulation

Color vision deficiency is a very complex topic, and I could not describe the different causes any better than Wikipedia does, so if you want to learn more, you should check out their [article about color blindness](#).

## Dichromacy



### Original Color

58.7284, 4.3702, 20.1928

### Protanopia

58.9394, -5.0086, 19.3008

### Deuteranopia

58.7284, 4.3702, 20.1928



## Tritanopia

58.6207, 14.4720, 3.6581

# Trichromacy



## Original Color

58.7284, 4.3702, 20.1928

## Protanomaly

58.7391, -1.2927, 19.4942

## Deuteranomaly

58.7284, 4.3702, 20.1928

## Tritanomaly

58.5997, 10.7974, 10.4053

# Monochromacy



## Original Color

58.7284, 4.3702, 20.1928

## Achromatopsia

58.8816, -3.1418, 3.1991

## Achromatomaly

58.5715, -0.6385, 9.7749

# CSS Examples

## Text

The CSS property to change the color of the text to HunterLab 58.7284, 4.3702, 20.1928 is called "color". The color property can be set on classes, ids or directly on the HTML element.

This example shows how text in the color `rgb(189, 152, 114)` looks like.

```
.text, #text, p{  
    color:rgb(189, 152, 114)  
}
```

If you want to add a text shadow in that color use the text-shadow property, you can generate a text shadow directly with our [CSS Text Shadow Generator](#).

Here you see how black text with a 4 pixel rgb(189, 152, 114) colored shadow looks like.

```
.shadow{ text-shadow: 4px 4px 2px rgb(189, 152, 114) }
```

## Border

The CSS property to change the border of an element to HunterLab 58.7284, 4.3702, 20.1928 is called "border". The border property can be set on classes, ids or directly on the HTML element.

This example shows the color as border, it can be applied via the CSS property "border" or "border-color".

```
.border, #border, table{ border:4px solid rgb(189, 152, 114) }
```



If only the border color should be changed use the property `border-color`.

```
.border{ border-color:rgb(189, 152, 114) }
```

If you want to add a box shadow in that color use:

Here you see how a box with a 4 pixel `rgb(189, 152, 114)` colored shadow looks like.

```
.boxshadow{ -moz-box-shadow:4px 4px 4px  
4px rgb(189, 152, 114); -webkit-box-  
shadow:4px 4px 4px 4px rgb(189, 152, 114);  
box-shadow:4px 4px 4px 4px rgb(189, 152,  
114) }
```

# Background

The CSS property to change the background color of an element to HunterLab 58.7284, 4.3702, 20.1928 is called "background". The background property can be set on classes, ids or directly on the HTML element.

```
.background, #background, body{  
background: rgb(189, 152, 114) }
```

If only the background color should be changed can be used:

```
.background{ background-color: rgb(189,  
152, 114) }
```

This example shows the color as background, it is applied via the CSS property "background".

To optimize and compress your CSS code, you can use our [online CSS compressor and optimizer](#) based on csstidy. If you want to create a linear or radial gradient as background or border, check our [CSS Gradient Generator](#).

Hey! You found this booklet interesting? Support Converting Colors with the new Membership Option!

The pro membership hides all ads, plus gives you double the colors in the color bucket, and more awesome pro features!

**[Learn more, Memberships starting at \\$2.50/m!](#)**

**Follow me  
on Twitter!**

@ConvertingColor