

Converting Colors

HunterLab(58.6992, 15.8796,
21.3501)

Have a look what the booklet for
HunterLab(58.6992, 15.8796,
21.3501) contains.

HunterLab(58.6071, 16.1781, 21.1825)	3
<i>Conversions</i>	4
<i>Details</i>	6
<i>Harmonies</i>	12
<i>Previews</i>	24
<i>Color Blindness Simulation</i>	28
<i>CSS Examples</i>	31

Color

**HunterLab(58.6071, 16.1781,
21.1825)**

Conversions

Conversions Part 1

Format	Color
Hex	D18F6F
RGB	209, 143, 111
RGB Percent	82%, 56%, 44%
CMY	0.1804, 0.4392, 0.5647
CMYK	0.00, 0.32, 0.47, 0.18
HSL	20°, 52%, 63%
HSV	20°, 47%, 82%
XYZ	38.9862, 34.3479, 19.6139
YIQ	159.0860, 49.6080, 4.0400

Conversions

Conversions Part 2

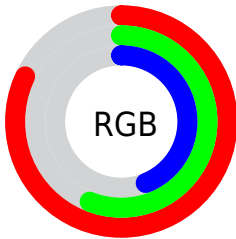
Format	Color
R_{YB}	209, 159, 111
Decimal	13733743
CIE _{Lab}	65.24, 21.34, 27.11
CIE _{LCh}	65, 34.501, 51.800
Yxy	34.3496, 0.4194, 0.3695
Android (android.graphics.Color)	4291923823 (0xFFD18F6F)
YUV	159.0860, -23.7064, 43.7746
Hunter-Lab	58.6071, 16.1781, 21.1825

Details

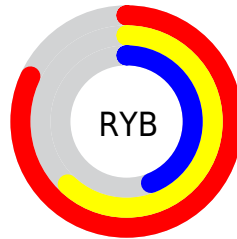
The HunterLab color **58.6071, 16.1781, 21.1825** is a light color, and the websafe version is hex **CC9966**. A complement of this color would be **62.7898, -13.8358, -18.5108**, and the grayscale version is **58.9973, -3.1479, 3.2054**.

A 20% lighter version of the original color is **79.8980, 11.6887, 23.7244**, and **38.3257, 15.2424, 16.6080** is the 20% darker color. If you saturate the color by 10%, you get **54.7518, 21.5029, 23.6151**, and if you desaturate by 10%, it is **62.7372, 11.1966, 18.2575**.

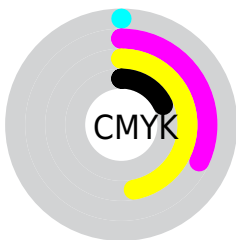
Distribution



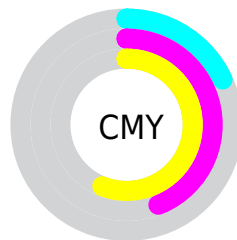
- Red (82%)
- Green (56%)
- Blue (44%)



- Red (82%)
- Yellow (62%)
- Blue (44%)



- Cyan (0%)
- Magenta (32%)
- Yellow (47%)
- Black (18%)



- Cyan (18%)
- Magenta (44%)
- Yellow (56%)

Brightness & Saturation Gradients

These gradients show how the HunterLab color 58.6071, 16.1781, 21.1825 changes by changing the brightness by 10 percent. The first figure shows a shift by +10% for each color and the second figure -10%.

Similar to the brightness gradients but the following saturation gradients show a change of the HunterLab color 58.6071, 16.1781, 21.1825 by changing the saturation by 10% instead.

■ 58.6071, 16.1781,
21.1825

■ 58.6071, 16.1781,
21.1825

179.3567, 17.5787,
38.8226

■ 48.1272, 15.6598,
18.9872

■ 81.5334, 16.9434,
25.3531

■ 38.3580, 15.0417,
16.6850

■ 93.9073, 17.2132,
27.3588

■ 29.3573, 14.3061,
14.2400

■ 106.8507, 17.4158,
29.3265

■ 21.1971, 13.4342,
11.5976

■ 120.3394, 17.5563,
31.2642

■ 13.9753, 12.4047,
9.7827

134.3524, 17.6392,
33.1780

■ 7.6158, 12.3081,
5.3311

148.8707, 17.6685,

0.0000, INF, NaN

35.0732

0.0000, NaN, NaN

163.8773, 17.6474,
36.9536

0.0000, NaN, NaN

■ 58.6071, 16.1781,
21.1825

■ 58.6071, 16.1781,
21.1825

■ 54.7518, 21.5029,
23.6151

■ 62.7372, 11.1966,
18.2575

■ 51.2018, 27.1473,
25.4680

■ 67.1065, 6.5702,
14.9151

■ 47.9961, 33.0331,
26.6586

■ 71.6892, 2.2820,
11.2223

■ 45.1724, 39.0261,
27.1251

■ 76.4618, -1.6917,
7.2341

■ 42.7628, 44.9167,
26.8777

■ 81.4041, -5.3784,
2.9953

■ 42.0957, 46.6609,
26.7560

■ 86.4990, -8.8066,
-1.4581

■ 91.6506, -12.4556,
-4.9464

■ 96.0704, -19.2883,
0.4732

Harmonies

Analogous

The Analogous color harmony consists of three colors that are next to each other on the color wheel.



58.6085, 26.7315, 12.6525



58.6071, 16.1781, 21.1825



58.6085, 1.1208, 24.6649

Triad

The Triadic color harmony groups three colors that are evenly spaced from another and form a triangle on the color wheel.



58.6085, 16.1753, 21.1833



58.6085, -29.4763, 7.0395



58.6085, 8.1889, -29.1589

Complementary

The Complementary color scheme is a pair of colors which are on the opposite of each other on the color wheel.



58.6071, 16.1781, 21.1825



62.7898, -13.8358, -18.5108

Split Complementary

Split-complementary colors differ from the complementary color scheme. The scheme consists of three colors, the original color and two neighbors of the complement color.



58.6085, -7.2637, -31.7779



58.6071, 16.1781, 21.1825



58.6085, -27.9992, -8.1717

Square

The Square scheme is like the rectangle color scheme, but the four colors are evenly spaced on the color wheel.



58.6085, 16.1753, 21.1833



58.6085, -24.4854, 17.9803



58.6085, -20.2211, -23.3091



58.6085, 21.8015, -16.8672

Rectangle

The Rectangle color scheme consists of four colors that form a rectangle on the color wheel.



58.6071, 16.1781, 21.1825



58.6085, -9.0205, 24.4899



58.6085, -20.2211, -23.3091



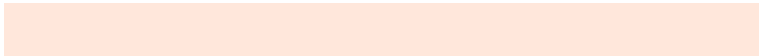
58.6085, 3.0020, -31.3071

Sweetspot

The Sweet Spot groups the original color and five complimentary colors.



58.6085, 16.1753, 21.1833



91.3888, 1.4623, 12.7255



53.0448, 41.8140, -13.6410



41.6848, 1.1918, 6.3801

0.0000, NaN, NaN



46.2646, -2.4686, 2.5136

Same Dimension

The Same Dimension uses a secret algorithm to generate beautiful new colors.



58.6085, 16.1753, 21.1833



68.6834, 26.7596, 29.5076



72.0966, -7.8191, 31.9209



35.2559, -0.3367, 3.8723



33.2967, 35.9584, 21.1468



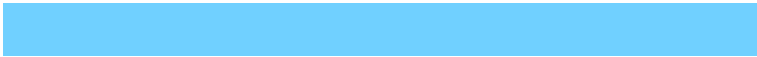
8.7380, 6.2519, 5.4938

Inverse Universe

The Inverse Universe completely reimagines the original color for something new.



62.7898, -13.8358, -18.5108



74.8115, -17.8180, -29.1925



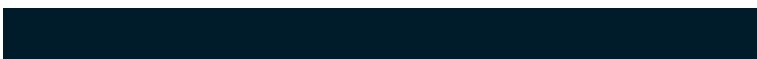
48.6570, 9.9032, -43.3480



35.6779, -3.3025, -0.0818



38.3717, -6.4965, -33.9372



9.8212, -2.6528, -6.5490

Previews

White Background



This preview shows how the HunterLab color 58.6071, 16.1781, 21.1825 looks on a white background.

Color Contrast Check

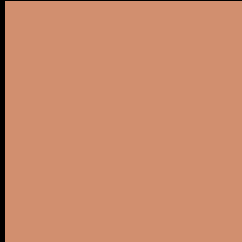
Large Text (above 18pt) WCAG AA × Fail

Any Text WCAG AA × Fail

Large Text (above 18pt) WCAG AAA × Fail

Any Text WCAG AAA × Fail

Black Background



This preview shows how the HunterLab color 58.6071, 16.1781, 21.1825 looks on a black background.

Color Contrast Check

Large Text (above 18pt) WCAG AA ✓ Pass

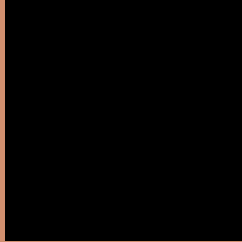
Any Text WCAG AA ✓ Pass

Large Text (above 18pt) WCAG AAA ✓ Pass

Any Text WCAG AAA ✓ Pass

If you want to check with other color combinations, try the [Color Contrast Checker](#).

HunterLab 58.6071, 16.1781, 21.1825 Background



This preview shows how black text looks on a background with the HunterLab color 58.6071, 16.1781, 21.1825.



This preview shows how white text looks on a background with the HunterLab color 58.6071, 16.1781,

Color Blindness Simulation

Color vision deficiency is a very complex topic, and I could not describe the different causes any better than Wikipedia does, so if you want to learn more, you should check out their [article about color blindness](#).

Dichromacy



Original Color

58.6071, 16.1781, 21.1825

Protanopia

58.8645, -5.2315, 18.9170

Deuteranopia

58.7433, 4.2317, 21.6688



Tritanopia

58.5766, 24.2132, 8.1603

Trichromacy



Original Color

58.6071, 16.1781, 21.1825

Protanomaly

58.4898, 2.1762, 19.6377

Deuteranomaly

58.7290, 8.4287, 21.4434

Tritanomaly

58.6126, 21.1185, 13.2999

Monochromacy



Original Color

58.6071, 16.1781, 21.1825

Achromatopsia

58.8816, -3.1418, 3.1991

Achromatomaly

58.3803, 3.0297, 10.0367

CSS Examples

Text

The CSS property to change the color of the text to HunterLab 58.6071, 16.1781, 21.1825 is called "color". The color property can be set on classes, ids or directly on the HTML element.

This example shows how text in the color `rgb(209, 143, 111)` looks like.

```
.text, #text, p{  
    color:rgb(209, 143, 111)  
}
```

If you want to add a text shadow in that color use the text-shadow property, you can generate a text shadow directly with our [CSS Text Shadow Generator](#).

Here you see how black text with a 4 pixel rgb(209, 143, 111) colored shadow looks like.

```
.shadow{ text-shadow: 4px 4px 2px rgb(209, 143, 111) }
```

Border

The CSS property to change the border of an element to HunterLab 58.6071, 16.1781, 21.1825 is called "border". The border property can be set on classes, ids or directly on the HTML element.

This example shows the color as border, it can be applied via the CSS property "border" or "border-color".

```
.border, #border, table{ border:4px solid rgb(209, 143, 111) }
```


If only the border color should be changed use the property `border-color`.

```
.border{ border-color:rgb(209, 143, 111) }
```

If you want to add a box shadow in that color use:

Here you see how a box with a 4 pixel `rgb(209, 143, 111)` colored shadow looks like.

```
.boxshadow{ -moz-box-shadow:4px 4px 4px  
4px rgb(209, 143, 111); -webkit-box-  
shadow:4px 4px 4px 4px rgb(209, 143, 111);  
box-shadow:4px 4px 4px 4px rgb(209, 143,  
111) }
```

Background

The CSS property to change the background color of an element to HunterLab 58.6071, 16.1781, 21.1825 is called "background". The background property can be set on classes, ids or directly on the HTML element.

```
.background, #background, body{  
background: rgb(209, 143, 111) }
```

If only the background color should be changed can be used:

```
.background{ background-color: rgb(209,  
143, 111) }
```

This example shows the color as background, it is applied via the CSS property "background".

To optimize and compress your CSS code, you can use our [online CSS compressor and optimizer](#) based on csstidy. If you want to create a linear or radial gradient as background or border, check our [CSS Gradient Generator](#).

Hey! You found this booklet interesting? Support Converting Colors with the new Membership Option!

The pro membership hides all ads, plus gives you double the colors in the color bucket, and more awesome pro features!

[Learn more, Memberships starting at \\$2.50/m!](#)

**Follow me
on Twitter!**

@ConvertingColor