

Converting Colors

HunterLab(58.7415, 14.7065,
17.0593)

Have a look what the booklet for
HunterLab(58.7415, 14.7065,
17.0593) contains.

HunterLab(58.7736, 14.5757, 17.2349)	3
<i>Conversions</i>	4
<i>Details</i>	6
<i>Harmonies</i>	12
<i>Previews</i>	24
<i>Color Blindness Simulation</i>	28
<i>CSS Examples</i>	31

Color

**HunterLab(58.7736, 14.5757,
17.2349)**

Conversions

Conversions Part 1

Format	Color
Hex	CC917C
RGB	204, 145, 124
RGB Percent	80%, 57%, 49%
CMY	0.2000, 0.4314, 0.5137
CMYK	0.00, 0.29, 0.39, 0.20
HSL	16°, 44%, 64%
HSV	16°, 39%, 80%
XYZ	38.6653, 34.5434, 23.6984
YIQ	160.2470, 41.9050, 5.9770

Conversions

Conversions Part 2

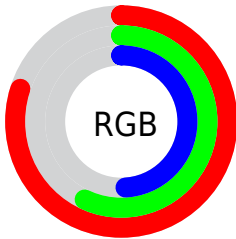
Format	Color
R _Y B	204, 152, 124
Decimal	13406588
CIE Lab	65.39, 19.65, 20.03
CIE LCh	65, 28.058, 45.542
Yxy	34.5450, 0.3990, 0.3565
Android (android.graphics.Color)	4291596668 (0xFFCC917C)
YUV	160.2470, -17.8698, 38.3714
Hunter-Lab	58.7736, 14.5757, 17.2349

Details

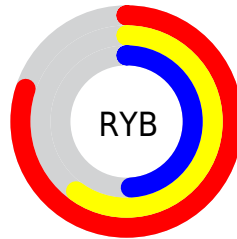
The HunterLab color **58.7736, 14.5757, 17.2349** is a light color, and the websafe version is hex **CC9999**. A complement of this color would be **65.1997, -15.1465, -12.0381**, and the grayscale version is **59.4510, -3.1722, 3.2301**.

A 20% lighter version of the original color is **80.7968, 12.3676, 19.4800**, and **38.4829, 13.7600, 13.6981** is the 20% darker color. If you saturate the color by 10%, you get **54.5745, 20.1415, 19.8680**, and if you desaturate by 10%, it is **63.2629, 9.3358, 14.2662**.

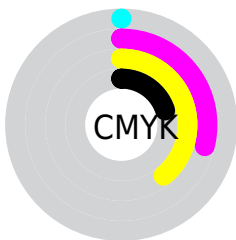
Distribution



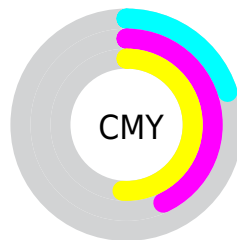
- Red (80%)
- Green (57%)
- Blue (49%)



- Red (80%)
- Yellow (60%)
- Blue (49%)



- Cyan (0%)
- Magenta (29%)
- Yellow (39%)
- Black (20%)



- Cyan (20%)
- Magenta (43%)
- Yellow (51%)

Brightness & Saturation Gradients

These gradients show how the HunterLab color 58.7736, 14.5757, 17.2349 changes by changing the brightness by 10 percent. The first figure shows a shift by +10% for each color and the second figure -10%.

Similar to the brightness gradients but the following saturation gradients show a change of the HunterLab color 58.7736, 14.5757, 17.2349 by changing the saturation by 10% instead.

■ 58.7736, 14.5757,
17.2349

■ 58.7736, 14.5757,
17.2349

179.5983, 15.3753,
31.7872

■ 48.2831, 14.1378,
15.5010

■ 81.7192, 15.1908,
20.5812

■ 38.5026, 13.6036,
13.7031

■ 94.1021, 15.3897,
22.2133

■ 29.4895, 12.9558,
11.8157

■ 107.0540, 15.5238,
23.8280

■ 21.3158, 12.1753,
9.7980

120.5510, 15.5982,
25.4305

■ 14.0786, 11.2388,
7.9375

134.5719, 15.6171,
27.0248

■ 7.7267, 11.0657,
5.4087

149.0978, 15.5842,

0.0000, NaN, NaN

28.6141

0.0000, NaN, NaN

164.1117, 15.5027,
30.2009

0.0000, NaN, NaN

■ 58.7736, 14.5757,
17.2349

■ 58.7736, 14.5757,
17.2349

■ 54.5745, 20.1415,
19.8680

■ 63.2629, 9.3358,
14.2662

■ 50.7027, 26.0119,
22.0809

■ 68.0021, 4.4287,
11.0261

■ 47.2061, 32.1082,
23.7804

■ 72.9622, -0.1661,
7.5675

■ 44.1335, 38.2871,
24.8715

■ 78.1175, -4.4747,
3.9308

■ 41.5318, 44.3234,
25.2839

■ 83.4462, -8.5260,
0.1466

■ 39.4320, 49.8880,
25.1020

■ 88.9305, -12.3489,
-3.7619

■ 39.2875, 50.2879,
25.0891

■ 94.1397, -18.2986,
-1.8967

■ 95.6961, -20.6485,
-0.0097

Harmonies

Analogous

The Analogous color harmony consists of three colors that are next to each other on the color wheel.



58.7750, 21.7319, 8.9766



58.7736, 14.5757, 17.2349



58.7750, 2.9539, 21.2459

Triad

The Triadic color harmony groups three colors that are evenly spaced from another and form a triangle on the color wheel.



58.7750, 14.5731, 17.2358



58.7750, -24.5583, 8.6024



58.7750, 3.4097, -23.2219

Complementary

The Complementary color scheme is a pair of colors which are on the opposite of each other on the color wheel.



58.7736, 14.5757, 17.2349



65.1997, -15.1465, -12.0381

Split Complementary

Split-complementary colors differ from the complementary color scheme. The scheme consists of three colors, the original color and two neighbors of the complement color.



58.7750, -8.9938, -23.3807



58.7736, 14.5757, 17.2349



58.7750, -24.4585, -3.2315

Square

The Square scheme is like the rectangle color scheme, but the four colors are evenly spaced on the color wheel.



58.7750, 14.5731, 17.2358



58.7750, -19.2595, 17.0111



58.7750, -18.9744, -15.4736



58.7750, 14.9306, -15.0767

Rectangle

The Rectangle color scheme consists of four colors that form a rectangle on the color wheel.



58.7736, 14.5757, 17.2349



58.7750, -5.4321, 21.6427



58.7750, -18.9744, -15.4736



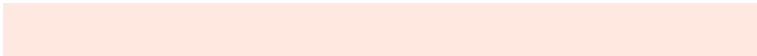
58.7750, -0.8107, -24.2598

Sweetspot

The Sweet Spot groups the original color and five complimentary colors.



58.7750, 14.5731, 17.2358



91.9900, 1.4856, 11.0736



55.4199, 34.3020, -13.7643



42.1656, 1.0459, 5.3979

0.0000, NaN, NaN



46.2646, -2.4686, 2.5136

Same Dimension

The Same Dimension uses a secret algorithm to generate beautiful new colors.



58.7750, 14.5731, 17.2358



71.0710, 24.7439, 25.0585



69.6948, -4.9706, 26.6363



34.1829, -0.0403, 3.5799



31.3779, 39.2734, 20.0224



7.9677, 6.6130, 5.0255

Inverse Universe

The Inverse Universe completely reimagines the original color for something new.



65.1997, -15.1465, -12.0381



80.8974, -21.1042, -19.8593



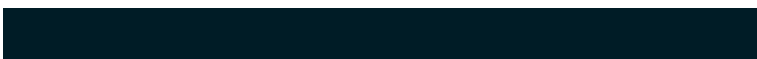
53.4711, 3.8518, -30.3274



34.9416, -3.5013, 0.1397



40.8901, -11.1061, -27.1342



9.9092, -3.3972, -5.0521

Previews

White Background



This preview shows how the HunterLab color 58.7736, 14.5757, 17.2349 looks on a white background.

Color Contrast Check

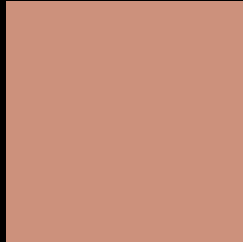
Large Text (above 18pt) WCAG AA × Fail

Any Text WCAG AA × Fail

Large Text (above 18pt) WCAG AAA × Fail

Any Text WCAG AAA × Fail

Black Background



This preview shows how the HunterLab color 58.7736, 14.5757, 17.2349 looks on a black background.

Color Contrast Check

Large Text (above 18pt) WCAG AA ✓ Pass

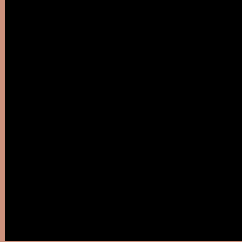
Any Text WCAG AA ✓ Pass

Large Text (above 18pt) WCAG AAA ✓ Pass

Any Text WCAG AAA ✓ Pass

If you want to check with other color combinations, try the [Color Contrast Checker](#).

HunterLab 58.7736, 14.5757, 17.2349 Background



This preview shows how black text looks on a background with the HunterLab color 58.7736, 14.5757, 17.2349.



This preview shows how white text looks on a background with the HunterLab color 58.7736, 14.5757,

17.2349.

Color Blindness Simulation

Color vision deficiency is a very complex topic, and I could not describe the different causes any better than Wikipedia does, so if you want to learn more, you should check out their [article about color blindness](#).

Dichromacy



Original Color

58.7736, 14.5757, 17.2349

Protanopia

58.9345, -4.4703, 14.9905

Deuteranopia

58.9723, 4.1301, 17.5709



Tritanopia

58.8066, 21.3096, 6.6595

Trichromacy



Original Color

58.7736, 14.5757, 17.2349

Protanomaly

58.7311, 2.0996, 15.6102

Deuteranomaly

58.8049, 7.8061, 17.4785

Tritanomaly

58.6692, 19.0556, 10.6234

Monochromacy



Original Color

58.7736, 14.5757, 17.2349

Achromatopsia

59.2902, -3.1636, 3.2213

Achromatomaly

58.9740, 2.4059, 8.6300

CSS Examples

Text

The CSS property to change the color of the text to HunterLab 58.7736, 14.5757, 17.2349 is called "color". The color property can be set on classes, ids or directly on the HTML element.

This example shows how text in the color `rgb(204, 145, 124)` looks like.

```
.text, #text, p{  
    color:rgb(204, 145, 124)  
}
```

If you want to add a text shadow in that color use the text-shadow property, you can generate a text shadow directly with our [CSS Text Shadow Generator](#).

Here you see how black text with a 4 pixel rgb(204, 145, 124) colored shadow looks like.

```
.shadow{ text-shadow: 4px 4px 2px rgb(204, 145, 124) }
```

Border

The CSS property to change the border of an element to HunterLab 58.7736, 14.5757, 17.2349 is called "border". The border property can be set on classes, ids or directly on the HTML element.

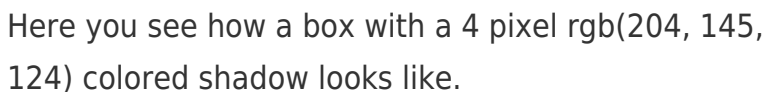
This example shows the color as border, it can be applied via the CSS property "border" or "border-color".

```
.border, #border, table{ border:4px solid rgb(204, 145, 124) }
```


If only the border color should be changed use the property `border-color`.

```
.border{ border-color:rgb(204, 145, 124) }
```

If you want to add a box shadow in that color use:



Here you see how a box with a 4 pixel `rgb(204, 145, 124)` colored shadow looks like.

```
.boxshadow{ -moz-box-shadow:4px 4px 4px  
4px rgb(204, 145, 124); -webkit-box-  
shadow:4px 4px 4px 4px rgb(204, 145, 124);  
box-shadow:4px 4px 4px 4px rgb(204, 145,  
124) }
```

Background

The CSS property to change the background color of an element to HunterLab 58.7736, 14.5757, 17.2349 is called "background". The background property can be set on classes, ids or directly on the HTML element.

```
.background, #background, body{  
background: rgb(204, 145, 124) }
```

If only the background color should be changed can be used:

```
.background{ background-color: rgb(204,  
145, 124) }
```

This example shows the color as background, it is applied via the CSS property "background".

To optimize and compress your CSS code, you can use our [online CSS compressor and optimizer](#) based on csstidy. If you want to create a linear or radial gradient as background or border, check our [CSS Gradient Generator](#).

Hey! You found this booklet interesting? Support Converting Colors with the new Membership Option!

The pro membership hides all ads, plus gives you double the colors in the color bucket, and more awesome pro features!

[Learn more, Memberships starting at \\$2.50/m!](#)

**Follow me
on Twitter!**

@ConvertingColor