

Converting Colors

HunterLab(58.8337, 5.2562,
5.0942)

Have a look what the booklet for
HunterLab(58.8337, 5.2562, 5.0942)
contains.

HunterLab(58.8337, 5.2562, 5.0942)	3
<i>Conversions</i>	4
<i>Details</i>	6
<i>Harmonies</i>	12
<i>Previews</i>	24
<i>Color Blindness Simulation</i>	28
<i>CSS Examples</i>	31

Color

**HunterLab(58.8337, 5.2562,
5.0942)**

Conversions

Conversions Part 1

Format	Color
Hex	B2999B
RGB	178, 153, 155
RGB Percent	70%, 60%, 61%
CMY	0.3020, 0.4000, 0.3922
CMYK	0.00, 0.14, 0.13, 0.30
HSL	355°, 14%, 65%
HSV	355°, 14%, 70%
XYZ	35.6678, 34.6140, 35.8116
YIQ	160.7030, 14.2580, 5.9220

Conversions

Conversions Part 2

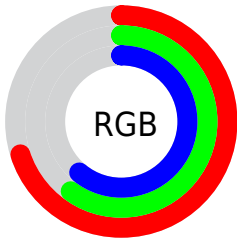
Format	Color
RYB	178, 153, 155
Decimal	11704731
CIELab	65.45, 9.58, 2.37
CIELCh	65, 9.870, 13.908
Yxy	34.6156, 0.3362, 0.3263
Android (android.graphics.Color)	4289894811 (0xFFB2999B)
YUV	160.7030, -2.8116, 15.1695
Hunter-Lab	58.8337, 5.2562, 5.0942

Details

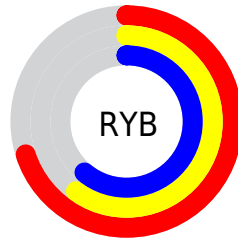
The HunterLab color **58.8337, 5.2562, 5.0942** is a light color, and the websafe version is hex **999999**. A complement of this color would be **64.6132, -11.1467, 1.9268**, and the grayscale version is **59.5859, -3.1794, 3.2374**.

A 20% lighter version of the original color is **81.6832, 5.1133, 6.6378**, and **38.5515, 5.2633, 3.7054** is the 20% darker color. If you saturate the color by 10%, you get **53.5753, 11.8115, 6.3477**, and if you desaturate by 10%, it is **64.3986, -1.0684, 4.0169**.

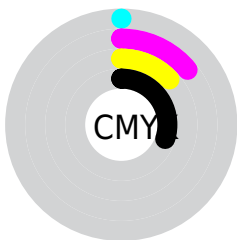
Distribution



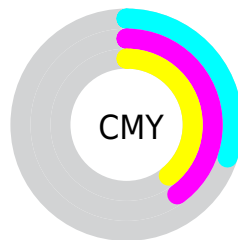
- Red (70%)
- Green (60%)
- Blue (61%)



- Red (70%)
- Yellow (60%)
- Blue (61%)



- Cyan (0%)
- Magenta (14%)
- Yellow (13%)
- Black (30%)



- Cyan (30%)
- Magenta (40%)
- Yellow (39%)

Brightness & Saturation Gradients

These gradients show how the HunterLab color 58.8337, 5.2562, 5.0942 changes by changing the brightness by 10 percent. The first figure shows a shift by +10% for each color and the second figure -10%.

Similar to the brightness gradients but the following saturation gradients show a change of the HunterLab color 58.8337, 5.2562, 5.0942 by changing the saturation by 10% instead.

■ 58.8337, 5.2562,
5.0942

■ 58.8337, 5.2562,
5.0942

179.6854, 2.4134,
12.5513

■ 48.3393, 5.3125,
4.3997

■ 81.7862, 4.9531,
6.5712

■ 38.5547, 5.2985,
3.7335

■ 94.1723, 4.7211,
7.3501

■ 29.5372, 5.2018,
3.0972

107.1273, 4.4407,
8.1553

■ 21.3586, 5.0069,
2.4907

120.6272, 4.1151,
8.9860

■ 14.1159, 4.6912,
1.9129

134.6510, 3.7473,
9.8416

■ 7.7663, 4.9605,
1.6890

149.1796, 3.3397,

0.0000, NaN, NaN

10.7214

0.0000, NaN, NaN

164.1962, 2.8945,
11.6248

0.0000, NaN, NaN

■ 58.8337, 5.2562,
5.0942

■ 58.8337, 5.2562,
5.0942

■ 53.5753, 11.8115,
6.3477

■ 64.3986, -1.0684,
4.0169

■ 48.6757, 18.5855,
7.7948

■ 70.2216, -7.1682,
3.0899

■ 44.2058, 25.5030,
9.4461

■ 76.2686, -13.0685,
2.2917

■ 40.2488, 32.3952,
11.2869

■ 82.5113, -18.7966,
1.6028

■ 36.8983, 38.9541,
13.2592

■ 88.9271, -24.3793,
1.0062

■ 34.2458, 44.7180,
15.2438

■ 93.8585, -27.5263,
-1.4920

■ 32.3581, 49.1458,
17.0629

■ 93.9176, -27.1886,
-2.3301

■ 31.2430, 51.8206,
18.5217

■ 30.8178, 52.8813,
19.1012

Harmonies

Analogous

The Analogous color harmony consists of three colors that are next to each other on the color wheel.



58.8350, 5.1668, 0.9393



58.8337, 5.2562, 5.0942



58.8350, 3.0465, 8.4901

Triad

The Triadic color harmony groups three colors that are evenly spaced from another and form a triangle on the color wheel.



58.8350, 5.2544, 5.0952



58.8350, -8.8677, 8.6850



58.8350, -5.4578, -5.0234

Complementary

The Complementary color scheme is a pair of colors which are on the opposite of each other on the color wheel.



58.8337, 5.2562, 5.0942



64.6132, -11.1467, 1.9268

Split Complementary

Split-complementary colors differ from the complementary color scheme. The scheme consists of three colors, the original color and two neighbors of the complement color.



58.8350, -9.0857, -2.6265



58.8337, 5.2562, 5.0942



58.8350, -11.0147, 5.3793

Square

The Square scheme is like the rectangle color scheme, but the four colors are evenly spaced on the color wheel.



58.8350, 5.2544, 5.0952



58.8350, -5.1524, 10.4579



58.8350, -11.0933, 1.2449



58.8350, -1.1052, -5.1135

Rectangle

The Rectangle color scheme consists of four colors that form a rectangle on the color wheel.



58.8337, 5.2562, 5.0942



58.8350, 0.6061, 9.9504



58.8350, -11.0933, 1.2449



58.8350, -6.7995, -4.4533

Sweetspot

The Sweet Spot groups the original color and five complimentary colors.



58.8350, 5.2544, 5.0952



86.7011, -1.4168, 5.4129



59.3455, 8.3785, -5.3655



40.5395, -0.3718, 2.5955



95.4677, -5.0939, 5.1869



42.2927, -2.2566, 2.2978

Same Dimension

The Same Dimension uses a secret algorithm to generate beautiful new colors.



58.8350, 5.2544, 5.0952



76.8781, 9.9121, 7.3825



61.7323, -0.2293, 9.0886



29.1820, 1.0647, 2.1692



26.0756, 44.7592, 16.0441



4.6642, 8.0833, 2.2720

Inverse Universe

The Inverse Universe completely reimagines the original color for something new.



58.8350, 5.2544, 5.0952



76.8781, 9.9121, 7.3825



61.5139, -5.7971, -2.7941



29.1820, 1.0647, 2.1692



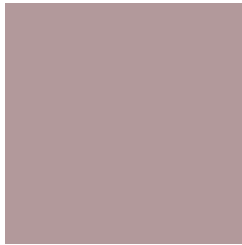
26.0756, 44.7592, 16.0441



4.6642, 8.0833, 2.2720

Previews

White Background



This preview shows how the HunterLab color 58.8337, 5.2562, 5.0942 looks on a white background.

Color Contrast Check

Large Text (above 18pt) WCAG AA × Fail

Any Text WCAG AA × Fail

Large Text (above 18pt) WCAG AAA × Fail

Any Text WCAG AAA × Fail

Black Background



This preview shows how the HunterLab color 58.8337, 5.2562, 5.0942 looks on a black background.

Color Contrast Check

Large Text (above 18pt) WCAG AA ✓ Pass

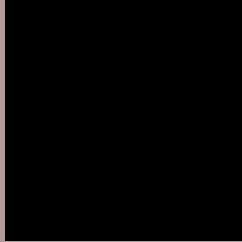
Any Text WCAG AA ✓ Pass

Large Text (above 18pt) WCAG AAA ✓ Pass

Any Text WCAG AAA ✓ Pass

If you want to check with other color combinations, try the [Color Contrast Checker](#).

HunterLab 58.8337, 5.2562, 5.0942 Background



This preview shows how black text looks on a background with the HunterLab color 58.8337, 5.2562, 5.0942.



This preview shows how white text looks on a background with the HunterLab color 58.8337, 5.2562,

Color Blindness Simulation

Color vision deficiency is a very complex topic, and I could not describe the different causes any better than Wikipedia does, so if you want to learn more, you should check out their [article about color blindness](#).

Dichromacy



Original Color

58.8337, 5.2562, 5.0942

Protanopia

58.8249, -1.9011, 3.6109

Deuteranopia

58.9134, 4.0878, 5.1651



Tritanopia

58.9241, 7.5120, 1.1002

Trichromacy



Original Color

58.8337, 5.2562, 5.0942

Protanomaly

58.7674, 0.8013, 4.0443

Deuteranomaly

59.0126, 4.4205, 5.2846

Tritanomaly

58.8331, 7.0297, 2.3957

Monochromacy



Original Color

58.8337, 5.2562, 5.0942

Achromatopsia

59.6993, -3.1854, 3.2436

Achromatomaly

59.3063, -0.1852, 3.7492

CSS Examples

Text

The CSS property to change the color of the text to HunterLab 58.8337, 5.2562, 5.0942 is called "color". The color property can be set on classes, ids or directly on the HTML element.

This example shows how text in the color `rgb(178, 153, 155)` looks like.

```
.text, #text, p{  
    color:rgb(178, 153, 155)  
}
```

If you want to add a text shadow in that color use the text-shadow property, you can generate a text shadow directly with our [CSS Text Shadow Generator](#).

Here you see how black text with a 4 pixel rgb(178, 153, 155) colored shadow looks like.

```
.shadow{ text-shadow: 4px 4px 2px rgb(178, 153, 155) }
```

Border

The CSS property to change the border of an element to HunterLab 58.8337, 5.2562, 5.0942 is called "border". The border property can be set on classes, ids or directly on the HTML element.

This example shows the color as border, it can be applied via the CSS property "border" or "border-color".

```
.border, #border, table{ border:4px solid rgb(178, 153, 155) }
```


If only the border color should be changed use the property `border-color`.

```
.border{ border-color:rgb(178, 153, 155) }
```

If you want to add a box shadow in that color use:

Here you see how a box with a 4 pixel `rgb(178, 153, 155)` colored shadow looks like.

```
.boxshadow{ -moz-box-shadow:4px 4px 4px  
4px rgb(178, 153, 155); -webkit-box-  
shadow:4px 4px 4px 4px rgb(178, 153, 155);  
box-shadow:4px 4px 4px 4px rgb(178, 153,  
155) }
```

Background

The CSS property to change the background color of an element to HunterLab 58.8337, 5.2562, 5.0942 is called "background". The background property can be set on classes, ids or directly on the HTML element.

```
.background, #background, body{  
background: rgb(178, 153, 155) }
```

If only the background color should be changed can be used:

```
.background{ background-color: rgb(178,  
153, 155) }
```

This example shows the color as background, it is applied via the CSS property "background".

To optimize and compress your CSS code, you can use our [online CSS compressor and optimizer](#) based on csstidy. If you want to create a linear or radial gradient as background or border, check our [CSS Gradient Generator](#).

Hey! You found this booklet interesting? Support Converting Colors with the new Membership Option!

The pro membership hides all ads, plus gives you double the colors in the color bucket, and more awesome pro features!

[Learn more, Memberships starting at \\$2.50/m!](#)

**Follow me
on Twitter!**

@ConvertingColor