

Converting Colors

HunterLab(58.9015, 5.6841,
25.8976)

Have a look what the booklet for
HunterLab(58.9015, 5.6841,
25.8976) contains.

HunterLab(58.8721, 5.5414, 25.9443)	3
<i>Conversions</i>	4
<i>Details</i>	6
<i>Harmonies</i>	12
<i>Previews</i>	24
<i>Color Blindness Simulation</i>	28
<i>CSS Examples</i>	31

Color

**HunterLab(58.8721, 5.5414,
25.9443)**

Conversions

Conversions Part 1

Format	Color
Hex	C4975D
RGB	196, 151, 93
RGB Percent	77%, 59%, 36%
CMY	0.2314, 0.4078, 0.6353
CMYK	0.00, 0.23, 0.53, 0.23
HSL	34°, 47%, 57%
HSV	34°, 53%, 77%
XYZ	35.8073, 34.6592, 15.1586
YIQ	157.8430, 45.4380, -8.4980

Conversions

Conversions Part 2

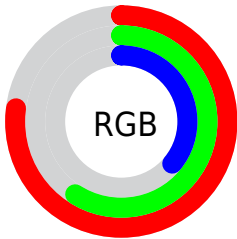
Format	Color
RYB	173, 196, 93
Decimal	12883805
CIELab	65.48, 9.90, 36.83
CIElCh	65, 38.138, 74.960
Yxy	34.6609, 0.4182, 0.4048
Android (android.graphics.Color)	4291073885 (0xFFC4975D)
YUV	157.8430, -31.9676, 33.4637
Hunter-Lab	58.8721, 5.5414, 25.9443

Details

The HunterLab color **58.8721, 5.5414, 25.9443** is a dark color, and the websafe version is hex **CC9966**. The color can be described as middle muted orange. A complement of this color would be **49.4859, -1.5957, -32.1058**, and the grayscale version is **58.5237, -3.1227, 3.1797**.

A 20% lighter version of the original color is **81.8146, 5.4142, 31.3873**, and **38.5736, 5.8239, 20.0549** is the 20% darker color. If you saturate the color by 10%, you get **56.3029, 8.3737, 28.1286**, and if you desaturate by 10%, it is **61.5718, 3.0484, 23.0628**.

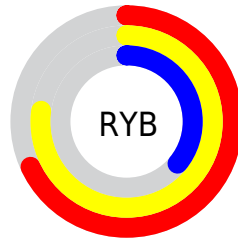
Distribution



Red (77%)

Green (59%)

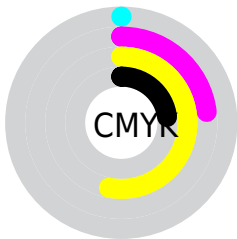
Blue (36%)



Red (68%)

Yellow (77%)

Blue (36%)

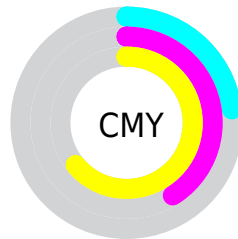


Cyan (0%)

Magenta (23%)

Yellow (53%)

Black (23%)



Cyan (23%)

Magenta (41%)

Yellow (64%)

Brightness & Saturation Gradients

These gradients show how the HunterLab color 58.8721, 5.5414, 25.9443 changes by changing the brightness by 10 percent. The first figure shows a shift by +10% for each color and the second figure -10%.

Similar to the brightness gradients but the following saturation gradients show a change of the HunterLab color 58.8721, 5.5414, 25.9443 by changing the saturation by 10% instead.

■ 58.8721, 5.5414,
25.9443

■ 58.8721, 5.5414,
25.9443

179.7412, 2.8130,
47.9705

■ 48.3754, 5.5811,
23.0977

■ 81.8292, 5.2668,
31.2843

■ 38.5882, 5.5504,
20.0895

■ 94.2173, 5.0484,
33.8212

■ 29.5678, 5.4358,
16.8747

■ 107.1743, 4.7811,
36.2909

■ 21.3861, 5.2217,
13.5929

■ 120.6761, 4.4682,
38.7051

■ 14.1398, 4.8851,
9.8979

134.7017, 4.1126,
41.0733

■ 7.7916, 5.1184,
5.4541

149.2321, 3.7168,

0.0000, NaN, NaN

43.4030

0.0000, NaN, NaN

164.2504, 3.2830,
45.7003

0.0000, NaN, NaN

■ 58.8721, 5.5414,
25.9443

■ 58.8721, 5.5414,
25.9443

■ 56.3029, 8.3737,
28.1286

■ 61.5718, 3.0484,
23.0628

■ 53.8678, 11.5521,
29.5808

■ 64.3897, 0.8946,
19.5247

■ 51.5756, 15.0610,
30.2869

■ 67.3193, -0.9356,
15.3777

■ 49.4317, 18.8690,
30.2655

■ 70.3531, -2.4588,
10.6693

■ 47.9262, 21.8357,
29.9142

■ 73.4841, -3.6934,
5.4458

■ 76.7057, -4.6584,
-0.2492

■ 80.0120, -5.3728,
-6.3754

■ 83.3973, -5.8549,
-12.8960

■ 86.3008, -9.1872,
-11.9797

Harmonies

Analogous

The Analogous color harmony consists of three colors that are next to each other on the color wheel.



58.8735, 21.6935, 21.1490



58.8721, 5.5414, 25.9443



58.8735, -11.3109, 25.9510

Triad

The Triadic color harmony groups three colors that are evenly spaced from another and form a triangle on the color wheel.



58.8735, 5.5388, 25.9450



58.8735, -31.3971, -5.3588



58.8735, 21.6566, -23.1736

Complementary

The Complementary color scheme is a pair of colors which are on the opposite of each other on the color wheel.



58.8721, 5.5414, 25.9443



49.4859, -1.5957, -32.1058

Split Complementary

Split-complementary colors differ from the complementary color scheme. The scheme consists of three colors, the original color and two neighbors of the complement color.



58.8735, 5.4928, -35.2267



58.8721, 5.5414, 25.9443



58.8735, -24.4445, -23.1305

Square

The Square scheme is like the rectangle color scheme, but the four colors are evenly spaced on the color wheel.



58.8735, 5.5388, 25.9450



58.8735, -31.3878, 10.6839



58.8735, -11.3520, -35.2091



58.8735, 31.6893, -5.4062

Rectangle

The Rectangle color scheme consists of four colors that form a rectangle on the color wheel.



58.8721, 5.5414, 25.9443



58.8735, -20.6530, 23.3466



58.8735, -11.3520, -35.2091



58.8735, 16.6841, -28.2245

Sweetspot

The Sweet Spot groups the original color and five complimentary colors.



58.8735, 5.5388, 25.9450



93.1643, -2.5972, 16.7898



46.3023, 39.8869, -2.2203



42.7067, -1.0044, 8.3828

0.0000, NaN, NaN



46.2646, -2.4686, 2.5136

Same Dimension

The Same Dimension uses a secret algorithm to generate beautiful new colors.



58.8735, 5.5388, 25.9450



75.2976, 11.8577, 38.2022



71.6428, -17.8312, 35.2631



33.1630, -1.3401, 4.2102



38.6428, 17.0153, 24.1094



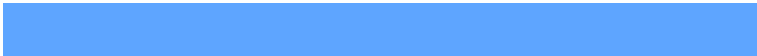
8.8341, 1.9033, 5.4769

Inverse Universe

The Inverse Universe completely reimagines the original color for something new.



49.4859, -1.5957, -32.1058



60.2985, 1.2620, -55.8476



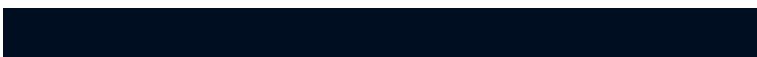
37.9732, 22.5387, -57.7477



32.3353, -2.0342, -0.8026



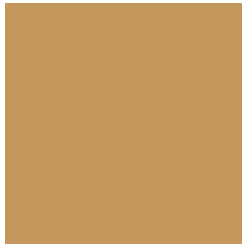
26.3888, 12.0163, -58.9234



6.6169, 0.2958, -8.9091

Previews

White Background



This preview shows how the HunterLab color 58.8721, 5.5414, 25.9443 looks on a white background.

Color Contrast Check

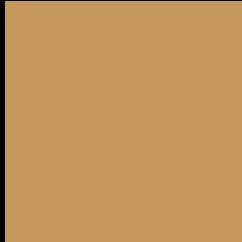
Large Text (above 18pt) WCAG AA × Fail

Any Text WCAG AA × Fail

Large Text (above 18pt) WCAG AAA × Fail

Any Text WCAG AAA × Fail

Black Background



This preview shows how the HunterLab color 58.8721, 5.5414, 25.9443 looks on a black background.

Color Contrast Check

Large Text (above 18pt) WCAG AA ✓ Pass

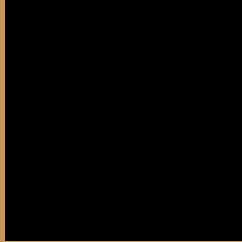
Any Text WCAG AA ✓ Pass

Large Text (above 18pt) WCAG AAA ✓ Pass

Any Text WCAG AAA ✓ Pass

If you want to check with other color combinations, try the [Color Contrast Checker](#).

HunterLab 58.8721, 5.5414, 25.9443 Background



This preview shows how black text looks on a background with the HunterLab color 58.8721, 5.5414, 25.9443.



This preview shows how white text looks on a background with the HunterLab color 58.8721, 5.5414,

Color Blindness Simulation

Color vision deficiency is a very complex topic, and I could not describe the different causes any better than Wikipedia does, so if you want to learn more, you should check out their [article about color blindness](#).

Dichromacy



Original Color

58.8721, 5.5414, 25.9443

Protanopia

58.8553, -6.0513, 25.0124

Deuteranopia

58.9204, 4.2920, 25.9607



Tritanopia

58.9327, 17.9536, 5.4300

Trichromacy



Original Color

58.8721, 5.5414, 25.9443

Protanomaly

58.7778, -1.8992, 25.2645

Deuteranomaly

59.0329, 4.6690, 26.0565

Tritanomaly

58.8859, 12.5986, 14.5262

Monochromacy



Original Color

58.8721, 5.5414, 25.9443

Achromatopsia

58.4734, -3.1200, 3.1770

Achromatomaly

58.2534, -0.7094, 12.9274

CSS Examples

Text

The CSS property to change the color of the text to HunterLab 58.8721, 5.5414, 25.9443 is called "color". The color property can be set on classes, ids or directly on the HTML element.

This example shows how text in the color `rgb(196, 151, 93)` looks like.

```
.text, #text, p{  
    color:rgb(196, 151, 93)  
}
```

If you want to add a text shadow in that color use the text-shadow property, you can generate a text shadow directly with our [CSS Text Shadow Generator](#).

Here you see how black text with a 4 pixel rgb(196, 151, 93) colored shadow looks like.

```
.shadow{ text-shadow: 4px 4px 2px rgb(196, 151, 93) }
```

Border

The CSS property to change the border of an element to HunterLab 58.8721, 5.5414, 25.9443 is called "border". The border property can be set on classes, ids or directly on the HTML element.

This example shows the color as border, it can be applied via the CSS property "border" or "border-color".

```
.border, #border, table{ border:4px solid rgb(196, 151, 93) }
```


If only the border color should be changed use the property `border-color`.

```
.border{ border-color:rgb(196, 151, 93) }
```

If you want to add a box shadow in that color use:

Here you see how a box with a 4 pixel `rgb(196, 151, 93)` colored shadow looks like.

```
.boxshadow{ -moz-box-shadow:4px 4px 4px  
4px rgb(196, 151, 93); -webkit-box-  
shadow:4px 4px 4px 4px rgb(196, 151, 93);  
box-shadow:4px 4px 4px 4px rgb(196, 151,  
93) }
```

Background

The CSS property to change the background color of an element to HunterLab 58.8721, 5.5414, 25.9443 is called "background". The background property can be set on classes, ids or directly on the HTML element.

```
.background, #background, body{  
background: rgb(196, 151, 93) }
```

If only the background color should be changed can be used:

```
.background{ background-color: rgb(196,  
151, 93) }
```

This example shows the color as background, it is applied via the CSS property "background".

To optimize and compress your CSS code, you can use our [online CSS compressor and optimizer](#) based on csstidy. If you want to create a linear or radial gradient as background or border, check our [CSS Gradient Generator](#).

Hey! You found this booklet interesting? Support Converting Colors with the new Membership Option!

The pro membership hides all ads, plus gives you double the colors in the color bucket, and more awesome pro features!

[Learn more, Memberships starting at \\$2.50/m!](#)

**Follow me
on Twitter!**

@ConvertingColor