

Converting Colors

HunterLab(58.9066, 4.7502,
17.2497)

Have a look what the booklet for
HunterLab(58.9066, 4.7502,
17.2497) contains.

HunterLab(58.8244, 5.1003, 17.1169)	3
<i>Conversions</i>	4
<i>Details</i>	6
<i>Harmonies</i>	12
<i>Previews</i>	24
<i>Color Blindness Simulation</i>	28
<i>CSS Examples</i>	31

Color

**HunterLab(58.8244, 5.1003,
17.1169)**

Conversions

Conversions Part 1

Format	Color
Hex	BC987C
RGB	188, 152, 124
RGB Percent	74%, 60%, 49%
CMY	0.2627, 0.4039, 0.5137
CMYK	0.00, 0.19, 0.34, 0.26
HSL	26°, 32%, 61%
HSV	26°, 34%, 74%
XYZ	35.6054, 34.6031, 23.8712
YIQ	159.5720, 30.4440, -1.0760

Conversions

Conversions Part 2

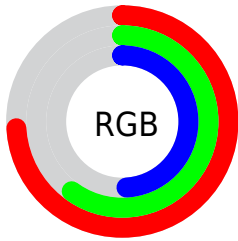
Format	Color
R _Y B	188, 174, 124
Decimal	12359804
CIE Lab	65.44, 9.41, 19.82
CIE LCh	65, 21.935, 64.606
Yxy	34.6047, 0.3785, 0.3678
Android (android.graphics.Color)	4290549884 (0xFFBC987C)
YUV	159.5720, -17.5370, 24.9314
Hunter-Lab	58.8244, 5.1003, 17.1169

Details

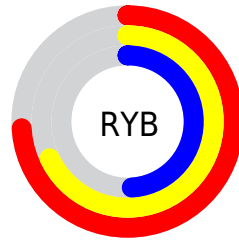
The HunterLab color **58.8244, 5.1003, 17.1169** is a light color, and the websafe version is hex **CC9966**. A complement of this color would be **57.4948, -7.6020, -13.7677**, and the grayscale version is **59.1770, -3.1575, 3.2152**.

A 20% lighter version of the original color is **81.6881, 4.8998, 20.2316**, and **38.4732, 5.0334, 13.5368** is the 20% darker color. If you saturate the color by 10%, you get **55.5811, 8.3531, 20.0807**, and if you desaturate by 10%, it is **62.2202, 2.1517, 13.6898**.

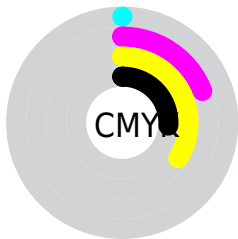
Distribution



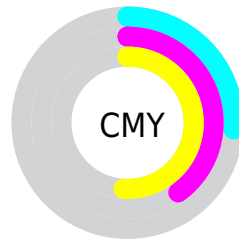
- Red (74%)
- Green (60%)
- Blue (49%)



- Red (74%)
- Yellow (68%)
- Blue (49%)



- Cyan (0%)
- Magenta (19%)
- Yellow (34%)
- Black (26%)



- Cyan (26%)
- Magenta (40%)
- Yellow (51%)

Brightness & Saturation Gradients

These gradients show how the HunterLab color 58.8244, 5.1003, 17.1169 changes by changing the brightness by 10 percent. The first figure shows a shift by +10% for each color and the second figure -10%.

Similar to the brightness gradients but the following saturation gradients show a change of the HunterLab color 58.8244, 5.1003, 17.1169 by changing the saturation by 10% instead.

■ 58.8244, 5.1003,
17.1169

■ 58.8244, 5.1003,
17.1169

179.6720, 2.1931,
31.5786

■ 48.3307, 5.1649,
15.3966

■ 81.7759, 4.7805,
20.4389

■ 38.5467, 5.1603,
13.6136

■ 94.1615, 4.5410,
22.0600

■ 29.5299, 5.0735,
11.7430

■ 107.1160, 4.2532,
23.6644

■ 21.3520, 4.8894,
9.7443

120.6155, 3.9206,
25.2571

■ 14.1101, 4.5854,
7.8781

134.6388, 3.5461,
26.8420

■ 7.7602, 4.8674,
5.4322

149.1670, 3.1319,

0.0000, NaN, NaN

28.4223

0.0000, NaN, NaN

164.1832, 2.6803,
30.0005

0.0000, NaN, NaN

■ 58.8244, 5.1003,
17.1169

■ 58.8244, 5.1003,
17.1169

■ 55.5811, 8.3531,
20.0807

■ 62.2202, 2.1517,
13.6898

■ 52.5015, 11.9289,
22.5215

■ 65.7507, -0.5042,
9.8501

■ 49.6035, 15.8275,
24.3818

■ 69.4049, -2.8907,
5.6459

■ 46.9050, 20.0347,
25.6081

■ 73.1721, -5.0297,
1.1191

■ 44.4236, 24.5129,
26.1633

■ 77.0427, -6.9428,
-3.6944

■ 42.1759, 29.1917,
26.0459

■ 81.0083, -8.6508,
-8.7636

■ 40.9458, 31.9954,
25.7907

■ 85.0388, -10.2992,
-13.7414

■ 88.4567, -15.6497,
-9.1803

■ 91.9438, -20.9231,
-4.7188

Harmonies

Analogous

The Analogous color harmony consists of three colors that are next to each other on the color wheel.



58.8258, 13.0626, 12.4396



58.8244, 5.1003, 17.1169



58.8258, -4.6369, 18.3230

Triad

The Triadic color harmony groups three colors that are evenly spaced from another and form a triangle on the color wheel.



58.8258, 5.0981, 17.1177



58.8258, -20.6532, 1.7547



58.8258, 7.8651, -13.4108

Complementary

The Complementary color scheme is a pair of colors which are on the opposite of each other on the color wheel.



58.8244, 5.1003, 17.1169



57.4948, -7.6020, -13.7677

Split Complementary

Split-complementary colors differ from the complementary color scheme. The scheme consists of three colors, the original color and two neighbors of the complement color.



58.8258, -1.6319, -17.4436



58.8244, 5.1003, 17.1169



58.8258, -17.7625, -7.8290

Square

The Square scheme is like the rectangle color scheme, but the four colors are evenly spaced on the color wheel.



58.8258, 5.0981, 17.1177



58.8258, -19.1073, 10.3343



58.8258, -10.9520, -15.2516



58.8258, 14.7315, -4.9528

Rectangle

The Rectangle color scheme consists of four colors that form a rectangle on the color wheel.



58.8244, 5.1003, 17.1169



58.8258, -10.7311, 17.1939



58.8258, -10.9520, -15.2516



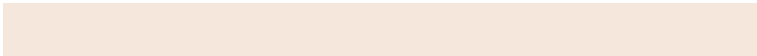
58.8258, 4.8526, -15.3862

Sweetspot

The Sweet Spot groups the original color and five complimentary colors.



58.8258, 5.0981, 17.1177



90.4048, -1.9662, 11.1205



52.5875, 24.4504, -4.8027



41.6046, -0.6983, 5.5205



97.7295, -5.2146, 5.3098



44.2712, -2.3622, 2.4053

Same Dimension

The Same Dimension uses a secret algorithm to generate beautiful new colors.



58.8258, 5.0981, 17.1177



75.8414, 10.1678, 26.1483



68.0567, -10.3507, 25.1422



31.9449, -0.7838, 3.7522



33.9963, 25.8773, 21.4014



7.6357, 3.0495, 4.7585

Inverse Universe

The Inverse Universe completely reimagines the original color for something new.



57.4948, -7.6020, -13.7677



73.6663, -10.4575, -24.1890



48.3987, 8.0349, -28.3197



31.7672, -2.4951, -0.3874



30.9899, 1.9041, -42.8451



7.1014, -1.2214, -6.2394

Previews

White Background



This preview shows how the HunterLab color 58.8244, 5.1003, 17.1169 looks on a white background.

Color Contrast Check

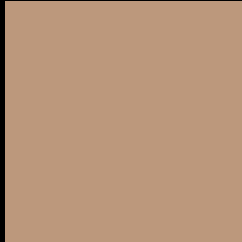
Large Text (above 18pt) WCAG AA × Fail

Any Text WCAG AA × Fail

Large Text (above 18pt) WCAG AAA × Fail

Any Text WCAG AAA × Fail

Black Background



This preview shows how the HunterLab color 58.8244, 5.1003, 17.1169 looks on a black background.

Color Contrast Check

Large Text (above 18pt) WCAG AA ✓ Pass

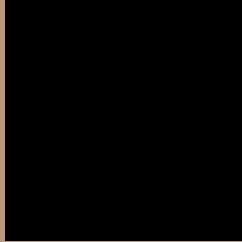
Any Text WCAG AA ✓ Pass

Large Text (above 18pt) WCAG AAA ✓ Pass

Any Text WCAG AAA ✓ Pass

If you want to check with other color combinations, try the [Color Contrast Checker](#).

HunterLab 58.8244, 5.1003, 17.1169 Background



This preview shows how black text looks on a background with the HunterLab color 58.8244, 5.1003, 17.1169.



This preview shows how white text looks on a background with the HunterLab color 58.8244, 5.1003,

Color Blindness Simulation

Color vision deficiency is a very complex topic, and I could not describe the different causes any better than Wikipedia does, so if you want to learn more, you should check out their [article about color blindness](#).

Dichromacy



Original Color

58.8244, 5.1003, 17.1169

Protanopia

58.9607, -4.5135, 16.0614

Deuteranopia

58.8870, 3.8865, 17.1547



Tritanopia

58.8023, 13.7538, 3.4016

Trichromacy



Original Color

58.8244, 5.1003, 17.1169

Protanomaly

58.7481, -0.8441, 16.2648

Deuteranomaly

58.9936, 4.2444, 17.2613

Tritanomaly

58.8613, 10.4756, 9.0613

Monochromacy



Original Color

58.8244, 5.1003, 17.1169

Achromatopsia

59.2902, -3.1636, 3.2213

Achromatomaly

58.9632, -0.5567, 8.5663

CSS Examples

Text

The CSS property to change the color of the text to HunterLab 58.8244, 5.1003, 17.1169 is called "color". The color property can be set on classes, ids or directly on the HTML element.

This example shows how text in the color `rgb(188, 152, 124)` looks like.

```
.text, #text, p{  
    color:rgb(188, 152, 124)  
}
```

If you want to add a text shadow in that color use the text-shadow property, you can generate a text shadow directly with our [CSS Text Shadow Generator](#).

Here you see how black text with a 4 pixel rgb(188, 152, 124) colored shadow looks like.

```
.shadow{ text-shadow: 4px 4px 2px rgb(188, 152, 124) }
```

Border

The CSS property to change the border of an element to HunterLab 58.8244, 5.1003, 17.1169 is called "border". The border property can be set on classes, ids or directly on the HTML element.

This example shows the color as border, it can be applied via the CSS property "border" or "border-color".

```
.border, #border, table{ border:4px solid rgb(188, 152, 124) }
```


If only the border color should be changed use the property `border-color`.

```
.border{ border-color:rgb(188, 152, 124) }
```

If you want to add a box shadow in that color use:

Here you see how a box with a 4 pixel `rgb(188, 152, 124)` colored shadow looks like.

```
.boxshadow{ -moz-box-shadow:4px 4px 4px  
4px rgb(188, 152, 124); -webkit-box-  
shadow:4px 4px 4px 4px rgb(188, 152, 124);  
box-shadow:4px 4px 4px 4px rgb(188, 152,  
124) }
```

Background

The CSS property to change the background color of an element to HunterLab 58.8244, 5.1003, 17.1169 is called "background". The background property can be set on classes, ids or directly on the HTML element.

```
.background, #background, body{  
background: rgb(188, 152, 124) }
```

If only the background color should be changed can be used:

```
.background{ background-color: rgb(188,  
152, 124) }
```

This example shows the color as background, it is applied via the CSS property "background".

To optimize and compress your CSS code, you can use our [online CSS compressor and optimizer](#) based on csstidy. If you want to create a linear or radial gradient as background or border, check our [CSS Gradient Generator](#).

Hey! You found this booklet interesting? Support Converting Colors with the new Membership Option!

The pro membership hides all ads, plus gives you double the colors in the color bucket, and more awesome pro features!

[Learn more, Memberships starting at \\$2.50/m!](#)

**Follow me
on Twitter!**

@ConvertingColor