

# Converting Colors

HunterLab(59.0324, 13.4668,  
8.7773)

Have a look what the booklet for  
HunterLab(59.0324, 13.4668,  
8.7773) contains.

<b>HunterLab(58.9150, 13.4399, 8.7590)</b> .....	3
<b><i>Conversions</i></b> .....	4
<b><i>Details</i></b> .....	6
<b><i>Harmonies</i></b> .....	12
<b><i>Previews</i></b> .....	24
<b><i>Color Blindness Simulation</i></b> .....	28
<b><i>CSS Examples</i></b> .....	31

# Color

**HunterLab(58.9150, 13.4399,  
8.7590)**

# Conversions

## Conversions Part 1

Format	Color
Hex	C49393
RGB	196, 147, 147
RGB Percent	77%, 58%, 58%
CMY	0.2314, 0.4235, 0.4235
CMYK	0.00, 0.25, 0.25, 0.23
HSL	0°, 29%, 67%
HSV	0°, 25%, 77%
XYZ	38.4651, 34.7098, 32.2761
YIQ	161.6510, 29.2040, 10.3880

# Conversions

## Conversions Part 2

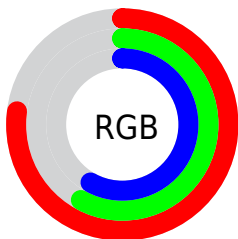
Format	Color
R <sub>Y</sub> B	196, 147, 147
Decimal	12882835
CIE Lab	65.52, 18.45, 7.20
CIE LCh	66, 19.805, 21.328
Yxy	34.7114, 0.3648, 0.3292
Android (android.graphics.Color)	4291072915 (0xFFC49393)
YUV	161.6510, -7.2229, 30.1241
Hunter-Lab	58.9150, 13.4399, 8.7590

# Details

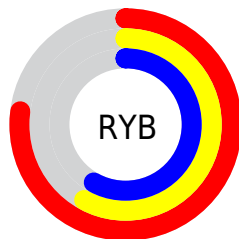
The HunterLab color **58.9150, 13.4399, 8.7590** is a light color, and the websafe version is hex **CC9999**. A complement of this color would be **70.4747, -17.6216, -0.8186**, and the grayscale version is **59.9872, -3.2008, 3.2592**.

A 20% lighter version of the original color is **81.7759, 13.9165, 10.5696**, and **38.5895, 12.6071, 6.6236** is the 20% darker color. If you saturate the color by 10%, you get **53.4439, 20.9130, 10.8707**, and if you desaturate by 10%, it is **64.8100, 6.2509, 6.7763**.

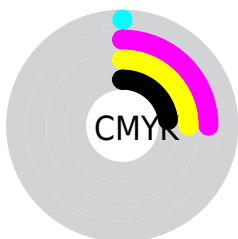
# Distribution



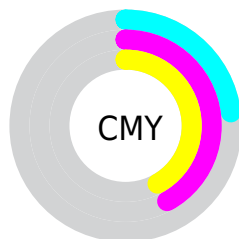
- Red (77%)
- Green (58%)
- Blue (58%)



- Red (77%)
- Yellow (58%)
- Blue (58%)



- Cyan (0%)
- Magenta (25%)
- Yellow (25%)
- Black (23%)




- Cyan (23%)
- Magenta (42%)
- Yellow (42%)


# Brightness & Saturation Gradients

These gradients show how the HunterLab color 58.9150, 13.4399, 8.7590 changes by changing the brightness by 10 percent. The first figure shows a shift by +10% for each color and the second figure -10%.


Similar to the brightness gradients but the following saturation gradients show a change of the HunterLab color 58.9150, 13.4399, 8.7590 by changing the saturation by 10% instead.





 58.9150, 13.4399,  
8.7590


 58.9150, 13.4399,  
8.7590


179.8034, 13.8071,  
18.0642

 48.4155, 13.0604,  
7.7989


 81.8770, 13.9467,  
10.7175

 38.6254, 12.5871,  
6.8452


 94.2674, 14.0945,  
11.7176

 29.6019, 12.0033,  
5.8933


107.2266, 14.1794,  
12.7334

 21.4166, 11.2899,  
4.9333

120.7306, 14.2062,  
13.7656

 14.1665, 10.4225,  
3.9467

134.7582, 14.1791,  
14.8146

 7.8196, 10.1962,  
4.2441

149.2906, 14.1016,

0.0000, NaN, NaN

15.8806

0.0000, NaN, NaN

164.3107, 13.9767,  
16.9638

0.0000, NaN, NaN

■ 58.9150, 13.4399,  
8.7590

■ 58.9150, 13.4399,  
8.7590

■ 53.4439, 20.9130,  
10.8707

■ 64.8100, 6.2509,  
6.7763

■ 48.4757, 28.5941,  
13.0866

■ 71.0580, -0.6320,  
4.9200

■ 44.1108, 36.2808,  
15.3477

■ 77.6073, -7.2296,  
3.1810

■ 40.4587, 43.6029,  
17.5379

■ 84.4158, -13.5741,  
1.5454

■ 37.6234, 50.0085,  
19.4796

■ 91.4503, -19.7014,  
-0.0010

■ 35.6731, 54.8675,  
20.9667

■ 95.1188, -22.7571,  
-0.7581

■ 34.5982, 57.7298,  
21.8476

■ 34.2581, 58.6654,  
22.1367

# Harmonies

## Analogous

The Analogous color harmony consists of three colors that are next to each other on the color wheel.



58.9164, 14.5092, 0.7311



58.9150, 13.4399, 8.7590



58.9164, 7.7902, 14.4291

# Triad

The Triadic color harmony groups three colors that are evenly spaced from another and form a triangle on the color wheel.



58.9164, 13.4377, 8.7600



58.9164, -15.7699, 12.3945



58.9164, -5.6734, -15.0033

# Complementary

The Complementary color scheme is a pair of colors which are on the opposite of each other on the color wheel.



58.9150, 13.4399, 8.7590



70.4747, -17.6216, -0.8186

# Split Complementary

Split-complementary colors differ from the complementary color scheme. The scheme consists of three colors, the original color and two neighbors of the complement color.



58.9164, -13.3399, -10.7768



58.9150, 13.4399, 8.7590



58.9164, -18.9409, 5.5798

# Square

The Square scheme is like the rectangle color scheme, but the four colors are evenly spaced on the color wheel.



58.9164, 13.4377, 8.7600



58.9164, -9.1687, 16.3036



58.9164, -18.0781, -2.9454



58.9164, 3.1272, -13.8210



# Rectangle

The Rectangle color scheme consists of four colors that form a rectangle on the color wheel.



58.9150, 13.4399, 8.7590



58.9164, 2.3621, 16.4955



58.9164, -18.0781, -2.9454



58.9164, -8.4605, -14.1479

# Sweetspot

The Sweet Spot groups the original color and five complimentary colors.



58.9164, 13.4377, 8.7600



93.8293, 1.0711, 7.1356



60.4889, 21.5157, -13.5400



43.1680, 0.7553, 3.3709

0.0000, NaN, NaN



46.2646, -2.4686, 2.5136



# Same Dimension

The Same Dimension uses a secret algorithm to generate beautiful new colors.



58.9164, 13.4377, 8.7600



75.1911, 23.5472, 13.3245



65.6946, 1.0263, 15.5856



31.7459, 1.0845, 2.6563



27.4609, 47.0251, 17.7446



5.7085, 9.7734, 3.6887



# Inverse Universe

The Inverse Universe completely reimagines the original color for something new.



70.4747, -17.6216, -0.8186



93.9470, -27.0688, -2.2912



62.8522, -5.8933, -10.6388



33.8058, -4.4128, 0.9620



52.8432, -28.0121, -5.5792

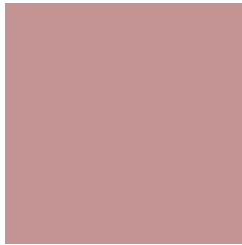


10.9843, -5.8229, -1.1594



# Previews

## White Background



This preview shows how the HunterLab color 58.9150, 13.4399, 8.7590 looks on a white background.

## Color Contrast Check

Large Text (above 18pt) WCAG AA × Fail

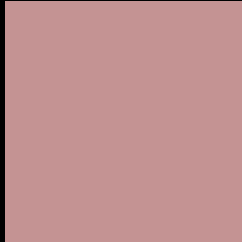
Any Text WCAG AA × Fail

Large Text (above 18pt) WCAG AAA × Fail

Any Text WCAG AAA × Fail



# Black Background



This preview shows how the HunterLab color 58.9150, 13.4399, 8.7590 looks on a black background.

## Color Contrast Check

Large Text (above 18pt) WCAG AA ✓ Pass

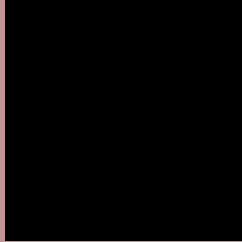
Any Text WCAG AA ✓ Pass

Large Text (above 18pt) WCAG AAA ✓ Pass

Any Text WCAG AAA ✓ Pass

If you want to check with other color combinations, try the [Color Contrast Checker](#).

## HunterLab 58.9150, 13.4399, 8.7590 Background



This preview shows how black text looks on a background with the HunterLab color 58.9150, 13.4399, 8.7590.



This preview shows how white text looks on a background with the HunterLab color 58.9150, 13.4399, 8.7590.

8.7590.

# Color Blindness Simulation

Color vision deficiency is a very complex topic, and I could not describe the different causes any better than Wikipedia does, so if you want to learn more, you should check out their [article about color blindness](#).

## Dichromacy



### Original Color

58.9150, 13.4399, 8.7590

### Protanopia

59.1512, -2.5496, 6.1964

### Deuteranopia

59.0676, 4.1116, 9.1726



## Tritanopia

59.0444, 15.7561, 4.6277

# Trichromacy



## Original Color

58.9150, 13.4399, 8.7590

## Protanomaly

59.0823, 2.9881, 7.0774

## Deuteranomaly

58.8622, 7.6915, 9.0135

## Tritanomaly

58.9305, 15.1679, 6.2574

# Monochromacy



## Original Color

58.9150, 13.4399, 8.7590

## Achromatopsia

60.1088, -3.2073, 3.2658

## Achromatomaly

59.6212, 2.2406, 5.0565

# CSS Examples

## Text

The CSS property to change the color of the text to HunterLab 58.9150, 13.4399, 8.7590 is called "color". The color property can be set on classes, ids or directly on the HTML element.

This example shows how text in the color `rgb(196, 147, 147)` looks like.

```
.text, #text, p{  
    color:rgb(196, 147, 147)  
}
```

If you want to add a text shadow in that color use the text-shadow property, you can generate a text shadow directly with our [CSS Text Shadow Generator](#).

Here you see how black text with a 4 pixel rgb(196, 147, 147) colored shadow looks like.

```
.shadow{ text-shadow: 4px 4px 2px rgb(196, 147, 147) }
```

## Border

The CSS property to change the border of an element to HunterLab 58.9150, 13.4399, 8.7590 is called "border". The border property can be set on classes, ids or directly on the HTML element.

This example shows the color as border, it can be applied via the CSS property "border" or "border-color".

```
.border, #border, table{ border:4px solid rgb(196, 147, 147) }
```



If only the border color should be changed use the property `border-color`.

```
.border{ border-color:rgb(196, 147, 147) }
```

If you want to add a box shadow in that color use:

Here you see how a box with a 4 pixel `rgb(196, 147, 147)` colored shadow looks like.

```
.boxshadow{ -moz-box-shadow:4px 4px 4px  
4px rgb(196, 147, 147); -webkit-box-  
shadow:4px 4px 4px 4px rgb(196, 147, 147);  
box-shadow:4px 4px 4px 4px rgb(196, 147,  
147) }
```

# Background

The CSS property to change the background color of an element to HunterLab 58.9150, 13.4399, 8.7590 is called "background". The background property can be set on classes, ids or directly on the HTML element.

```
.background, #background, body{  
background: rgb(196, 147, 147) }
```

If only the background color should be changed can be used:

```
.background{ background-color: rgb(196,  
147, 147) }
```

This example shows the color as background, it is applied via the CSS property "background".

To optimize and compress your CSS code, you can use our [online CSS compressor and optimizer](#) based on csstidy. If you want to create a linear or radial gradient as background or border, check our [CSS Gradient Generator](#).

Hey! You found this booklet interesting? Support Converting Colors with the new Membership Option!

The pro membership hides all ads, plus gives you double the colors in the color bucket, and more awesome pro features!

**[Learn more, Memberships starting at \\$2.50/m!](#)**

**Follow me  
on Twitter!**

@ConvertingColor