

Converting Colors

HunterLab(59.0326, 3.2325,
22.2895)

Have a look what the booklet for
HunterLab(59.0326, 3.2325,
22.2895) contains.

HunterLab(58.8931, 3.2745, 22.0640)	3
<i>Conversions</i>	4
<i>Details</i>	6
<i>Harmonies</i>	12
<i>Previews</i>	24
<i>Color Blindness Simulation</i>	28
<i>CSS Examples</i>	31

Color

**HunterLab(58.8931, 3.2745,
22.0640)**

Conversions

Conversions Part 1

Format	Color
Hex	BD996C
RGB	189, 153, 108
RGB Percent	74%, 60%, 42%
CMY	0.2588, 0.4000, 0.5765
CMYK	0.00, 0.19, 0.43, 0.26
HSL	33°, 38%, 58%
HSV	33°, 43%, 74%
XYZ	35.0843, 34.6840, 19.0329
YIQ	158.6340, 35.9010, -6.3630

Conversions

Conversions Part 2

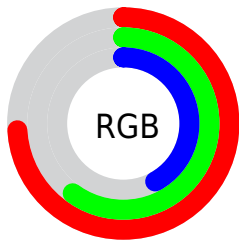
Format	Color
R_{YB}	173, 189, 108
Decimal	12425580
CIE Lab	65.50, 7.37, 28.69
CIE LCh	66, 29.625, 75.603
Yxy	34.6856, 0.3951, 0.3906
Android (android.graphics.Color)	4290615660 (0xFFBD996C)
YUV	158.6340, -24.9626, 26.6310
Hunter-Lab	58.8931, 3.2745, 22.0640

Details

The HunterLab color $58.8931, 3.2745, 22.0640$ is a dark color, and the websafe version is hex $CC9966$. A complement of this color would be $51.7763, -3.2394, -23.2831$, and the grayscale version is $58.8216, -3.1386, 3.1959$.

A 20% lighter version of the original color is $81.8156, 3.0335, 26.3663$, and $38.5970, 3.6687, 17.2807$ is the 20% darker color. If you saturate the color by 10%, you get $56.2782, 5.7334, 24.7982$, and if you desaturate by 10%, it is $61.6277, 1.1330, 18.7098$.

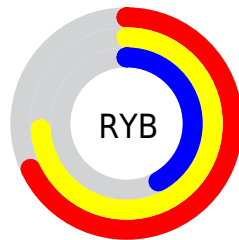
Distribution



Red (74%)

Green (60%)

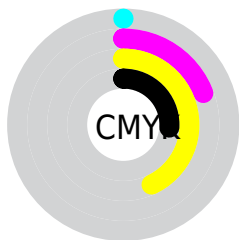
Blue (42%)



Red (68%)

Yellow (74%)

Blue (42%)

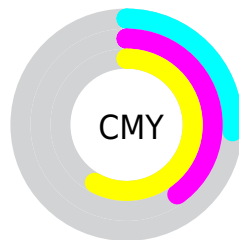


Cyan (0%)

Magenta (19%)

Yellow (43%)

Black (26%)



Cyan (26%)

Magenta (40%)

Yellow (58%)

Brightness & Saturation Gradients

These gradients show how the HunterLab color 58.8931, 3.2745, 22.0640 changes by changing the brightness by 10 percent. The first figure shows a shift by +10% for each color and the second figure -10%.

Similar to the brightness gradients but the following saturation gradients show a change of the HunterLab color 58.8931, 3.2745, 22.0640 by changing the saturation by 10% instead.

■ 58.8931, 3.2745,
22.0640

■ 58.8931, 3.2745,
22.0640

179.7716, -0.3935,
40.3993

■ 48.3950, 3.4439,
19.7661

■ 81.8526, 2.7609,
26.4189

■ 38.6064, 3.5508,
17.3530

■ 94.2418, 2.4310,
28.5086

■ 29.5845, 3.5837,
14.7868

■ 107.1999, 2.0567,
30.5558

■ 21.4010, 3.5292,
12.0115

■ 120.7028, 1.6408,
32.5690

■ 14.1529, 3.3674,
9.9070

134.7294, 1.1858,
34.5551

■ 7.8053, 3.6953,
5.4637

149.2607, 0.6939,

0.0000, NaN, NaN

36.5194

0.0000, NaN, NaN

164.2799, 0.1670,
38.4662

0.0000, NaN, NaN

■ 58.8931, 3.2745,
22.0640

■ 58.8931, 3.2745,
22.0640

■ 56.2782, 5.7334,
24.7982

■ 61.6277, 1.1330,
18.7098

■ 53.7868, 8.5239,
26.8684

■ 64.4698, -0.6968,
14.7789

■ 51.4284, 11.6427,
28.2427

■ 67.4135, -2.2333,
10.3181

■ 49.2102, 15.0764,
28.9060

■ 70.4516, -3.4942,
5.3718

■ 47.1383, 18.7941,
28.8749

■ 73.5779, -4.4979,
-0.0182

■ 45.7427, 21.5605,
28.5639

■ 76.7862, -5.2627,
-5.8134

■ 80.0712, -5.8064,
-11.9788

■ 83.2638, -7.0490,
-16.1844

■ 85.9384, -11.3451,
-12.5149

Harmonies

Analogous

The Analogous color harmony consists of three colors that are next to each other on the color wheel.



58.8945, 15.6035, 17.9291



58.8931, 3.2745, 22.0640



58.8945, -9.7917, 21.9816

Triad

The Triadic color harmony groups three colors that are evenly spaced from another and form a triangle on the color wheel.



58.8945, 3.2722, 22.0647



58.8945, -25.5683, -3.6357



58.8945, 16.0260, -16.2211

Complementary

The Complementary color scheme is a pair of colors which are on the opposite of each other on the color wheel.



58.8931, 3.2745, 22.0640



51.7763, -3.2394, -23.2831

Split Complementary

Split-complementary colors differ from the complementary color scheme. The scheme consists of three colors, the original color and two neighbors of the complement color.



58.8945, 3.8089, -24.9755



58.8931, 3.2745, 22.0640



58.8945, -19.8080, -16.6937

Square

The Square scheme is like the rectangle color scheme, but the four colors are evenly spaced on the color wheel.



58.8945, 3.2722, 22.0647



58.8945, -25.6845, 8.8767



58.8945, -9.2998, -25.1653



58.8945, 23.3931, -3.0919

Rectangle

The Rectangle color scheme consists of four colors that form a rectangle on the color wheel.



58.8931, 3.2745, 22.0640



58.8945, -17.1511, 19.5973



58.8945, -9.2998, -25.1653



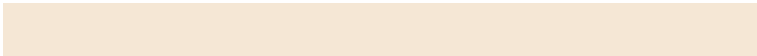
58.8945, 12.3048, -19.8884

Sweetspot

The Sweet Spot groups the original color and five complimentary colors.



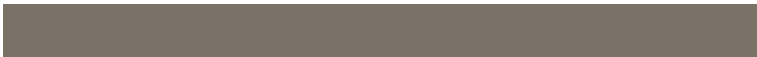
58.8945, 3.2722, 22.0647



90.0776, -2.9229, 14.0299



48.5507, 30.5451, -1.9916



41.3628, -1.1582, 7.1431



97.7295, -5.2146, 5.3098



44.2712, -2.3622, 2.4053

Same Dimension

The Same Dimension uses a secret algorithm to generate beautiful new colors.



58.8945, 3.2722, 22.0647



75.6729, 7.3098, 32.8469



69.1274, -15.3615, 30.1583



32.2360, -1.2738, 4.0669



37.7263, 17.2382, 23.5485



8.2830, 1.7444, 5.1345

Inverse Universe

The Inverse Universe completely reimagines the original color for something new.



51.7763, -3.2394, -23.2831



64.3420, -2.7264, -39.8564



42.2465, 15.7977, -41.2580



31.4714, -2.0089, -0.7484



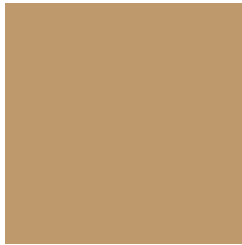
26.2389, 11.1346, -56.8327



6.3263, 0.0397, -7.9929

Previews

White Background



This preview shows how the HunterLab color 58.8931, 3.2745, 22.0640 looks on a white background.

Color Contrast Check

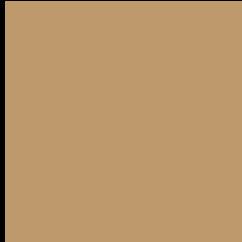
Large Text (above 18pt) WCAG AA × Fail

Any Text WCAG AA × Fail

Large Text (above 18pt) WCAG AAA × Fail

Any Text WCAG AAA × Fail

Black Background



This preview shows how the HunterLab color 58.8931, 3.2745, 22.0640 looks on a black background.

Color Contrast Check

Large Text (above 18pt) WCAG AA ✓ Pass

Any Text WCAG AA ✓ Pass

Large Text (above 18pt) WCAG AAA ✓ Pass

Any Text WCAG AAA ✓ Pass

If you want to check with other color combinations, try the [Color Contrast Checker](#).

HunterLab 58.8931, 3.2745, 22.0640 Background



This preview shows how black text looks on a background with the HunterLab color 58.8931, 3.2745, 22.0640.



This preview shows how white text looks on a background with the HunterLab color 58.8931, 3.2745,

Color Blindness Simulation

Color vision deficiency is a very complex topic, and I could not describe the different causes any better than Wikipedia does, so if you want to learn more, you should check out their [article about color blindness](#).

Dichromacy



Original Color

58.8931, 3.2745, 22.0640

Protanopia

58.9191, -5.3118, 21.0791

Deuteranopia

58.8350, 4.5025, 22.0356



Tritanopia

58.9961, 14.3126, 4.0948

Trichromacy



Original Color

58.8931, 3.2745, 22.0640

Protanomaly

58.9107, -2.4018, 21.4116

Deuteranomaly

58.7251, 4.1341, 21.9346

Tritanomaly

58.8174, 10.0235, 11.4081

Monochromacy



Original Color

58.8931, 3.2745, 22.0640

Achromatopsia

58.8816, -3.1418, 3.1991

Achromatomaly

58.7822, -1.5419, 11.1690

CSS Examples

Text

The CSS property to change the color of the text to HunterLab 58.8931, 3.2745, 22.0640 is called "color". The color property can be set on classes, ids or directly on the HTML element.

This example shows how text in the color `rgb(189, 153, 108)` looks like.

```
.text, #text, p{  
    color:rgb(189, 153, 108)  
}
```

If you want to add a text shadow in that color use the text-shadow property, you can generate a text shadow directly with our [CSS Text Shadow Generator](#).

Here you see how black text with a 4 pixel rgb(189, 153, 108) colored shadow looks like.

```
.shadow{ text-shadow: 4px 4px 2px rgb(189, 153, 108) }
```

Border

The CSS property to change the border of an element to HunterLab 58.8931, 3.2745, 22.0640 is called "border". The border property can be set on classes, ids or directly on the HTML element.

This example shows the color as border, it can be applied via the CSS property "border" or "border-color".

```
.border, #border, table{ border:4px solid rgb(189, 153, 108) }
```


If only the border color should be changed use the property `border-color`.

```
.border{ border-color:rgb(189, 153, 108) }
```

If you want to add a box shadow in that color use:

Here you see how a box with a 4 pixel `rgb(189, 153, 108)` colored shadow looks like.

```
.boxshadow{ -moz-box-shadow:4px 4px 4px  
4px rgb(189, 153, 108); -webkit-box-  
shadow:4px 4px 4px 4px rgb(189, 153, 108);  
box-shadow:4px 4px 4px 4px rgb(189, 153,  
108) }
```

Background

The CSS property to change the background color of an element to HunterLab 58.8931, 3.2745, 22.0640 is called "background". The background property can be set on classes, ids or directly on the HTML element.

```
.background, #background, body{  
background: rgb(189, 153, 108) }
```

If only the background color should be changed can be used:

```
.background{ background-color: rgb(189,  
153, 108) }
```

This example shows the color as background, it is applied via the CSS property "background".

To optimize and compress your CSS code, you can use our [online CSS compressor and optimizer](#) based on csstidy. If you want to create a linear or radial gradient as background or border, check our [CSS Gradient Generator](#).

Hey! You found this booklet interesting? Support Converting Colors with the new Membership Option!

The pro membership hides all ads, plus gives you double the colors in the color bucket, and more awesome pro features!

[Learn more, Memberships starting at \\$2.50/m!](#)

**Follow me
on Twitter!**

@ConvertingColor