

Converting Colors

HunterLab(59.0754, 4.3444,
7.5197)

Have a look what the booklet for
HunterLab(59.0754, 4.3444, 7.5197)
contains.

HunterLab(59.0736, 4.3462, 7.5171)	3
<i>Conversions</i>	4
<i>Details</i>	6
<i>Harmonies</i>	12
<i>Previews</i>	24
<i>Color Blindness Simulation</i>	28
<i>CSS Examples</i>	31

Color

**HunterLab(59.0736, 4.3462,
7.5171)**

Conversions

Conversions Part 1

Format	Color
Hex	B39A96
RGB	179, 154, 150
RGB Percent	70%, 60%, 59%
CMY	0.2980, 0.3961, 0.4118
CMYK	0.00, 0.14, 0.16, 0.30
HSL	8°, 16%, 65%
HSV	8°, 16%, 70%
XYZ	35.6510, 34.8969, 33.7109
YIQ	161.0190, 16.1840, 4.0560

Conversions

Conversions Part 2

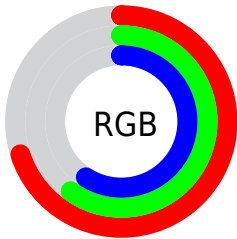
Format	Color
RYB	179, 155, 150
Decimal	11770518
CIELab	65.67, 8.57, 5.51
CIELCh	66, 10.187, 32.728
Yxy	34.8985, 0.3419, 0.3347
Android (android.graphics.Color)	4289960598 (0xFFB39A96)
YUV	161.0190, -5.4324, 15.7693
Hunter-Lab	59.0736, 4.3462, 7.5171

Details

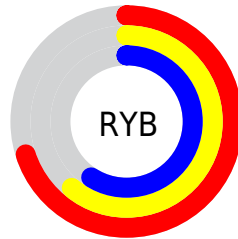
The HunterLab color $59.0736, 4.3462, 7.5171$ is a light color, and the websafe version is hex 999999 . A complement of this color would be $63.5592, -10.0022, -0.7937$, and the grayscale version is $59.7250, -3.1868, 3.2450$.

A 20% lighter version of the original color is $81.9351, 4.1364, 9.2223$, and $38.7775, 4.4395, 5.9236$ is the 20% darker color. If you saturate the color by 10%, you get $54.4013, 9.5773, 9.8584$, and if you desaturate by 10%, it is $63.9881, -0.6247, 5.1370$.

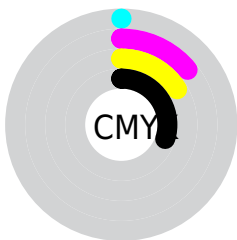
Distribution



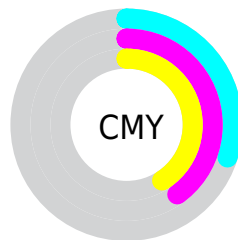
- Red (70%)
- Green (60%)
- Blue (59%)



- Red (70%)
- Yellow (61%)
- Blue (59%)



- Cyan (0%)
- Magenta (14%)
- Yellow (16%)
- Black (30%)



- Cyan (30%)
- Magenta (40%)
- Yellow (41%)

Brightness & Saturation Gradients

These gradients show how the HunterLab color 59.0736, 4.3462, 7.5171 changes by changing the brightness by 10 percent. The first figure shows a shift by +10% for each color and the second figure -10%.

Similar to the brightness gradients but the following saturation gradients show a change of the HunterLab color 59.0736, 4.3462, 7.5171 by changing the saturation by 10% instead.

■ 59.0736, 4.3462,
7.5171

■ 59.0736, 4.3462,
7.5171

180.0333, 1.1203,
16.1680

■ 48.5641, 4.4553,
6.6517

■ 82.0539, 3.9454,
9.3044

■ 38.7632, 4.4977,
5.8008

■ 94.4529, 3.6679,
10.2260

■ 29.7279, 4.4614,
4.9622

107.4202, 3.3439,
11.1673

■ 21.5299, 4.3322,
4.1298

120.9319, 2.9764,
12.1282

■ 14.2651, 4.0885,
3.2916

134.9670, 2.5681,
13.1089

■ 7.9225, 4.2905,
3.3130

149.5067, 2.1214,

0.0000, NaN, NaN

14.1091

0.0000, NaN, NaN

164.5339, 1.6382,
15.1289

0.0000, NaN, NaN

■ 59.0736, 4.3462,
7.5171

■ 59.0736, 4.3462,
7.5171

■ 54.4013, 9.5773,
9.8584

■ 63.9881, -0.6247,
5.1370

■ 50.0055, 15.0821,
12.1306

■ 69.1092, -5.3514,
2.7321

■ 45.9341, 20.8398,
14.2913

■ 74.4129, -9.8623,
0.3128

■ 42.2421, 26.7830,
16.2756

■ 79.8780, -14.1847,
-2.1155

■ 38.9916, 32.7694,
17.9936

■ 85.4874, -18.3444,
-4.5504

■ 36.2476, 38.5577,
19.3347

■ 91.1415, -22.8487,
-5.7839

■ 34.0687, 43.8049,
20.1886

■ 93.9807, -26.9541,
-2.2470

■ 32.4907, 48.1110,
20.5065

■ 32.0417, 49.3946,
20.6087

Harmonies

Analogous

The Analogous color harmony consists of three colors that are next to each other on the color wheel.



59.0749, 5.7899, 3.6083



59.0736, 4.3462, 7.5171



59.0749, 0.8849, 10.1099

Triad

The Triadic color harmony groups three colors that are evenly spaced from another and form a triangle on the color wheel.



59.0749, 4.3444, 7.5180



59.0749, -10.6922, 6.8840



59.0749, -2.7405, -5.6643

Complementary

The Complementary color scheme is a pair of colors which are on the opposite of each other on the color wheel.



59.0736, 4.3462, 7.5171



63.5592, -10.0022, -0.7937

Split Complementary

Split-complementary colors differ from the complementary color scheme. The scheme consists of three colors, the original color and two neighbors of the complement color.



59.0749, -7.0897, -4.6249



59.0736, 4.3462, 7.5171



59.0749, -11.5979, 2.8202

Square

The Square scheme is like the rectangle color scheme, but the four colors are evenly spaced on the color wheel.



59.0749, 4.3444, 7.5180



59.0749, -7.7865, 9.7637



59.0749, -10.2985, -1.4369



59.0749, 1.6232, -4.1801

Rectangle

The Rectangle color scheme consists of four colors that form a rectangle on the color wheel.



59.0736, 4.3462, 7.5171



59.0749, -2.0498, 10.8512



59.0749, -10.2985, -1.4369



59.0749, -4.2526, -5.5985

Sweetspot

The Sweet Spot groups the original color and five complimentary colors.



59.0749, 4.3444, 7.5180



86.3851, -1.5576, 6.5168



58.7343, 10.4158, -4.6366



40.4403, -0.5220, 3.1723



95.4677, -5.0939, 5.1869



42.2927, -2.2566, 2.2978

Same Dimension

The Same Dimension uses a secret algorithm to generate beautiful new colors.



59.0749, 4.3444, 7.5180



77.0699, 7.9601, 11.0457



63.1878, -2.7624, 11.8129



29.4758, 0.4238, 2.7774



27.0427, 41.1720, 17.3844



5.3805, 5.5643, 3.4129

Inverse Universe

The Inverse Universe completely reimagines the original color for something new.



63.5592, -10.0022, -0.7937



84.1952, -14.8617, -2.1669



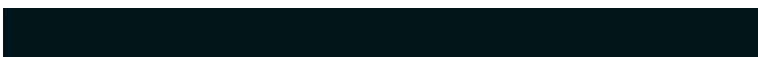
59.2460, -3.0641, -6.2263



30.7043, -3.4998, 0.5018



43.3239, -18.1984, -14.8660



8.0338, -3.6732, -2.1120

Previews

White Background



This preview shows how the HunterLab color 59.0736, 4.3462, 7.5171 looks on a white background.

Color Contrast Check

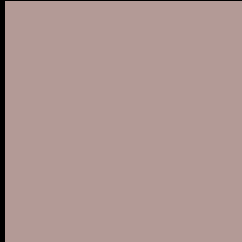
Large Text (above 18pt) WCAG AA × Fail

Any Text WCAG AA × Fail

Large Text (above 18pt) WCAG AAA × Fail

Any Text WCAG AAA × Fail

Black Background



This preview shows how the HunterLab color 59.0736, 4.3462, 7.5171 looks on a black background.

Color Contrast Check

Large Text (above 18pt) WCAG AA ✓ Pass

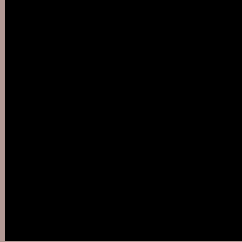
Any Text WCAG AA ✓ Pass

Large Text (above 18pt) WCAG AAA ✓ Pass

Any Text WCAG AAA ✓ Pass

If you want to check with other color combinations, try the [Color Contrast Checker](#).

HunterLab 59.0736, 4.3462, 7.5171 Background



This preview shows how black text looks on a background with the HunterLab color 59.0736, 4.3462, 7.5171.



This preview shows how white text looks on a background with the HunterLab color 59.0736, 4.3462,

Color Blindness Simulation

Color vision deficiency is a very complex topic, and I could not describe the different causes any better than Wikipedia does, so if you want to learn more, you should check out their [article about color blindness](#).

Dichromacy



Original Color

59.0736, 4.3462, 7.5171

Protanopia

59.1512, -2.5496, 6.1964

Deuteranopia

59.0736, 4.3462, 7.5171



Tritanopia

59.1275, 8.1814, 1.3588

Trichromacy



Original Color

59.0736, 4.3462, 7.5171

Protanomaly

59.0050, -0.1411, 6.5069

Deuteranomaly

59.0736, 4.3462, 7.5171

Tritanomaly

59.1515, 6.5445, 3.6857

Monochromacy



Original Color

59.0736, 4.3462, 7.5171

Achromatopsia

59.6993, -3.1854, 3.2436

Achromatomaly

59.3404, -0.1844, 4.6909

CSS Examples

Text

The CSS property to change the color of the text to HunterLab 59.0736, 4.3462, 7.5171 is called "color". The color property can be set on classes, ids or directly on the HTML element.

This example shows how text in the color `rgb(179, 154, 150)` looks like.

```
.text, #text, p{  
    color:rgb(179, 154, 150)  
}
```

If you want to add a text shadow in that color use the text-shadow property, you can generate a text shadow directly with our [CSS Text Shadow Generator](#).

Here you see how black text with a 4 pixel rgb(179, 154, 150) colored shadow looks like.

```
.shadow{ text-shadow: 4px 4px 2px rgb(179, 154, 150) }
```

Border

The CSS property to change the border of an element to HunterLab 59.0736, 4.3462, 7.5171 is called "border". The border property can be set on classes, ids or directly on the HTML element.

This example shows the color as border, it can be applied via the CSS property "border" or "border-color".

```
.border, #border, table{ border:4px solid rgb(179, 154, 150) }
```


If only the border color should be changed use the property `border-color`.

```
.border{ border-color:rgb(179, 154, 150) }
```

If you want to add a box shadow in that color use:

Here you see how a box with a 4 pixel `rgb(179, 154, 150)` colored shadow looks like.

```
.boxshadow{ -moz-box-shadow:4px 4px 4px  
4px rgb(179, 154, 150); -webkit-box-  
shadow:4px 4px 4px 4px rgb(179, 154, 150);  
box-shadow:4px 4px 4px 4px rgb(179, 154,  
150) }
```

Background

The CSS property to change the background color of an element to HunterLab 59.0736, 4.3462, 7.5171 is called "background". The background property can be set on classes, ids or directly on the HTML element.

```
.background, #background, body{  
background: rgb(179, 154, 150) }
```

If only the background color should be changed can be used:

```
.background{ background-color: rgb(179,  
154, 150) }
```

This example shows the color as background, it is applied via the CSS property "background".

To optimize and compress your CSS code, you can use our [online CSS compressor and optimizer](#) based on csstidy. If you want to create a linear or radial gradient as background or border, check our [CSS Gradient Generator](#).

Hey! You found this booklet interesting? Support Converting Colors with the new Membership Option!

The pro membership hides all ads, plus gives you double the colors in the color bucket, and more awesome pro features!

[Learn more, Memberships starting at \\$2.50/m!](#)

**Follow me
on Twitter!**

@ConvertingColor