

Converting Colors

HunterLab(59.1569, 13.9227,
13.5572)

Have a look what the booklet for
HunterLab(59.1569, 13.9227,
13.5572) contains.

HunterLab(59.1897, 13.7126, 13.7520)	3
<i>Conversions</i>	4
<i>Details</i>	6
<i>Harmonies</i>	12
<i>Previews</i>	24
<i>Color Blindness Simulation</i>	28
<i>CSS Examples</i>	31

Color

**HunterLab(59.1897, 13.7126,
13.7520)**

Conversions

Conversions Part 1

Format	Color
Hex	C99387
RGB	201, 147, 135
RGB Percent	79%, 58%, 53%
CMY	0.2118, 0.4235, 0.4706
CMYK	0.00, 0.27, 0.33, 0.21
HSL	11°, 38%, 66%
HSV	11°, 33%, 79%
XYZ	38.8943, 35.0342, 27.6340
YIQ	161.7780, 36.0360, 7.7160

Conversions

Conversions Part 2

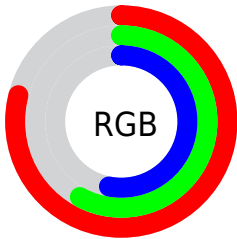
Format	Color
R_{YB}	201, 150, 135
Decimal	13210503
CIE _{Lab}	65.78, 18.73, 14.37
CIE _{LCh}	66, 23.603, 37.494
Yxy	35.0359, 0.3830, 0.3450
Android (android.graphics.Color)	4291400583 (0xFFC99387)
YUV	161.7780, -13.2016, 34.3977
Hunter-Lab	59.1897, 13.7126, 13.7520

Details

The HunterLab color **59.1897, 13.7126, 13.7520** is a light color, and the websafe version is hex **CC9999**. A complement of this color would be **67.6473, -16.1832, -7.0311**, and the grayscale version is **60.0609, -3.2047, 3.2632**.

A 20% lighter version of the original color is **81.6481, 12.7822, 15.9862**, and **38.7832, 12.6716, 10.9812** is the 20% darker color. If you saturate the color by 10%, you get **54.5600, 19.7915, 16.3728**, and if you desaturate by 10%, it is **64.1418, 7.9436, 10.9571**.

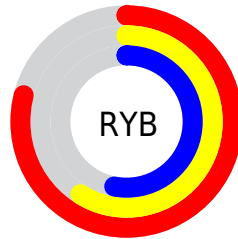
Distribution



Red (79%)

Green (58%)

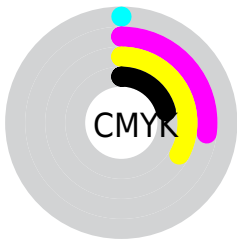
Blue (53%)



Red (79%)

Yellow (59%)

Blue (53%)

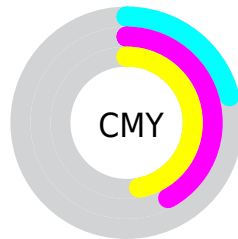


Cyan (0%)

Magenta (27%)

Yellow (33%)

Black (21%)



Cyan (21%)

Magenta (42%)

Yellow (47%)

Brightness & Saturation Gradients

These gradients show how the HunterLab color 59.1897, 13.7126, 13.7520 changes by changing the brightness by 10 percent. The first figure shows a shift by +10% for each color and the second figure -10%.

Similar to the brightness gradients but the following saturation gradients show a change of the HunterLab color 59.1897, 13.7126, 13.7520 by changing the saturation by 10% instead.

■ 59.1897, 13.7126,
13.7520

■ 59.1897, 13.7126,
13.7520

180.2017, 14.1651,
25.9303

■ 48.6729, 13.3219,
12.3715

■ 82.1835, 14.2401,
16.4668

■ 38.8641, 12.8374,
10.9601

■ 94.5887, 14.3979,
17.8123

■ 29.8204, 12.2421,
9.5021

■ 107.5620, 14.4925,
19.1559

■ 21.6129, 11.5170,
7.9707

121.0794, 14.5288,
20.5006

■ 14.3375, 10.6382,
6.3257

135.1200, 14.5109,
21.8488

■ 7.9969, 10.2305,
5.5978

149.6650, 14.4423,

0.0000, INF, NaN

23.2023

0.0000, NaN, NaN

164.6973, 14.3262,
24.5624

0.0000, NaN, NaN

■ 59.1897, 13.7126,
13.7520

■ 59.1897, 13.7126,
13.7520

■ 54.5600, 19.7915,
16.3728

■ 64.1418, 7.9436,
10.9571

■ 50.3002, 26.1518,
18.7470

■ 69.3687, 2.4915,
8.0349

■ 46.4711, 32.6959,
20.7832

■ 74.8356, -2.6655,
5.0204

■ 43.1375, 39.2416,
22.3689

■ 80.5129, -7.5558,
1.9368

■ 40.3631, 45.5018,
23.3891

■ 86.3762, -12.2098,
-1.2005

■ 38.1997, 51.0941,
23.7657

■ 92.3843, -16.7752,
-4.0838

■ 37.0315, 54.4245,
23.7715

■ 95.4765, -21.4490,
-0.2939

Harmonies

Analogous

The Analogous color harmony consists of three colors that are next to each other on the color wheel.



59.1911, 18.1971, 5.6704



59.1897, 13.7126, 13.7520



59.1911, 4.7603, 18.3504

Triad

The Triadic color harmony groups three colors that are evenly spaced from another and form a triangle on the color wheel.



59.1911, 13.7101, 13.7529



59.1911, -20.6694, 10.1071



59.1911, -0.5075, -19.1374

Complementary

The Complementary color scheme is a pair of colors which are on the opposite of each other on the color wheel.



59.1897, 13.7126, 13.7520



67.6473, -16.1832, -7.0311

Split Complementary

Split-complementary colors differ from the complementary color scheme. The scheme consists of three colors, the original color and two neighbors of the complement color.



59.1911, -10.6874, -17.3903



59.1897, 13.7126, 13.7520



59.1911, -21.8642, 0.6641

Square

The Square scheme is like the rectangle color scheme, but the four colors are evenly spaced on the color wheel.



59.1911, 13.7101, 13.7529



59.1911, -14.9469, 16.5153



59.1911, -18.3323, -9.6895



59.1911, 9.6249, -14.1162

Rectangle

The Rectangle color scheme consists of four colors that form a rectangle on the color wheel.



59.1897, 13.7126, 13.7520



59.1911, -2.2767, 19.3664



59.1911, -18.3323, -9.6895



59.1911, -4.0411, -19.3355

Sweetspot

The Sweet Spot groups the original color and five complimentary colors.



59.1911, 13.7101, 13.7529



92.6657, 1.4048, 9.4607



57.8476, 28.5072, -13.7855



42.4056, 1.1022, 4.6349

0.0000, NaN, NaN



46.2646, -2.4686, 2.5136

Same Dimension

The Same Dimension uses a secret algorithm to generate beautiful new colors.



59.1911, 13.7101, 13.7529



73.3332, 23.2355, 20.3262



68.1228, -2.4012, 21.9850



33.0814, 0.3136, 3.2513



29.5301, 42.6288, 18.9426



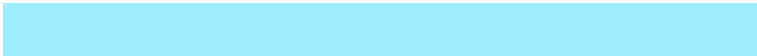
7.1460, 7.1682, 4.5288

Inverse Universe

The Inverse Universe completely reimagines the original color for something new.



67.6473, -16.1832, -7.0311



86.4641, -23.4572, -12.0061



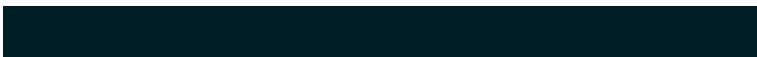
57.8638, -0.7223, -20.9776



34.2444, -3.7555, 0.4018



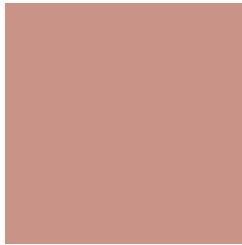
44.2362, -16.5340, -19.5993



10.0720, -4.1867, -3.5513

Previews

White Background



This preview shows how the HunterLab color 59.1897, 13.7126, 13.7520 looks on a white background.

Color Contrast Check

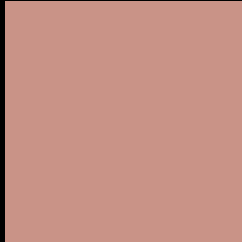
Large Text (above 18pt) WCAG AA × Fail

Any Text WCAG AA × Fail

Large Text (above 18pt) WCAG AAA × Fail

Any Text WCAG AAA × Fail

Black Background



This preview shows how the HunterLab color 59.1897, 13.7126, 13.7520 looks on a black background.

Color Contrast Check

Large Text (above 18pt) WCAG AA ✓ Pass

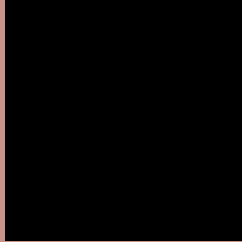
Any Text WCAG AA ✓ Pass

Large Text (above 18pt) WCAG AAA ✓ Pass

Any Text WCAG AAA ✓ Pass

If you want to check with other color combinations, try the [Color Contrast Checker](#).

HunterLab 59.1897, 13.7126, 13.7520 Background



This preview shows how black text looks on a background with the HunterLab color 59.1897, 13.7126, 13.7520.



This preview shows how white text looks on a background with the HunterLab color 59.1897, 13.7126, 13.7520.

Color Blindness Simulation

Color vision deficiency is a very complex topic, and I could not describe the different causes any better than Wikipedia does, so if you want to learn more, you should check out their [article about color blindness](#).

Dichromacy



Original Color

59.1897, 13.7126, 13.7520

Protanopia

59.3971, -3.8273, 11.3794

Deuteranopia

59.2847, 4.2414, 14.0489



Tritanopia

59.1689, 18.6894, 5.7130

Trichromacy



Original Color

59.1897, 13.7126, 13.7520

Protanomaly

59.0682, 2.3136, 11.9202

Deuteranomaly

59.1023, 7.8816, 13.9307

Tritanomaly

59.1147, 16.8115, 8.6205

Monochromacy



Original Color

59.1897, 13.7126, 13.7520

Achromatopsia

60.1088, -3.2073, 3.2658

Achromatomaly

59.6750, 2.1422, 7.2948

CSS Examples

Text

The CSS property to change the color of the text to HunterLab 59.1897, 13.7126, 13.7520 is called "color". The color property can be set on classes, ids or directly on the HTML element.

This example shows how text in the color `rgb(201, 147, 135)` looks like.

```
.text, #text, p{  
    color:rgb(201, 147, 135)  
}
```

If you want to add a text shadow in that color use the text-shadow property, you can generate a text shadow directly with our [CSS Text Shadow Generator](#).

Here you see how black text with a 4 pixel rgb(201, 147, 135) colored shadow looks like.

```
.shadow{ text-shadow: 4px 4px 2px rgb(201, 147, 135) }
```

Border

The CSS property to change the border of an element to HunterLab 59.1897, 13.7126, 13.7520 is called "border". The border property can be set on classes, ids or directly on the HTML element.

This example shows the color as border, it can be applied via the CSS property "border" or "border-color".

```
.border, #border, table{ border:4px solid rgb(201, 147, 135) }
```


If only the border color should be changed use the property border-color.

```
.border{ border-color:rgb(201, 147, 135) }
```

If you want to add a box shadow in that color use:

Here you see how a box with a 4 pixel rgb(201, 147, 135) colored shadow looks like.

```
.boxshadow{ -moz-box-shadow:4px 4px 4px  
4px rgb(201, 147, 135); -webkit-box-  
shadow:4px 4px 4px 4px rgb(201, 147, 135);  
box-shadow:4px 4px 4px 4px rgb(201, 147,  
135) }
```

Background

The CSS property to change the background color of an element to HunterLab 59.1897, 13.7126, 13.7520 is called "background". The background property can be set on classes, ids or directly on the HTML element.

```
.background, #background, body{  
background: rgb(201, 147, 135) }
```

If only the background color should be changed can be used:

```
.background{ background-color: rgb(201,  
147, 135) }
```

This example shows the color as background, it is applied via the CSS property "background".

To optimize and compress your CSS code, you can use our [online CSS compressor and optimizer](#) based on csstidy. If you want to create a linear or radial gradient as background or border, check our [CSS Gradient Generator](#).

Hey! You found this booklet interesting? Support Converting Colors with the new Membership Option!

The pro membership hides all ads, plus gives you double the colors in the color bucket, and more awesome pro features!

[Learn more, Memberships starting at \\$2.50/m!](#)

**Follow me
on Twitter!**

@ConvertingColor