

Converting Colors

HunterLab(59.1645, 4.8678,
4.2936)

Have a look what the booklet for
HunterLab(59.1645, 4.8678, 4.2936)
contains.

HunterLab(59.0990, 4.8825, 4.0497)	3
<i>Conversions</i>	4
<i>Details</i>	6
<i>Harmonies</i>	12
<i>Previews</i>	24
<i>Color Blindness Simulation</i>	28
<i>CSS Examples</i>	31

Color

**HunterLab(59.0990, 4.8825,
4.0497)**

Conversions

Conversions Part 1

Format	Color
Hex	B19A9E
RGB	177, 154, 158
RGB Percent	69%, 60%, 62%
CMY	0.3059, 0.3961, 0.3804
CMYK	0.00, 0.13, 0.11, 0.31
HSL	350°, 13%, 65%
HSV	350°, 13%, 69%
XYZ	35.8586, 34.9269, 37.1994
YIQ	161.3330, 12.4240, 6.1200

Conversions

Conversions Part 2

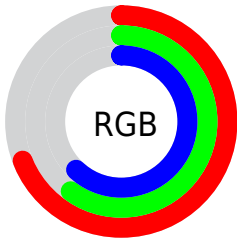
Format	Color
RYB	177, 154, 158
Decimal	11639454
CIELab	65.69, 9.17, 1.03
CIElCh	66, 9.226, 6.432
Yxy	34.9285, 0.3321, 0.3234
Android (android.graphics.Color)	4289829534 (0xFFB19A9E)
YUV	161.3330, -1.6432, 13.7400
Hunter-Lab	59.0990, 4.8825, 4.0497

Details

The HunterLab color $59.0990, 4.8825, 4.0497$ is a light color, and the websafe version is hex 999999 . A complement of this color would be $64.2902, -10.9091, 2.9622$, and the grayscale version is $59.8396, -3.1929, 3.2512$.

A 20% lighter version of the original color is $81.9997, 4.8964, 5.0969$, and $38.7906, 4.8970, 2.7275$ is the 20% darker color. If you saturate the color by 10%, you get $53.8850, 11.5897, 4.6482$, and if you desaturate by 10%, it is $64.6084, -1.6286, 3.6766$.

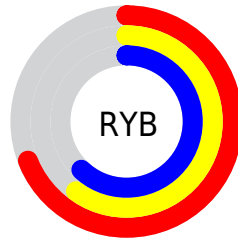
Distribution



Red (69%)

Green (60%)

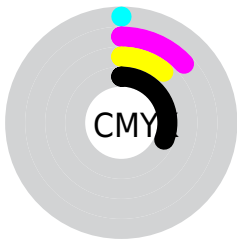
Blue (62%)



Red (69%)

Yellow (60%)

Blue (62%)

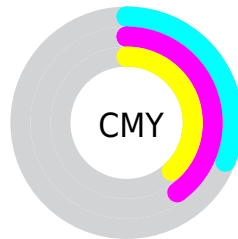


Cyan (0%)

Magenta (13%)

Yellow (11%)

Black (31%)



Cyan (31%)

Magenta (40%)

Yellow (38%)

Brightness & Saturation Gradients

These gradients show how the HunterLab color 59.0990, 4.8825, 4.0497 changes by changing the brightness by 10 percent. The first figure shows a shift by +10% for each color and the second figure -10%.

Similar to the brightness gradients but the following saturation gradients show a change of the HunterLab color 59.0990, 4.8825, 4.0497 by changing the saturation by 10% instead.

■ 59.0990, 4.8825,
4.0497

■ 59.0990, 4.8825,
4.0497

180.0701, 1.8773,
11.0150

■ 48.5878, 4.9614,
3.4250

■ 82.0822, 4.5379,
5.3995

■ 38.7852, 4.9716,
2.8340

■ 94.4825, 4.2866,
6.1197

■ 29.7481, 4.9008,
2.2796

107.4511, 3.9876,
6.8689

■ 21.5480, 4.7343,
1.7643

120.9642, 3.6443,
7.6459

■ 14.2809, 4.4500,
1.2906

135.0005, 3.2593,
8.4498

■ 7.9388, 4.6081,
0.9718

149.5413, 2.8352,

0.0000, NaN, NaN

9.2799

0.0000, NaN, NaN

164.5696, 2.3739,
10.1352

0.0000, NaN, NaN

■ 59.0990, 4.8825,
4.0497

■ 59.0990, 4.8825,
4.0497

■ 53.8850, 11.5897,
4.6482

■ 64.6084, -1.6286,
3.6766

■ 49.0156, 18.4757,
5.5080

■ 70.3670, -7.9440,
3.4901

■ 44.5576, 25.4631,
6.6672

■ 76.3425, -14.0841,
3.4609

■ 40.5901, 32.3861,
8.1498

■ 82.5079, -20.0719,
3.5634

■ 37.2020, 38.9486,
9.9476

■ 88.8418, -25.9307,
3.7769

■ 34.4827, 44.7087,
11.9941

■ 93.5443, -29.2003,
1.9992

■ 32.5007, 49.1418,
14.1469

■ 93.8548, -27.4219,
-2.4129

■ 31.2733, 51.8265,
16.1987

■ 30.7325, 52.9483,
17.3947

Harmonies

Analogous

The Analogous color harmony consists of three colors that are next to each other on the color wheel.



59.1003, 4.2422, 0.1401



59.0990, 4.8825, 4.0497



59.1003, 3.3190, 7.4984

Triad

The Triadic color harmony groups three colors that are evenly spaced from another and form a triangle on the color wheel.



59.1003, 4.8808, 4.0507



59.1003, -7.7646, 8.9367



59.1003, -6.2750, -4.0757

Complementary

The Complementary color scheme is a pair of colors which are on the opposite of each other on the color wheel.



59.0990, 4.8825, 4.0497



64.2902, -10.9091, 2.9622

Split Complementary

Split-complementary colors differ from the complementary color scheme. The scheme consists of three colors, the original color and two neighbors of the complement color.



59.1003, -9.3649, -1.4108



59.0990, 4.8825, 4.0497



59.1003, -10.2084, 6.1369

Square

The Square scheme is like the rectangle color scheme, but the four colors are evenly spaced on the color wheel.



59.1003, 4.8808, 4.0507



59.1003, -4.0369, 10.1927



59.1003, -10.7862, 2.3710



59.1003, -2.2711, -4.7285

Rectangle

The Rectangle color scheme consists of four colors that form a rectangle on the color wheel.



59.0990, 4.8825, 4.0497



59.1003, 1.2646, 9.1292



59.1003, -10.7862, 2.3710



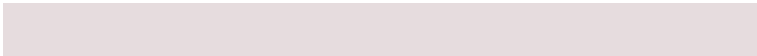
59.1003, -7.4516, -3.3771

Sweetspot

The Sweet Spot groups the original color and five complimentary colors.



59.1003, 4.8808, 4.0507



85.6530, -1.2549, 4.9612



59.2846, 6.6862, -4.9512



39.6155, -0.2873, 2.3235



94.3401, -5.0338, 5.1257



41.3092, -2.2042, 2.2444

Same Dimension

The Same Dimension uses a secret algorithm to generate beautiful new colors.



59.1003, 4.8808, 4.0507



76.7556, 9.4485, 5.6478



61.0495, 0.6435, 7.9371



29.2037, 1.1815, 1.8595



26.1717, 45.1150, 14.6233



4.7201, 8.2892, 1.4550

Inverse Universe

The Inverse Universe completely reimagines the original color for something new.



59.1003, 4.8808, 4.0507



76.7556, 9.4485, 5.6478



62.2003, -6.7298, -1.4394



29.2037, 1.1815, 1.8595



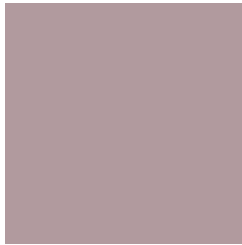
26.1717, 45.1150, 14.6233



4.7201, 8.2892, 1.4550

Previews

White Background



This preview shows how the HunterLab color 59.0990, 4.8825, 4.0497 looks on a white background.

Color Contrast Check

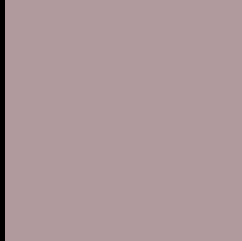
Large Text (above 18pt) WCAG AA × Fail

Any Text WCAG AA × Fail

Large Text (above 18pt) WCAG AAA × Fail

Any Text WCAG AAA × Fail

Black Background



This preview shows how the HunterLab color 59.0990, 4.8825, 4.0497 looks on a black background.

Color Contrast Check

Large Text (above 18pt) WCAG AA ✓ Pass

Any Text WCAG AA ✓ Pass

Large Text (above 18pt) WCAG AAA ✓ Pass

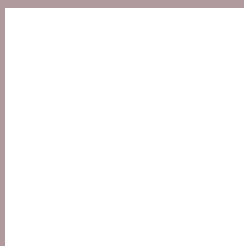
Any Text WCAG AAA ✓ Pass

If you want to check with other color combinations, try the [Color Contrast Checker](#).

HunterLab 59.0990, 4.8825, 4.0497 Background



This preview shows how black text looks on a background with the HunterLab color 59.0990, 4.8825, 4.0497.



This preview shows how white text looks on a background with the HunterLab color 59.0990, 4.8825,

Color Blindness Simulation

Color vision deficiency is a very complex topic, and I could not describe the different causes any better than Wikipedia does, so if you want to learn more, you should check out their [article about color blindness](#).

Dichromacy



Original Color

59.0990, 4.8825, 4.0497

Protanopia

59.2038, -1.9059, 2.6804

Deuteranopia

59.2802, 4.0500, 4.2460



Tritanopia

59.1304, 6.8356, 0.8622

Trichromacy



Original Color

59.0990, 4.8825, 4.0497

Protanomaly

59.0487, 0.4675, 3.0001

Deuteranomaly

59.2802, 4.0500, 4.2460

Tritanomaly

59.0390, 6.3501, 2.1630

Monochromacy



Original Color

59.0990, 4.8825, 4.0497

Achromatopsia

59.6993, -3.1854, 3.2436

Achromatomaly

59.3357, -0.0258, 3.3299

CSS Examples

Text

The CSS property to change the color of the text to HunterLab 59.0990, 4.8825, 4.0497 is called "color". The color property can be set on classes, ids or directly on the HTML element.

This example shows how text in the color `rgb(177, 154, 158)` looks like.

```
.text, #text, p{  
    color:rgb(177, 154, 158)  
}
```

If you want to add a text shadow in that color use the text-shadow property, you can generate a text shadow directly with our [CSS Text Shadow Generator](#).

Here you see how black text with a 4 pixel rgb(177, 154, 158) colored shadow looks like.

```
.shadow{ text-shadow: 4px 4px 2px rgb(177, 154, 158) }
```

Border

The CSS property to change the border of an element to HunterLab 59.0990, 4.8825, 4.0497 is called "border".

The border property can be set on classes, ids or directly on the HTML element.

This example shows the color as border, it can be applied via the CSS property "border" or "border-color".

```
.border, #border, table{ border:4px solid rgb(177, 154, 158) }
```


If only the border color should be changed use the property `border-color`.

```
.border{ border-color:rgb(177, 154, 158) }
```

If you want to add a box shadow in that color use:

Here you see how a box with a 4 pixel `rgb(177, 154, 158)` colored shadow looks like.

```
.boxshadow{ -moz-box-shadow:4px 4px 4px  
4px rgb(177, 154, 158); -webkit-box-  
shadow:4px 4px 4px 4px rgb(177, 154, 158);  
box-shadow:4px 4px 4px 4px rgb(177, 154,  
158) }
```

Background

The CSS property to change the background color of an element to HunterLab 59.0990, 4.8825, 4.0497 is called "background". The background property can be set on classes, ids or directly on the HTML element.

```
.background, #background, body{  
background: rgb(177, 154, 158) }
```

If only the background color should be changed can be used:

```
.background{ background-color: rgb(177,  
154, 158) }
```

This example shows the color as background, it is applied via the CSS property "background".

To optimize and compress your CSS code, you can use our [online CSS compressor and optimizer](#) based on csstidy. If you want to create a linear or radial gradient as background or border, check our [CSS Gradient Generator](#).

Hey! You found this booklet interesting? Support Converting Colors with the new Membership Option!

The pro membership hides all ads, plus gives you double the colors in the color bucket, and more awesome pro features!

[Learn more, Memberships starting at \\$2.50/m!](#)

**Follow me
on Twitter!**

@ConvertingColor