

# Converting Colors

HunterLab(59.2166, 10.5949,  
1.8870)

Have a look what the booklet for  
HunterLab(59.2166, 10.5949,  
1.8870) contains.

<b>HunterLab(59.0730, 10.7421, 1.8109)</b> .....	3
<b><i>Conversions</i></b> .....	4
<b><i>Details</i></b> .....	6
<b><i>Harmonies</i></b> .....	12
<b><i>Previews</i></b> .....	24
<b><i>Color Blindness Simulation</i></b> .....	28
<b><i>CSS Examples</i></b> .....	31

# Color

**HunterLab(59.0730, 10.7421,  
1.8109)**

# Conversions

## Conversions Part 1

Format	Color
Hex	BA96A3
RGB	186, 150, 163
RGB Percent	73%, 59%, 64%
CMY	0.2706, 0.4117, 0.3608
CMYK	0.00, 0.19, 0.12, 0.27
HSL	338°, 21%, 66%
HSV	338°, 19%, 73%
XYZ	37.7670, 34.8962, 39.3955
YIQ	162.2460, 17.2830, 11.6750

# Conversions

## Conversions Part 2

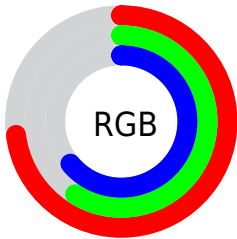
<b>Format</b>	<b>Color</b>
<b>R<sub>YB</sub></b>	186, 150, 163
Decimal	12228259
CIE <sub>Lab</sub>	65.67, 15.57, -1.71
CIE <sub>LCh</sub>	66, 15.663, 353.744
Yxy	34.8978, 0.3370, 0.3114
Android (android.graphics.Color)	4290418339 (0xFFBA96A3)
YUV	162.2460, 0.3717, 20.8323
Hunter-Lab	59.0730, 10.7421, 1.8109

# Details

The HunterLab color **59.0730, 10.7421, 1.8109** is a light color, and the websafe version is hex **CC9999**. A complement of this color would be **66.7982, -16.2049, 5.7837**, and the grayscale version is **60.2043, -3.2124, 3.2710**.

A 20% lighter version of the original color is **81.9298, 11.0175, 2.6770**, and **38.7000, 9.9792, 0.9812** is the 20% darker color. If you saturate the color by 10%, you get **53.8691, 18.4441, 1.2377**, and if you desaturate by 10%, it is **64.6211, 3.1792, 2.7174**.

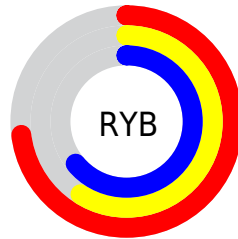
# Distribution



Red (73%)

Green (59%)

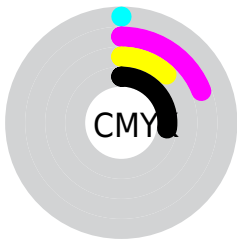
Blue (64%)



Red (73%)

Yellow (59%)

Blue (64%)

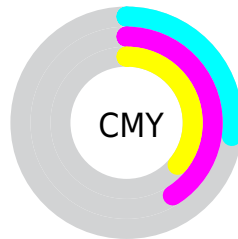


Cyan (0%)

Magenta (19%)

Yellow (12%)

Black (27%)



Cyan (27%)

Magenta (41%)

Yellow (36%)

# Brightness & Saturation Gradients

These gradients show how the HunterLab color 59.0730, 10.7421, 1.8109 changes by changing the brightness by 10 percent. The first figure shows a shift by +10% for each color and the second figure -10%.

Similar to the brightness gradients but the following saturation gradients show a change of the HunterLab color 59.0730, 10.7421, 1.8109 by changing the saturation by 10% instead.



■ 59.0730, 10.7421,  
1.8109

■ 59.0730, 10.7421,  
1.8109

180.0324, 10.0735,  
7.7775

■ 48.5635, 10.5024,  
1.3264

■ 82.0532, 10.9887,  
2.9040

■ 38.7626, 10.1758,  
0.8855

■ 94.4522, 11.0141,  
3.5053

■ 29.7275, 9.7467,  
0.4939

107.4194, 10.9811,  
4.1407

■ 21.5294, 9.1965,  
0.1577

120.9312, 10.8941,  
4.8086

■ 14.2648, 8.4998,  
-0.1143

134.9663, 10.7569,  
5.5074

■ 7.9221, 8.3058,  
-0.4618

149.5059, 10.5726,

0.0000, NaN, NaN

6.2359

0.0000, NaN, NaN

164.5330, 10.3440,  
6.9929

0.0000, NaN, NaN

■ 59.0730, 10.7421,  
1.8109

■ 59.0730, 10.7421,  
1.8109

■ 53.8691, 18.4441,  
1.2377

■ 64.6211, 3.1792,  
2.7174

■ 49.0681, 26.2132,  
1.0723

■ 70.4591, -4.2121,  
3.8902

■ 44.7464, 33.8857,  
1.4033

■ 76.5476, -11.4344,  
5.2797

■ 40.9905, 41.1761,  
2.3157

■ 82.8544, -18.5014,  
6.8465

■ 37.8904, 47.6526,  
3.8638

■ 89.3533, -25.4324,  
8.5603

■ 35.5229, 52.7771,  
6.0301

■ 93.7643, -29.1041,  
7.8990

■ 33.9249, 56.0584,  
8.6862

■ 94.1408, -26.9494,  
2.5281

■ 32.9876, 57.5510,  
11.5264

■ 94.4347, -25.2732,  
-1.6508

■ 32.9338, 57.6362,  
11.6986

# Harmonies

## Analogous

The Analogous color harmony consists of three colors that are next to each other on the color wheel.



59.0743, 8.0245, -4.8166



59.0730, 10.7421, 1.8109



59.0743, 9.5961, 8.1138

# Triad

The Triadic color harmony groups three colors that are evenly spaced from another and form a triangle on the color wheel.



59.0743, 10.7402, 1.8120



59.0743, -8.4461, 13.7188



59.0743, -10.8606, -7.9948

# Complementary

The Complementary color scheme is a pair of colors which are on the opposite of each other on the color wheel.



59.0730, 10.7421, 1.8109



66.7982, -16.2049, 5.7837

# Split Complementary

Split-complementary colors differ from the complementary color scheme. The scheme consists of three colors, the original color and two neighbors of the complement color.



59.0743, -14.9090, -2.1417



59.0730, 10.7421, 1.8109



59.0743, -13.5608, 10.2576

# Square

The Square scheme is like the rectangle color scheme, but the four colors are evenly spaced on the color wheel.



59.0743, 10.7402, 1.8120



59.0743, -1.6904, 14.5189



59.0743, -15.8743, 4.5856



59.0743, -4.6059, -10.8854



# Rectangle

The Rectangle color scheme consists of four colors that form a rectangle on the color wheel.



59.0730, 10.7421, 1.8109



59.0743, 6.8236, 11.3557



59.0743, -15.8743, 4.5856



59.0743, -12.5128, -6.2781

# Sweetspot

The Sweet Spot groups the original color and five complimentary colors.



59.0743, 10.7402, 1.8120



89.5169, 1.0171, 4.1363



58.4988, 10.4048, -10.8543



41.7686, 0.7845, 1.8946



97.7295, -5.2146, 5.3098



44.2712, -2.3622, 2.4053



# Same Dimension

The Same Dimension uses a secret algorithm to generate beautiful new colors.



59.0743, 10.7402, 1.8120



76.6498, 18.6181, 2.0689



60.0158, 6.3393, 8.5852



30.1071, 1.4725, 1.2669



27.0374, 47.3643, 9.2396



5.1940, 9.3222, 0.0440



# Inverse Universe

The Inverse Universe completely reimagines the original color for something new.



59.0743, 10.7402, 1.8120



76.6498, 18.6181, 2.0689



65.6958, -11.7016, -1.6486



30.1071, 1.4725, 1.2669



27.0374, 47.3643, 9.2396

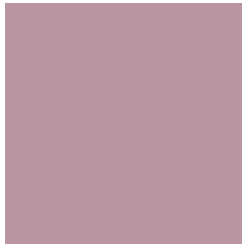


5.1940, 9.3222, 0.0440



# Previews

## White Background



This preview shows how the HunterLab color 59.0730, 10.7421, 1.8109 looks on a white background.

## Color Contrast Check

Large Text (above 18pt) WCAG AA × Fail

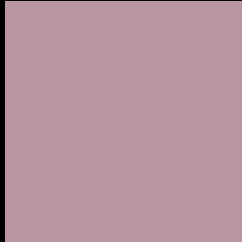
Any Text WCAG AA × Fail

Large Text (above 18pt) WCAG AAA × Fail

Any Text WCAG AAA × Fail



# Black Background



This preview shows how the HunterLab color 59.0730, 10.7421, 1.8109 looks on a black background.

## Color Contrast Check

Large Text (above 18pt) WCAG AA ✓ Pass

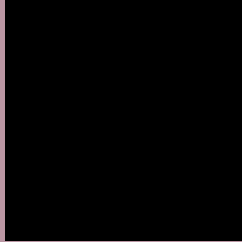
Any Text WCAG AA ✓ Pass

Large Text (above 18pt) WCAG AAA ✓ Pass

Any Text WCAG AAA ✓ Pass

If you want to check with other color combinations, try the [Color Contrast Checker](#).

# HunterLab 59.0730, 10.7421, 1.8109 Background



This preview shows how black text looks on a background with the HunterLab color 59.0730, 10.7421, 1.8109.



This preview shows how white text looks on a background with the HunterLab color 59.0730, 10.7421,



# Color Blindness Simulation

Color vision deficiency is a very complex topic, and I could not describe the different causes any better than Wikipedia does, so if you want to learn more, you should check out their [article about color blindness](#).

## Dichromacy



### Original Color

59.0730, 10.7421, 1.8109

### Protanopia

59.2427, -1.3426, -0.5938

### Deuteranopia

59.2030, 4.0274, 2.3185



## Tritanopia

59.0427, 10.5836, 2.2416

# Trichromacy



## Original Color

59.0730, 10.7421, 1.8109

## Protanomaly

59.1313, 2.5781, 0.3084

## Deuteranomaly

59.0390, 6.3501, 2.1630

## Tritanomaly

59.0427, 10.5836, 2.2416

# Monochromacy



## Original Color

59.0730, 10.7421, 1.8109

## Achromatopsia

60.1088, -3.2073, 3.2658

## Achromatomaly

59.7664, 1.5625, 2.9452

# CSS Examples

## Text

The CSS property to change the color of the text to HunterLab 59.0730, 10.7421, 1.8109 is called "color". The color property can be set on classes, ids or directly on the HTML element.

This example shows how text in the color `rgb(186, 150, 163)` looks like.

```
.text, #text, p{  
    color:rgb(186, 150, 163)  
}
```

If you want to add a text shadow in that color use the text-shadow property, you can generate a text shadow directly with our [CSS Text Shadow Generator](#).

Here you see how black text with a 4 pixel rgb(186, 150, 163) colored shadow looks like.

```
.shadow{ text-shadow: 4px 4px 2px rgb(186, 150, 163) }
```

## Border

The CSS property to change the border of an element to HunterLab 59.0730, 10.7421, 1.8109 is called "border". The border property can be set on classes, ids or directly on the HTML element.

This example shows the color as border, it can be applied via the CSS property "border" or "border-color".

```
.border, #border, table{ border:4px solid rgb(186, 150, 163) }
```



If only the border color should be changed use the property `border-color`.

```
.border{ border-color:rgb(186, 150, 163) }
```

If you want to add a box shadow in that color use:

Here you see how a box with a 4 pixel `rgb(186, 150, 163)` colored shadow looks like.

```
.boxshadow{ -moz-box-shadow:4px 4px 4px  
4px rgb(186, 150, 163); -webkit-box-  
shadow:4px 4px 4px 4px rgb(186, 150, 163);  
box-shadow:4px 4px 4px 4px rgb(186, 150,  
163) }
```

# Background

The CSS property to change the background color of an element to HunterLab 59.0730, 10.7421, 1.8109 is called "background". The background property can be set on classes, ids or directly on the HTML element.

```
.background, #background, body{  
background: rgb(186, 150, 163) }
```

If only the background color should be changed can be used:

```
.background{ background-color: rgb(186,  
150, 163) }
```

This example shows the color as background, it is applied via the CSS property "background".

To optimize and compress your CSS code, you can use our [online CSS compressor and optimizer](#) based on csstidy. If you want to create a linear or radial gradient as background or border, check our [CSS Gradient Generator](#).

Hey! You found this booklet interesting? Support Converting Colors with the new Membership Option!

The pro membership hides all ads, plus gives you double the colors in the color bucket, and more awesome pro features!

**[Learn more, Memberships starting at \\$2.50/m!](#)**

**Follow me  
on Twitter!**

@ConvertingColor