

Converting Colors

HunterLab(59.2517, 5.1930,
16.8408)

Have a look what the booklet for
HunterLab(59.2517, 5.1930,
16.8408) contains.

HunterLab(59.2517, 5.1941, 16.8501)	3
<i>Conversions</i>	4
<i>Details</i>	6
<i>Harmonies</i>	12
<i>Previews</i>	24
<i>Color Blindness Simulation</i>	28
<i>CSS Examples</i>	31

Color

**HunterLab(59.2517, 5.1941,
16.8501)**

Conversions

Conversions Part 1

Format	Color
Hex	BD997E
RGB	189, 153, 126
RGB Percent	74%, 60%, 49%
CMY	0.2588, 0.4000, 0.5059
CMYK	0.00, 0.19, 0.33, 0.26
HSL	26°, 32%, 62%
HSV	26°, 33%, 74%
XYZ	36.1434, 35.1076, 24.6102
YIQ	160.6860, 30.1230, -0.7650

Conversions

Conversions Part 2

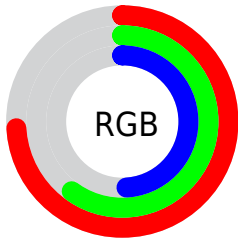
Format	Color
RYB	189, 173, 126
Decimal	12425598
CIELab	65.83, 9.51, 19.26
CIELCh	66, 21.485, 63.713
Yxy	35.1093, 0.3770, 0.3662
Android (android.graphics.Color)	4290615678 (0xFFBD997E)
YUV	160.6860, -17.1002, 24.8314
Hunter-Lab	59.2517, 5.1941, 16.8501

Details

The HunterLab color **59.2517, 5.1941, 16.8501** is a light color, and the websafe version is hex **CC9966**. A complement of this color would be **58.2661, -7.8862, -13.2250**, and the grayscale version is **59.6309, -3.1818, 3.2399**.

A 20% lighter version of the original color is **82.1420, 5.0098, 19.9201**, and **38.8676, 5.1058, 13.3291** is the 20% darker color. If you saturate the color by 10%, you get **55.9374, 8.5291, 19.8444**, and if you desaturate by 10%, it is **62.7223, 2.1641, 13.4025**.

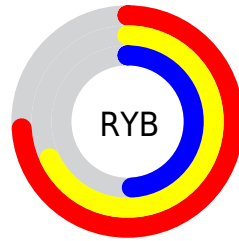
Distribution



Red (74%)

Green (60%)

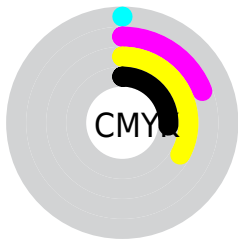
Blue (49%)



Red (74%)

Yellow (68%)

Blue (49%)

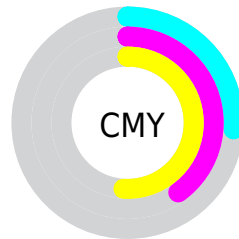


Cyan (0%)

Magenta (19%)

Yellow (33%)

Black (26%)



Cyan (26%)

Magenta (40%)

Yellow (51%)

Brightness & Saturation Gradients

These gradients show how the HunterLab color 59.2517, 5.1941, 16.8501 changes by changing the brightness by 10 percent. The first figure shows a shift by +10% for each color and the second figure -10%.

Similar to the brightness gradients but the following saturation gradients show a change of the HunterLab color 59.2517, 5.1941, 16.8501 by changing the saturation by 10% instead.

■ 59.2517, 5.1941,
16.8501

■ 59.2517, 5.1941,
16.8501

180.2915, 2.3110,
31.0725

■ 48.7310, 5.2558,
15.1667

■ 82.2527, 4.8800,
20.1071

■ 38.9180, 5.2484,
13.4247

■ 94.6612, 4.6432,
21.6991

■ 29.8697, 5.1588,
11.6004

■ 107.6376, 4.3582,
23.2762

■ 21.6572, 4.9722,
9.6554

121.1581, 4.0283,
24.8430

■ 14.3762, 4.6661,
7.7461

135.2016, 3.6564,
26.4034

■ 8.0363, 4.7301,
5.6254

149.7494, 3.2448,

0.0000, NaN, NaN

27.9603

0.0000, NaN, NaN

164.7845, 2.7958,
29.5160

0.0000, NaN, NaN

■ 59.2517, 5.1941,
16.8501

■ 59.2517, 5.1941,
16.8501

■ 55.9374, 8.5291,
19.8444

■ 62.7223, 2.1641,
13.4025

■ 52.7911, 12.1884,
22.3247

■ 66.3305, -0.5727,
9.5525

■ 49.8317, 16.1716,
24.2318

■ 70.0652, -3.0400,
5.3483

■ 47.0780, 20.4642,
25.5097

■ 73.9151, -5.2603,
0.8312

■ 44.5490, 25.0271,
26.1173

■ 77.8703, -7.2556,
-3.9633

■ 42.2625, 29.7873,
26.0480

■ 81.9222, -9.0467,
-9.0048

■ 40.8723, 32.9802,
25.7627

■ 85.9386, -11.3453,
-12.5146

■ 89.4447, -16.7958,
-7.8910

■ 93.0219, -22.1668,
-3.3692

Harmonies

Analogous

The Analogous color harmony consists of three colors that are next to each other on the color wheel.



59.2531, 12.9027, 12.1275



59.2517, 5.1941, 16.8501



59.2531, -4.3497, 18.1475

Triad

The Triadic color harmony groups three colors that are evenly spaced from another and form a triangle on the color wheel.



59.2531, 5.1919, 16.8509



59.2531, -20.4041, 2.0825



59.2531, 7.3795, -13.2293

Complementary

The Complementary color scheme is a pair of colors which are on the opposite of each other on the color wheel.



59.2517, 5.1941, 16.8501



58.2661, -7.8862, -13.2250

Split Complementary

Split-complementary colors differ from the complementary color scheme. The scheme consists of three colors, the original color and two neighbors of the complement color.



59.2531, -1.9705, -16.9963



59.2517, 5.1941, 16.8501



59.2531, -17.6839, -7.3164

Square

The Square scheme is like the rectangle color scheme, but the four colors are evenly spaced on the color wheel.



59.2531, 5.1919, 16.8509



59.2531, -18.7515, 10.4540



59.2531, -11.0825, -14.6783



59.2531, 14.2209, -5.0471

Rectangle

The Rectangle color scheme consists of four colors that form a rectangle on the color wheel.



59.2517, 5.1941, 16.8501



59.2531, -10.3727, 17.0974



59.2531, -11.0825, -14.6783



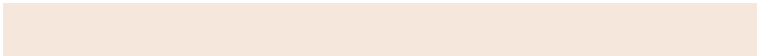
59.2531, 4.4051, -15.1079

Sweetspot

The Sweet Spot groups the original color and five complimentary colors.



59.2531, 5.1919, 16.8509



90.3371, -1.8516, 11.0475



53.2694, 24.1798, -5.1886



41.5690, -0.6378, 5.4824



97.7295, -5.2146, 5.3098



44.2712, -2.3622, 2.4053

Same Dimension

The Same Dimension uses a secret algorithm to generate beautiful new colors.



59.2531, 5.1919, 16.8509



76.0335, 10.1699, 25.5429



68.1927, -9.8153, 24.6861



31.9229, -0.7467, 3.7284



33.7422, 26.5096, 21.2559



7.5892, 3.1481, 4.7316

Inverse Universe

The Inverse Universe completely reimagines the original color for something new.



58.2661, -7.8862, -13.2250



74.4332, -10.8858, -23.0089



49.4065, 7.2561, -27.2040



31.7896, -2.5319, -0.3602



31.3698, 1.2334, -41.8721



7.1617, -1.3142, -6.1146

Previews

White Background



This preview shows how the HunterLab color 59.2517, 5.1941, 16.8501 looks on a white background.

Color Contrast Check

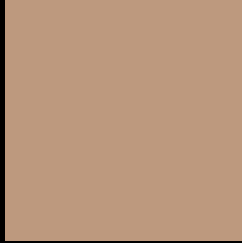
Large Text (above 18pt) WCAG AA × Fail

Any Text WCAG AA × Fail

Large Text (above 18pt) WCAG AAA × Fail

Any Text WCAG AAA × Fail

Black Background



This preview shows how the HunterLab color 59.2517, 5.1941, 16.8501 looks on a black background.

Color Contrast Check

Large Text (above 18pt) WCAG AA ✓ Pass

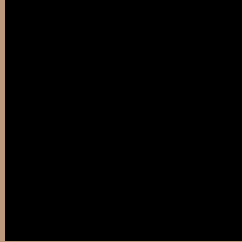
Any Text WCAG AA ✓ Pass

Large Text (above 18pt) WCAG AAA ✓ Pass

Any Text WCAG AAA ✓ Pass

If you want to check with other color combinations, try the [Color Contrast Checker](#).

HunterLab 59.2517, 5.1941, 16.8501 Background



This preview shows how black text looks on a background with the HunterLab color 59.2517, 5.1941, 16.8501.



This preview shows how white text looks on a background with the HunterLab color 59.2517, 5.1941,

Color Blindness Simulation

Color vision deficiency is a very complex topic, and I could not describe the different causes any better than Wikipedia does, so if you want to learn more, you should check out their [article about color blindness](#).

Dichromacy



Original Color

59.2517, 5.1941, 16.8501

Protanopia

59.3908, -4.4187, 15.7853

Deuteranopia

59.3147, 3.9799, 16.8887



Tritanopia

59.2075, 13.7458, 3.4200

Trichromacy



Original Color

59.2517, 5.1941, 16.8501

Protanomaly

59.1773, -0.7486, 15.9907

Deuteranomaly

59.4213, 4.3376, 16.9960

Tritanomaly

59.2936, 10.6026, 8.7068

Monochromacy



Original Color

59.2517, 5.1941, 16.8501

Achromatopsia

59.6993, -3.1854, 3.2436

Achromatomaly

59.3715, -0.5768, 8.5958

CSS Examples

Text

The CSS property to change the color of the text to HunterLab 59.2517, 5.1941, 16.8501 is called "color". The color property can be set on classes, ids or directly on the HTML element.

This example shows how text in the color `rgb(189, 153, 126)` looks like.

```
.text, #text, p{  
    color:rgb(189, 153, 126)  
}
```

If you want to add a text shadow in that color use the text-shadow property, you can generate a text shadow directly with our [CSS Text Shadow Generator](#).

Here you see how black text with a 4 pixel rgb(189, 153, 126) colored shadow looks like.

```
.shadow{ text-shadow: 4px 4px 2px rgb(189, 153, 126) }
```

Border

The CSS property to change the border of an element to HunterLab 59.2517, 5.1941, 16.8501 is called "border". The border property can be set on classes, ids or directly on the HTML element.

This example shows the color as border, it can be applied via the CSS property "border" or "border-color".

```
.border, #border, table{ border:4px solid rgb(189, 153, 126) }
```


If only the border color should be changed use the property `border-color`.

```
.border{ border-color:rgb(189, 153, 126) }
```

If you want to add a box shadow in that color use:

Here you see how a box with a 4 pixel `rgb(189, 153, 126)` colored shadow looks like.

```
.boxshadow{ -moz-box-shadow:4px 4px 4px  
4px rgb(189, 153, 126); -webkit-box-  
shadow:4px 4px 4px 4px rgb(189, 153, 126);  
box-shadow:4px 4px 4px 4px rgb(189, 153,  
126) }
```

Background

The CSS property to change the background color of an element to HunterLab 59.2517, 5.1941, 16.8501 is called "background". The background property can be set on classes, ids or directly on the HTML element.

```
.background, #background, body{  
background: rgb(189, 153, 126) }
```

If only the background color should be changed can be used:

```
.background{ background-color: rgb(189,  
153, 126) }
```

This example shows the color as background, it is applied via the CSS property "background".

To optimize and compress your CSS code, you can use our [online CSS compressor and optimizer](#) based on csstidy. If you want to create a linear or radial gradient as background or border, check our [CSS Gradient Generator](#).

Hey! You found this booklet interesting? Support Converting Colors with the new Membership Option!

The pro membership hides all ads, plus gives you double the colors in the color bucket, and more awesome pro features!

[Learn more, Memberships starting at \\$2.50/m!](#)

**Follow me
on Twitter!**

@ConvertingColor