

Converting Colors

HunterLab(59.2534, 14.7203,
18.0189)

Have a look what the booklet for
HunterLab(59.2534, 14.7203,
18.0189) contains.

HunterLab(59.2534, 14.7203, 18.0189)	3
<i>Conversions</i>	4
<i>Details</i>	6
<i>Harmonies</i>	12
<i>Previews</i>	24
<i>Color Blindness Simulation</i>	28
<i>CSS Examples</i>	31

Color

**HunterLab(59.2534, 14.7203,
18.0189)**

Conversions

Conversions Part 1

Format	Color
Hex	CE927B
RGB	206, 146, 123
RGB Percent	81%, 57%, 48%
CMY	0.1922, 0.4274, 0.5176
CMYK	0.00, 0.29, 0.40, 0.19
HSL	17°, 46%, 65%
HSV	17°, 40%, 81%
XYZ	39.3077, 35.1097, 23.4440
YIQ	161.3180, 43.1430, 5.5670

Conversions

Conversions Part 2

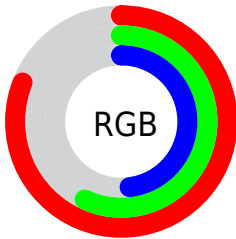
Format	Color
R _Y B	206, 155, 123
Decimal	13537915
CIE Lab	65.84, 19.78, 21.22
CIE LCh	66, 29.013, 47.007
Yxy	35.1113, 0.4017, 0.3588
Android (android.graphics.Color)	4291727995 (0xFFCE927B)
YUV	161.3180, -18.8908, 39.1861
Hunter-Lab	59.2534, 14.7203, 18.0189

Details

The HunterLab color **59.2534, 14.7203, 18.0189** is a light color, and the websafe version is hex **CC9999**. A complement of this color would be **65.2170, -14.9354, -13.1608**, and the grayscale version is **59.8931, -3.1957, 3.2541**.

A 20% lighter version of the original color is **81.0575, 11.7064, 20.1081**, and **38.9395, 13.9371, 14.3740** is the 20% darker color. If you saturate the color by 10%, you get **55.0932, 20.2372, 20.6620**, and if you desaturate by 10%, it is **63.6998, 9.5356, 15.0079**.

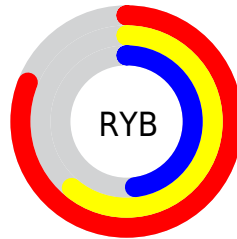
Distribution



Red (81%)

Green (57%)

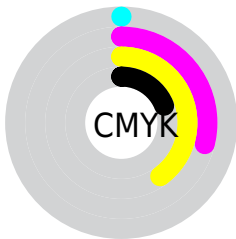
Blue (48%)



Red (81%)

Yellow (61%)

Blue (48%)

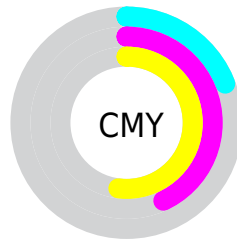


Cyan (0%)

Magenta (29%)

Yellow (40%)

Black (19%)



Cyan (19%)

Magenta (43%)

Yellow (52%)

Brightness & Saturation Gradients

These gradients show how the HunterLab color 59.2534, 14.7203, 18.0189 changes by changing the brightness by 10 percent. The first figure shows a shift by +10% for each color and the second figure -10%.

Similar to the brightness gradients but the following saturation gradients show a change of the HunterLab color 59.2534, 14.7203, 18.0189 by changing the saturation by 10% instead.

■ 59.2534, 14.7203,
18.0189

■ 59.2534, 14.7203,
18.0189

180.2941, 15.5431,
33.0762

■ 48.7326, 14.2802,
16.2114

■ 82.2546, 15.3402,
21.4981

■ 38.9195, 13.7441,
14.3337

■ 94.6632, 15.5416,
23.1910

■ 29.8711, 13.0948,
12.3592

■ 107.6397, 15.6784,
24.8634

■ 21.6584, 12.3135,
10.2451

121.1603, 15.7554,
26.5209

■ 14.3772, 11.3771,
8.3109

135.2039, 15.7770,
28.1678

■ 8.0374, 10.8889,
5.6262

149.7518, 15.7468,

0.0000, INF, NaN

29.8076

0.0000, NaN, NaN

164.7869, 15.6679,
31.4430

0.0000, NaN, NaN

■ 59.2534, 14.7203,
18.0189

■ 59.2534, 14.7203,
18.0189

■ 55.0932, 20.2372,
20.6620

■ 63.6998, 9.5356,
15.0079

■ 51.2549, 26.0667,
22.8511

■ 68.3932, 4.6898,
11.6959

■ 47.7842, 32.1330,
24.4937

■ 73.3055, 0.1623,
8.1389

■ 44.7278, 38.2987,
25.4989

■ 78.4114, -4.0729,
4.3803

■ 42.1301, 44.3473,
25.8053

■ 83.6898, -8.0447,
0.4538

■ 40.0718, 49.7959,
25.5638

■ 89.1229, -11.7821,
-3.6149

■ 94.2663, -17.7155,
-1.7284

■ 95.8446, -20.1082,
0.1821

Harmonies

Analogous

The Analogous color harmony consists of three colors that are next to each other on the color wheel.



59.2548, 22.4717, 9.7206



59.2534, 14.7203, 18.0189



59.2548, 2.5164, 21.9196

Triad

The Triadic color harmony groups three colors that are evenly spaced from another and form a triangle on the color wheel.



59.2548, 14.7176, 18.0198



59.2548, -25.4508, 8.2896



59.2548, 4.2666, -24.0687

Complementary

The Complementary color scheme is a pair of colors which are on the opposite of each other on the color wheel.



59.2534, 14.7203, 18.0189



65.2170, -14.9354, -13.1608

Split Complementary

Split-complementary colors differ from the complementary color scheme. The scheme consists of three colors, the original color and two neighbors of the complement color.



59.2548, -8.6398, -24.6831



59.2534, 14.7203, 18.0189



59.2548, -25.0698, -4.1000

Square

The Square scheme is like the rectangle color scheme, but the four colors are evenly spaced on the color wheel.



59.2548, 14.7176, 18.0198



59.2548, -20.2395, 17.1662



59.2548, -19.1498, -16.7610



59.2548, 16.0930, -15.2282

Rectangle

The Rectangle color scheme consists of four colors that form a rectangle on the color wheel.



59.2534, 14.7203, 18.0189



59.2548, -6.1606, 22.1920



59.2548, -19.1498, -16.7610



59.2548, -0.1084, -25.3016

Sweetspot

The Sweet Spot groups the original color and five complimentary colors.



59.2548, 14.7176, 18.0198



92.1272, 1.2482, 11.2219



55.4465, 35.5225, -13.6249



42.2357, 0.9242, 5.4731

0.0000, NaN, NaN



46.2646, -2.4686, 2.5136

Same Dimension

The Same Dimension uses a secret algorithm to generate beautiful new colors.



59.2548, 14.7176, 18.0198



70.9972, 24.5389, 25.7673



70.6663, -5.6496, 27.7228



34.2219, -0.1071, 3.6227



31.6690, 38.4152, 20.1868



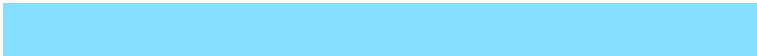
8.0445, 6.4189, 5.0693

Inverse Universe

The Inverse Universe completely reimagines the original color for something new.



65.2170, -14.9354, -13.1608



79.9542, -20.3988, -21.2461



53.0310, 4.9328, -32.5205



34.9010, -3.4358, 0.0911



40.1639, -10.0502, -28.5059



9.7749, -3.2120, -5.2841

Previews

White Background



This preview shows how the HunterLab color 59.2534, 14.7203, 18.0189 looks on a white background.

Color Contrast Check

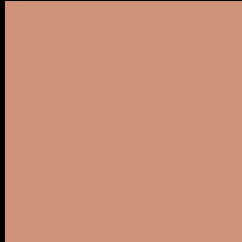
Large Text (above 18pt) WCAG AA × Fail

Any Text WCAG AA × Fail

Large Text (above 18pt) WCAG AAA × Fail

Any Text WCAG AAA × Fail

Black Background



This preview shows how the HunterLab color 59.2534, 14.7203, 18.0189 looks on a black background.

Color Contrast Check

Large Text (above 18pt) WCAG AA ✓ Pass

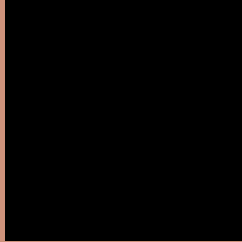
Any Text WCAG AA ✓ Pass

Large Text (above 18pt) WCAG AAA ✓ Pass

Any Text WCAG AAA ✓ Pass

If you want to check with other color combinations, try the [Color Contrast Checker](#).

HunterLab 59.2534, 14.7203, 18.0189 Background



This preview shows how black text looks on a background with the HunterLab color 59.2534, 14.7203, 18.0189.



This preview shows how white text looks on a background with the HunterLab color 59.2534, 14.7203, 18.0189.

Color Blindness Simulation

Color vision deficiency is a very complex topic, and I could not describe the different causes any better than Wikipedia does, so if you want to learn more, you should check out their [article about color blindness](#).

Dichromacy



Original Color

59.2534, 14.7203, 18.0189

Protanopia

59.3908, -4.4187, 15.7853

Deuteranopia

59.4434, 4.2413, 18.3381



Tritanopia

59.3306, 21.6805, 6.8224

Trichromacy



Original Color

59.2534, 14.7203, 18.0189

Protanomaly

59.1965, 2.1873, 16.4045

Deuteranomaly

59.2794, 7.9305, 18.2509

Tritanomaly

59.1674, 19.2958, 11.1523

Monochromacy



Original Color

59.2534, 14.7203, 18.0189

Achromatopsia

59.6993, -3.1854, 3.2436

Achromatomaly

59.3554, 2.2451, 9.0405

CSS Examples

Text

The CSS property to change the color of the text to HunterLab 59.2534, 14.7203, 18.0189 is called "color". The color property can be set on classes, ids or directly on the HTML element.

This example shows how text in the color `rgb(206, 146, 123)` looks like.

```
.text, #text, p{  
    color:rgb(206, 146, 123)  
}
```

If you want to add a text shadow in that color use the text-shadow property, you can generate a text shadow directly with our [CSS Text Shadow Generator](#).

Here you see how black text with a 4 pixel rgb(206, 146, 123) colored shadow looks like.

```
.shadow{ text-shadow: 4px 4px 2px rgb(206, 146, 123) }
```

Border

The CSS property to change the border of an element to HunterLab 59.2534, 14.7203, 18.0189 is called "border". The border property can be set on classes, ids or directly on the HTML element.

This example shows the color as border, it can be applied via the CSS property "border" or "border-color".

```
.border, #border, table{ border:4px solid rgb(206, 146, 123) }
```


If only the border color should be changed use the property `border-color`.

```
.border{ border-color:rgb(206, 146, 123) }
```

If you want to add a box shadow in that color use:

Here you see how a box with a 4 pixel `rgb(206, 146, 123)` colored shadow looks like.

```
.boxshadow{ -moz-box-shadow:4px 4px 4px 4px rgb(206, 146, 123); -webkit-box-shadow:4px 4px 4px 4px rgb(206, 146, 123); box-shadow:4px 4px 4px 4px rgb(206, 146, 123) }
```

Background

The CSS property to change the background color of an element to HunterLab 59.2534, 14.7203, 18.0189 is called "background". The background property can be set on classes, ids or directly on the HTML element.

```
.background, #background, body{  
background: rgb(206, 146, 123) }
```

If only the background color should be changed can be used:

```
.background{ background-color: rgb(206,  
146, 123) }
```

This example shows the color as background, it is applied via the CSS property "background".

To optimize and compress your CSS code, you can use our [online CSS compressor and optimizer](#) based on csstidy. If you want to create a linear or radial gradient as background or border, check our [CSS Gradient Generator](#).

Hey! You found this booklet interesting? Support Converting Colors with the new Membership Option!

The pro membership hides all ads, plus gives you double the colors in the color bucket, and more awesome pro features!

[Learn more, Memberships starting at \\$2.50/m!](#)

**Follow me
on Twitter!**

@ConvertingColor