

Converting Colors

HunterLab(59.2722, 19.9212,
10.9569)

Have a look what the booklet for
HunterLab(59.2722, 19.9212,
10.9569) contains.

HunterLab(59.3156, 19.8054, 10.9213)	3
<i>Conversions</i>	4
<i>Details</i>	6
<i>Harmonies</i>	12
<i>Previews</i>	24
<i>Color Blindness Simulation</i>	28
<i>CSS Examples</i>	31

Color

**HunterLab(59.3156, 19.8054,
10.9213)**

Conversions

Conversions Part 1

Format	Color
Hex	D18F8F
RGB	209, 143, 143
RGB Percent	82%, 56%, 56%
CMY	0.1804, 0.4392, 0.4392
CMYK	0.00, 0.32, 0.32, 0.18
HSL	0°, 42%, 69%
HSV	0°, 32%, 82%
XYZ	41.0749, 35.1834, 30.6128
YIQ	162.7340, 39.3360, 13.9920

Conversions

Conversions Part 2

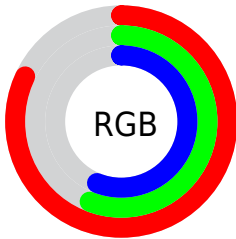
Format	Color
RYB	209, 143, 143
Decimal	13733775
CIELab	65.89, 25.04, 10.17
CIElCh	66, 27.026, 22.107
Yxy	35.1851, 0.3843, 0.3292
Android (android.graphics.Color)	4291923855 (0xFFD18F8F)
YUV	162.7340, -9.7289, 40.5753
Hunter-Lab	59.3156, 19.8054, 10.9213

Details

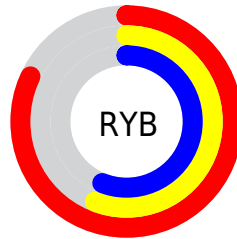
The HunterLab color **59.3156, 19.8054, 10.9213** is a light color, and the websafe version is hex **CC9999**. A complement of this color would be **74.8613, -22.1923, -2.0340**, and the grayscale version is **60.4381, -3.2248, 3.2837**.

A 20% lighter version of the original color is **80.7612, 16.2218, 11.2690**, and **39.0089, 18.4008, 8.6191** is the 20% darker color. If you saturate the color by 10%, you get **53.7664, 28.0362, 13.2813**, and if you desaturate by 10%, it is **65.3825, 11.8329, 8.6887**.

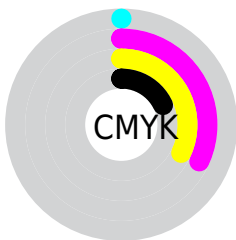
Distribution



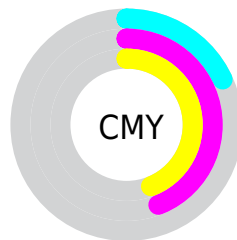
- Red (82%)
- Green (56%)
- Blue (56%)



- Red (82%)
- Yellow (56%)
- Blue (56%)



- Cyan (0%)
- Magenta (32%)
- Yellow (32%)
- Black (18%)



- Cyan (18%)
- Magenta (44%)
- Yellow (44%)

Brightness & Saturation Gradients

These gradients show how the HunterLab color 59.3156, 19.8054, 10.9213 changes by changing the brightness by 10 percent. The first figure shows a shift by +10% for each color and the second figure -10%.

Similar to the brightness gradients but the following saturation gradients show a change of the HunterLab color 59.3156, 19.8054, 10.9213 by changing the saturation by 10% instead.

■ 59.3156, 19.8054,
10.9213

■ 59.3156, 19.8054,
10.9213

180.3842, 22.4531,
21.4013

■ 48.7909, 19.1249,
9.7906

■ 82.3240, 20.8791,
13.1877

■ 38.9736, 18.3385,
8.6517

■ 94.7359, 21.2953,
14.3288

■ 29.9206, 17.4293,
7.4956

107.7156, 21.6396,
15.4786

■ 21.7029, 16.3803,
6.3058

121.2392, 21.9176,
16.6387

■ 14.4160, 15.1768,
5.0526

135.2858, 22.1340,
17.8103

■ 8.0767, 14.4731,
5.6537

149.8365, 22.2932,

0.0000, INF, NaN

18.9942

0.0000, NaN, NaN

164.8744, 22.3985,
20.1910

0.0000, NaN, NaN

■ 59.3156, 19.8054,
10.9213

■ 59.3156, 19.8054,
10.9213

■ 53.7664, 28.0362,
13.2813

■ 65.3825, 11.8329,
8.6887

■ 48.8331, 36.3636,
15.7162

■ 71.8785, 4.1872,
6.5948

■ 44.6338, 44.4470,
18.1220

■ 78.7376, -3.1333,
4.6360

■ 41.2863, 51.7440,
20.3257

■ 85.9064, -10.1555,
2.7995

■ 38.8815, 57.5733,
22.1052

■ 93.3427, -16.9168,
1.0697

■ 37.4405, 61.3468,
23.2652

■ 96.0705, -19.2882,
0.4732

■ 36.8180, 63.0498,
23.7908

Harmonies

Analogous

The Analogous color harmony consists of three colors that are next to each other on the color wheel.



59.3170, 21.5085, 0.1292



59.3156, 19.8054, 10.9213



59.3170, 11.7070, 18.0924

Triad

The Triadic color harmony groups three colors that are evenly spaced from another and form a triangle on the color wheel.



59.3170, 19.8028, 10.9223



59.3170, -20.3299, 15.2086



59.3170, -6.3091, -22.9424

Complementary

The Complementary color scheme is a pair of colors which are on the opposite of each other on the color wheel.



59.3156, 19.8054, 10.9213



74.8613, -22.1923, -2.0340

Split Complementary

Split-complementary colors differ from the complementary color scheme. The scheme consists of three colors, the original color and two neighbors of the complement color.



59.3170, -16.7082, -16.8772



59.3156, 19.8054, 10.9213



59.3170, -24.3720, 6.1696

Square

The Square scheme is like the rectangle color scheme, but the four colors are evenly spaced on the color wheel.



59.3170, 19.8028, 10.9223



59.3170, -11.6192, 20.2019



59.3170, -23.1009, -5.6570



59.3170, 5.7841, -20.9699

Rectangle

The Rectangle color scheme consists of four colors that form a rectangle on the color wheel.



59.3156, 19.8054, 10.9213



59.3170, 4.1021, 20.5741



59.3170, -23.1009, -5.6570



59.3170, -10.1043, -21.7397

Sweetspot

The Sweet Spot groups the original color and five complimentary colors.



59.3170, 19.8028, 10.9223



92.1039, 2.9377, 7.6366



61.4850, 30.6659, -19.7446



42.0360, 1.9921, 3.7037

0.0000, NaN, NaN



46.2646, -2.4686, 2.5136

Same Dimension

The Same Dimension uses a secret algorithm to generate beautiful new colors.



59.3170, 19.8028, 10.9223



69.4421, 31.8448, 15.6902



68.2565, 2.8821, 19.5365



34.3633, 1.2052, 2.8857



28.9103, 49.5076, 18.6811



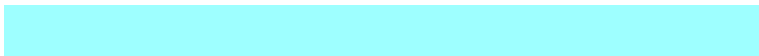
6.8365, 11.7055, 4.4175

Inverse Universe

The Inverse Universe completely reimagines the original color for something new.



74.8613, -22.1923, -2.0340



92.7444, -31.5650, -3.8851



64.4159, -6.4247, -15.9412



36.6155, -4.8055, 1.0333



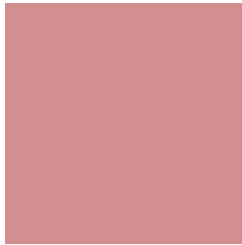
55.6332, -29.4916, -5.8726



13.1552, -6.9738, -1.3884

Previews

White Background



This preview shows how the HunterLab color 59.3156, 19.8054, 10.9213 looks on a white background.

Color Contrast Check

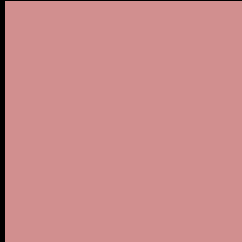
Large Text (above 18pt) WCAG AA × Fail

Any Text WCAG AA × Fail

Large Text (above 18pt) WCAG AAA × Fail

Any Text WCAG AAA × Fail

Black Background



This preview shows how the HunterLab color 59.3156, 19.8054, 10.9213 looks on a black background.

Color Contrast Check

Large Text (above 18pt) WCAG AA ✓ Pass

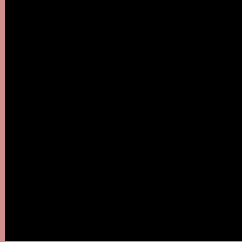
Any Text WCAG AA ✓ Pass

Large Text (above 18pt) WCAG AAA ✓ Pass

Any Text WCAG AAA ✓ Pass

If you want to check with other color combinations, try the [Color Contrast Checker](#).

HunterLab 59.3156, 19.8054, 10.9213 Background



This preview shows how black text looks on a background with the HunterLab color 59.3156, 19.8054, 10.9213.



This preview shows how white text looks on a background with the HunterLab color 59.3156, 19.8054,

Color Blindness Simulation

Color vision deficiency is a very complex topic, and I could not describe the different causes any better than Wikipedia does, so if you want to learn more, you should check out their [article about color blindness](#).

Dichromacy



Original Color

59.3156, 19.8054, 10.9213

Protanopia

59.5046, -2.8747, 7.0175

Deuteranopia

59.5257, 3.9559, 11.6492



Tritanopia

59.4261, 21.9171, 7.3641

Trichromacy



Original Color

59.3156, 19.8054, 10.9213

Protanomaly

59.2494, 4.8803, 8.1414

Deuteranomaly

59.4076, 9.2744, 11.2286

Tritanomaly

59.3444, 21.5036, 8.5365

Monochromacy



Original Color

59.3156, 19.8054, 10.9213

Achromatopsia

60.5188, -3.2291, 3.2881

Achromatomaly

59.9004, 4.5731, 5.8584

CSS Examples

Text

The CSS property to change the color of the text to HunterLab 59.3156, 19.8054, 10.9213 is called "color". The color property can be set on classes, ids or directly on the HTML element.

This example shows how text in the color `rgb(209, 143, 143)` looks like.

```
.text, #text, p{  
    color:rgb(209, 143, 143)  
}
```

If you want to add a text shadow in that color use the text-shadow property, you can generate a text shadow directly with our [CSS Text Shadow Generator](#).

Here you see how black text with a 4 pixel rgb(209, 143, 143) colored shadow looks like.

```
.shadow{ text-shadow: 4px 4px 2px rgb(209, 143, 143) }
```

Border

The CSS property to change the border of an element to HunterLab 59.3156, 19.8054, 10.9213 is called "border". The border property can be set on classes, ids or directly on the HTML element.

This example shows the color as border, it can be applied via the CSS property "border" or "border-color".

```
.border, #border, table{ border:4px solid rgb(209, 143, 143) }
```


If only the border color should be changed use the property `border-color`.

```
.border{ border-color:rgb(209, 143, 143) }
```

If you want to add a box shadow in that color use:

Here you see how a box with a 4 pixel `rgb(209, 143, 143)` colored shadow looks like.

```
.boxshadow{ -moz-box-shadow:4px 4px 4px  
4px rgb(209, 143, 143); -webkit-box-  
shadow:4px 4px 4px 4px rgb(209, 143, 143);  
box-shadow:4px 4px 4px 4px rgb(209, 143,  
143) }
```

Background

The CSS property to change the background color of an element to HunterLab 59.3156, 19.8054, 10.9213 is called "background". The background property can be set on classes, ids or directly on the HTML element.

```
.background, #background, body{  
background: rgb(209, 143, 143) }
```

If only the background color should be changed can be used:

```
.background{ background-color: rgb(209,  
143, 143) }
```

This example shows the color as background, it is applied via the CSS property "background".

To optimize and compress your CSS code, you can use our [online CSS compressor and optimizer](#) based on csstidy. If you want to create a linear or radial gradient as background or border, check our [CSS Gradient Generator](#).

Hey! You found this booklet interesting? Support Converting Colors with the new Membership Option!

The pro membership hides all ads, plus gives you double the colors in the color bucket, and more awesome pro features!

[Learn more, Memberships starting at \\$2.50/m!](#)

**Follow me
on Twitter!**

@ConvertingColor