

Converting Colors

HunterLab(59.3455, 10.4375,
8.9210)

Have a look what the booklet for
HunterLab(59.3455, 10.4375,
8.9210) contains.

HunterLab(59.2936, 10.6026, 8.7068)	3
<i>Conversions</i>	4
<i>Details</i>	6
<i>Harmonies</i>	12
<i>Previews</i>	24
<i>Color Blindness Simulation</i>	28
<i>CSS Examples</i>	31

Color

**HunterLab(59.2936, 10.6026,
8.7068)**

Conversions

Conversions Part 1

Format	Color
Hex	C09694
RGB	192, 150, 148
RGB Percent	75%, 59%, 58%
CMY	0.2471, 0.4117, 0.4196
CMYK	0.00, 0.22, 0.23, 0.25
HSL	3°, 26%, 67%
HSV	3°, 23%, 75%
XYZ	37.9899, 35.1573, 32.8007
YIQ	162.3300, 25.6740, 8.2820

Conversions

Conversions Part 2

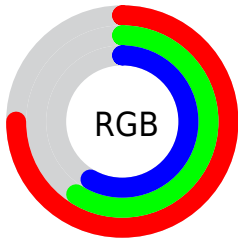
Format	Color
RYB	192, 150, 148
Decimal	12621460
CIELab	65.87, 15.42, 7.09
CIELCh	66, 16.966, 24.687
Yxy	35.1589, 0.3586, 0.3318
Android (android.graphics.Color)	4290811540 (0xFFC09694)
YUV	162.3300, -7.0647, 26.0206
Hunter-Lab	59.2936, 10.6026, 8.7068

Details

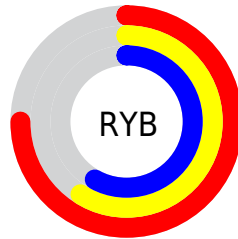
The HunterLab color **59.2936, 10.6026, 8.7068** is a light color, and the websafe version is hex **CC9999**. A complement of this color would be **68.5035, -15.2876, -1.2183**, and the grayscale version is **60.2658, -3.2156, 3.2744**.

A 20% lighter version of the original color is **82.2130, 10.9776, 10.5542**, and **38.9744, 10.1151, 6.9886** is the 20% darker color. If you saturate the color by 10%, you get **54.0388, 17.3949, 10.8919**, and if you desaturate by 10%, it is **64.9087, 4.0986, 6.5846**.

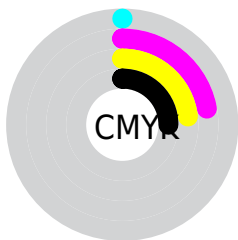
Distribution



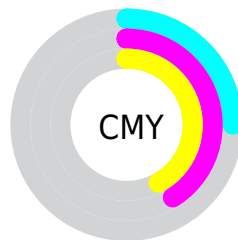
- Red (75%)
- Green (59%)
- Blue (58%)



- Red (75%)
- Yellow (59%)
- Blue (58%)



- Cyan (0%)
- Magenta (22%)
- Yellow (23%)
- Black (25%)



- Cyan (25%)
- Magenta (41%)
- Yellow (42%)

Brightness & Saturation Gradients

These gradients show how the HunterLab color 59.2936, 10.6026, 8.7068 changes by changing the brightness by 10 percent. The first figure shows a shift by +10% for each color and the second figure -10%.

Similar to the brightness gradients but the following saturation gradients show a change of the HunterLab color 59.2936, 10.6026, 8.7068 by changing the saturation by 10% instead.

■ 59.2936, 10.6026,
8.7068

■ 59.2936, 10.6026,
8.7068

180.3522, 9.8684,
17.9714

■ 48.7702, 10.3718,
7.7529

■ 82.2994, 10.8321,
10.6543

■ 38.9544, 10.0550,
6.8063

■ 94.7101, 10.8497,
11.6494

■ 29.9030, 9.6365,
5.8623

107.6887, 10.8093,
12.6606

■ 21.6871, 9.0978,
4.9117

121.2113, 10.7151,
13.6885

■ 14.4023, 8.4137,
3.9369

135.2568, 10.5710,
14.7333

■ 8.0628, 8.1081,
4.0819

149.8064, 10.3801,

0.0000, NaN, NaN

15.7953

0.0000, NaN, NaN

164.8434, 10.1451,
16.8746

0.0000, NaN, NaN

■ 59.2936, 10.6026,
8.7068

■ 59.2936, 10.6026,
8.7068

■ 54.0388, 17.3949,
10.8919

■ 64.9087, 4.0986,
6.5846

■ 49.2067, 24.4410,
13.1110

■ 70.8263, -2.1136,
4.5306

■ 44.8787, 31.6185,
15.3101

■ 77.0048, -8.0602,
2.5447

■ 41.1464, 38.6833,
17.3928

■ 83.4097, -13.7729,
0.6212

■ 38.1034, 45.2361,
19.2157

■ 90.0135, -19.2848,
-1.2474

■ 35.8277, 50.7486,
20.6083

■ 94.8401, -23.7796,
-1.1210

■ 34.3519, 54.7030,
21.4324

■ 33.7585, 56.3673,
21.7886

Harmonies

Analogous

The Analogous color harmony consists of three colors that are next to each other on the color wheel.



59.2950, 11.9826, 1.9353



59.2936, 10.6026, 8.7068



59.2950, 5.4552, 13.4219

Triad

The Triadic color harmony groups three colors that are evenly spaced from another and form a triangle on the color wheel.



59.2950, 10.6005, 8.7078



59.2950, -14.5483, 10.6644



59.2950, -4.5045, -12.2258

Complementary

The Complementary color scheme is a pair of colors which are on the opposite of each other on the color wheel.



59.2936, 10.6026, 8.7068



68.5035, -15.2876, -1.2183

Split Complementary

Split-complementary colors differ from the complementary color scheme. The scheme consists of three colors, the original color and two neighbors of the complement color.



59.2950, -11.3231, -9.1760



59.2936, 10.6026, 8.7068



59.2950, -16.9335, 4.4914

Square

The Square scheme is like the rectangle color scheme, but the four colors are evenly spaced on the color wheel.



59.2950, 10.6005, 8.7078



59.2950, -9.1062, 14.4487



59.2950, -15.7827, -2.8314



59.2950, 3.0155, -10.7326

Rectangle

The Rectangle color scheme consists of four colors that form a rectangle on the color wheel.



59.2936, 10.6026, 8.7068



59.2950, 0.7136, 15.0563



59.2950, -15.7827, -2.8314



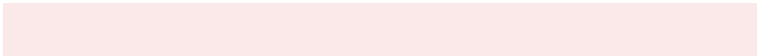
59.2950, -6.9503, -11.6876

Sweetspot

The Sweet Spot groups the original color and five complimentary colors.



59.2950, 10.6005, 8.7078



91.9500, 0.6178, 7.2472



60.1064, 18.5958, -10.9930



42.3650, 0.5202, 3.4342



98.8636, -5.2751, 5.3714



45.2661, -2.4153, 2.4594

Same Dimension

The Same Dimension uses a secret algorithm to generate beautiful new colors.



59.2950, 10.6005, 8.7078



76.5559, 18.3524, 13.0404



65.3050, -0.2080, 14.8001



31.8587, 0.8875, 2.7823



27.7481, 46.0485, 17.9044



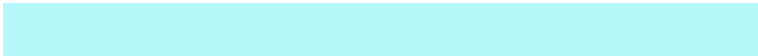
5.9882, 8.8484, 3.8448

Inverse Universe

The Inverse Universe completely reimagines the original color for something new.



68.5035, -15.2876, -1.2183



91.2737, -23.1460, -2.8594



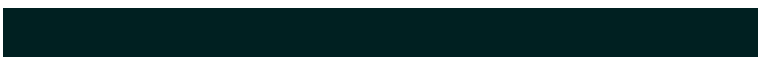
61.8908, -4.9744, -9.7241



33.6857, -4.2222, 0.8207



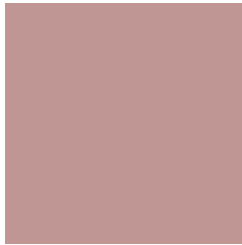
50.4507, -25.1402, -8.7886



10.6038, -5.3675, -1.6668

Previews

White Background



This preview shows how the HunterLab color 59.2936, 10.6026, 8.7068 looks on a white background.

Color Contrast Check

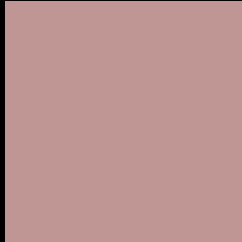
Large Text (above 18pt) WCAG AA × Fail

Any Text WCAG AA × Fail

Large Text (above 18pt) WCAG AAA × Fail

Any Text WCAG AAA × Fail

Black Background



This preview shows how the HunterLab color 59.2936, 10.6026, 8.7068 looks on a black background.

Color Contrast Check

Large Text (above 18pt) WCAG AA ✓ Pass

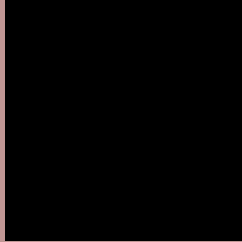
Any Text WCAG AA ✓ Pass

Large Text (above 18pt) WCAG AAA ✓ Pass

Any Text WCAG AAA ✓ Pass

If you want to check with other color combinations, try the [Color Contrast Checker](#).

HunterLab 59.2936, 10.6026, 8.7068 Background



This preview shows how black text looks on a background with the HunterLab color 59.2936, 10.6026, 8.7068.



This preview shows how white text looks on a background with the HunterLab color 59.2936, 10.6026,

8.7068.

Color Blindness Simulation

Color vision deficiency is a very complex topic, and I could not describe the different causes any better than Wikipedia does, so if you want to learn more, you should check out their [article about color blindness](#).

Dichromacy



Original Color

59.2936, 10.6026, 8.7068

Protanopia

59.5322, -2.7235, 6.6214

Deuteranopia

59.4752, 4.0950, 9.2023



Tritanopia

59.2075, 13.7458, 3.4200

Trichromacy



Original Color

59.2936, 10.6026, 8.7068

Protanomaly

59.2666, 2.1596, 7.2679

Deuteranomaly

59.3324, 6.4748, 9.0897

Tritanomaly

59.3571, 12.6264, 5.3797

Monochromacy



Original Color

59.2936, 10.6026, 8.7068

Achromatopsia

60.1088, -3.2073, 3.2658

Achromatomaly

59.8099, 1.4188, 5.2584

CSS Examples

Text

The CSS property to change the color of the text to HunterLab 59.2936, 10.6026, 8.7068 is called "color". The color property can be set on classes, ids or directly on the HTML element.

This example shows how text in the color `rgb(192, 150, 148)` looks like.

```
.text, #text, p{  
    color:rgb(192, 150, 148)  
}
```

If you want to add a text shadow in that color use the text-shadow property, you can generate a text shadow directly with our [CSS Text Shadow Generator](#).

Here you see how black text with a 4 pixel rgb(192, 150, 148) colored shadow looks like.

```
.shadow{ text-shadow: 4px 4px 2px rgb(192, 150, 148) }
```

Border

The CSS property to change the border of an element to HunterLab 59.2936, 10.6026, 8.7068 is called "border". The border property can be set on classes, ids or directly on the HTML element.

This example shows the color as border, it can be applied via the CSS property "border" or "border-color".

```
.border, #border, table{ border:4px solid rgb(192, 150, 148) }
```


If only the border color should be changed use the property `border-color`.

```
.border{ border-color:rgb(192, 150, 148) }
```

If you want to add a box shadow in that color use:

Here you see how a box with a 4 pixel `rgb(192, 150, 148)` colored shadow looks like.

```
.boxshadow{ -moz-box-shadow:4px 4px 4px  
4px rgb(192, 150, 148); -webkit-box-  
shadow:4px 4px 4px 4px rgb(192, 150, 148);  
box-shadow:4px 4px 4px 4px rgb(192, 150,  
148) }
```

Background

The CSS property to change the background color of an element to HunterLab 59.2936, 10.6026, 8.7068 is called "background". The background property can be set on classes, ids or directly on the HTML element.

```
.background, #background, body{  
background: rgb(192, 150, 148) }
```

If only the background color should be changed can be used:

```
.background{ background-color: rgb(192,  
150, 148) }
```

This example shows the color as background, it is applied via the CSS property "background".

To optimize and compress your CSS code, you can use our [online CSS compressor and optimizer](#) based on csstidy. If you want to create a linear or radial gradient as background or border, check our [CSS Gradient Generator](#).

Hey! You found this booklet interesting? Support Converting Colors with the new Membership Option!

The pro membership hides all ads, plus gives you double the colors in the color bucket, and more awesome pro features!

[Learn more, Memberships starting at \\$2.50/m!](#)

**Follow me
on Twitter!**

@ConvertingColor