

Converting Colors

HunterLab(59.4338, 2.8981,
17.6597)

Have a look what the booklet for
HunterLab(59.4338, 2.8981,
17.6597) contains.

HunterLab(59.4450, 2.8976, 17.6614)	3
<i>Conversions</i>	4
<i>Details</i>	6
<i>Harmonies</i>	12
<i>Previews</i>	24
<i>Color Blindness Simulation</i>	28
<i>CSS Examples</i>	31

Color

**HunterLab(59.4450, 2.8976,
17.6614)**

Conversions

Conversions Part 1

Format	Color
Hex	BA9B7C
RGB	186, 155, 124
RGB Percent	73%, 61%, 49%
CMY	0.2706, 0.3921, 0.5137
CMYK	0.00, 0.17, 0.33, 0.27
HSL	30°, 31%, 61%
HSV	30°, 33%, 73%
XYZ	35.6092, 35.3371, 24.0127
YIQ	160.7350, 28.4270, -3.0690

Conversions

Conversions Part 2

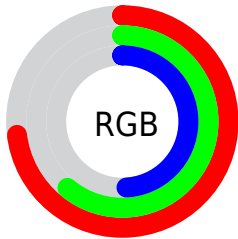
Format	Color
RYB	186, 186, 124
Decimal	12229500
CIELab	66.01, 6.95, 20.56
CIElCh	66, 21.708, 71.314
Yxy	35.3387, 0.3750, 0.3721
Android (android.graphics.Color)	4290419580 (0xFFBA9B7C)
YUV	160.7350, -18.1104, 22.1574
Hunter-Lab	59.4450, 2.8976, 17.6614

Details

The HunterLab color $59.4450, 2.8976, 17.6614$ is a light color, and the websafe version is hex $CC9966$. A complement of this color would be $55.9213, -5.6264, -14.8929$, and the grayscale version is $59.6555, -3.1831, 3.2412$.

A 20% lighter version of the original color is $82.3589, 2.5975, 20.8505$, and $39.1333, 3.2940, 14.0862$ is the 20% darker color. If you saturate the color by 10%, you get $56.5107, 5.5133, 20.7825$, and if you desaturate by 10%, it is $62.5060, 0.5811, 14.0264$.

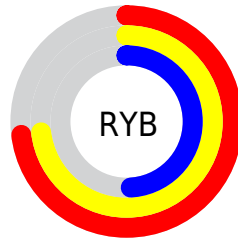
Distribution



Red (73%)

Green (61%)

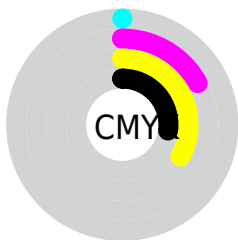
Blue (49%)



Red (73%)

Yellow (73%)

Blue (49%)

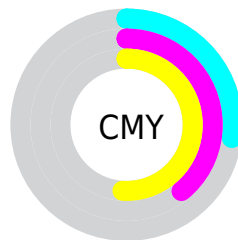


Cyan (0%)

Magenta (17%)

Yellow (33%)

Black (27%)



Cyan (27%)

Magenta (39%)

Yellow (51%)

Brightness & Saturation Gradients

These gradients show how the HunterLab color 59.4450, 2.8976, 17.6614 changes by changing the brightness by 10 percent. The first figure shows a shift by +10% for each color and the second figure -10%.

Similar to the brightness gradients but the following saturation gradients show a change of the HunterLab color 59.4450, 2.8976, 17.6614 by changing the saturation by 10% instead.

■ 59.4450, 2.8976,
17.6614

■ 59.4450, 2.8976,
17.6614

180.5716, -0.9425,
32.4349

■ 48.9121, 3.0914,
15.8967

■ 82.4683, 2.3398,
21.0644

■ 39.0860, 3.2244,
14.0661

■ 94.8871, 1.9894,
22.7229

■ 30.0236, 3.2855,
12.1442

■ 107.8734, 1.5954,
24.3628

■ 21.7954, 3.2621,
10.0899

121.4034, 1.1607,
25.9896

■ 14.4968, 3.1353,
8.1341

135.4561, 0.6876,
27.6072

■ 8.1579, 3.2790,
5.7105

150.0126, 0.1782,

0.0000, NaN, NaN

29.2190

0.0000, NaN, NaN

165.0562, -0.3657,
30.8275

0.0000, NaN, NaN

■ 59.4450, 2.8976,
17.6614

■ 59.4450, 2.8976,
17.6614

■ 56.5107, 5.5133,
20.7825

■ 62.5060, 0.5811,
14.0264

■ 53.7097, 8.4479,
23.3368

■ 65.6796, -1.4470,
9.9241

■ 51.0546, 11.7055,
25.2761

■ 68.9584, -3.2079,
5.4009

■ 48.5573, 15.2820,
26.5585

■ 72.3340, -4.7217,
0.4982

■ 46.2291, 19.1571,
27.1589

■ 75.7992, -6.0078,
-4.7468

■ 44.0802, 23.2880,
27.0844

■ 79.3474, -7.0848,
-10.3010

■ 42.7435, 26.1147,
26.7955

■ 82.9727, -7.9705,
-16.1356

■ 85.9748, -12.5377,
-12.4857

■ 89.0017, -17.2141,
-8.4835

Harmonies

Analogous

The Analogous color harmony consists of three colors that are next to each other on the color wheel.



59.4464, 11.4341, 13.7619



59.4450, 2.8976, 17.6614



59.4464, -6.7767, 18.0891

Triad

The Triadic color harmony groups three colors that are evenly spaced from another and form a triangle on the color wheel.



59.4464, 2.8954, 17.6622



59.4464, -20.3192, -0.3374



59.4464, 9.5955, -11.6294

Complementary

The Complementary color scheme is a pair of colors which are on the opposite of each other on the color wheel.



59.4450, 2.8976, 17.6614



55.9213, -5.6264, -14.8929

Split Complementary

Split-complementary colors differ from the complementary color scheme. The scheme consists of three colors, the original color and two neighbors of the complement color.



59.4464, 0.5143, -16.8356



59.4450, 2.8976, 17.6614



59.4464, -16.4969, -9.6556

Square

The Square scheme is like the rectangle color scheme, but the four colors are evenly spaced on the color wheel.



59.4464, 2.8954, 17.6622



59.4464, -19.7720, 8.6245



59.4464, -9.0114, -16.0605



59.4464, 15.4696, -2.7098

Rectangle

The Rectangle color scheme consists of four colors that form a rectangle on the color wheel.



59.4450, 2.8976, 17.6614



59.4464, -12.5270, 16.4421



59.4464, -9.0114, -16.0605



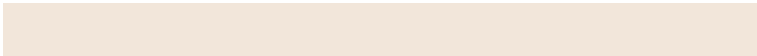
59.4464, 6.7932, -13.9315

Sweetspot

The Sweet Spot groups the original color and five complimentary colors.



59.4464, 2.8954, 17.6622



89.8086, -2.7366, 11.4908



52.1741, 22.8758, -2.6903



41.8544, -1.1212, 5.7870



97.7295, -5.2146, 5.3098



44.2712, -2.3622, 2.4053

Same Dimension

The Same Dimension uses a secret algorithm to generate beautiful new colors.



59.4464, 2.8954, 17.6622



77.1195, 6.4402, 26.9296



68.5655, -12.0889, 25.5485



31.1998, -1.0168, 3.8015



35.2724, 20.9259, 22.1010



7.4992, 2.0542, 4.6569

Inverse Universe

The Inverse Universe completely reimagines the original color for something new.



55.9213, -5.6264, -14.8929



71.3927, -7.3019, -26.0634



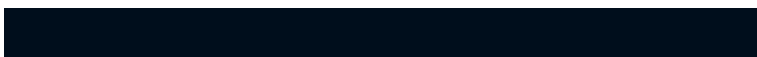
47.1657, 9.7388, -29.1622



30.7267, -2.1735, -0.5536



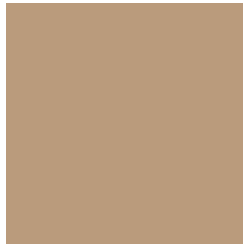
27.9293, 6.5374, -49.0215



6.3149, -0.6617, -6.4646

Previews

White Background



This preview shows how the HunterLab color 59.4450, 2.8976, 17.6614 looks on a white background.

Color Contrast Check

Large Text (above 18pt) WCAG AA × Fail

Any Text WCAG AA × Fail

Large Text (above 18pt) WCAG AAA × Fail

Any Text WCAG AAA × Fail

Black Background



This preview shows how the HunterLab color 59.4450, 2.8976, 17.6614 looks on a black background.

Color Contrast Check

Large Text (above 18pt) WCAG AA ✓ Pass

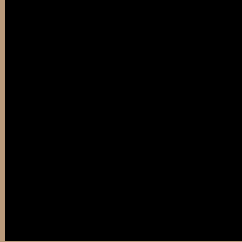
Any Text WCAG AA ✓ Pass

Large Text (above 18pt) WCAG AAA ✓ Pass

Any Text WCAG AAA ✓ Pass

If you want to check with other color combinations, try the [Color Contrast Checker](#).

HunterLab 59.4450, 2.8976, 17.6614 Background



This preview shows how black text looks on a background with the HunterLab color 59.4450, 2.8976, 17.6614.



This preview shows how white text looks on a background with the HunterLab color 59.4450, 2.8976,

17.6614.

Color Blindness Simulation

Color vision deficiency is a very complex topic, and I could not describe the different causes any better than Wikipedia does, so if you want to learn more, you should check out their [article about color blindness](#).

Dichromacy



Original Color

59.4450, 2.8976, 17.6614

Protanopia

59.4188, -4.4531, 16.8397

Deuteranopia

59.3783, 4.1072, 17.6201



Tritanopia

59.4416, 11.8146, 3.2023

Trichromacy



Original Color

59.4450, 2.8976, 17.6614

Protanomaly

59.2997, -1.9324, 17.1075

Deuteranomaly

59.2716, 3.7489, 17.5138

Tritanomaly

59.5092, 8.5210, 8.9047

Monochromacy



Original Color

59.4450, 2.8976, 17.6614

Achromatopsia

59.6993, -3.1854, 3.2436

Achromatomaly

59.5655, -1.3897, 8.7922

CSS Examples

Text

The CSS property to change the color of the text to HunterLab 59.4450, 2.8976, 17.6614 is called "color". The color property can be set on classes, ids or directly on the HTML element.

This example shows how text in the color `rgb(186, 155, 124)` looks like.

```
.text, #text, p{  
    color:rgb(186, 155, 124)  
}
```

If you want to add a text shadow in that color use the text-shadow property, you can generate a text shadow directly with our [CSS Text Shadow Generator](#).

Here you see how black text with a 4 pixel rgb(186, 155, 124) colored shadow looks like.

```
.shadow{ text-shadow: 4px 4px 2px rgb(186, 155, 124) }
```

Border

The CSS property to change the border of an element to HunterLab 59.4450, 2.8976, 17.6614 is called "border". The border property can be set on classes, ids or directly on the HTML element.

This example shows the color as border, it can be applied via the CSS property "border" or "border-color".

```
.border, #border, table{ border:4px solid rgb(186, 155, 124) }
```


If only the border color should be changed use the property `border-color`.

```
.border{ border-color:rgb(186, 155, 124) }
```

If you want to add a box shadow in that color use:

Here you see how a box with a 4 pixel `rgb(186, 155, 124)` colored shadow looks like.

```
.boxshadow{ -moz-box-shadow:4px 4px 4px  
4px rgb(186, 155, 124); -webkit-box-  
shadow:4px 4px 4px 4px rgb(186, 155, 124);  
box-shadow:4px 4px 4px 4px rgb(186, 155,  
124) }
```

Background

The CSS property to change the background color of an element to HunterLab 59.4450, 2.8976, 17.6614 is called "background". The background property can be set on classes, ids or directly on the HTML element.

```
.background, #background, body{  
background: rgb(186, 155, 124) }
```

If only the background color should be changed can be used:

```
.background{ background-color: rgb(186,  
155, 124) }
```

This example shows the color as background, it is applied via the CSS property "background".

To optimize and compress your CSS code, you can use our [online CSS compressor and optimizer](#) based on csstidy. If you want to create a linear or radial gradient as background or border, check our [CSS Gradient Generator](#).

Hey! You found this booklet interesting? Support Converting Colors with the new Membership Option!

The pro membership hides all ads, plus gives you double the colors in the color bucket, and more awesome pro features!

[Learn more, Memberships starting at \\$2.50/m!](#)

**Follow me
on Twitter!**

@ConvertingColor