

Converting Colors

HunterLab(59.4396, 36.8021,
-3.1168)

Have a look what the booklet for
HunterLab(59.4396, 36.8021,
-3.1168) contains.

HunterLab(59.4435, 36.8241, -3.1792)	3
<i>Conversions</i>	4
<i>Details</i>	6
<i>Harmonies</i>	12
<i>Previews</i>	24
<i>Color Blindness Simulation</i>	28
<i>CSS Examples</i>	31

Color

**HunterLab(59.4435, 36.8241,
-3.1792)**

Conversions

Conversions Part 1

Format	Color
Hex	E183AF
RGB	225, 131, 175
RGB Percent	88%, 51%, 69%
CMY	0.1176, 0.4863, 0.3137
CMYK	0.00, 0.42, 0.22, 0.12
HSL	332°, 61%, 70%
HSV	332°, 42%, 88%
XYZ	46.9055, 35.3353, 44.9056
YIQ	164.1220, 41.9000, 33.6120

Conversions

Conversions Part 2

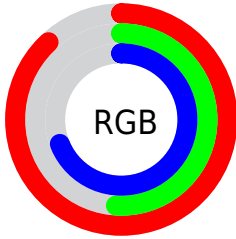
Format	Color
R_{YB}	225, 131, 175
Decimal	14779311
CIE _{Lab}	66.01, 41.63, -7.47
CIE _{LCh}	66, 42.299, 349.821
Yxy	35.3370, 0.3689, 0.2779
Android (android.graphics.Color)	4292969391 (0xFFE183AF)
YUV	164.1220, 5.3629, 53.3900
Hunter-Lab	59.4435, 36.8241, -3.1792

Details

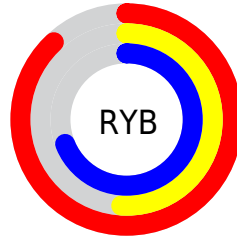
The HunterLab color $59.4435, 36.8241, -3.1792$ is a light color, and the websafe version is hex $FF99CC$. A complement of this color would be $78.7483, -36.6518, 14.9663$, and the grayscale version is $60.9472, -3.2520, 3.3114$.

A 20% lighter version of the original color is $78.8336, 27.8367, -7.7948$, and $39.1751, 34.0534, -3.6250$ is the 20% darker color. If you saturate the color by 10%, you get $54.3003, 46.5944, -3.5755$, and if you desaturate by 10%, it is $65.2247, 26.7748, -2.0605$.

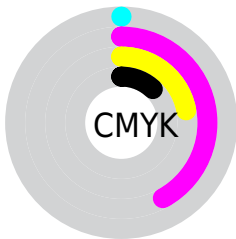
Distribution



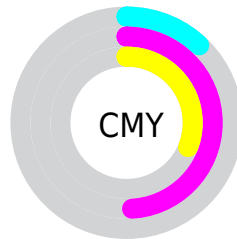
- Red (88%)
- Green (51%)
- Blue (69%)



- Red (88%)
- Yellow (51%)
- Blue (69%)



- Cyan (0%)
- Magenta (42%)
- Yellow (22%)
- Black (12%)



- Cyan (12%)
- Magenta (49%)
- Yellow (31%)

Brightness & Saturation Gradients

These gradients show how the HunterLab color 59.4435, 36.8241, -3.1792 changes by changing the brightness by 10 percent. The first figure shows a shift by +10% for each color and the second figure -10%.

Similar to the brightness gradients but the following saturation gradients show a change of the HunterLab color 59.4435, 36.8241, -3.1792 by changing the saturation by 10% instead.

■ 59.4435, 36.8241, -3.1792

■ 59.4435, 36.8241, -3.1792

180.5695, 44.9156, 0.7906

■ 48.9107, 35.4582, -3.3910

■ 82.4667, 39.2202, -2.5915

■ 39.0848, 33.9759, -3.5434

■ 94.8854, 40.2719, -2.2268

■ 30.0224, 32.3709, -3.6278

■ 107.8716, 41.2348, -1.8187

■ 21.7944, 30.6537, -3.6347

121.4015, 42.1153, -1.3699

■ 14.4959, 28.8821, -3.5516

135.4541, 42.9189, -0.8827

■ 8.1570, 28.0485, -3.5619

150.0106, 43.6506,

0.0000, INF, -NF

-0.3591

0.0000, NaN, NaN

165.0542, 44.3149,
0.1992

0.0000, NaN, NaN

■ 59.4435, 36.8241,
-3.1792

■ 59.4435, 36.8241,
-3.1792

■ 54.3003, 46.5944,
-3.5755

■ 65.2247, 26.7748,
-2.0605

■ 49.9005, 55.6546,
-3.0966

■ 71.5411, 16.7217,
-0.3727

■ 46.3527, 63.3850,
-1.6179

■ 78.3109, 6.8019,
1.7610

■ 43.7373, 69.0912,
0.8834

■ 85.4662, -2.9249,
4.2433

■ 42.0693, 72.2516,
4.2619

■ 92.9523, -12.4448,
7.0005

■ 41.2723, 73.1668,
7.3922

■ 97.0729, -16.2049,
5.8786

■ 97.3384, -14.7225,
2.0950

Harmonies

Analogous

The Analogous color harmony consists of three colors that are next to each other on the color wheel.



59.4449, 27.0925, -23.5486



59.4435, 36.8241, -3.1792



59.4449, 34.8624, 13.7695

Triad

The Triadic color harmony groups three colors that are evenly spaced from another and form a triangle on the color wheel.



59.4449, 36.8213, -3.1778



59.4449, -14.9602, 27.3728



59.4449, -24.7762, -29.5504

Complementary

The Complementary color scheme is a pair of colors which are on the opposite of each other on the color wheel.



59.4435, 36.8241, -3.1792



78.7483, -36.6518, 14.9663

Split Complementary

Split-complementary colors differ from the complementary color scheme. The scheme consists of three colors, the original color and two neighbors of the complement color.



59.4449, -33.5442, -9.6673



59.4435, 36.8241, -3.1792



59.4449, -28.3847, 21.4430

Square

The Square scheme is like the rectangle color scheme, but the four colors are evenly spaced on the color wheel.



59.4449, 36.8213, -3.1778



59.4449, 3.3591, 28.1325



59.4449, -34.7775, 9.0058



59.4449, -9.4386, -41.6232

Rectangle

The Rectangle color scheme consists of four colors that form a rectangle on the color wheel.



59.4435, 36.8241, -3.1792



59.4449, 27.2654, 21.3357



59.4449, -34.7775, 9.0058



59.4449, -28.5044, -23.3148

Sweetspot

The Sweet Spot groups the original color and five complimentary colors.



59.4449, 36.8213, -3.1778



89.1957, 9.3303, 1.6810



55.9662, 31.0079, -40.4361



40.4510, 5.4868, 0.5128

0.0000, NaN, NaN



46.2646, -2.4686, 2.5136

Same Dimension

The Same Dimension uses a secret algorithm to generate beautiful new colors.



59.4449, 36.8213, -3.1778



63.3748, 52.1252, -4.1128



58.5702, 30.0059, 14.8773



37.1575, 2.0984, 1.0745



31.3670, 55.6763, 5.0800



8.3663, 15.0516, -0.2064

Inverse Universe

The Inverse Universe completely reimagines the original color for something new.



59.4449, 36.8213, -3.1778



63.3748, 52.1252, -4.1128



79.5422, -28.2162, -4.5780



37.1575, 2.0984, 1.0745



31.3670, 55.6763, 5.0800



8.3663, 15.0516, -0.2064

Previews

White Background



This preview shows how the HunterLab color 59.4435, 36.8241, -3.1792 looks on a white background.

Color Contrast Check

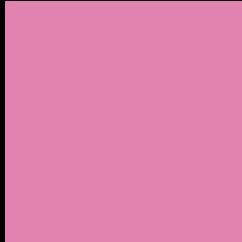
Large Text (above 18pt) WCAG AA × Fail

Any Text WCAG AA × Fail

Large Text (above 18pt) WCAG AAA × Fail

Any Text WCAG AAA × Fail

Black Background



This preview shows how the HunterLab color 59.4435, 36.8241, -3.1792 looks on a black background.

Color Contrast Check

Large Text (above 18pt) WCAG AA ✓ Pass

Any Text WCAG AA ✓ Pass

Large Text (above 18pt) WCAG AAA ✓ Pass

Any Text WCAG AAA ✓ Pass

If you want to check with other color combinations, try the [Color Contrast Checker](#).

HunterLab 59.4435, 36.8241, -3.1792 Background



This preview shows how black text looks on a background with the HunterLab color 59.4435, 36.8241, -3.1792.



This preview shows how white text looks on a background with the HunterLab color 59.4435, 36.8241, -3.1792.

-3.1792.

Color Blindness Simulation

Color vision deficiency is a very complex topic, and I could not describe the different causes any better than Wikipedia does, so if you want to learn more, you should check out their [article about color blindness](#).

Dichromacy



Original Color

59.4435, 36.8241, -3.1792

Protanopia

59.5958, 1.5876, -13.4428

Deuteranopia

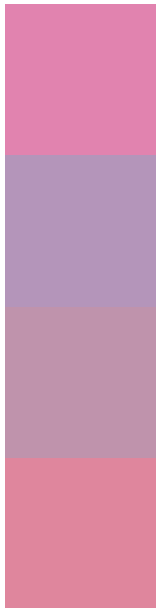
59.5717, 4.3759, -1.5615



Tritanopia

59.3407, 28.8589, 9.8998

Trichromacy



Original Color

59.4435, 36.8241, -3.1792

Protanomaly

58.9435, 13.2357, -10.1750

Deuteranomaly

59.0951, 15.4905, -2.4731

Tritanomaly

59.3064, 31.7819, 5.2113

Monochromacy



Original Color

59.4435, 36.8241, -3.1792

Achromatopsia

60.9293, -3.2510, 3.3104

Achromatomaly

59.7685, 10.5231, 0.2641

CSS Examples

Text

The CSS property to change the color of the text to HunterLab 59.4435, 36.8241, -3.1792 is called "color". The color property can be set on classes, ids or directly on the HTML element.

This example shows how text in the color `rgb(225, 131, 175)` looks like.

```
.text, #text, p{  
    color:rgb(225, 131, 175)  
}
```

If you want to add a text shadow in that color use the text-shadow property, you can generate a text shadow directly with our [CSS Text Shadow Generator](#).

Here you see how black text with a 4 pixel rgb(225, 131, 175) colored shadow looks like.

```
.shadow{ text-shadow: 4px 4px 2px rgb(225, 131, 175) }
```

Border

The CSS property to change the border of an element to HunterLab 59.4435, 36.8241, -3.1792 is called "border". The border property can be set on classes, ids or directly on the HTML element.

This example shows the color as border, it can be applied via the CSS property "border" or "border-color".

```
.border, #border, table{ border:4px solid rgb(225, 131, 175) }
```


If only the border color should be changed use the property `border-color`.

```
.border{ border-color:rgb(225, 131, 175) }
```

If you want to add a box shadow in that color use:

Here you see how a box with a 4 pixel `rgb(225, 131, 175)` colored shadow looks like.

```
.boxshadow{ -moz-box-shadow:4px 4px 4px  
4px rgb(225, 131, 175); -webkit-box-  
shadow:4px 4px 4px 4px rgb(225, 131, 175);  
box-shadow:4px 4px 4px 4px rgb(225, 131,  
175) }
```

Background

The CSS property to change the background color of an element to HunterLab 59.4435, 36.8241, -3.1792 is called "background". The background property can be set on classes, ids or directly on the HTML element.

```
.background, #background, body{  
background: rgb(225, 131, 175) }
```

If only the background color should be changed can be used:

```
.background{ background-color: rgb(225,  
131, 175) }
```

This example shows the color as background, it is applied via the CSS property "background".

To optimize and compress your CSS code, you can use our [online CSS compressor and optimizer](#) based on csstidy. If you want to create a linear or radial gradient as background or border, check our [CSS Gradient Generator](#).

Hey! You found this booklet interesting? Support Converting Colors with the new Membership Option!

The pro membership hides all ads, plus gives you double the colors in the color bucket, and more awesome pro features!

[Learn more, Memberships starting at \\$2.50/m!](#)

**Follow me
on Twitter!**

@ConvertingColor