

Converting Colors

HunterLab(59.5176, 10.6804,
4.2195)

Have a look what the booklet for
HunterLab(59.5176, 10.6804,
4.2195) contains.

HunterLab(59.5443, 10.6446, 4.2165)	3
<i>Conversions</i>	4
<i>Details</i>	6
<i>Harmonies</i>	12
<i>Previews</i>	24
<i>Color Blindness Simulation</i>	28
<i>CSS Examples</i>	31

Color

**HunterLab(59.5443, 10.6446,
4.2165)**

Conversions

Conversions Part 1

Format	Color
Hex	BD979F
RGB	189, 151, 159
RGB Percent	74%, 59%, 62%
CMY	0.2588, 0.4078, 0.3765
CMYK	0.00, 0.20, 0.16, 0.26
HSL	347°, 22%, 67%
HSV	347°, 20%, 74%
XYZ	38.3109, 35.4552, 37.6252
YIQ	163.2740, 20.0800, 10.5440

Conversions

Conversions Part 2

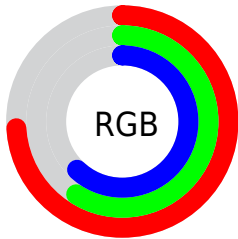
Format	Color
R_{YB}	189, 151, 159
Decimal	12425119
CIE _{Lab}	66.10, 15.46, 1.21
CIE _{LCh}	66, 15.503, 4.472
Yxy	35.4568, 0.3439, 0.3183
Android (android.graphics.Color)	4290615199 (0xFFBD979F)
YUV	163.2740, -2.1071, 22.5617
Hunter-Lab	59.5443, 10.6446, 4.2165

Details

The HunterLab color **59.5443, 10.6446, 4.2165** is a light color, and the websafe version is hex **CC9999**. A complement of this color would be **68.0526, -16.0041, 3.5645**, and the grayscale version is **60.6349, -3.2353, 3.2944**.

A 20% lighter version of the original color is **82.5291, 11.2468, 5.3467**, and **39.1765, 10.0631, 2.8453** is the 20% darker color. If you saturate the color by 10%, you get **54.1902, 18.1230, 4.8059**, and if you desaturate by 10%, it is **65.2577, 3.3513, 3.9232**.

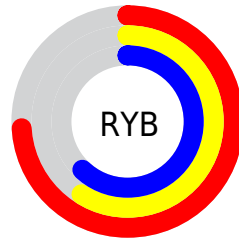
Distribution



Red (74%)

Green (59%)

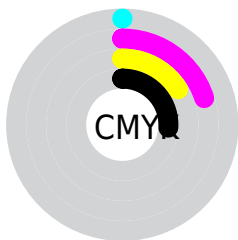
Blue (62%)



Red (74%)

Yellow (59%)

Blue (62%)

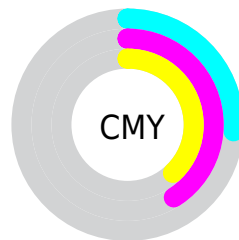


Cyan (0%)

Magenta (20%)

Yellow (16%)

Black (26%)



Cyan (26%)

Magenta (41%)

Yellow (38%)

Brightness & Saturation Gradients

These gradients show how the HunterLab color 59.5443, 10.6446, 4.2165 changes by changing the brightness by 10 percent. The first figure shows a shift by +10% for each color and the second figure -10%.

Similar to the brightness gradients but the following saturation gradients show a change of the HunterLab color 59.5443, 10.6446, 4.2165 by changing the saturation by 10% instead.

■ 59.5443, 10.6446,
4.2165

■ 59.5443, 10.6446,
4.2165

180.7153, 9.9140,
11.2567

■ 49.0051, 10.4139,
3.5813

■ 82.5790, 10.8747,
5.5856

■ 39.1724, 10.0972,
2.9790

■ 95.0031, 10.8927,
6.3147

■ 30.1026, 9.6790,
2.4125

107.9945, 10.8526,
7.0724

■ 21.8665, 9.1410,
1.8837

121.5293, 10.7589,
7.8576

■ 14.5589, 8.4582,
1.3949

135.5867, 10.6152,
8.6694

■ 8.2196, 8.0324,
1.0570

150.1478, 10.4247,

0.0000, NaN, NaN

9.5071

0.0000, NaN, NaN

165.1957, 10.1902,
10.3697

0.0000, NaN, NaN

■ 59.5443, 10.6446,
4.2165

■ 59.5443, 10.6446,
4.2165

■ 54.1902, 18.1230,
4.8059

■ 65.2577, 3.3513,
3.9232

■ 49.2585, 25.7250,
5.7392

■ 71.2724, -3.7339,
3.8752

■ 44.8317, 33.2943,
7.0620

■ 77.5470, -10.6218,
4.0321

■ 41.0035, 40.5457,
8.7942

■ 84.0472, -17.3328,
4.3596

■ 37.8716, 47.0354,
10.9034

■ 90.7458, -23.8910,
4.8298

■ 35.5182, 52.2038,
13.2745

■ 94.4190, -25.7648,
1.6895

■ 33.9797, 55.5427,
15.7034

■ 94.6356, -24.5325,
-1.3881

■ 33.1219, 57.1801,
17.8528

Harmonies

Analogous

The Analogous color harmony consists of three colors that are next to each other on the color wheel.



59.5456, 9.2802, -2.4627



59.5443, 10.6446, 4.2165



59.5456, 8.1652, 9.9558

Triad

The Triadic color harmony groups three colors that are evenly spaced from another and form a triangle on the color wheel.



59.5456, 10.6426, 4.2176



59.5456, -10.5103, 12.7417



59.5456, -8.7948, -9.3191

Complementary

The Complementary color scheme is a pair of colors which are on the opposite of each other on the color wheel.



59.5443, 10.6446, 4.2165



68.0526, -16.0041, 3.5645

Split Complementary

Split-complementary colors differ from the complementary color scheme. The scheme consists of three colors, the original color and two neighbors of the complement color.



59.5456, -13.7354, -4.3596



59.5443, 10.6446, 4.2165



59.5456, -14.6938, 8.4314

Square

The Square scheme is like the rectangle color scheme, but the four colors are evenly spaced on the color wheel.



59.5456, 10.6426, 4.2176



59.5456, -4.2120, 14.5080



59.5456, -15.8472, 2.2481



59.5456, -2.1417, -10.7751

Rectangle

The Rectangle color scheme consists of four colors that form a rectangle on the color wheel.



59.5443, 10.6446, 4.2165



59.5456, 4.7330, 12.6309



59.5456, -15.8472, 2.2481



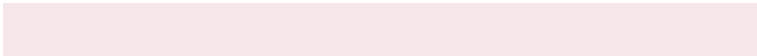
59.5456, -10.7010, -7.9807

Sweetspot

The Sweet Spot groups the original color and five complimentary colors.



59.5456, 10.6426, 4.2176



90.5137, 0.6519, 5.1884



59.6696, 13.0069, -10.8424



41.7326, 0.5894, 2.4091



97.7295, -5.2146, 5.3098



44.2712, -2.3622, 2.4053

Same Dimension

The Same Dimension uses a secret algorithm to generate beautiful new colors.



59.5456, 10.6426, 4.2176



76.5577, 18.5000, 5.9292



62.3002, 4.0126, 10.5940



30.9327, 1.3237, 1.8417



27.1856, 46.9658, 14.3920



5.4703, 9.6261, 1.5350

Inverse Universe

The Inverse Universe completely reimagines the original color for something new.



59.5456, 10.6426, 4.2176



76.5577, 18.5000, 5.9292



64.9525, -9.4679, -4.0896



30.9327, 1.3237, 1.8417



27.1856, 46.9658, 14.3920



5.4703, 9.6261, 1.5350

Previews

White Background



This preview shows how the HunterLab color 59.5443, 10.6446, 4.2165 looks on a white background.

Color Contrast Check

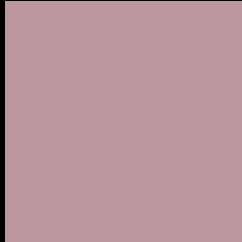
Large Text (above 18pt) WCAG AA × Fail

Any Text WCAG AA × Fail

Large Text (above 18pt) WCAG AAA × Fail

Any Text WCAG AAA × Fail

Black Background



This preview shows how the HunterLab color 59.5443, 10.6446, 4.2165 looks on a black background.

Color Contrast Check

Large Text (above 18pt) WCAG AA ✓ Pass

Any Text WCAG AA ✓ Pass

Large Text (above 18pt) WCAG AAA ✓ Pass

Any Text WCAG AAA ✓ Pass

If you want to check with other color combinations, try the [Color Contrast Checker](#).

HunterLab 59.5443, 10.6446, 4.2165 Background



This preview shows how black text looks on a background with the HunterLab color 59.5443, 10.6446, 4.2165.



This preview shows how white text looks on a background with the HunterLab color 59.5443, 10.6446,

Color Blindness Simulation

Color vision deficiency is a very complex topic, and I could not describe the different causes any better than Wikipedia does, so if you want to learn more, you should check out their [article about color blindness](#).

Dichromacy



Original Color

59.5443, 10.6446, 4.2165

Protanopia

59.6728, -1.5985, 1.8455

Deuteranopia

59.6596, 3.8797, 4.6825



Tritanopia

59.3634, 11.6218, 2.6428

Trichromacy



Original Color

59.5443, 10.6446, 4.2165

Protanomaly

59.5762, 2.3805, 2.7340

Deuteranomaly

59.5009, 6.2214, 4.5400

Tritanomaly

59.3336, 11.4657, 3.0683

Monochromacy



Original Color

59.5443, 10.6446, 4.2165

Achromatopsia

60.5188, -3.2291, 3.2881

Achromatomaly

60.1461, 1.3852, 3.3901

CSS Examples

Text

The CSS property to change the color of the text to HunterLab 59.5443, 10.6446, 4.2165 is called "color". The color property can be set on classes, ids or directly on the HTML element.

This example shows how text in the color `rgb(189, 151, 159)` looks like.

```
.text, #text, p{  
    color:rgb(189, 151, 159)  
}
```

If you want to add a text shadow in that color use the text-shadow property, you can generate a text shadow directly with our [CSS Text Shadow Generator](#).

Here you see how black text with a 4 pixel rgb(189, 151, 159) colored shadow looks like.

```
.shadow{ text-shadow: 4px 4px 2px rgb(189, 151, 159) }
```

Border

The CSS property to change the border of an element to HunterLab 59.5443, 10.6446, 4.2165 is called "border". The border property can be set on classes, ids or directly on the HTML element.

This example shows the color as border, it can be applied via the CSS property "border" or "border-color".

```
.border, #border, table{ border:4px solid rgb(189, 151, 159) }
```


If only the border color should be changed use the property border-color.

```
.border{ border-color:rgb(189, 151, 159) }
```

If you want to add a box shadow in that color use:

Here you see how a box with a 4 pixel rgb(189, 151, 159) colored shadow looks like.

```
.boxshadow{ -moz-box-shadow:4px 4px 4px  
4px rgb(189, 151, 159); -webkit-box-  
shadow:4px 4px 4px 4px rgb(189, 151, 159);  
box-shadow:4px 4px 4px 4px rgb(189, 151,  
159) }
```

Background

The CSS property to change the background color of an element to HunterLab 59.5443, 10.6446, 4.2165 is called "background". The background property can be set on classes, ids or directly on the HTML element.

```
.background, #background, body{  
background: rgb(189, 151, 159) }
```

If only the background color should be changed can be used:

```
.background{ background-color: rgb(189,  
151, 159) }
```

This example shows the color as background, it is applied via the CSS property "background".

To optimize and compress your CSS code, you can use our [online CSS compressor and optimizer](#) based on csstidy. If you want to create a linear or radial gradient as background or border, check our [CSS Gradient Generator](#).

Hey! You found this booklet interesting? Support Converting Colors with the new Membership Option!

The pro membership hides all ads, plus gives you double the colors in the color bucket, and more awesome pro features!

[Learn more, Memberships starting at \\$2.50/m!](#)

**Follow me
on Twitter!**

@ConvertingColor