

Converting Colors

HunterLab(59.5463, 5.8850,
2.5874)

Have a look what the booklet for
HunterLab(59.5463, 5.8850, 2.5874)
contains.

HunterLab(59.6951, 5.6725, 2.9327)	3
<i>Conversions</i>	4
<i>Details</i>	6
<i>Harmonies</i>	12
<i>Previews</i>	24
<i>Color Blindness Simulation</i>	28
<i>CSS Examples</i>	31

Color

**HunterLab(59.6951, 5.6725,
2.9327)**

Conversions

Conversions Part 1

Format	Color
Hex	B39BA2
RGB	179, 155, 162
RGB Percent	70%, 61%, 64%
CMY	0.2980, 0.3921, 0.3647
CMYK	0.00, 0.13, 0.09, 0.30
HSL	343°, 14%, 65%
HSV	343°, 13%, 70%
XYZ	36.8334, 35.6350, 39.1193
YIQ	162.9740, 12.0570, 7.2650

Conversions

Conversions Part 2

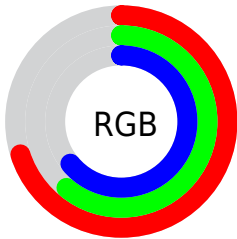
Format	Color
RYB	179, 155, 162
Decimal	11770786
CIELab	66.24, 10.05, -0.39
CIElCh	66, 10.056, 357.799
Yxy	35.6366, 0.3301, 0.3194
Android (android.graphics.Color)	4289960866 (0xFFB39BA2)
YUV	162.9740, -0.4802, 14.0548
Hunter-Lab	59.6951, 5.6725, 2.9327

Details

The HunterLab color $59.6951, 5.6725, 2.9327$ is a light color, and the websafe version is hex 999999 . A complement of this color would be $64.9525, -11.7500, 4.1887$, and the grayscale version is $60.5077, -3.2285, 3.2875$.

A 20% lighter version of the original color is $82.6274, 5.7283, 3.9103$, and $39.3218, 5.4933, 2.0830$ is the 20% darker color. If you saturate the color by 10%, you get $54.4839, 12.7726, 2.7083$, and if you desaturate by 10%, it is $65.2050, -1.2614, 3.4274$.

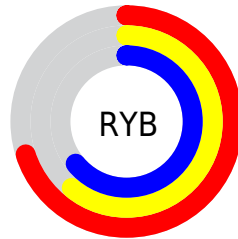
Distribution



Red (70%)

Green (61%)

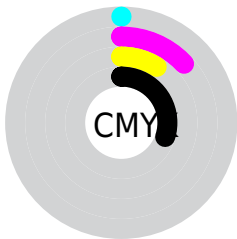
Blue (64%)



Red (70%)

Yellow (61%)

Blue (64%)

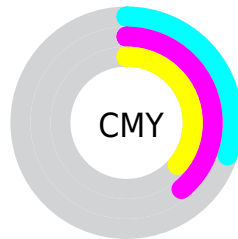


Cyan (0%)

Magenta (13%)

Yellow (9%)

Black (30%)



Cyan (30%)

Magenta (39%)

Yellow (36%)

Brightness & Saturation Gradients

These gradients show how the HunterLab color 59.6951, 5.6725, 2.9327 changes by changing the brightness by 10 percent. The first figure shows a shift by +10% for each color and the second figure -10%.

Similar to the brightness gradients but the following saturation gradients show a change of the HunterLab color 59.6951, 5.6725, 2.9327 by changing the saturation by 10% instead.

■ 59.6951, 5.6725,
2.9327

■ 59.6951, 5.6725,
2.9327

180.9336, 2.9699,
9.3925

■ 49.1464, 5.7105,
2.3792

■ 82.7471, 5.4041,
4.1523

■ 39.3035, 5.6776,
1.8645

■ 95.1793, 5.1886,
4.8123

■ 30.2228, 5.5611,
1.3931

108.1783, 4.9240,
5.5039

■ 21.9745, 5.3458,
0.9693

121.7205, 4.6139,
6.2257

■ 14.6532, 5.0094,
0.5991

135.7850, 4.2611,
6.9764

■ 8.3124, 4.8546,
0.2599

150.3529, 3.8681,

0.0000, NaN, NaN

7.7551

0.0000, NaN, NaN

165.4075, 3.4371,
8.5607

0.0000, NaN, NaN

■ 59.6951, 5.6725,
2.9327

■ 59.6951, 5.6725,
2.9327

■ 54.4839, 12.7726,
2.7083

■ 65.2050, -1.2614,
3.4274

■ 49.6205, 20.0087,
2.8092

■ 70.9673, -8.0205,
4.1411

■ 45.1714, 27.2855,
3.3013

■ 76.9494, -14.6187,
5.0360

■ 41.2143, 34.4158,
4.2485

■ 83.1241, -21.0751,
6.0813

■ 37.8361, 41.0813,
5.6940

■ 89.4694, -27.4102,
7.2525

■ 35.1226, 46.8256,
7.6302

■ 93.4248, -30.1393,
5.6636

■ 33.1385, 51.1261,
9.9641

■ 93.8372, -27.7746,
-0.2088

■ 31.8969, 53.5853,
12.5031

■ 93.9807, -26.9540,
-2.2469

■ 31.3584, 54.4983,
14.0915

Harmonies

Analogous

The Analogous color harmony consists of three colors that are next to each other on the color wheel.



59.6964, 4.2814, -1.2870



59.6951, 5.6725, 2.9327



59.6964, 4.6288, 6.9482

Triad

The Triadic color harmony groups three colors that are evenly spaced from another and form a triangle on the color wheel.



59.6964, 5.6708, 2.9337



59.6964, -7.1553, 10.0568



59.6964, -7.7124, -4.1132

Complementary

The Complementary color scheme is a pair of colors which are on the opposite of each other on the color wheel.



59.6951, 5.6725, 2.9327



64.9525, -11.7500, 4.1887

Split Complementary

Split-complementary colors differ from the complementary color scheme. The scheme consists of three colors, the original color and two neighbors of the complement color.



59.6964, -10.6231, -0.7023



59.6951, 5.6725, 2.9327



59.6964, -10.3082, 7.4556

Square

The Square scheme is like the rectangle color scheme, but the four colors are evenly spaced on the color wheel.



59.6964, 5.6708, 2.9337



59.6964, -2.8571, 10.8756



59.6964, -11.5594, 3.5634



59.6964, -3.5191, -5.5380

Rectangle

The Rectangle color scheme consists of four colors that form a rectangle on the color wheel.



59.6951, 5.6725, 2.9327



59.6964, 2.7123, 9.0098



59.6964, -11.5594, 3.5634



59.6964, -8.8685, -3.1491

Sweetspot

The Sweet Spot groups the original color and five complimentary colors.



59.6964, 5.6708, 2.9337



86.7628, -1.0815, 4.5333



59.5375, 6.2258, -5.6753



40.5738, -0.1855, 2.1061



95.4677, -5.0939, 5.1869



42.2927, -2.2566, 2.2978

Same Dimension

The Same Dimension uses a secret algorithm to generate beautiful new colors.



59.6964, 5.6708, 2.9337



77.8482, 10.2892, 3.7999



60.8474, 2.1885, 7.3137



29.2313, 1.3298, 1.4664



26.3795, 45.8826, 11.5662



4.7894, 8.5421, 0.4576

Inverse Universe

The Inverse Universe completely reimagines the original color for something new.



59.6964, 5.6708, 2.9337



77.8482, 10.2892, 3.7999



63.6975, -8.2612, -0.5918



29.2313, 1.3298, 1.4664



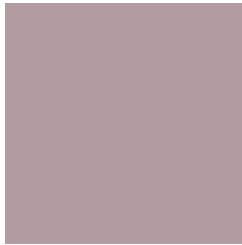
26.3795, 45.8826, 11.5662



4.7894, 8.5421, 0.4576

Previews

White Background



This preview shows how the HunterLab color 59.6951, 5.6725, 2.9327 looks on a white background.

Color Contrast Check

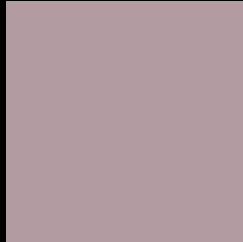
Large Text (above 18pt) WCAG AA × Fail

Any Text WCAG AA × Fail

Large Text (above 18pt) WCAG AAA × Fail

Any Text WCAG AAA × Fail

Black Background



This preview shows how the HunterLab color 59.6951, 5.6725, 2.9327 looks on a black background.

Color Contrast Check

Large Text (above 18pt) WCAG AA ✓ Pass

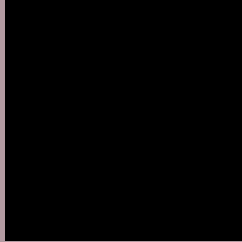
Any Text WCAG AA ✓ Pass

Large Text (above 18pt) WCAG AAA ✓ Pass

Any Text WCAG AAA ✓ Pass

If you want to check with other color combinations, try the [Color Contrast Checker](#).

HunterLab 59.6951, 5.6725, 2.9327 Background



This preview shows how black text looks on a background with the HunterLab color 59.6951, 5.6725, 2.9327.



This preview shows how white text looks on a background with the HunterLab color 59.6951, 5.6725,

Color Blindness Simulation

Color vision deficiency is a very complex topic, and I could not describe the different causes any better than Wikipedia does, so if you want to learn more, you should check out their [article about color blindness](#).

Dichromacy



Original Color

59.6951, 5.6725, 2.9327

Protanopia

59.7032, -1.4328, 1.4128

Deuteranopia

59.6789, 4.1791, 2.8873



Tritanopia

59.6386, 7.1553, 1.0088

Trichromacy



Original Color

59.6951, 5.6725, 2.9327

Protanomaly

59.6398, 1.2518, 1.8557

Deuteranomaly

59.7768, 4.5075, 3.0091

Tritanomaly

59.6080, 6.9926, 1.4452

Monochromacy



Original Color

59.6951, 5.6725, 2.9327

Achromatopsia

60.5188, -3.2291, 3.2881

Achromatomaly

60.1839, 0.0982, 2.9510

CSS Examples

Text

The CSS property to change the color of the text to HunterLab 59.6951, 5.6725, 2.9327 is called "color". The color property can be set on classes, ids or directly on the HTML element.

This example shows how text in the color `rgb(179, 155, 162)` looks like.

```
.text, #text, p{  
    color:rgb(179, 155, 162)  
}
```

If you want to add a text shadow in that color use the text-shadow property, you can generate a text shadow directly with our [CSS Text Shadow Generator](#).

Here you see how black text with a 4 pixel rgb(179, 155, 162) colored shadow looks like.

```
.shadow{ text-shadow: 4px 4px 2px rgb(179, 155, 162) }
```

Border

The CSS property to change the border of an element to HunterLab 59.6951, 5.6725, 2.9327 is called "border". The border property can be set on classes, ids or directly on the HTML element.

This example shows the color as border, it can be applied via the CSS property "border" or "border-color".

```
.border, #border, table{ border:4px solid rgb(179, 155, 162) }
```


If only the border color should be changed use the property `border-color`.

```
.border{ border-color:rgb(179, 155, 162) }
```

If you want to add a box shadow in that color use:

Here you see how a box with a 4 pixel `rgb(179, 155, 162)` colored shadow looks like.

```
.boxshadow{ -moz-box-shadow:4px 4px 4px  
4px rgb(179, 155, 162); -webkit-box-  
shadow:4px 4px 4px 4px rgb(179, 155, 162);  
box-shadow:4px 4px 4px 4px rgb(179, 155,  
162) }
```

Background

The CSS property to change the background color of an element to HunterLab 59.6951, 5.6725, 2.9327 is called "background". The background property can be set on classes, ids or directly on the HTML element.

```
.background, #background, body{  
background: rgb(179, 155, 162) }
```

If only the background color should be changed can be used:

```
.background{ background-color: rgb(179,  
155, 162) }
```

This example shows the color as background, it is applied via the CSS property "background".

To optimize and compress your CSS code, you can use our [online CSS compressor and optimizer](#) based on csstidy. If you want to create a linear or radial gradient as background or border, check our [CSS Gradient Generator](#).

Hey! You found this booklet interesting? Support Converting Colors with the new Membership Option!

The pro membership hides all ads, plus gives you double the colors in the color bucket, and more awesome pro features!

[Learn more, Memberships starting at \\$2.50/m!](#)

**Follow me
on Twitter!**

@ConvertingColor