

Converting Colors

HunterLab(59.5637, 51.2219,
14.6059)

Have a look what the booklet for
HunterLab(59.5637, 51.2219,
14.6059) contains.

HunterLab(59.5819, 51.0934, 14.7992)	3
<i>Conversions</i>	4
<i>Details</i>	6
<i>Harmonies</i>	12
<i>Previews</i>	24
<i>Color Blindness Simulation</i>	28
<i>CSS Examples</i>	31

Color

**HunterLab(59.5819, 51.0934,
14.7992)**

Conversions

Conversions Part 1

Format	Color
Hex	FF7487
RGB	255, 116, 135
RGB Percent	100%, 45%, 53%
CMY	0.0000, 0.5451, 0.4706
CMYK	0.00, 0.55, 0.47, 0.00
HSL	352°, 100%, 73%
HSV	352°, 55%, 100%
XYZ	51.8585, 35.5000, 27.0406
YIQ	159.7270, 76.7450, 35.3770

Conversions

Conversions Part 2

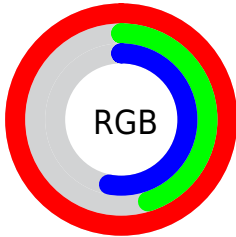
Format	Color
R_{YB}	255, 116, 135
Decimal	16741511
CIE _{Lab}	66.14, 54.53, 15.90
CIE _{LCh}	66, 56.800, 16.258
Yxy	35.5019, 0.4533, 0.3103
Android (android.graphics.Color)	4294931591 (0xFFFF7487)
YUV	159.7270, -12.1904, 83.5544
Hunter-Lab	59.5819, 51.0934, 14.7992

Details

The HunterLab color **59.5819, 51.0934, 14.7992** is a light color, and the websafe version is hex **FF6699**. A complement of this color would be **90.1609, -42.7460, 2.6196**, and the grayscale version is **59.2063, -3.1591, 3.2168**.

A 20% lighter version of the original color is **73.7536, 28.4142, 7.6972**, and **39.2083, 47.6758, 11.6813** is the 20% darker color. If you saturate the color by 10%, you get **54.6354, 60.9445, 17.7839**, and if you desaturate by 10%, it is **65.4941, 40.5363, 12.1836**.

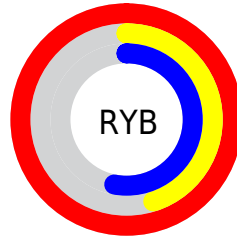
Distribution



Red (100%)

Green (45%)

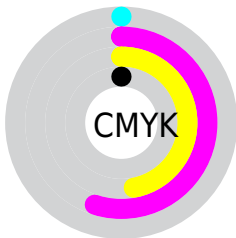
Blue (53%)



Red (100%)

Yellow (45%)

Blue (53%)

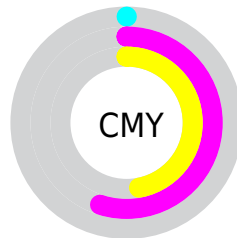


Cyan (0%)

Magenta (55%)

Yellow (47%)

Black (0%)



Cyan (0%)

Magenta (55%)

Yellow (47%)

Brightness & Saturation Gradients

These gradients show how the HunterLab color 59.5819, 51.0934, 14.7992 changes by changing the brightness by 10 percent. The first figure shows a shift by +10% for each color and the second figure -10%.

Similar to the brightness gradients but the following saturation gradients show a change of the HunterLab color 59.5819, 51.0934, 14.7992 by changing the saturation by 10% instead.

59.5819, 51.0934,
14.7992

59.5819, 51.0934,
14.7992

180.7701, 63.0539,
27.6110

49.0406, 49.2786,
13.3263

82.6212, 54.3902,
17.6811

39.2053, 47.3641,
11.8142

95.0473, 55.8876,
19.1027

30.1328, 45.3637,
10.2452

108.0406, 57.2898,
20.5186

21.8936, 43.3345,
8.5894

121.5773, 58.6023,
21.9323

14.5825, 41.4477,
6.8190

135.6364, 59.8303,
23.3464

8.2430, 41.0904,
5.7701

150.1993, 60.9786,

0.0000, INF, NaN

24.7632

0.0000, NaN, NaN

165.2489, 62.0518,
26.1842

0.0000, NaN, NaN

■ 59.5819, 51.0934,
14.7992

■ 59.5819, 51.0934,
14.7992

■ 54.6354, 60.9445,
17.7839

■ 65.4941, 40.5363,
12.1836

■ 50.7900, 69.3305,
20.9644

■ 72.2193, 29.8236,
9.9968

■ 48.1391, 75.4047,
24.0579

■ 79.6254, 19.2580,
8.2342

■ 46.6679, 78.6281,
26.7246

■ 87.6003, 8.9815,
6.8555

■ 46.2389, 79.4460,
27.8596

■ 96.0536, -0.9623,
5.8095

100.0000, -5.3359,
5.4331

Harmonies

Analogous

The Analogous color harmony consists of three colors that are next to each other on the color wheel.



59.5835, 51.8268, -8.8321



59.5819, 51.0934, 14.7992



59.5835, 34.3271, 27.9278

Triad

The Triadic color harmony groups three colors that are evenly spaced from another and form a triangle on the color wheel.



59.5835, 51.0892, 14.8004



59.5835, -34.4163, 27.1901



59.5835, -14.3053, -61.5058

Complementary

The Complementary color scheme is a pair of colors which are on the opposite of each other on the color wheel.



59.5819, 51.0934, 14.7992



90.1609, -42.7460, 2.6196

Split Complementary

Split-complementary colors differ from the complementary color scheme. The scheme consists of three colors, the original color and two neighbors of the complement color.



59.5835, -33.2288, -40.8196



59.5819, 51.0934, 14.7992



59.5835, -43.4611, 13.2236

Square

The Square scheme is like the rectangle color scheme, but the four colors are evenly spaced on the color wheel.



59.5835, 51.0892, 14.8004



59.5835, -16.2011, 32.7631



59.5835, -43.0662, -11.2238



59.5835, 11.0599, -60.4934

Rectangle

The Rectangle color scheme consists of four colors that form a rectangle on the color wheel.



59.5819, 51.0934, 14.7992



59.5835, 17.6991, 31.9587



59.5835, -43.0662, -11.2238



59.5835, -21.5333, -56.5808

Sweetspot

The Sweet Spot groups the original color and five complimentary colors.



59.5835, 51.0892, 14.8004



86.3770, 10.4955, 7.0390



61.0169, 63.7065, -53.2162



39.1901, 5.8268, 3.3794

0.0000, NaN, NaN



46.2646, -2.4686, 2.5136

Same Dimension

The Same Dimension uses a secret algorithm to generate beautiful new colors.



59.5835, 51.0892, 14.8004



54.4188, 61.4000, 17.9382



70.2190, 24.0107, 29.7355



42.4588, 1.8347, 2.9119



33.4425, 57.4960, 19.8671



10.4915, 18.1490, 5.3689

Inverse Universe

The Inverse Universe completely reimagines the original color for something new.



59.5835, 51.0892, 14.8004



54.4188, 61.4000, 17.9382



74.3278, -16.2177, -29.9502



42.4588, 1.8347, 2.9119



33.4425, 57.4960, 19.8671



10.4915, 18.1490, 5.3689

Previews

White Background



This preview shows how the HunterLab color 59.5819, 51.0934, 14.7992 looks on a white background.

Color Contrast Check

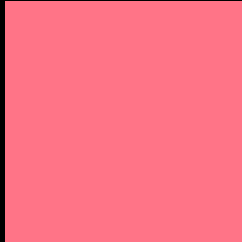
Large Text (above 18pt) WCAG AA × Fail

Any Text WCAG AA × Fail

Large Text (above 18pt) WCAG AAA × Fail

Any Text WCAG AAA × Fail

Black Background



This preview shows how the HunterLab color 59.5819, 51.0934, 14.7992 looks on a black background.

Color Contrast Check

Large Text (above 18pt) WCAG AA ✓ Pass

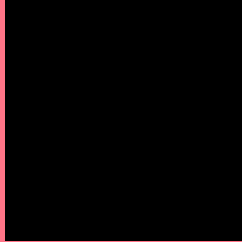
Any Text WCAG AA ✓ Pass

Large Text (above 18pt) WCAG AAA ✓ Pass

Any Text WCAG AAA ✓ Pass

If you want to check with other color combinations, try the [Color Contrast Checker](#).

HunterLab 59.5819, 51.0934, 14.7992 Background



This preview shows how black text looks on a background with the HunterLab color 59.5819, 51.0934, 14.7992.



This preview shows how white text looks on a background with the HunterLab color 59.5819, 51.0934,

Color Blindness Simulation

Color vision deficiency is a very complex topic, and I could not describe the different causes any better than Wikipedia does, so if you want to learn more, you should check out their [article about color blindness](#).

Dichromacy



Original Color

59.5819, 51.0934, 14.7992

Protanopia

59.6738, -1.9501, 4.5968

Deuteranopia

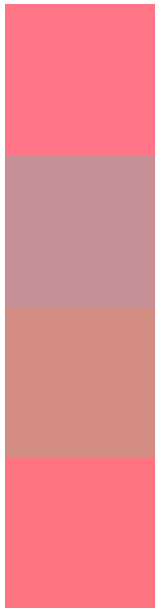
59.7654, 4.1938, 16.2969



Tritanopia

59.6104, 48.7497, 17.9526

Trichromacy



Original Color

59.5819, 51.0934, 14.7992

Protanomaly

58.4417, 16.1341, 7.0209

Deuteranomaly

58.8944, 20.5116, 15.0326

Tritanomaly

59.4797, 49.5532, 16.8160

Monochromacy



Original Color

59.5819, 51.0934, 14.7992

Achromatopsia

59.2902, -3.1636, 3.2213

Achromatomaly

58.1231, 15.1842, 6.2151

CSS Examples

Text

The CSS property to change the color of the text to HunterLab 59.5819, 51.0934, 14.7992 is called "color". The color property can be set on classes, ids or directly on the HTML element.

This example shows how text in the color `rgb(255, 116, 135)` looks like.

```
.text, #text, p{  
    color:rgb(255, 116, 135)  
}
```

If you want to add a text shadow in that color use the text-shadow property, you can generate a text shadow directly with our [CSS Text Shadow Generator](#).

Here you see how black text with a 4 pixel rgb(255, 116, 135) colored shadow looks like.

```
.shadow{ text-shadow: 4px 4px 2px rgb(255, 116, 135) }
```

Border

The CSS property to change the border of an element to HunterLab 59.5819, 51.0934, 14.7992 is called "border". The border property can be set on classes, ids or directly on the HTML element.

This example shows the color as border, it can be applied via the CSS property "border" or "border-color".

```
.border, #border, table{ border:4px solid rgb(255, 116, 135) }
```


If only the border color should be changed use the property `border-color`.

```
.border{ border-color:rgb(255, 116, 135) }
```

If you want to add a box shadow in that color use:

Here you see how a box with a 4 pixel `rgb(255, 116, 135)` colored shadow looks like.

```
.boxshadow{ -moz-box-shadow:4px 4px 4px  
4px rgb(255, 116, 135); -webkit-box-  
shadow:4px 4px 4px 4px rgb(255, 116, 135);  
box-shadow:4px 4px 4px 4px rgb(255, 116,  
135) }
```

Background

The CSS property to change the background color of an element to HunterLab 59.5819, 51.0934, 14.7992 is called "background". The background property can be set on classes, ids or directly on the HTML element.

```
.background, #background, body{  
background: rgb(255, 116, 135) }
```

If only the background color should be changed can be used:

```
.background{ background-color: rgb(255,  
116, 135) }
```

This example shows the color as background, it is applied via the CSS property "background".

To optimize and compress your CSS code, you can use our [online CSS compressor and optimizer](#) based on csstidy. If you want to create a linear or radial gradient as background or border, check our [CSS Gradient Generator](#).

Hey! You found this booklet interesting? Support Converting Colors with the new Membership Option!

The pro membership hides all ads, plus gives you double the colors in the color bucket, and more awesome pro features!

[Learn more, Memberships starting at \\$2.50/m!](#)

**Follow me
on Twitter!**

@ConvertingColor