

Converting Colors

HunterLab(59.7254, 3.2403,
4.7338)

Have a look what the booklet for
HunterLab(59.7254, 3.2403, 4.7338)
contains.

HunterLab(59.8437, 3.0501, 4.8803)	3
<i>Conversions</i>	4
<i>Details</i>	6
<i>Harmonies</i>	12
<i>Previews</i>	24
<i>Color Blindness Simulation</i>	28
<i>CSS Examples</i>	31

Color

**HunterLab(59.8437, 3.0501,
4.8803)**

Conversions

Conversions Part 1

Format	Color
Hex	B09D9E
RGB	176, 157, 158
RGB Percent	69%, 62%, 62%
CMY	0.3098, 0.3843, 0.3804
CMYK	0.00, 0.11, 0.10, 0.31
HSL	357°, 11%, 65%
HSV	357°, 11%, 69%
XYZ	36.1330, 35.8127, 37.3559
YIQ	162.7950, 11.0030, 4.3390

Conversions

Conversions Part 2

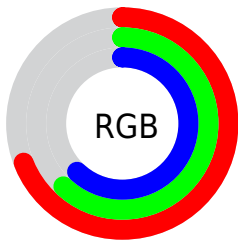
Format	Color
RYB	176, 157, 158
Decimal	11574686
CIELab	66.38, 7.14, 2.02
CIElCh	66, 7.415, 15.795
Yxy	35.8143, 0.3306, 0.3277
Android (android.graphics.Color)	4289764766 (0xFFB09D9E)
YUV	162.7950, -2.3639, 11.5808
Hunter-Lab	59.8437, 3.0501, 4.8803

Details

The HunterLab color $59.8437, 3.0501, 4.8803$ is a light color, and the websafe version is hex 999999 . A complement of this color would be $64.2766, -9.2629, 2.0320$, and the grayscale version is $60.4421, -3.2250, 3.2839$.

A 20% lighter version of the original color is $83.0944, 2.4477, 6.3283$, and $39.4722, 3.1709, 3.4844$ is the 20% darker color. If you saturate the color by 10%, you get $54.5394, 9.3788, 6.2389$, and if you desaturate by 10%, it is $65.4361, -3.0423, 3.6703$.

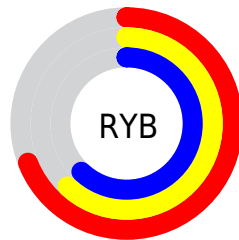
Distribution



Red (69%)

Green (62%)

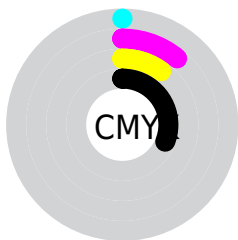
Blue (62%)



Red (69%)

Yellow (62%)

Blue (62%)

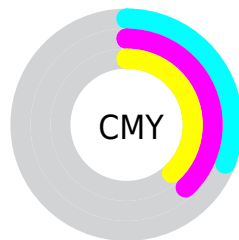


Cyan (0%)

Magenta (11%)

Yellow (10%)

Black (31%)



Cyan (31%)

Magenta (38%)

Yellow (38%)

Brightness & Saturation Gradients

These gradients show how the HunterLab color 59.8437, 3.0501, 4.8803 changes by changing the brightness by 10 percent. The first figure shows a shift by +10% for each color and the second figure -10%.

Similar to the brightness gradients but the following saturation gradients show a change of the HunterLab color 59.8437, 3.0501, 4.8803 by changing the saturation by 10% instead.

■ 59.8437, 3.0501,
4.8803

■ 59.8437, 3.0501,
4.8803

181.1486, -0.7357,
12.2268

■ 49.2857, 3.2372,
4.2018

■ 82.9128, 2.5061,
6.3284

■ 39.4328, 3.3628,
3.5529

■ 95.3528, 2.1621,
7.0941

■ 30.3413, 3.4161,
2.9358

108.3595, 1.7742,
7.8867

■ 22.0811, 3.3845,
2.3509

121.9089, 1.3454,
8.7053

■ 14.7463, 3.2493,
1.7984

135.9804, 0.8781,
9.5494

■ 8.4027, 3.2515,
1.4531

150.5551, 0.3743,

0.0000, NaN, NaN

10.4180

0.0000, NaN, NaN

165.6162, -0.1642,
11.3107

0.0000, NaN, NaN

■ 59.8437, 3.0501,
4.8803

■ 59.8437, 3.0501,
4.8803

■ 54.5394, 9.3788,
6.2389

■ 65.4361, -3.0423,
3.6703

■ 49.5711, 15.9460,
7.7592

■ 71.2717, -8.9117,
2.5872

■ 45.0045, 22.7026,
9.4486

■ 77.3191, -14.5866,
1.6135

■ 40.9183, 29.5210,
11.2921

■ 83.5525, -20.0952,
0.7328

■ 37.4028, 36.1489,
13.2364

■ 89.9509, -25.4643,
-0.0694

■ 34.5517, 42.1786,
15.1731

■ 93.7924, -27.6538,
-2.4951

■ 32.4423, 47.0833,
16.9365

■ 31.1051, 50.3765,
18.3396

■ 30.4145, 52.1524,
19.1373

Harmonies

Analogous

The Analogous color harmony consists of three colors that are next to each other on the color wheel.



59.8450, 3.0959, 1.7535



59.8437, 3.0501, 4.8803



59.8450, 1.3037, 7.4349

Triad

The Triadic color harmony groups three colors that are evenly spaced from another and form a triangle on the color wheel.



59.8450, 3.0484, 4.8813



59.8450, -7.6884, 7.3249



59.8450, -4.7494, -2.9105

Complementary

The Complementary color scheme is a pair of colors which are on the opposite of each other on the color wheel.



59.8437, 3.0501, 4.8803



64.2766, -9.2629, 2.0320

Split Complementary

Split-complementary colors differ from the complementary color scheme. The scheme consists of three colors, the original color and two neighbors of the complement color.



59.8450, -7.5673, -1.2446



59.8437, 3.0501, 4.8803



59.8450, -9.2390, 4.7235

Square

The Square scheme is like the rectangle color scheme, but the four colors are evenly spaced on the color wheel.



59.8450, 3.0484, 4.8813



59.8450, -4.9180, 8.7926



59.8450, -9.1952, 1.5870



59.8450, -1.4551, -2.8626

Rectangle

The Rectangle color scheme consists of four colors that form a rectangle on the color wheel.



59.8437, 3.0501, 4.8803



59.8450, -0.5659, 8.5180



59.8450, -9.1952, 1.5870



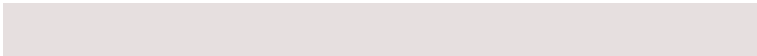
59.8450, -5.7822, -2.5286

Sweetspot

The Sweet Spot groups the original color and five complimentary colors.



59.8450, 3.0484, 4.8813



86.3925, -2.2713, 5.2953



60.2771, 5.6059, -3.1615



39.9360, -0.7562, 2.5239



94.3401, -5.0338, 5.1257



41.3092, -2.2042, 2.2444

Same Dimension

The Same Dimension uses a secret algorithm to generate beautiful new colors.



59.8450, 3.0484, 4.8813



78.8174, 6.1503, 6.9996



62.1773, -1.1872, 7.8737



29.1758, 1.0308, 2.2589



26.0574, 44.6917, 16.3142



4.6478, 8.0226, 2.5142

Inverse Universe

The Inverse Universe completely reimagines the original color for something new.



59.8450, 3.0484, 4.8813



78.8174, 6.1503, 6.9996



61.8249, -5.1152, -1.3839



29.1758, 1.0308, 2.2589



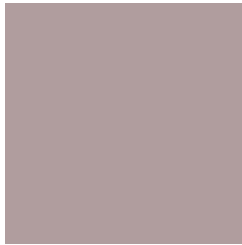
26.0574, 44.6917, 16.3142



4.6478, 8.0226, 2.5142

Previews

White Background



This preview shows how the HunterLab color 59.8437, 3.0501, 4.8803 looks on a white background.

Color Contrast Check

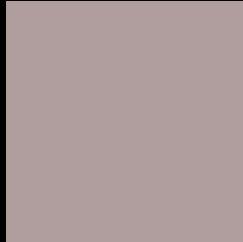
Large Text (above 18pt) WCAG AA × Fail

Any Text WCAG AA × Fail

Large Text (above 18pt) WCAG AAA × Fail

Any Text WCAG AAA × Fail

Black Background



This preview shows how the HunterLab color 59.8437, 3.0501, 4.8803 looks on a black background.

Color Contrast Check

Large Text (above 18pt) WCAG AA ✓ Pass

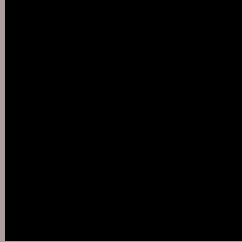
Any Text WCAG AA ✓ Pass

Large Text (above 18pt) WCAG AAA ✓ Pass

Any Text WCAG AAA ✓ Pass

If you want to check with other color combinations, try the [Color Contrast Checker](#).

HunterLab 59.8437, 3.0501, 4.8803 Background



This preview shows how black text looks on a background with the HunterLab color 59.8437, 3.0501, 4.8803.



This preview shows how white text looks on a background with the HunterLab color 59.8437, 3.0501,

Color Blindness Simulation

Color vision deficiency is a very complex topic, and I could not describe the different causes any better than Wikipedia does, so if you want to learn more, you should check out their [article about color blindness](#).

Dichromacy



Original Color

59.8437, 3.0501, 4.8803

Protanopia

60.0226, -2.1223, 4.0967

Deuteranopia

59.7583, 4.2111, 4.8022



Tritanopia

59.6799, 5.9882, 0.0756

Trichromacy



Original Color

59.8437, 3.0501, 4.8803

Protanomaly

60.0665, -0.5390, 4.6264

Deuteranomaly

59.6596, 3.8797, 4.6825

Tritanomaly

59.8368, 4.8280, 2.1546

Monochromacy



Original Color

59.8437, 3.0501, 4.8803

Achromatopsia

60.5188, -3.2291, 3.2881

Achromatomaly

60.3223, -1.0296, 4.0111

CSS Examples

Text

The CSS property to change the color of the text to HunterLab 59.8437, 3.0501, 4.8803 is called "color". The color property can be set on classes, ids or directly on the HTML element.

This example shows how text in the color `rgb(176, 157, 158)` looks like.

```
.text, #text, p{  
    color:rgb(176, 157, 158)  
}
```

If you want to add a text shadow in that color use the text-shadow property, you can generate a text shadow directly with our [CSS Text Shadow Generator](#).

Here you see how black text with a 4 pixel rgb(176, 157, 158) colored shadow looks like.

```
.shadow{ text-shadow: 4px 4px 2px rgb(176, 157, 158) }
```

Border

The CSS property to change the border of an element to HunterLab 59.8437, 3.0501, 4.8803 is called "border". The border property can be set on classes, ids or directly on the HTML element.

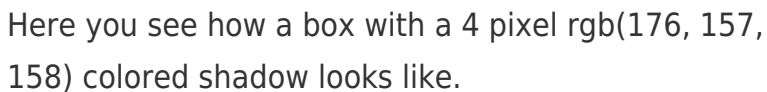
This example shows the color as border, it can be applied via the CSS property "border" or "border-color".

```
.border, #border, table{ border:4px solid rgb(176, 157, 158) }
```


If only the border color should be changed use the property `border-color`.

```
.border{ border-color:rgb(176, 157, 158) }
```

If you want to add a box shadow in that color use:



Here you see how a box with a 4 pixel `rgb(176, 157, 158)` colored shadow looks like.

```
.boxshadow{ -moz-box-shadow:4px 4px 4px 4px rgb(176, 157, 158); -webkit-box-shadow:4px 4px 4px 4px rgb(176, 157, 158); box-shadow:4px 4px 4px 4px rgb(176, 157, 158) }
```

Background

The CSS property to change the background color of an element to HunterLab 59.8437, 3.0501, 4.8803 is called "background". The background property can be set on classes, ids or directly on the HTML element.

```
.background, #background, body{  
background: rgb(176, 157, 158) }
```

If only the background color should be changed can be used:

```
.background{ background-color: rgb(176,  
157, 158) }
```

This example shows the color as background, it is applied via the CSS property "background".

To optimize and compress your CSS code, you can use our [online CSS compressor and optimizer](#) based on csstidy. If you want to create a linear or radial gradient as background or border, check our [CSS Gradient Generator](#).

Hey! You found this booklet interesting? Support Converting Colors with the new Membership Option!

The pro membership hides all ads, plus gives you double the colors in the color bucket, and more awesome pro features!

[Learn more, Memberships starting at \\$2.50/m!](#)

**Follow me
on Twitter!**

@ConvertingColor