

# Converting Colors

HunterLab(59.7280, 6.1962,  
25.4591)

Have a look what the booklet for  
HunterLab(59.7280, 6.1962,  
25.4591) contains.

<b>HunterLab(59.8385, 6.0994, 25.5296)</b> .....	3
<i><b>Conversions</b></i> .....	4
<i><b>Details</b></i> .....	6
<i><b>Harmonies</b></i> .....	12
<i><b>Previews</b></i> .....	24
<i><b>Color Blindness Simulation</b></i> .....	28
<i><b>CSS Examples</b></i> .....	31

# Color

**HunterLab(59.8385, 6.0994,  
25.5296)**

# Conversions

## Conversions Part 1

<b>Format</b>	<b>Color</b>
Hex	C79962
RGB	199, 153, 98
RGB Percent	78%, 60%, 38%
CMY	0.2196, 0.4000, 0.6157
CMYK	0.00, 0.23, 0.51, 0.22
HSL	33°, 47%, 58%
HSV	33°, 51%, 78%
XYZ	37.1491, 35.8065, 16.5087
YIQ	160.4840, 45.0710, -7.3530

# Conversions

## Conversions Part 2

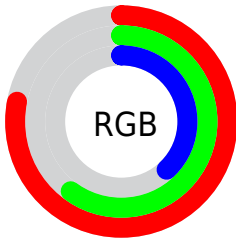
<b>Format</b>	<b>Color</b>
<b>RYB</b>	182, 199, 98
Decimal	13080930
CIELab	66.37, 10.52, 35.37
CIELCh	66, 36.905, 73.440
Yxy	35.8082, 0.4152, 0.4002
Android (android.graphics.Color)	4291271010 (0xFFC79962)
YUV	160.4840, -30.8046, 33.7785
Hunter-Lab	59.8385, 6.0994, 25.5296

# Details

The HunterLab color **59.8385, 6.0994, 25.5296** is a light color, and the websafe version is hex **CC9966**. A complement of this color would be **51.6388, -2.8488, -30.2689**, and the grayscale version is **59.5983, -3.1800, 3.2381**.

A 20% lighter version of the original color is **82.5152, 4.9868, 30.2001**, and **39.4622, 6.2759, 19.8925** is the 20% darker color. If you saturate the color by 10%, you get **57.1164, 9.1049, 27.8524**, and if you desaturate by 10%, it is **62.6995, 3.4394, 22.5168**.

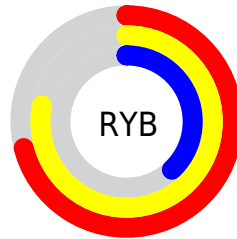
# Distribution



Red (78%)

Green (60%)

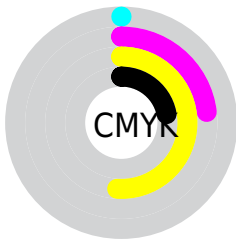
Blue (38%)



Red (71%)

Yellow (78%)

Blue (38%)

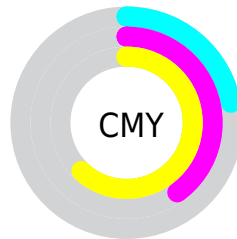


Cyan (0%)

Magenta (23%)

Yellow (51%)

Black (22%)



Cyan (22%)

Magenta (40%)

Yellow (62%)

# Brightness & Saturation Gradients

These gradients show how the HunterLab color 59.8385, 6.0994, 25.5296 changes by changing the brightness by 10 percent. The first figure shows a shift by +10% for each color and the second figure -10%.

Similar to the brightness gradients but the following saturation gradients show a change of the HunterLab color 59.8385, 6.0994, 25.5296 by changing the saturation by 10% instead.



■ 59.8385, 6.0994,  
25.5296

■ 59.8385, 6.0994,  
25.5296

181.1412, 3.5631,  
46.8438

■ 49.2809, 6.1138,  
22.7940

■ 82.9071, 5.8724,  
30.6743

■ 39.4284, 6.0568,  
19.9080

■ 95.3469, 5.6767,  
33.1240

■ 30.3372, 5.9148,  
16.8288

■ 108.3533, 5.4311,  
35.5120

■ 22.0774, 5.6721,  
13.5585

■ 121.9025, 5.1394,  
37.8494

■ 14.7431, 5.3062,  
10.3202

135.9737, 4.8043,  
40.1448

■ 8.3997, 5.0703,  
5.8798

150.5482, 4.4285,

0.0000, NaN, NaN

42.4054

0.0000, NaN, NaN

165.6091, 4.0142,  
44.6368

0.0000, NaN, NaN

■ 59.8385, 6.0994,  
25.5296

■ 59.8385, 6.0994,  
25.5296

■ 57.1164, 9.1049,  
27.8524

■ 62.6995, 3.4394,  
22.5168

■ 54.5383, 12.4643,  
29.4434

■ 65.6859, 1.1234,  
18.8594

■ 52.1145, 16.1627,  
30.2803

■ 68.7901, -0.8660,  
14.6084

■ 49.8526, 20.1693,  
30.3707

■ 72.0038, -2.5468,  
9.8138

■ 47.9026, 24.0673,  
29.9387

■ 75.3192, -3.9387,  
4.5231

■ 78.7292, -5.0619,  
-1.2196

■ 82.2271, -5.9361,  
-7.3740

■ 85.7239, -7.0380,  
-12.7349

■ 88.6179, -11.6903,  
-8.8962

# Harmonies

## Analogous

The Analogous color harmony consists of three colors that are next to each other on the color wheel.



59.8399, 21.5687, 20.4848



59.8385, 6.0994, 25.5296



59.8399, -10.3779, 25.7684

# Triad

The Triadic color harmony groups three colors that are evenly spaced from another and form a triangle on the color wheel.



59.8399, 6.0968, 25.5303



59.8399, -30.9789, -4.1736



59.8399, 20.1643, -22.9942

# Complementary

The Complementary color scheme is a pair of colors which are on the opposite of each other on the color wheel.



59.8385, 6.0994, 25.5296



51.6388, -2.8488, -30.2689

# Split Complementary

Split-complementary colors differ from the complementary color scheme. The scheme consists of three colors, the original color and two neighbors of the complement color.



59.8399, 4.3412, -34.0594



59.8385, 6.0994, 25.5296



59.8399, -24.4913, -21.3699

# Square

The Square scheme is like the rectangle color scheme, but the four colors are evenly spaced on the color wheel.



59.8399, 6.0968, 25.5303



59.8399, -30.6178, 11.2205



59.8399, -11.9544, -33.3954



59.8399, 30.2721, -5.9774



# Rectangle

The Rectangle color scheme consists of four colors that form a rectangle on the color wheel.



59.8385, 6.0994, 25.5296



59.8399, -19.6614, 23.3318



59.8399, -11.9544, -33.3954



59.8399, 15.2676, -27.7156

# Sweetspot

The Sweet Spot groups the original color and five complimentary colors.



59.8399, 6.0968, 25.5303



93.3606, -2.4253, 15.9049



47.8814, 39.3876, -3.0442



42.7728, -0.8999, 7.9828

0.0000, NaN, NaN



46.2646, -2.4686, 2.5136



# Same Dimension

The Same Dimension uses a secret algorithm to generate beautiful new colors.



59.8399, 6.0968, 25.5303



75.1785, 12.5322, 37.1452



73.0858, -17.2678, 35.3583



34.0265, -1.2935, 4.2816



38.6423, 18.7916, 24.1402



9.2225, 2.3939, 5.7248

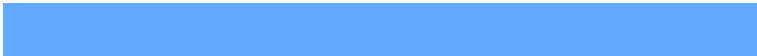


# Inverse Universe

The Inverse Universe completely reimagines the original color for something new.



51.6388, -2.8488, -30.2689



62.2538, -0.9231, -51.7592



39.5566, 21.4091, -56.2384



33.2714, -2.1723, -0.7735



27.5537, 10.7271, -57.5965

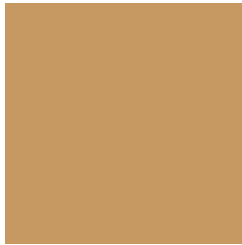


7.0980, 0.2281, -9.3643



# Previews

## White Background



This preview shows how the HunterLab color 59.8385, 6.0994, 25.5296 looks on a white background.

## Color Contrast Check

Large Text (above 18pt) WCAG AA × Fail

Any Text WCAG AA × Fail

Large Text (above 18pt) WCAG AAA × Fail

Any Text WCAG AAA × Fail



# Black Background



This preview shows how the HunterLab color 59.8385, 6.0994, 25.5296 looks on a black background.

## Color Contrast Check

Large Text (above 18pt) WCAG AA ✓ Pass

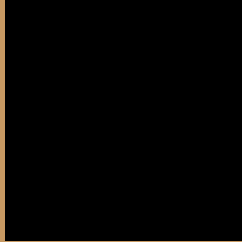
Any Text WCAG AA ✓ Pass

Large Text (above 18pt) WCAG AAA ✓ Pass

Any Text WCAG AAA ✓ Pass

If you want to check with other color combinations, try the [Color Contrast Checker](#).

## HunterLab 59.8385, 6.0994, 25.5296 Background



This preview shows how black text looks on a background with the HunterLab color 59.8385, 6.0994, 25.5296.



This preview shows how white text looks on a background with the HunterLab color 59.8385, 6.0994,

25.5296.

# Color Blindness Simulation

Color vision deficiency is a very complex topic, and I could not describe the different causes any better than Wikipedia does, so if you want to learn more, you should check out their [article about color blindness](#).

## Dichromacy



### Original Color

59.8385, 6.0994, 25.5296

### Protanopia

60.0086, -6.3373, 24.7016

### Deuteranopia

59.7736, 4.4702, 25.4487



## Tritanopia

59.8577, 18.3087, 5.6088

# Trichromacy



## Original Color

59.8385, 6.0994, 25.5296

## Protanomaly

59.9222, -2.1958, 24.9560

## Deuteranomaly

59.8860, 4.8466, 25.5461

## Tritanomaly

59.8573, 13.1868, 14.0429

# Monochromacy



## Original Color

59.8385, 6.0994, 25.5296

## Achromatopsia

59.2902, -3.1636, 3.2213

## Achromatomaly

59.0921, -0.6228, 12.6552

# CSS Examples

## Text

The CSS property to change the color of the text to HunterLab 59.8385, 6.0994, 25.5296 is called "color". The color property can be set on classes, ids or directly on the HTML element.

This example shows how text in the color `rgb(199, 153, 98)` looks like.

```
.text, #text, p{  
    color:rgb(199, 153, 98)  
}
```

If you want to add a text shadow in that color use the text-shadow property, you can generate a text shadow directly with our [CSS Text Shadow Generator](#).

Here you see how black text with a 4 pixel rgb(199, 153, 98) colored shadow looks like.

```
.shadow{ text-shadow: 4px 4px 2px rgb(199, 153, 98) }
```

## Border

The CSS property to change the border of an element to HunterLab 59.8385, 6.0994, 25.5296 is called "border". The border property can be set on classes, ids or directly on the HTML element.

This example shows the color as border, it can be applied via the CSS property "border" or "border-color".

```
.border, #border, table{ border:4px solid rgb(199, 153, 98) }
```



If only the border color should be changed use the property border-color.

```
.border{ border-color:rgb(199, 153, 98) }
```

If you want to add a box shadow in that color use:

Here you see how a box with a 4 pixel rgb(199, 153, 98) colored shadow looks like.

```
.boxshadow{ -moz-box-shadow:4px 4px 4px  
4px rgb(199, 153, 98); -webkit-box-  
shadow:4px 4px 4px 4px rgb(199, 153, 98);  
box-shadow:4px 4px 4px 4px rgb(199, 153,  
98) }
```

# Background

The CSS property to change the background color of an element to HunterLab 59.8385, 6.0994, 25.5296 is called "background". The background property can be set on classes, ids or directly on the HTML element.

```
.background, #background, body{  
background: rgb(199, 153, 98) }
```

If only the background color should be changed can be used:

```
.background{ background-color: rgb(199,  
153, 98) }
```

This example shows the color as background, it is applied via the CSS property "background".

To optimize and compress your CSS code, you can use our [online CSS compressor and optimizer](#) based on csstidy. If you want to create a linear or radial gradient as background or border, check our [CSS Gradient Generator](#).

Hey! You found this booklet interesting? Support Converting Colors with the new Membership Option!

The pro membership hides all ads, plus gives you double the colors in the color bucket, and more awesome pro features!

**[Learn more, Memberships starting at \\$2.50/m!](#)**

**Follow me  
on Twitter!**

@ConvertingColor