

Converting Colors

HunterLab(59.7578, 50.6796,
14.8853)

Have a look what the booklet for
HunterLab(59.7578, 50.6796,
14.8853) contains.

HunterLab(59.7761, 50.5949, 14.9843)	3
<i>Conversions</i>	4
<i>Details</i>	6
<i>Harmonies</i>	12
<i>Previews</i>	24
<i>Color Blindness Simulation</i>	28
<i>CSS Examples</i>	31

Color

**HunterLab(59.7761, 50.5949,
14.9843)**

Conversions

Conversions Part 1

Format	Color
Hex	FF7587
RGB	255, 117, 135
RGB Percent	100%, 46%, 53%
CMY	0.0000, 0.5411, 0.4706
CMYK	0.00, 0.54, 0.47, 0.00
HSL	352°, 100%, 73%
HSV	352°, 54%, 100%
XYZ	51.9744, 35.7318, 27.0792
YIQ	160.3140, 76.4700, 34.8540

Conversions

Conversions Part 2

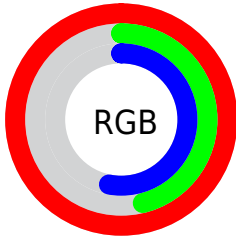
Format	Color
R_{YB}	255, 117, 135
Decimal	16741767
CIE _{Lab}	66.32, 54.06, 16.15
CIE _{LCh}	66, 56.425, 16.632
Yxy	35.7337, 0.4528, 0.3113
Android (android.graphics.Color)	4294931847 (0xFFFF7587)
YUV	160.3140, -12.4798, 83.0396
Hunter-Lab	59.7761, 50.5949, 14.9843

Details

The HunterLab color **59.7761, 50.5949, 14.9843** is a light color, and the websafe version is hex **FF6666**. A complement of this color would be **90.2314, -42.4066, 2.2078**, and the grayscale version is **59.4475, -3.1720, 3.2299**.

A 20% lighter version of the original color is **74.0121, 27.8722, 7.9807**, and **39.4797, 46.8843, 11.9261** is the 20% darker color. If you saturate the color by 10%, you get **54.7883, 60.4890, 17.9685**, and if you desaturate by 10%, it is **65.7251, 40.0281, 12.3541**.

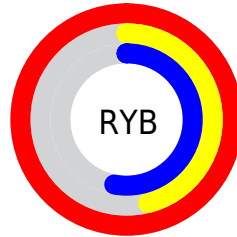
Distribution



Red (100%)

Green (46%)

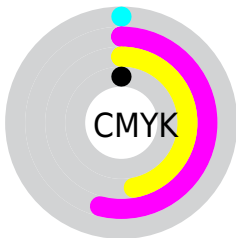
Blue (53%)



Red (100%)

Yellow (46%)

Blue (53%)

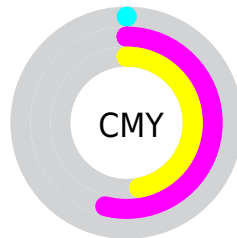


Cyan (0%)

Magenta (54%)

Yellow (47%)

Black (0%)



Cyan (0%)

Magenta (54%)

Yellow (47%)

Brightness & Saturation Gradients

These gradients show how the HunterLab color 59.7761, 50.5949, 14.9843 changes by changing the brightness by 10 percent. The first figure shows a shift by +10% for each color and the second figure -10%.

Similar to the brightness gradients but the following saturation gradients show a change of the HunterLab color 59.7761, 50.5949, 14.9843 by changing the saturation by 10% instead.

59.7761, 50.5949,
14.9843

59.7761, 50.5949,
14.9843

181.0511, 62.4072,
27.8982

49.2226, 48.7969,
13.4967

82.8377, 53.8574,
17.8928

39.3742, 46.8980,
11.9689

95.2742, 55.3376,
19.3267

30.2876, 44.9108,
10.3828

108.2774, 56.7230,
20.7542

22.0328, 42.8891,
8.7082

121.8236, 58.0189,
22.1790

14.7041, 40.9956,
6.9153

135.8919, 59.2306,
23.6039

8.3619, 40.4264,
5.8533

150.4635, 60.3630,

0.0000, INF, NaN

25.0309

0.0000, NaN, NaN

165.5217, 61.4205,
26.4619

0.0000, NaN, NaN

■ 59.7761, 50.5949,
14.9843

■ 59.7761, 50.5949,
14.9843

■ 54.7883, 60.4890,
17.9685

■ 65.7251, 40.0281,
12.3541

■ 50.8986, 68.9583,
21.1333

■ 72.4825, 29.3285,
10.1389

■ 48.2029, 75.1516,
24.1974

■ 79.9167, 18.7900,
8.3361

■ 46.6920, 78.5073,
26.8241

■ 87.9163, 8.5483,
6.9078

■ 46.2289, 79.4090,
28.0073

■ 96.3917, -1.3568,
5.8044

100.0000, -5.3359,
5.4331

Harmonies

Analogous

The Analogous color harmony consists of three colors that are next to each other on the color wheel.



59.7777, 51.5398, -8.3962



59.7761, 50.5949, 14.9843



59.7777, 33.7926, 27.9748

Triad

The Triadic color harmony groups three colors that are evenly spaced from another and form a triangle on the color wheel.



59.7777, 50.5907, 14.9855



59.7777, -34.4568, 27.0166



59.7777, -13.9735, -61.0800

Complementary

The Complementary color scheme is a pair of colors which are on the opposite of each other on the color wheel.



59.7761, 50.5949, 14.9843



90.2314, -42.4066, 2.2078

Split Complementary

Split-complementary colors differ from the complementary color scheme. The scheme consists of three colors, the original color and two neighbors of the complement color.



59.7777, -32.9217, -40.8077



59.7761, 50.5949, 14.9843



59.7777, -43.3590, 12.9475

Square

The Square scheme is like the rectangle color scheme, but the four colors are evenly spaced on the color wheel.



59.7777, 50.5907, 14.9855



59.7777, -16.4207, 32.6888



59.7777, -42.8480, -11.4759



59.7777, 11.2958, -59.7808

Rectangle

The Rectangle color scheme consists of four colors that form a rectangle on the color wheel.



59.7761, 50.5949, 14.9843



59.7777, 17.2345, 31.9614



59.7777, -42.8480, -11.4759



59.7777, -21.1990, -56.2938

Sweetspot

The Sweet Spot groups the original color and five complimentary colors.



59.7777, 50.5907, 14.9855



86.3692, 10.4540, 7.1507



61.5470, 63.9977, -52.0927



39.1860, 5.8054, 3.4372

0.0000, NaN, NaN



46.2646, -2.4686, 2.5136

Same Dimension

The Same Dimension uses a secret algorithm to generate beautiful new colors.



59.7777, 50.5907, 14.9855



54.3977, 61.3094, 18.2449



70.9959, 22.5407, 30.0851



42.4566, 1.8229, 2.9433



33.4346, 57.4669, 19.9837



10.4873, 18.1336, 5.4302

Inverse Universe

The Inverse Universe completely reimagines the original color for something new.



59.7777, 50.5907, 14.9855



54.3977, 61.3094, 18.2449



73.7427, -15.0989, -30.8899



42.4566, 1.8229, 2.9433



33.4346, 57.4669, 19.9837



10.4873, 18.1336, 5.4302

Previews

White Background



This preview shows how the HunterLab color 59.7761, 50.5949, 14.9843 looks on a white background.

Color Contrast Check

Large Text (above 18pt) WCAG AA × Fail

Any Text WCAG AA × Fail

Large Text (above 18pt) WCAG AAA × Fail

Any Text WCAG AAA × Fail

Black Background



This preview shows how the HunterLab color 59.7761, 50.5949, 14.9843 looks on a black background.

Color Contrast Check

Large Text (above 18pt) WCAG AA ✓ Pass

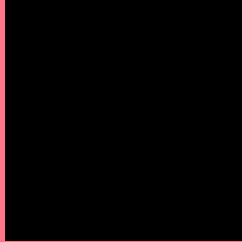
Any Text WCAG AA ✓ Pass

Large Text (above 18pt) WCAG AAA ✓ Pass

Any Text WCAG AAA ✓ Pass

If you want to check with other color combinations, try the [Color Contrast Checker](#).

HunterLab 59.7761, 50.5949, 14.9843 Background



This preview shows how black text looks on a background with the HunterLab color 59.7761, 50.5949, 14.9843.



This preview shows how white text looks on a background with the HunterLab color 59.7761, 50.5949, 14.9843.

Color Blindness Simulation

Color vision deficiency is a very complex topic, and I could not describe the different causes any better than Wikipedia does, so if you want to learn more, you should check out their [article about color blindness](#).

Dichromacy



Original Color

59.7761, 50.5949, 14.9843

Protanopia

59.9647, -2.4385, 4.9235

Deuteranopia

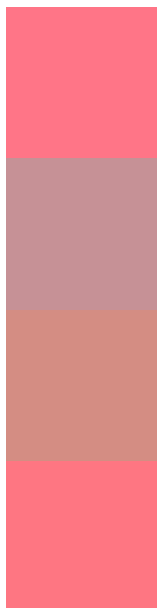
59.7654, 4.1938, 16.2969



Tritanopia

59.6322, 48.8500, 17.6368

Trichromacy



Original Color

59.7761, 50.5949, 14.9843

Protanomaly

58.7014, 15.6182, 7.3015

Deuteranomaly

58.8944, 20.5116, 15.0326

Tritanomaly

59.6987, 49.1563, 16.6722

Monochromacy



Original Color

59.7761, 50.5949, 14.9843

Achromatopsia

59.2902, -3.1636, 3.2213

Achromatomaly

58.1231, 15.1842, 6.2151

CSS Examples

Text

The CSS property to change the color of the text to HunterLab 59.7761, 50.5949, 14.9843 is called "color". The color property can be set on classes, ids or directly on the HTML element.

This example shows how text in the color `rgb(255, 117, 135)` looks like.

```
.text, #text, p{  
    color:rgb(255, 117, 135)  
}
```

If you want to add a text shadow in that color use the text-shadow property, you can generate a text shadow directly with our [CSS Text Shadow Generator](#).

Here you see how black text with a 4 pixel rgb(255, 117, 135) colored shadow looks like.

```
.shadow{ text-shadow: 4px 4px 2px rgb(255, 117, 135) }
```

Border

The CSS property to change the border of an element to HunterLab 59.7761, 50.5949, 14.9843 is called "border". The border property can be set on classes, ids or directly on the HTML element.

This example shows the color as border, it can be applied via the CSS property "border" or "border-color".

```
.border, #border, table{ border:4px solid rgb(255, 117, 135) }
```


If only the border color should be changed use the property `border-color`.

```
.border{ border-color:rgb(255, 117, 135) }
```

If you want to add a box shadow in that color use:

Here you see how a box with a 4 pixel `rgb(255, 117, 135)` colored shadow looks like.

```
.boxshadow{ -moz-box-shadow:4px 4px 4px 4px rgb(255, 117, 135); -webkit-box-shadow:4px 4px 4px 4px rgb(255, 117, 135); box-shadow:4px 4px 4px 4px rgb(255, 117, 135) }
```

Background

The CSS property to change the background color of an element to HunterLab 59.7761, 50.5949, 14.9843 is called "background". The background property can be set on classes, ids or directly on the HTML element.

```
.background, #background, body{  
background: rgb(255, 117, 135) }
```

If only the background color should be changed can be used:

```
.background{ background-color: rgb(255,  
117, 135) }
```

This example shows the color as background, it is applied via the CSS property "background".

To optimize and compress your CSS code, you can use our [online CSS compressor and optimizer](#) based on csstidy. If you want to create a linear or radial gradient as background or border, check our [CSS Gradient Generator](#).

Hey! You found this booklet interesting? Support Converting Colors with the new Membership Option!

The pro membership hides all ads, plus gives you double the colors in the color bucket, and more awesome pro features!

[Learn more, Memberships starting at \\$2.50/m!](#)

**Follow me
on Twitter!**

@ConvertingColor