

Converting Colors

HunterLab(59.8196, 47.5017,
1.7662)

Have a look what the booklet for
HunterLab(59.8196, 47.5017,
1.7662) contains.

HunterLab(59.9211, 47.5119, 2.0584)	3
<i>Conversions</i>	4
<i>Details</i>	6
<i>Harmonies</i>	12
<i>Previews</i>	24
<i>Color Blindness Simulation</i>	28
<i>CSS Examples</i>	31

Color

**HunterLab(59.9211, 47.5119,
2.0584)**

Conversions

Conversions Part 1

Format	Color
Hex	F47AA6
RGB	244, 122, 166
RGB Percent	96%, 48%, 65%
CMY	0.0431, 0.5215, 0.3490
CMYK	0.00, 0.50, 0.32, 0.04
HSL	338°, 85%, 72%
HSV	338°, 50%, 96%
XYZ	51.1507, 35.9054, 40.3109
YIQ	163.4940, 58.5880, 39.5480

Conversions

Conversions Part 2

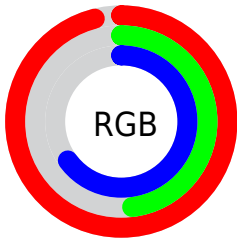
Format	Color
RYB	244, 122, 166
Decimal	16022182
CIELab	66.45, 51.32, -1.46
CIELCh	66, 51.340, 358.373
Yxy	35.9072, 0.4016, 0.2819
Android (android.graphics.Color)	4294212262 (0xFFFF47AA6)
YUV	163.4940, 1.2355, 70.6038
Hunter-Lab	59.9211, 47.5119, 2.0584

Details

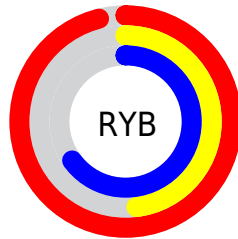
The HunterLab color **59.9211, 47.5119, 2.0584** is a light color, and the websafe version is hex **FF6699**. A complement of this color would be **85.4459, -43.3989, 13.9722**, and the grayscale version is **60.7012, -3.2389, 3.2980**.

A 20% lighter version of the original color is **76.1083, 31.0156, -5.8497**, and **39.5771, 43.9999, 1.3085** is the 20% darker color. If you saturate the color by 10%, you get **54.8727, 57.4377, 3.4580**, and if you desaturate by 10%, it is **65.7857, 36.9651, 1.4922**.

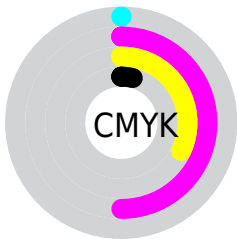
Distribution



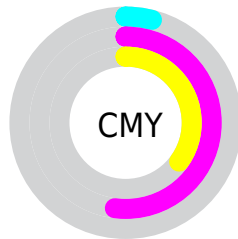
- Red (96%)
- Green (48%)
- Blue (65%)



- Red (96%)
- Yellow (48%)
- Blue (65%)



- Cyan (0%)
- Magenta (50%)
- Yellow (32%)
- Black (4%)



- Cyan (4%)
- Magenta (52%)
- Yellow (35%)

Brightness & Saturation Gradients

These gradients show how the HunterLab color 59.9211, 47.5119, 2.0584 changes by changing the brightness by 10 percent. The first figure shows a shift by +10% for each color and the second figure -10%.

Similar to the brightness gradients but the following saturation gradients show a change of the HunterLab color 59.9211, 47.5119, 2.0584 by changing the saturation by 10% instead.

■ 59.9211, 47.5119,
2.0584

■ 59.9211, 47.5119,
2.0584

181.2608, 58.5136,
8.1375

■ 49.3584, 45.8057,
1.5584

■ 82.9993, 50.5883,
3.1807

■ 39.5003, 43.9930,
1.1006

■ 95.4434, 51.9755,
3.7954

■ 30.4031, 42.0814,
0.6906

■ 108.4540, 53.2688,
4.4435

■ 22.1367, 40.1122,
0.3342

122.0073, 54.4739,
5.1236

■ 14.7950, 38.2178,
0.0394

136.0824, 55.5962,
5.8342

■ 8.4495, 37.3744,
-0.2550

150.6606, 56.6407,

0.0000, INF, NaN

6.5741

0.0000, NaN, NaN

165.7251, 57.6118,
7.3422

0.0000, NaN, NaN

■ 59.9211, 47.5119,
2.0584

■ 59.9211, 47.5119,
2.0584

■ 54.8727, 57.4377,
3.4580

■ 65.7857, 36.9651,
1.4922

■ 50.7633, 66.1058,
5.7520

■ 72.3372, 26.2440,
1.6378

■ 47.6973, 72.7363,
8.8918

■ 79.4672, 15.5954,
2.3708

■ 45.7107, 76.6815,
12.6604

■ 87.0848, 5.1403,
3.5786

■ 44.6518, 78.0444,
16.6222

■ 95.1162, -5.0780,
5.1682

■ 44.6515, 78.0447,
16.6233

■ 98.9814, -8.8974,
4.1659

Harmonies

Analogous

The Analogous color harmony consists of three colors that are next to each other on the color wheel.



59.9226, 39.1204, -23.1421



59.9211, 47.5119, 2.0584



59.9226, 40.7035, 19.9568

Triad

The Triadic color harmony groups three colors that are evenly spaced from another and form a triangle on the color wheel.



59.9226, 47.5084, 2.0598



59.9226, -22.7342, 29.6625



59.9226, -24.5989, -44.5271

Complementary

The Complementary color scheme is a pair of colors which are on the opposite of each other on the color wheel.



59.9211, 47.5119, 2.0584



85.4459, -43.3989, 13.9722

Split Complementary

Split-complementary colors differ from the complementary color scheme. The scheme consists of three colors, the original color and two neighbors of the complement color.



59.9226, -37.2491, -20.2703



59.9211, 47.5119, 2.0584



59.9226, -36.2917, 21.3407

Square

The Square scheme is like the rectangle color scheme, but the four colors are evenly spaced on the color wheel.



59.9226, 47.5084, 2.0598



59.9226, -1.9447, 31.8532



59.9226, -41.1894, 4.4393



59.9226, -4.4461, -55.5804

Rectangle

The Rectangle color scheme consists of four colors that form a rectangle on the color wheel.



59.9211, 47.5119, 2.0584



59.9226, 28.9662, 26.8949



59.9226, -41.1894, 4.4393



59.9226, -29.7499, -37.2873

Sweetspot

The Sweet Spot groups the original color and five complimentary colors.



59.9226, 47.5084, 2.0598



87.4647, 10.9127, 3.0669



57.1240, 46.6300, -52.8175



39.6870, 6.1260, 1.2992

0.0000, NaN, NaN



46.2646, -2.4686, 2.5136

Same Dimension

The Same Dimension uses a secret algorithm to generate beautiful new colors.



59.9226, 47.5084, 2.0598



57.6221, 60.5309, 3.6637



62.3649, 33.8255, 21.5144



40.7201, 2.1475, 1.6994



32.9617, 57.6820, 11.7320



9.8684, 17.4542, 2.0798

Inverse Universe

The Inverse Universe completely reimagines the original color for something new.



59.9226, 47.5084, 2.0598



57.6221, 60.5309, 3.6637



81.2469, -27.8792, -12.8821



40.7201, 2.1475, 1.6994



32.9617, 57.6820, 11.7320



9.8684, 17.4542, 2.0798

Previews

White Background



This preview shows how the HunterLab color 59.9211, 47.5119, 2.0584 looks on a white background.

Color Contrast Check

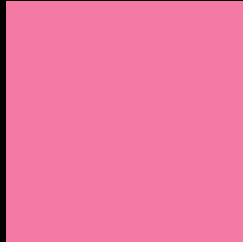
Large Text (above 18pt) WCAG AA × Fail

Any Text WCAG AA × Fail

Large Text (above 18pt) WCAG AAA × Fail

Any Text WCAG AAA × Fail

Black Background



This preview shows how the HunterLab color 59.9211, 47.5119, 2.0584 looks on a black background.

Color Contrast Check

Large Text (above 18pt) WCAG AA ✓ Pass

Any Text WCAG AA ✓ Pass

Large Text (above 18pt) WCAG AAA ✓ Pass

Any Text WCAG AAA ✓ Pass

If you want to check with other color combinations, try the [Color Contrast Checker](#).

HunterLab 59.9211, 47.5119, 2.0584 Background



This preview shows how black text looks on a background with the HunterLab color 59.9211, 47.5119, 2.0584.



This preview shows how white text looks on a background with the HunterLab color 59.9211, 47.5119,

Color Blindness Simulation

Color vision deficiency is a very complex topic, and I could not describe the different causes any better than Wikipedia does, so if you want to learn more, you should check out their [article about color blindness](#).

Dichromacy



Original Color

59.9211, 47.5119, 2.0584

Protanopia

60.2290, 0.5493, -10.8332

Deuteranopia

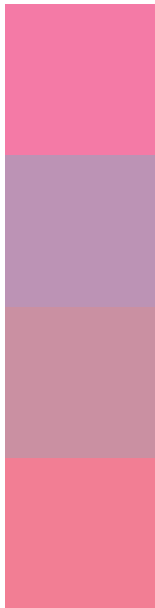
60.0974, 4.0199, 4.2912



Tritanopia

59.9544, 39.5074, 14.2306

Trichromacy



Original Color

59.9211, 47.5119, 2.0584

Protanomaly

59.0720, 16.0226, -7.1970

Deuteranomaly

59.2551, 19.3659, 2.6492

Tritanomaly

59.9475, 42.2572, 9.9695

Monochromacy



Original Color

59.9211, 47.5119, 2.0584

Achromatopsia

60.5188, -3.2291, 3.2881

Achromatomaly

59.2171, 14.0165, 1.5694

CSS Examples

Text

The CSS property to change the color of the text to HunterLab 59.9211, 47.5119, 2.0584 is called "color". The color property can be set on classes, ids or directly on the HTML element.

This example shows how text in the color `rgb(244, 122, 166)` looks like.

```
.text, #text, p{  
    color:rgb(244, 122, 166)  
}
```

If you want to add a text shadow in that color use the text-shadow property, you can generate a text shadow directly with our [CSS Text Shadow Generator](#).

Here you see how black text with a 4 pixel rgb(244, 122, 166) colored shadow looks like.

```
.shadow{ text-shadow: 4px 4px 2px rgb(244, 122, 166) }
```

Border

The CSS property to change the border of an element to HunterLab 59.9211, 47.5119, 2.0584 is called "border". The border property can be set on classes, ids or directly on the HTML element.

This example shows the color as border, it can be applied via the CSS property "border" or "border-color".

```
.border, #border, table{ border:4px solid rgb(244, 122, 166) }
```


If only the border color should be changed use the property `border-color`.

```
.border{ border-color:rgb(244, 122, 166) }
```

If you want to add a box shadow in that color use:

Here you see how a box with a 4 pixel `rgb(244, 122, 166)` colored shadow looks like.

```
.boxshadow{ -moz-box-shadow:4px 4px 4px  
4px rgb(244, 122, 166); -webkit-box-  
shadow:4px 4px 4px 4px rgb(244, 122, 166);  
box-shadow:4px 4px 4px 4px rgb(244, 122,  
166) }
```

Background

The CSS property to change the background color of an element to HunterLab 59.9211, 47.5119, 2.0584 is called "background". The background property can be set on classes, ids or directly on the HTML element.

```
.background, #background, body{  
background: rgb(244, 122, 166) }
```

If only the background color should be changed can be used:

```
.background{ background-color: rgb(244,  
122, 166) }
```

This example shows the color as background, it is applied via the CSS property "background".

To optimize and compress your CSS code, you can use our [online CSS compressor and optimizer](#) based on csstidy. If you want to create a linear or radial gradient as background or border, check our [CSS Gradient Generator](#).

Hey! You found this booklet interesting? Support Converting Colors with the new Membership Option!

The pro membership hides all ads, plus gives you double the colors in the color bucket, and more awesome pro features!

[Learn more, Memberships starting at \\$2.50/m!](#)

**Follow me
on Twitter!**

@ConvertingColor