

Converting Colors

HunterLab(59.9317, 0.1458,
16.4539)

Have a look what the booklet for
HunterLab(59.9317, 0.1458,
16.4539) contains.

HunterLab(59.8853, 0.2566, 16.3431)	3
<i>Conversions</i>	4
<i>Details</i>	6
<i>Harmonies</i>	12
<i>Previews</i>	24
<i>Color Blindness Simulation</i>	28
<i>CSS Examples</i>	31

Color

**HunterLab(59.8853, 0.2566,
16.3431)**

Conversions

Conversions Part 1

Format	Color
Hex	B59E81
RGB	181, 158, 129
RGB Percent	71%, 62%, 51%
CMY	0.2902, 0.3804, 0.4941
CMYK	0.00, 0.13, 0.29, 0.29
HSL	33°, 26%, 61%
HSV	33°, 29%, 71%
XYZ	35.2454, 35.8625, 25.8334
YIQ	161.5710, 23.0170, -4.1430

Conversions

Conversions Part 2

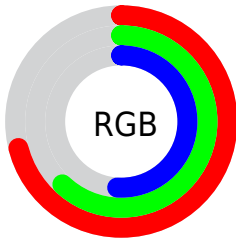
Format	Color
RYB	170, 181, 129
Decimal	11902593
CIELab	66.42, 3.98, 18.28
CIElCh	66, 18.709, 77.718
Yxy	35.8641, 0.3636, 0.3699
Android (android.graphics.Color)	4290092673 (0xFFB59E81)
YUV	161.5710, -16.0575, 17.0392
Hunter-Lab	59.8853, 0.2566, 16.3431

Details

The HunterLab color $59.8853, 0.2566, 16.3431$ is a light color, and the websafe version is hex 999966 . A complement of this color would be $55.1896, -4.0104, -13.0268$, and the grayscale version is $59.9912, -3.2010, 3.2594$.

A 20% lighter version of the original color is $83.0484, -0.9785, 19.5617$, and $39.5052, 0.7115, 12.9651$ is the 20% darker color. If you saturate the color by 10%, you get $57.2557, 2.1418, 19.7744$, and if you desaturate by 10%, it is $62.6173, -1.3457, 12.3845$.

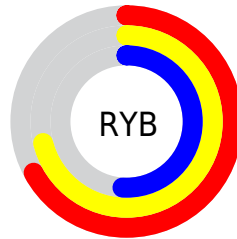
Distribution



Red (71%)

Green (62%)

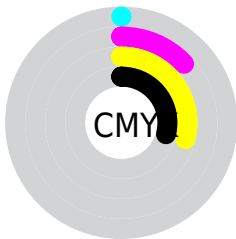
Blue (51%)



Red (67%)

Yellow (71%)

Blue (51%)

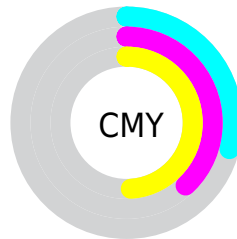


Cyan (0%)

Magenta (13%)

Yellow (29%)

Black (29%)



Cyan (29%)

Magenta (38%)

Yellow (49%)

Brightness & Saturation Gradients

These gradients show how the HunterLab color 59.8853, 0.2566, 16.3431 changes by changing the brightness by 10 percent. The first figure shows a shift by +10% for each color and the second figure -10%.

Similar to the brightness gradients but the following saturation gradients show a change of the HunterLab color 59.8853, 0.2566, 16.3431 by changing the saturation by 10% instead.

■ 59.8853, 0.2566,
16.3431

■ 59.8853, 0.2566,
16.3431

181.2088, -4.7130,
30.1458

■ 49.3247, 0.6074,
14.7238

■ 82.9592, -0.5899,
19.4868

■ 39.4691, 0.9078,
13.0528

■ 95.4015, -1.0745,
21.0278

■ 30.3745, 1.1492,
11.3083

■ 108.4102, -1.5971,
22.5569

■ 22.1109, 1.3225,
9.4552

121.9617, -2.1554,
24.0783

■ 14.7724, 1.4142,
7.5284

136.0351, -2.7477,
25.5955

■ 8.4279, 1.6075,
5.8995

150.6117, -3.3723,

0.0000, NaN, NaN

27.1111

0.0000, NaN, NaN

165.6747, -4.0278,
28.6273

0.0000, NaN, NaN

■ 59.8853, 0.2566,
16.3431

■ 59.8853, 0.2566,
16.3431

■ 57.2557, 2.1418,
19.7744

■ 62.6173, -1.3457,
12.3845

■ 54.7315, 4.3295,
22.6325

■ 65.4409, -2.6750,
7.9389

■ 52.3216, 6.8268,
24.8773

■ 68.3509, -3.7503,
3.0481

■ 50.0336, 9.6366,
26.4737

■ 71.3417, -4.5889,
-2.2496

■ 47.8746, 12.7520,
27.3995

■ 74.4077, -5.2078,
-7.9193

■ 45.8507, 16.1519,
27.6555

■ 77.5442, -5.6235,
-13.9290

■ 43.9618, 19.7740,
27.3461

■ 80.7186, -6.0055,
-19.8586

■ 43.7294, 20.2376,
27.3002

■ 83.2512, -10.1001,
-16.2558

■ 85.8267, -14.1476,
-12.7178

Harmonies

Analogous

The Analogous color harmony consists of three colors that are next to each other on the color wheel.



59.8867, 7.9888, 13.4931



59.8853, 0.2566, 16.3431



59.8867, -8.0063, 16.0582

Triad

The Triadic color harmony groups three colors that are evenly spaced from another and form a triangle on the color wheel.



59.8867, 0.2546, 16.3439



59.8867, -17.7360, -1.5765



59.8867, 9.1471, -7.9511

Complementary

The Complementary color scheme is a pair of colors which are on the opposite of each other on the color wheel.



59.8853, 0.2566, 16.3431



55.1896, -4.0104, -13.0268

Split Complementary

Split-complementary colors differ from the complementary color scheme. The scheme consists of three colors, the original color and two neighbors of the complement color.



59.8867, 1.7657, -13.1875



59.8853, 0.2566, 16.3431



59.8867, -13.6206, -9.1747

Square

The Square scheme is like the rectangle color scheme, but the four colors are evenly spaced on the color wheel.



59.8867, 0.2546, 16.3439



59.8867, -18.0911, 6.4181



59.8867, -6.5753, -13.6637



59.8867, 13.3083, -0.0804

Rectangle

The Rectangle color scheme consists of four colors that form a rectangle on the color wheel.



59.8853, 0.2566, 16.3431



59.8867, -12.7066, 14.1251



59.8867, -6.5753, -13.6637



59.8867, 6.9423, -10.1218

Sweetspot

The Sweet Spot groups the original color and five complimentary colors.



59.8867, 0.2546, 16.3439



87.4160, -3.5119, 10.8877



52.7303, 18.1015, -0.7860



40.3847, -1.5229, 5.4749



95.4677, -5.0939, 5.1869



42.2927, -2.2566, 2.2978

Same Dimension

The Same Dimension uses a secret algorithm to generate beautiful new colors.



59.8867, 0.2546, 16.3439



78.0719, 1.7676, 24.6431



66.4419, -11.6627, 22.2033



30.4386, -1.2146, 3.8288



36.5003, 16.3856, 22.7782



7.3020, 1.2383, 4.5211

Inverse Universe

The Inverse Universe completely reimagines the original color for something new.



55.1896, -4.0104, -13.0268



70.5706, -4.9689, -22.3811



48.8984, 8.0409, -22.7348



29.7121, -1.8866, -0.6943



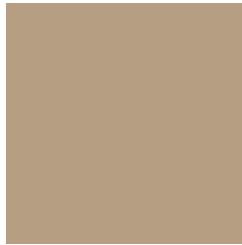
25.2850, 10.7906, -54.8978



5.6402, -0.2560, -6.4970

Previews

White Background



This preview shows how the HunterLab color 59.8853, 0.2566, 16.3431 looks on a white background.

Color Contrast Check

Large Text (above 18pt) WCAG AA × Fail

Any Text WCAG AA × Fail

Large Text (above 18pt) WCAG AAA × Fail

Any Text WCAG AAA × Fail

Black Background



This preview shows how the HunterLab color 59.8853, 0.2566, 16.3431 looks on a black background.

Color Contrast Check

Large Text (above 18pt) WCAG AA ✓ Pass

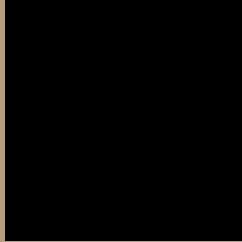
Any Text WCAG AA ✓ Pass

Large Text (above 18pt) WCAG AAA ✓ Pass

Any Text WCAG AAA ✓ Pass

If you want to check with other color combinations, try the [Color Contrast Checker](#).

HunterLab 59.8853, 0.2566, 16.3431 Background



This preview shows how black text looks on a background with the HunterLab color 59.8853, 0.2566, 16.3431.



This preview shows how white text looks on a background with the HunterLab color 59.8853, 0.2566,

Color Blindness Simulation

Color vision deficiency is a very complex topic, and I could not describe the different causes any better than Wikipedia does, so if you want to learn more, you should check out their [article about color blindness](#).

Dichromacy



Original Color

59.8853, 0.2566, 16.3431

Protanopia

59.8217, -4.3221, 15.5043

Deuteranopia

59.7878, 4.3135, 15.9732



Tritanopia

59.8443, 9.1845, 1.7689

Trichromacy



Original Color

59.8853, 0.2566, 16.3431

Protanomaly

59.8893, -2.6369, 15.9496

Deuteranomaly

59.7519, 2.7557, 15.9113

Tritanomaly

59.9166, 5.8388, 7.6275

Monochromacy



Original Color

59.8853, 0.2566, 16.3431

Achromatopsia

60.1088, -3.2073, 3.2658

Achromatomaly

60.1055, -2.3946, 8.5322

CSS Examples

Text

The CSS property to change the color of the text to HunterLab 59.8853, 0.2566, 16.3431 is called "color". The color property can be set on classes, ids or directly on the HTML element.

This example shows how text in the color `rgb(181, 158, 129)` looks like.

```
.text, #text, p{  
    color:rgb(181, 158, 129)  
}
```

If you want to add a text shadow in that color use the text-shadow property, you can generate a text shadow directly with our [CSS Text Shadow Generator](#).

Here you see how black text with a 4 pixel rgb(181, 158, 129) colored shadow looks like.

```
.shadow{ text-shadow: 4px 4px 2px rgb(181, 158, 129) }
```

Border

The CSS property to change the border of an element to HunterLab 59.8853, 0.2566, 16.3431 is called "border". The border property can be set on classes, ids or directly on the HTML element.

This example shows the color as border, it can be applied via the CSS property "border" or "border-color".

```
.border, #border, table{ border:4px solid rgb(181, 158, 129) }
```


If only the border color should be changed use the property `border-color`.

```
.border{ border-color:rgb(181, 158, 129) }
```

If you want to add a box shadow in that color use:

Here you see how a box with a 4 pixel `rgb(181, 158, 129)` colored shadow looks like.

```
.boxshadow{ -moz-box-shadow:4px 4px 4px  
4px rgb(181, 158, 129); -webkit-box-  
shadow:4px 4px 4px 4px rgb(181, 158, 129);  
box-shadow:4px 4px 4px 4px rgb(181, 158,  
129) }
```

Background

The CSS property to change the background color of an element to HunterLab 59.8853, 0.2566, 16.3431 is called "background". The background property can be set on classes, ids or directly on the HTML element.

```
.background, #background, body{  
background: rgb(181, 158, 129) }
```

If only the background color should be changed can be used:

```
.background{ background-color: rgb(181,  
158, 129) }
```

This example shows the color as background, it is applied via the CSS property "background".

To optimize and compress your CSS code, you can use our [online CSS compressor and optimizer](#) based on csstidy. If you want to create a linear or radial gradient as background or border, check our [CSS Gradient Generator](#).

Hey! You found this booklet interesting? Support Converting Colors with the new Membership Option!

The pro membership hides all ads, plus gives you double the colors in the color bucket, and more awesome pro features!

[Learn more, Memberships starting at \\$2.50/m!](#)

**Follow me
on Twitter!**

@ConvertingColor