

Converting Colors

HunterLab(59.9411, 9.2092,
8.5554)

Have a look what the booklet for
HunterLab(59.9411, 9.2092, 8.5554)
contains.

HunterLab(60.0507, 9.0017, 8.6719)	3
<i>Conversions</i>	4
<i>Details</i>	6
<i>Harmonies</i>	12
<i>Previews</i>	24
<i>Color Blindness Simulation</i>	28
<i>CSS Examples</i>	31

Color

**HunterLab(60.0507, 9.0017,
8.6719)**

Conversions

Conversions Part 1

Format	Color
Hex	BF9996
RGB	191, 153, 150
RGB Percent	75%, 60%, 59%
CMY	0.2510, 0.4000, 0.4118
CMYK	0.00, 0.20, 0.21, 0.25
HSL	4°, 24%, 67%
HSV	4°, 21%, 75%
XYZ	38.3821, 36.0609, 33.7917
YIQ	164.0200, 23.6110, 7.1230

Conversions

Conversions Part 2

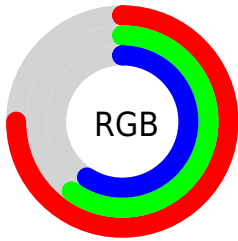
Format	Color
RYB	191, 153, 150
Decimal	12556694
CIELab	66.57, 13.68, 6.95
CIELCh	67, 15.344, 26.925
Yxy	36.0625, 0.3546, 0.3332
Android (android.graphics.Color)	4290746774 (0xFFBF9996)
YUV	164.0200, -6.9119, 23.6615
Hunter-Lab	60.0507, 9.0017, 8.6719

Details

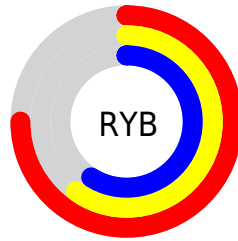
The HunterLab color **60.0507, 9.0017, 8.6719** is a light color, and the websafe version is hex **CC9999**. A complement of this color would be **67.9785, -14.0227, -1.3480**, and the grayscale version is **60.9593, -3.2526, 3.3120**.

A 20% lighter version of the original color is **83.0312, 9.3159, 10.5341**, and **39.6509, 8.5820, 6.9319** is the 20% darker color. If you saturate the color by 10%, you get **54.8866, 15.4406, 10.9337**, and if you desaturate by 10%, it is **65.5435, 2.8517, 6.4377**.

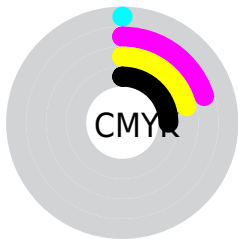
Distribution



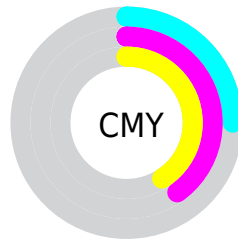
- Red (75%)
- Green (60%)
- Blue (59%)



- Red (75%)
- Yellow (60%)
- Blue (59%)



- Cyan (0%)
- Magenta (20%)
- Yellow (21%)
- Black (25%)



- Cyan (25%)
- Magenta (40%)
- Yellow (41%)

Brightness & Saturation Gradients

These gradients show how the HunterLab color 60.0507, 9.0017, 8.6719 changes by changing the brightness by 10 percent. The first figure shows a shift by +10% for each color and the second figure -10%.

Similar to the brightness gradients but the following saturation gradients show a change of the HunterLab color 60.0507, 9.0017, 8.6719 by changing the saturation by 10% instead.

60.0507, 9.0017,
8.6719

60.0507, 9.0017,
8.6719

181.4480, 7.6093,
17.8932

49.4798, 8.8612,
7.7250

83.1436, 9.0642,
10.6073

39.6130, 8.6399,
6.7863

95.5946, 9.0037,
11.5972

30.5064, 8.3232,
5.8516

108.6118, 8.8883,
12.6034

22.2297, 7.8938,
4.9122

122.1714, 8.7220,
13.6266

14.8762, 7.3272,
3.9520

136.2525, 8.5082,
14.6670

8.5269, 6.8210,
3.8419

150.8366, 8.2499,

0.0000, NaN, NaN

15.7249

0.0000, NaN, NaN

165.9068, 7.9495,
16.8003

0.0000, NaN, NaN

■ 60.0507, 9.0017,
8.6719

■ 60.0507, 9.0017,
8.6719

■ 54.8866, 15.4406,
10.9337

■ 65.5435, 2.8517,
6.4377

■ 50.1054, 22.1521,
13.1920

■ 71.3136, -3.0140,
4.2403

■ 45.7789, 29.0495,
15.3947

■ 77.3242, -8.6234,
2.0840

■ 41.9887, 35.9489,
17.4538

■ 83.5449, -14.0081,
-0.0328

■ 38.8215, 42.5307,
19.2414

■ 89.9510, -19.1995,
-2.1140

■ 36.3556, 48.3412,
20.6040

■ 94.7715, -24.0319,
-1.2105

■ 34.6387, 52.8743,
21.4104

■ 33.7495, 55.4069,
21.7663

Harmonies

Analogous

The Analogous color harmony consists of three colors that are next to each other on the color wheel.



60.0521, 10.5264, 2.5925



60.0507, 9.0017, 8.6719



60.0521, 4.1548, 12.8532

Triad

The Triadic color harmony groups three colors that are evenly spaced from another and form a triangle on the color wheel.



60.0521, 8.9996, 8.6729



60.0521, -13.8560, 9.7156



60.0521, -3.9127, -10.6448

Complementary

The Complementary color scheme is a pair of colors which are on the opposite of each other on the color wheel.



60.0507, 9.0017, 8.6719



67.9785, -14.0227, -1.3480

Split Complementary

Split-complementary colors differ from the complementary color scheme. The scheme consists of three colors, the original color and two neighbors of the complement color.



60.0521, -10.2313, -8.2132



60.0507, 9.0017, 8.6719



60.0521, -15.8082, 3.9373

Square

The Square scheme is like the rectangle color scheme, but the four colors are evenly spaced on the color wheel.



60.0521, 8.9996, 8.6729



60.0521, -9.0591, 13.4061



60.0521, -14.5112, -2.6894



60.0521, 2.8773, -9.0168

Rectangle

The Rectangle color scheme consists of four colors that form a rectangle on the color wheel.



60.0507, 9.0017, 8.6719



60.0521, -0.1971, 14.2426



60.0521, -14.5112, -2.6894



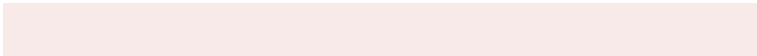
60.0521, -6.1596, -10.2692

Sweetspot

The Sweet Spot groups the original color and five complimentary colors.



60.0521, 8.9996, 8.6729



91.8199, -0.4445, 7.0293



60.4416, 16.7831, -9.2811



42.7881, 0.0346, 3.3850



98.8636, -5.2751, 5.3714



45.2661, -2.4153, 2.4594

Same Dimension

The Same Dimension uses a secret algorithm to generate beautiful new colors.



60.0521, 8.9996, 8.6729



76.8884, 16.2589, 13.1007



65.7689, -1.1609, 14.4940



31.0574, 0.7375, 2.7772



27.4448, 44.6315, 17.6927



5.7775, 7.7294, 3.6954

Inverse Universe

The Inverse Universe completely reimagines the original color for something new.



67.9785, -14.0227, -1.3480



89.8299, -21.4388, -3.2890



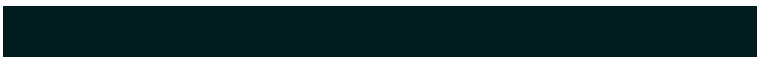
61.7780, -4.2625, -9.3127



32.6904, -3.9856, 0.7179



48.1557, -22.9670, -10.6114



9.7182, -4.7762, -1.8365

Previews

White Background



This preview shows how the HunterLab color 60.0507, 9.0017, 8.6719 looks on a white background.

Color Contrast Check

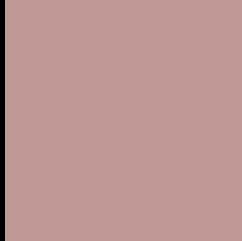
Large Text (above 18pt) WCAG AA × Fail

Any Text WCAG AA × Fail

Large Text (above 18pt) WCAG AAA × Fail

Any Text WCAG AAA × Fail

Black Background



This preview shows how the HunterLab color 60.0507, 9.0017, 8.6719 looks on a black background.

Color Contrast Check

Large Text (above 18pt) WCAG AA ✓ Pass

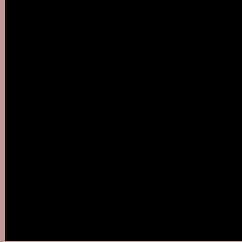
Any Text WCAG AA ✓ Pass

Large Text (above 18pt) WCAG AAA ✓ Pass

Any Text WCAG AAA ✓ Pass

If you want to check with other color combinations, try the [Color Contrast Checker](#).

HunterLab 60.0507, 9.0017, 8.6719 Background



This preview shows how black text looks on a background with the HunterLab color 60.0507, 9.0017, 8.6719.



This preview shows how white text looks on a background with the HunterLab color 60.0507, 9.0017,

8.6719.

Color Blindness Simulation

Color vision deficiency is a very complex topic, and I could not describe the different causes any better than Wikipedia does, so if you want to learn more, you should check out their [article about color blindness](#).

Dichromacy



Original Color

60.0507, 9.0017, 8.6719

Protanopia

60.0598, -2.2792, 6.3558

Deuteranopia

59.9099, 4.2204, 8.8505



Tritanopia

60.0958, 12.6619, 3.0667

Trichromacy



Original Color

60.0507, 9.0017, 8.6719

Protanomaly

59.9864, 1.7942, 7.2077

Deuteranomaly

59.9391, 5.7514, 8.9090

Tritanomaly

60.1095, 11.0317, 5.3256

Monochromacy



Original Color

60.0507, 9.0017, 8.6719

Achromatopsia

60.9293, -3.2510, 3.3104

Achromatomaly

60.5339, 1.0597, 5.1923

CSS Examples

Text

The CSS property to change the color of the text to HunterLab 60.0507, 9.0017, 8.6719 is called "color". The color property can be set on classes, ids or directly on the HTML element.

This example shows how text in the color `rgb(191, 153, 150)` looks like.

```
.text, #text, p{  
    color:rgb(191, 153, 150)  
}
```

If you want to add a text shadow in that color use the text-shadow property, you can generate a text shadow directly with our [CSS Text Shadow Generator](#).

Here you see how black text with a 4 pixel rgb(191, 153, 150) colored shadow looks like.

```
.shadow{ text-shadow: 4px 4px 2px rgb(191, 153, 150) }
```

Border

The CSS property to change the border of an element to HunterLab 60.0507, 9.0017, 8.6719 is called "border". The border property can be set on classes, ids or directly on the HTML element.

This example shows the color as border, it can be applied via the CSS property "border" or "border-color".

```
.border, #border, table{ border:4px solid rgb(191, 153, 150) }
```


If only the border color should be changed use the property `border-color`.

```
.border{ border-color:rgb(191, 153, 150) }
```

If you want to add a box shadow in that color use:

Here you see how a box with a 4 pixel `rgb(191, 153, 150)` colored shadow looks like.

```
.boxshadow{ -moz-box-shadow:4px 4px 4px  
4px rgb(191, 153, 150); -webkit-box-  
shadow:4px 4px 4px 4px rgb(191, 153, 150);  
box-shadow:4px 4px 4px 4px rgb(191, 153,  
150) }
```

Background

The CSS property to change the background color of an element to HunterLab 60.0507, 9.0017, 8.6719 is called "background". The background property can be set on classes, ids or directly on the HTML element.

```
.background, #background, body{  
background: rgb(191, 153, 150) }
```

If only the background color should be changed can be used:

```
.background{ background-color: rgb(191,  
153, 150) }
```

This example shows the color as background, it is applied via the CSS property "background".

To optimize and compress your CSS code, you can use our [online CSS compressor and optimizer](#) based on csstidy. If you want to create a linear or radial gradient as background or border, check our [CSS Gradient Generator](#).

Hey! You found this booklet interesting? Support Converting Colors with the new Membership Option!

The pro membership hides all ads, plus gives you double the colors in the color bucket, and more awesome pro features!

[Learn more, Memberships starting at \\$2.50/m!](#)

**Follow me
on Twitter!**

@ConvertingColor