

Converting Colors

HunterLab(59.9891, 35.1666,
-0.1658)

Have a look what the booklet for
HunterLab(59.9891, 35.1666,
-0.1658) contains.

HunterLab(59.8716, 35.3712, -0.1489)	3
<i>Conversions</i>	4
<i>Details</i>	6
<i>Harmonies</i>	12
<i>Previews</i>	24
<i>Color Blindness Simulation</i>	28
<i>CSS Examples</i>	31

Color

**HunterLab(59.8716, 35.3712,
-0.1489)**

Conversions

Conversions Part 1

Format	Color
Hex	E285AA
RGB	226, 133, 170
RGB Percent	89%, 52%, 67%
CMY	0.1137, 0.4784, 0.3333
CMYK	0.00, 0.41, 0.25, 0.11
HSL	336°, 62%, 70%
HSV	336°, 41%, 89%
XYZ	47.0073, 35.8461, 42.4716
YIQ	165.0250, 43.5510, 31.2230

Conversions

Conversions Part 2

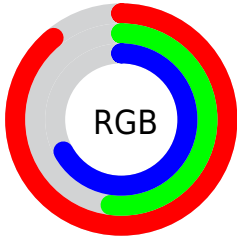
Format	Color
R _{YB}	226, 133, 170
Decimal	14845354
CIE Lab	66.40, 40.22, -4.06
CIE LCh	66, 40.428, 354.241
Yxy	35.8478, 0.3751, 0.2860
Android (android.graphics.Color)	4293035434 (0xFFE285AA)
YUV	165.0250, 2.4527, 53.4751
Hunter-Lab	59.8716, 35.3712, -0.1489

Details

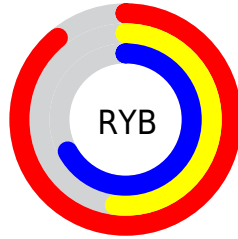
The HunterLab color **59.8716, 35.3712, -0.1489** is a light color, and the websafe version is hex **FF99CC**. A complement of this color would be **79.4068, -35.4312, 12.3600**, and the grayscale version is **61.3294, -3.2724, 3.3321**.

A 20% lighter version of the original color is **79.1598, 25.6607, -4.1267**, and **39.5321, 32.7504, -0.7729** is the 20% darker color. If you saturate the color by 10%, you get **54.6096, 45.0442, 0.1016**, and if you desaturate by 10%, it is **65.7709, 25.4777, 0.2876**.

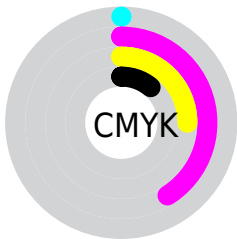
Distribution



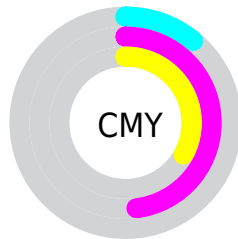
- Red (89%)
- Green (52%)
- Blue (67%)



- Red (89%)
- Yellow (52%)
- Blue (67%)



- Cyan (0%)
- Magenta (41%)
- Yellow (25%)
- Black (11%)



- Cyan (11%)
- Magenta (48%)
- Yellow (33%)

Brightness & Saturation Gradients

These gradients show how the HunterLab color 59.8716, 35.3712, -0.1489 changes by changing the brightness by 10 percent. The first figure shows a shift by +10% for each color and the second figure -10%.

Similar to the brightness gradients but the following saturation gradients show a change of the HunterLab color 59.8716, 35.3712, -0.1489 by changing the saturation by 10% instead.

■ 59.8716, 35.3712,
-0.1489

■ 59.8716, 35.3712,
-0.1489

181.1891, 42.9906,
5.0075

■ 49.3119, 34.0635,
-0.5216

■ 82.9440, 37.6534,
0.7382

■ 39.4572, 32.6393,
-0.8437

■ 95.3856, 38.6501,
1.2433

■ 30.3636, 31.0906,
-1.1081

■ 108.3936, 39.5593,
1.7865

■ 22.1012, 29.4233,
-1.3065

121.9445, 40.3874,
2.3655

■ 14.7639, 27.6829,
-1.4272

136.0172, 41.1400,
2.9786

■ 8.4196, 26.5264,
-1.5595

150.5932, 41.8218,

0.0000, INF, NaN

3.6243

0.0000, NaN, NaN

165.6556, 42.4374,
4.3010

0.0000, NaN, NaN

■ 59.8716, 35.3712,
-0.1489

■ 59.8716, 35.3712,
-0.1489

■ 54.6096, 45.0442,
0.1016

■ 65.7709, 25.4777,
0.2876

■ 50.0929, 54.0864,
1.1585

■ 72.2031, 15.6195,
1.2802

■ 46.4356, 61.8904,
3.1018

■ 79.0862, 5.9182,
2.7187

■ 43.7251, 67.7536,
5.9048

■ 86.3522, -3.5770,
4.5128

■ 41.9854, 71.1201,
9.3818

■ 93.9468, -12.8592,
6.5922

■ 41.1162, 72.2042,
12.6812

■ 97.3115, -15.0379,
3.7613

■ 97.4212, -14.4266,
2.2001

Harmonies

Analogous

The Analogous color harmony consists of three colors that are next to each other on the color wheel.



59.8730, 27.6285, -19.4070



59.8716, 35.3712, -0.1489



59.8730, 31.8255, 15.2849

Triad

The Triadic color harmony groups three colors that are evenly spaced from another and form a triangle on the color wheel.



59.8730, 35.3684, -0.1476



59.8730, -16.7836, 26.2142



59.8730, -22.1493, -30.1744

Complementary

The Complementary color scheme is a pair of colors which are on the opposite of each other on the color wheel.



59.8716, 35.3712, -0.1489



79.4068, -35.4312, 12.3600

Split Complementary

Split-complementary colors differ from the complementary color scheme. The scheme consists of three colors, the original color and two neighbors of the complement color.



59.8730, -31.6564, -11.9321



59.8716, 35.3712, -0.1489



59.8730, -28.8248, 19.5124

Square

The Square scheme is like the rectangle color scheme, but the four colors are evenly spaced on the color wheel.



59.8730, 35.3684, -0.1476



59.8730, 0.3228, 27.6707



59.8730, -33.9478, 6.4766



59.8730, -6.6391, -39.7413

Rectangle

The Rectangle color scheme consists of four colors that form a rectangle on the color wheel.



59.8716, 35.3712, -0.1489



59.8730, 23.7329, 22.0115



59.8730, -33.9478, 6.4766



59.8730, -26.0760, -24.6334

Sweetspot

The Sweet Spot groups the original color and five complimentary colors.



59.8730, 35.3684, -0.1476



89.9311, 7.8139, 2.9450



57.4989, 33.0314, -38.1842



41.1163, 4.2873, 1.2528

0.0000, NaN, NaN



46.2646, -2.4686, 2.5136

Same Dimension

The Same Dimension uses a secret algorithm to generate beautiful new colors.



59.8730, 35.3684, -0.1476



63.6584, 49.6689, -0.0007



61.0733, 25.5698, 16.5363



37.1355, 1.9801, 1.3883



31.0909, 54.6661, 9.0666



8.2906, 14.7763, 0.8730

Inverse Universe

The Inverse Universe completely reimagines the original color for something new.



59.8730, 35.3684, -0.1476



63.6584, 49.6689, -0.0007



77.4272, -24.5226, -7.8162



37.1355, 1.9801, 1.3883



31.0909, 54.6661, 9.0666



8.2906, 14.7763, 0.8730

Previews

White Background



This preview shows how the HunterLab color 59.8716, 35.3712, -0.1489 looks on a white background.

Color Contrast Check

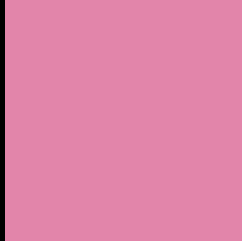
Large Text (above 18pt) WCAG AA × Fail

Any Text WCAG AA × Fail

Large Text (above 18pt) WCAG AAA × Fail

Any Text WCAG AAA × Fail

Black Background



This preview shows how the HunterLab color 59.8716, 35.3712, -0.1489 looks on a black background.

Color Contrast Check

Large Text (above 18pt) WCAG AA ✓ Pass

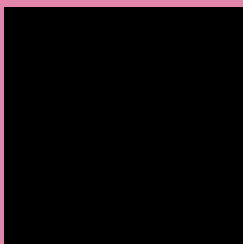
Any Text WCAG AA ✓ Pass

Large Text (above 18pt) WCAG AAA ✓ Pass

Any Text WCAG AAA ✓ Pass

If you want to check with other color combinations, try the [Color Contrast Checker](#).

HunterLab 59.8716, 35.3712, -0.1489 Background



This preview shows how black text looks on a background with the HunterLab color 59.8716, 35.3712, -0.1489.



This preview shows how white text looks on a background with the HunterLab color 59.8716, 35.3712, -0.1489.

-0.1489.

Color Blindness Simulation

Color vision deficiency is a very complex topic, and I could not describe the different causes any better than Wikipedia does, so if you want to learn more, you should check out their [article about color blindness](#).

Dichromacy



Original Color

59.8716, 35.3712, -0.1489

Protanopia

60.2044, 0.2495, -9.1976

Deuteranopia

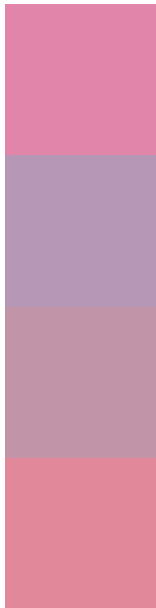
60.0810, 4.3227, 1.4958



Tritanopia

59.8709, 29.2484, 10.0682

Trichromacy



Original Color

59.8716, 35.3712, -0.1489

Protanomaly

59.5101, 11.9332, -6.6756

Deuteranomaly

59.5308, 15.1986, 0.5373

Tritanomaly

59.9854, 31.2302, 6.8586

Monochromacy



Original Color

59.8716, 35.3712, -0.1489

Achromatopsia

61.3402, -3.2730, 3.3327

Achromatomaly

60.1143, 10.1881, 1.1626

CSS Examples

Text

The CSS property to change the color of the text to HunterLab 59.8716, 35.3712, -0.1489 is called "color". The color property can be set on classes, ids or directly on the HTML element.

This example shows how text in the color `rgb(226, 133, 170)` looks like.

```
.text, #text, p{  
    color:rgb(226, 133, 170)  
}
```

If you want to add a text shadow in that color use the text-shadow property, you can generate a text shadow directly with our [CSS Text Shadow Generator](#).

Here you see how black text with a 4 pixel rgb(226, 133, 170) colored shadow looks like.

```
.shadow{ text-shadow: 4px 4px 2px rgb(226, 133, 170) }
```

Border

The CSS property to change the border of an element to HunterLab 59.8716, 35.3712, -0.1489 is called "border". The border property can be set on classes, ids or directly on the HTML element.

This example shows the color as border, it can be applied via the CSS property "border" or "border-color".

```
.border, #border, table{ border:4px solid rgb(226, 133, 170) }
```


If only the border color should be changed use the property `border-color`.

```
.border{ border-color:rgb(226, 133, 170) }
```

If you want to add a box shadow in that color use:

Here you see how a box with a 4 pixel `rgb(226, 133, 170)` colored shadow looks like.

```
.boxshadow{ -moz-box-shadow:4px 4px 4px  
4px rgb(226, 133, 170); -webkit-box-  
shadow:4px 4px 4px 4px rgb(226, 133, 170);  
box-shadow:4px 4px 4px 4px rgb(226, 133,  
170) }
```

Background

The CSS property to change the background color of an element to HunterLab 59.8716, 35.3712, -0.1489 is called "background". The background property can be set on classes, ids or directly on the HTML element.

```
.background, #background, body{  
background: rgb(226, 133, 170) }
```

If only the background color should be changed can be used:

```
.background{ background-color: rgb(226,  
133, 170) }
```

This example shows the color as background, it is applied via the CSS property "background".

To optimize and compress your CSS code, you can use our [online CSS compressor and optimizer](#) based on csstidy. If you want to create a linear or radial gradient as background or border, check our [CSS Gradient Generator](#).

Hey! You found this booklet interesting? Support Converting Colors with the new Membership Option!

The pro membership hides all ads, plus gives you double the colors in the color bucket, and more awesome pro features!

[Learn more, Memberships starting at \\$2.50/m!](#)

**Follow me
on Twitter!**

@ConvertingColor