

Converting Colors

HunterLab(60.0205, 10.9286,
14.5330)

Have a look what the booklet for
HunterLab(60.0205, 10.9286,
14.5330) contains.

HunterLab(60.0205, 10.9286, 14.5330)	3
<i>Conversions</i>	4
<i>Details</i>	6
<i>Harmonies</i>	12
<i>Previews</i>	24
<i>Color Blindness Simulation</i>	28
<i>CSS Examples</i>	31

Color

**HunterLab(60.0205, 10.9286,
14.5330)**

Conversions

Conversions Part 1

Format	Color
Hex	C79787
RGB	199, 151, 135
RGB Percent	78%, 59%, 53%
CMY	0.2196, 0.4078, 0.4706
CMYK	0.00, 0.24, 0.32, 0.22
HSL	15°, 36%, 65%
HSV	15°, 32%, 78%
XYZ	38.9930, 36.0246, 27.8199
YIQ	163.5280, 33.7440, 5.2000

Conversions

Conversions Part 2

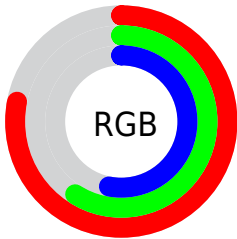
Format	Color
R_{YB}	199, 156, 135
Decimal	13080455
CIE Lab	66.54, 15.75, 15.40
CIE LCh	67, 22.028, 44.355
Yxy	36.0263, 0.3792, 0.3503
Android (android.graphics.Color)	4291270535 (0xFFC79787)
YUV	163.5280, -14.0643, 31.1089
Hunter-Lab	60.0205, 10.9286, 14.5330

Details

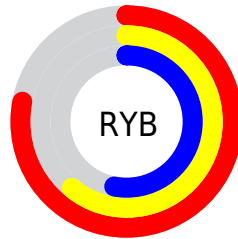
The HunterLab color **60.0205, 10.9286, 14.5330** is a light color, and the websafe version is hex **CC9999**. A complement of this color would be **65.6810, -13.7533, -8.5438**, and the grayscale version is **60.7828, -3.2432, 3.3024**.

A 20% lighter version of the original color is **82.7970, 10.6481, 17.1362**, and **39.6226, 10.3921, 11.7369** is the 20% darker color. If you saturate the color by 10%, you get **55.6898, 16.2307, 17.2992**, and if you desaturate by 10%, it is **64.6157, 5.9430, 11.5054**.

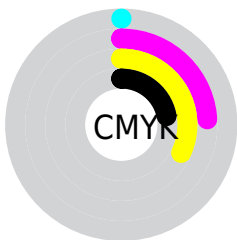
Distribution



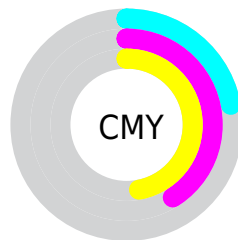
- Red (78%)
- Green (59%)
- Blue (53%)



- Red (78%)
- Yellow (61%)
- Blue (53%)



- Cyan (0%)
- Magenta (24%)
- Yellow (32%)
- Black (22%)



- Cyan (22%)
- Magenta (41%)
- Yellow (47%)

Brightness & Saturation Gradients

These gradients show how the HunterLab color 60.0205, 10.9286, 14.5330 changes by changing the brightness by 10 percent. The first figure shows a shift by +10% for each color and the second figure -10%.

Similar to the brightness gradients but the following saturation gradients show a change of the HunterLab color 60.0205, 10.9286, 14.5330 by changing the saturation by 10% instead.

60.0205, 10.9286,
14.5330

60.0205, 10.9286,
14.5330

181.4044, 10.2819,
27.1358

49.4515, 10.6869,
13.0917

83.1100, 11.1788,
17.3583

39.5868, 10.3593,
11.6148

95.5594, 11.2065,
18.7546

30.4823, 9.9300,
10.0857

108.5750, 11.1760,
20.1467

22.2080, 9.3810,
8.4759

122.1331, 11.0916,
21.5377

14.8573, 8.6875,
6.7402

136.2129, 10.9571,
22.9304

8.5089, 8.0675,
5.9563

150.7956, 10.7755,

0.0000, INF, NaN

24.3266

0.0000, NaN, NaN

165.8645, 10.5496,
25.7280

0.0000, NaN, NaN

■ 60.0205, 10.9286,
14.5330

■ 60.0205, 10.9286,
14.5330

■ 55.6898, 16.2307,
17.2992

■ 64.6157, 5.9430,
11.5054

■ 51.6576, 21.8474,
19.7325

■ 69.4387, 1.2690,
8.2675

■ 47.9694, 27.7309,
21.7495

■ 74.4632, -3.1193,
4.8609

■ 44.6734, 33.7805,
23.2548

■ 79.6665, -7.2494,
1.3165

■ 41.8196, 39.8209,
24.1561

■ 85.0293, -11.1500,
-2.3425

■ 39.4531, 45.5923,
24.3956

■ 90.5354, -14.8481,
-6.0989

■ 37.9515, 49.6818,
24.2553

■ 95.3321, -21.9762,
-0.4810

Harmonies

Analogous

The Analogous color harmony consists of three colors that are next to each other on the color wheel.



60.0219, 16.2394, 7.5590



60.0205, 10.9286, 14.5330



60.0219, 1.9808, 18.1393

Triad

The Triadic color harmony groups three colors that are evenly spaced from another and form a triangle on the color wheel.



60.0219, 10.9262, 14.5339



60.0219, -20.3553, 7.9198



60.0219, 1.5559, -16.9086

Complementary

The Complementary color scheme is a pair of colors which are on the opposite of each other on the color wheel.



60.0205, 10.9286, 14.5330



65.6810, -13.7533, -8.5438

Split Complementary

Split-complementary colors differ from the complementary color scheme. The scheme consists of three colors, the original color and two neighbors of the complement color.



60.0219, -8.2221, -16.7700



60.0205, 10.9286, 14.5330



60.0219, -20.4528, -1.3671

Square

The Square scheme is like the rectangle color scheme, but the four colors are evenly spaced on the color wheel.



60.0219, 10.9262, 14.5339



60.0219, -15.8649, 14.7612



60.0219, -16.1404, -10.7219



60.0219, 10.5979, -11.0747

Rectangle

The Rectangle color scheme consists of four colors that form a rectangle on the color wheel.



60.0205, 10.9286, 14.5330



60.0219, -4.6352, 18.5816



60.0219, -16.1404, -10.7219



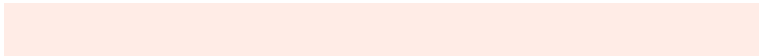
60.0219, -1.7629, -17.5853

Sweetspot

The Sweet Spot groups the original color and five complimentary colors.



60.0219, 10.9262, 14.5339



93.2014, 0.4806, 10.0486



57.3492, 26.5193, -10.5135



42.6868, 0.6143, 4.9413

0.0000, NaN, NaN



46.2646, -2.4686, 2.5136

Same Dimension

The Same Dimension uses a secret algorithm to generate beautiful new colors.



60.0219, 10.9262, 14.5339



75.1379, 19.6195, 21.9818



69.1076, -5.0679, 22.8293



33.2577, 0.0104, 3.4454



30.6276, 39.2528, 19.5597



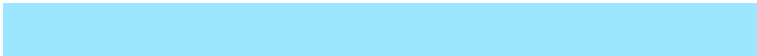
7.5066, 6.2202, 4.7344

Inverse Universe

The Inverse Universe completely reimagines the original color for something new.



65.6810, -13.7533, -8.5438



84.2079, -20.1644, -15.0770



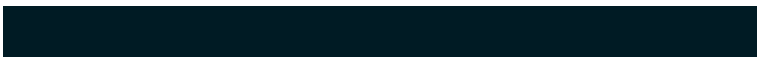
56.0429, 1.8322, -22.5982



34.0602, -3.4591, 0.1819



40.8245, -11.8201, -25.5108



9.4817, -3.4035, -4.5042

Previews

White Background



This preview shows how the HunterLab color 60.0205, 10.9286, 14.5330 looks on a white background.

Color Contrast Check

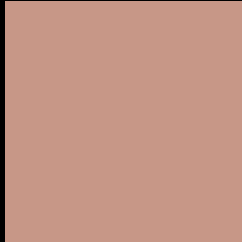
Large Text (above 18pt) WCAG AA × Fail

Any Text WCAG AA × Fail

Large Text (above 18pt) WCAG AAA × Fail

Any Text WCAG AAA × Fail

Black Background



This preview shows how the HunterLab color 60.0205, 10.9286, 14.5330 looks on a black background.

Color Contrast Check

Large Text (above 18pt) WCAG AA ✓ Pass

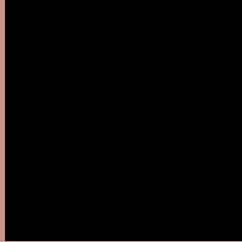
Any Text WCAG AA ✓ Pass

Large Text (above 18pt) WCAG AAA ✓ Pass

Any Text WCAG AAA ✓ Pass

If you want to check with other color combinations, try the [Color Contrast Checker](#).

HunterLab 60.0205, 10.9286, 14.5330 Background



This preview shows how black text looks on a background with the HunterLab color 60.0205, 10.9286, 14.5330.



This preview shows how white text looks on a background with the HunterLab color 60.0205, 10.9286,

Color Blindness Simulation

Color vision deficiency is a very complex topic, and I could not describe the different causes any better than Wikipedia does, so if you want to learn more, you should check out their [article about color blindness](#).

Dichromacy



Original Color

60.0205, 10.9286, 14.5330

Protanopia

60.2330, -3.9630, 12.6234

Deuteranopia

60.1577, 4.3044, 14.9153



Tritanopia

60.0837, 16.4664, 4.9440

Trichromacy



Original Color

60.0205, 10.9286, 14.5330

Protanomaly

60.0936, 1.3842, 13.3304

Deuteranomaly

60.0324, 6.7337, 14.8342

Tritanomaly

59.9802, 14.2878, 8.6875

Monochromacy



Original Color

60.0205, 10.9286, 14.5330

Achromatopsia

60.9293, -3.2510, 3.3104

Achromatomaly

60.3683, 1.6282, 7.6285

CSS Examples

Text

The CSS property to change the color of the text to HunterLab 60.0205, 10.9286, 14.5330 is called "color". The color property can be set on classes, ids or directly on the HTML element.

This example shows how text in the color `rgb(199, 151, 135)` looks like.

```
.text, #text, p{  
    color:rgb(199, 151, 135)  
}
```

If you want to add a text shadow in that color use the text-shadow property, you can generate a text shadow directly with our [CSS Text Shadow Generator](#).

Here you see how black text with a 4 pixel rgb(199, 151, 135) colored shadow looks like.

```
.shadow{ text-shadow: 4px 4px 2px rgb(199, 151, 135) }
```

Border

The CSS property to change the border of an element to HunterLab 60.0205, 10.9286, 14.5330 is called "border". The border property can be set on classes, ids or directly on the HTML element.

This example shows the color as border, it can be applied via the CSS property "border" or "border-color".

```
.border, #border, table{ border:4px solid rgb(199, 151, 135) }
```


If only the border color should be changed use the property `border-color`.

```
.border{ border-color:rgb(199, 151, 135) }
```

If you want to add a box shadow in that color use:

Here you see how a box with a 4 pixel `rgb(199, 151, 135)` colored shadow looks like.

```
.boxshadow{ -moz-box-shadow:4px 4px 4px  
4px rgb(199, 151, 135); -webkit-box-  
shadow:4px 4px 4px 4px rgb(199, 151, 135);  
box-shadow:4px 4px 4px 4px rgb(199, 151,  
135) }
```

Background

The CSS property to change the background color of an element to HunterLab 60.0205, 10.9286, 14.5330 is called "background". The background property can be set on classes, ids or directly on the HTML element.

```
.background, #background, body{  
background: rgb(199, 151, 135) }
```

If only the background color should be changed can be used:

```
.background{ background-color: rgb(199,  
151, 135) }
```

This example shows the color as background, it is applied via the CSS property "background".

To optimize and compress your CSS code, you can use our [online CSS compressor and optimizer](#) based on csstidy. If you want to create a linear or radial gradient as background or border, check our [CSS Gradient Generator](#).

Hey! You found this booklet interesting? Support Converting Colors with the new Membership Option!

The pro membership hides all ads, plus gives you double the colors in the color bucket, and more awesome pro features!

[Learn more, Memberships starting at \\$2.50/m!](#)

**Follow me
on Twitter!**

@ConvertingColor