

Converting Colors

HunterLab(60.0278, 16.6111,
13.4790)

Have a look what the booklet for
HunterLab(60.0278, 16.6111,
13.4790) contains.

HunterLab(60.0935, 16.7213, 13.5988)	3
<i>Conversions</i>	4
<i>Details</i>	6
<i>Harmonies</i>	12
<i>Previews</i>	24
<i>Color Blindness Simulation</i>	28
<i>CSS Examples</i>	31

Color

**HunterLab(60.0935, 16.7213,
13.5988)**

Conversions

Conversions Part 1

Format	Color
Hex	D0938A
RGB	208, 147, 138
RGB Percent	82%, 58%, 54%
CMY	0.1843, 0.4235, 0.4588
CMYK	0.00, 0.29, 0.34, 0.18
HSL	8°, 43%, 68%
HSV	8°, 34%, 82%
XYZ	41.0336, 36.1123, 28.8524
YIQ	164.2130, 39.2450, 10.1330

Conversions

Conversions Part 2

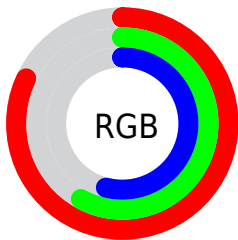
Format	Color
R _Y B	208, 148, 138
Decimal	13669258
CIE Lab	66.61, 21.83, 13.96
CIE LCh	67, 25.916, 32.602
Yxy	36.1140, 0.3871, 0.3407
Android (android.graphics.Color)	4291859338 (0xFFD0938A)
YUV	164.2130, -12.9230, 38.4012
Hunter-Lab	60.0935, 16.7213, 13.5988

Details

The HunterLab color **60.0935, 16.7213, 13.5988** is a light color, and the websafe version is hex **CC9999**. A complement of this color would be **71.2758, -18.8257, -6.0494**, and the grayscale version is **61.0580, -3.2579, 3.3174**.

A 20% lighter version of the original color is **81.7281, 13.2037, 14.8339**, and **39.6809, 15.5475, 10.9284** is the 20% darker color. If you saturate the color by 10%, you get **55.1073, 23.6361, 16.1968**, and if you desaturate by 10%, it is **65.4701, 10.1121, 10.8966**.

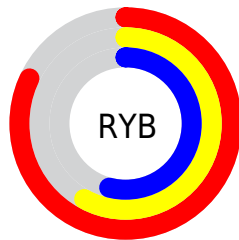
Distribution



Red (82%)

Green (58%)

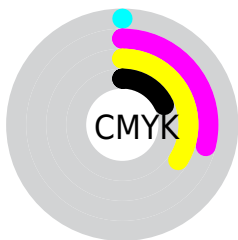
Blue (54%)



Red (82%)

Yellow (58%)

Blue (54%)

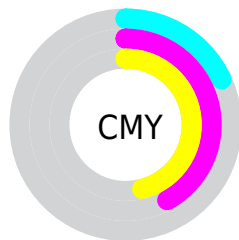


Cyan (0%)

Magenta (29%)

Yellow (34%)

Black (18%)



Cyan (18%)

Magenta (42%)

Yellow (46%)

Brightness & Saturation Gradients

These gradients show how the HunterLab color 60.0935, 16.7213, 13.5988 changes by changing the brightness by 10 percent. The first figure shows a shift by +10% for each color and the second figure -10%.

Similar to the brightness gradients but the following saturation gradients show a change of the HunterLab color 60.0935, 16.7213, 13.5988 by changing the saturation by 10% instead.

60.0935, 16.7213,
13.5988

60.0935, 16.7213,
13.5988

181.5099, 18.2191,
25.6127

49.5200, 16.1934,
12.2445

83.1913, 17.5079,
16.2683

39.6503, 15.5663,
10.8625

95.6447, 17.7885,
17.5936

30.5406, 14.8229,
9.4385

108.6640, 18.0020,
18.9185

22.2604, 13.9451,
7.9476

122.2257, 18.1534,
20.2455

14.9032, 12.9124,
6.3471

136.3088, 18.2473,
21.5770

8.5524, 11.9639,
5.9867

150.8949, 18.2874,

0.0000, INF, NaN

22.9145

0.0000, NaN, NaN

165.9670, 18.2771,
24.2594

0.0000, NaN, NaN

■ 60.0935, 16.7213,
13.5988

■ 60.0935, 16.7213,
13.5988

■ 55.1073, 23.6361,
16.1968

■ 65.4701, 10.1121,
10.8966

■ 50.5743, 30.7912,
18.6155

■ 71.1765, 3.8332,
8.1339

■ 46.5730, 38.0208,
20.7514

■ 77.1679, -2.1315,
5.3401

■ 43.1850, 45.0386,
22.4708

■ 83.4069, -7.8105,
2.5312

■ 40.4858, 51.4276,
23.6311

■ 89.8628, -13.2370,
-0.2841

■ 38.5257, 56.6951,
24.1354

■ 95.9947, -19.5628,
0.3757

■ 37.6598, 59.2204,
24.2425

Harmonies

Analogous

The Analogous color harmony consists of three colors that are next to each other on the color wheel.



60.0949, 20.6865, 4.2248



60.0935, 16.7213, 13.5988



60.0949, 7.3818, 19.1997

Triad

The Triadic color harmony groups three colors that are evenly spaced from another and form a triangle on the color wheel.



60.0949, 16.7187, 13.5998



60.0949, -21.7257, 12.2233



60.0949, -2.1956, -21.9638

Complementary

The Complementary color scheme is a pair of colors which are on the opposite of each other on the color wheel.



60.0935, 16.7213, 13.5988



71.2758, -18.8257, -6.0494

Split Complementary

Split-complementary colors differ from the complementary color scheme. The scheme consists of three colors, the original color and two neighbors of the complement color.



60.0949, -13.1150, -18.7327



60.0935, 16.7213, 13.5988



60.0949, -23.8718, 2.3016

Square

The Square scheme is like the rectangle color scheme, but the four colors are evenly spaced on the color wheel.



60.0949, 16.7187, 13.5998



60.0949, -14.7408, 18.5170



60.0949, -20.8382, -9.2950



60.0949, 9.2622, -17.4446

Rectangle

The Rectangle color scheme consists of four colors that form a rectangle on the color wheel.



60.0935, 16.7213, 13.5988



60.0949, -0.3163, 20.7111



60.0949, -20.8382, -9.2950



60.0949, -6.0494, -21.7484

Sweetspot

The Sweet Spot groups the original color and five complimentary colors.



60.0949, 16.7187, 13.5998



92.2489, 2.1276, 9.0011



59.7909, 31.2225, -16.6952



42.1870, 1.4838, 4.3954

0.0000, NaN, NaN



46.2646, -2.4686, 2.5136

Same Dimension

The Same Dimension uses a secret algorithm to generate beautiful new colors.



60.0949, 16.7187, 13.5998



71.3275, 26.9506, 19.3726



69.5418, -0.6535, 22.3395



34.7129, 0.5966, 3.2749



29.8635, 46.3186, 19.2126



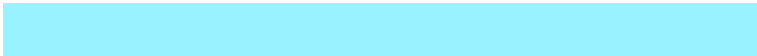
7.6239, 9.2157, 4.8592

Inverse Universe

The Inverse Universe completely reimagines the original color for something new.



71.2758, -18.8257, -6.0494



87.9914, -26.3791, -9.9901



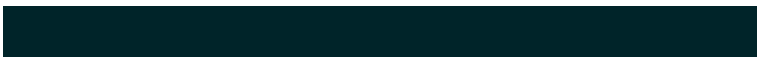
60.6695, -2.3371, -20.9743



36.2447, -4.2153, 0.5957



48.5772, -20.7956, -15.8256



11.8046, -5.3229, -3.2641

Previews

White Background



This preview shows how the HunterLab color 60.0935, 16.7213, 13.5988 looks on a white background.

Color Contrast Check

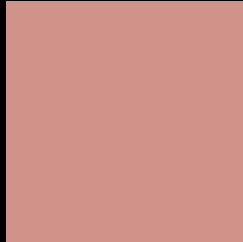
Large Text (above 18pt) WCAG AA × Fail

Any Text WCAG AA × Fail

Large Text (above 18pt) WCAG AAA × Fail

Any Text WCAG AAA × Fail

Black Background



This preview shows how the HunterLab color 60.0935, 16.7213, 13.5988 looks on a black background.

Color Contrast Check

Large Text (above 18pt) WCAG AA ✓ Pass

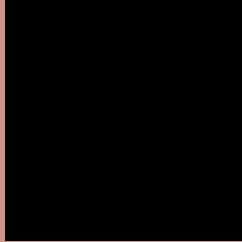
Any Text WCAG AA ✓ Pass

Large Text (above 18pt) WCAG AAA ✓ Pass

Any Text WCAG AAA ✓ Pass

If you want to check with other color combinations, try the [Color Contrast Checker](#).

HunterLab 60.0935, 16.7213, 13.5988 Background



This preview shows how black text looks on a background with the HunterLab color 60.0935, 16.7213, 13.5988.



This preview shows how white text looks on a background with the HunterLab color 60.0935, 16.7213,

Color Blindness Simulation

Color vision deficiency is a very complex topic, and I could not describe the different causes any better than Wikipedia does, so if you want to learn more, you should check out their [article about color blindness](#).

Dichromacy



Original Color

60.0935, 16.7213, 13.5988

Protanopia

60.2918, -3.4562, 10.3487

Deuteranopia

60.0993, 4.2022, 14.1276



Tritanopia

60.0123, 21.2950, 6.7149

Trichromacy



Original Color

60.0935, 16.7213, 13.5988

Protanomaly

60.1368, 3.2296, 11.4919

Deuteranomaly

60.1587, 8.6972, 13.8966

Tritanomaly

59.9800, 19.5644, 9.1953

Monochromacy



Original Color

60.0935, 16.7213, 13.5988

Achromatopsia

60.9293, -3.2510, 3.3104

Achromatomaly

60.4347, 3.4209, 6.8765

CSS Examples

Text

The CSS property to change the color of the text to HunterLab 60.0935, 16.7213, 13.5988 is called "color". The color property can be set on classes, ids or directly on the HTML element.

This example shows how text in the color `rgb(208, 147, 138)` looks like.

```
.text, #text, p{  
    color:rgb(208, 147, 138)  
}
```

If you want to add a text shadow in that color use the text-shadow property, you can generate a text shadow directly with our [CSS Text Shadow Generator](#).

Here you see how black text with a 4 pixel rgb(208, 147, 138) colored shadow looks like.

```
.shadow{ text-shadow: 4px 4px 2px rgb(208, 147, 138) }
```

Border

The CSS property to change the border of an element to HunterLab 60.0935, 16.7213, 13.5988 is called "border". The border property can be set on classes, ids or directly on the HTML element.

This example shows the color as border, it can be applied via the CSS property "border" or "border-color".

```
.border, #border, table{ border:4px solid rgb(208, 147, 138) }
```


If only the border color should be changed use the property `border-color`.

```
.border{ border-color:rgb(208, 147, 138) }
```

If you want to add a box shadow in that color use:

Here you see how a box with a 4 pixel `rgb(208, 147, 138)` colored shadow looks like.

```
.boxshadow{ -moz-box-shadow:4px 4px 4px  
4px rgb(208, 147, 138); -webkit-box-  
shadow:4px 4px 4px 4px rgb(208, 147, 138);  
box-shadow:4px 4px 4px 4px rgb(208, 147,  
138) }
```

Background

The CSS property to change the background color of an element to HunterLab 60.0935, 16.7213, 13.5988 is called "background". The background property can be set on classes, ids or directly on the HTML element.

```
.background, #background, body{  
background: rgb(208, 147, 138) }
```

If only the background color should be changed can be used:

```
.background{ background-color: rgb(208,  
147, 138) }
```

This example shows the color as background, it is applied via the CSS property "background".

To optimize and compress your CSS code, you can use our [online CSS compressor and optimizer](#) based on csstidy. If you want to create a linear or radial gradient as background or border, check our [CSS Gradient Generator](#).

Hey! You found this booklet interesting? Support Converting Colors with the new Membership Option!

The pro membership hides all ads, plus gives you double the colors in the color bucket, and more awesome pro features!

[Learn more, Memberships starting at \\$2.50/m!](#)

**Follow me
on Twitter!**

@ConvertingColor