

# Converting Colors

HunterLab(60.0598, 6.2497,  
8.2319)

Have a look what the booklet for  
HunterLab(60.0598, 6.2497, 8.2319)  
contains.

<b>HunterLab(60.0967, 6.3829, 8.2579)</b> .....	3
<b><i>Conversions</i></b> .....	4
<b><i>Details</i></b> .....	6
<b><i>Harmonies</i></b> .....	12
<b><i>Previews</i></b> .....	24
<b><i>Color Blindness Simulation</i></b> .....	28
<b><i>CSS Examples</i></b> .....	31

# Color

**HunterLab(60.0967, 6.3829,  
8.2579)**

# Conversions

## Conversions Part 1

Format	Color
Hex	BA9B97
RGB	186, 155, 151
RGB Percent	73%, 61%, 59%
CMY	0.2706, 0.3921, 0.4078
CMYK	0.00, 0.17, 0.19, 0.27
HSL	7°, 20%, 66%
HSV	7°, 19%, 73%
XYZ	37.5569, 36.1161, 34.2698
YIQ	163.8130, 19.7600, 5.3280

# Conversions

## Conversions Part 2

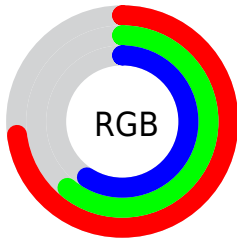
<b>Format</b>	<b>Color</b>
<b>RYB</b>	186, 156, 151
Decimal	12229527
CIELab	66.61, 10.83, 6.39
CIElCh	67, 12.574, 30.520
Yxy	36.1178, 0.3479, 0.3346
Android (android.graphics.Color)	4290419607 (0xFFBA9B97)
YUV	163.8130, -6.3168, 19.4580
Hunter-Lab	60.0967, 6.3829, 8.2579

# Details

The HunterLab color  $60.0967, 6.3829, 8.2579$  is a light color, and the websafe version is hex  $CC9999$ . A complement of this color would be  $66.0147, -11.8211, -1.2515$ , and the grayscale version is  $60.8730, -3.2480, 3.3073$ .

A 20% lighter version of the original color is  $82.9976, 6.2425, 9.9924$ , and  $39.6564, 6.0693, 6.5166$  is the 20% darker color. If you saturate the color by 10%, you get  $55.1780, 12.1573, 10.6017$ , and if you desaturate by 10%, it is  $65.2938, 0.8864, 5.8952$ .

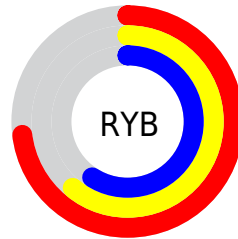
# Distribution



Red (73%)

Green (61%)

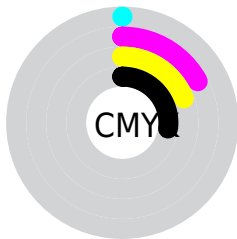
Blue (59%)



Red (73%)

Yellow (61%)

Blue (59%)

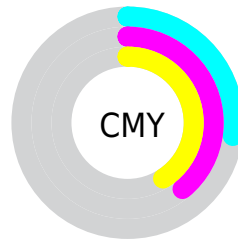


Cyan (0%)

Magenta (17%)

Yellow (19%)

Black (27%)



Cyan (27%)

Magenta (39%)

Yellow (41%)

# Brightness & Saturation Gradients

These gradients show how the HunterLab color 60.0967, 6.3829, 8.2579 changes by changing the brightness by 10 percent. The first figure shows a shift by +10% for each color and the second figure -10%.

Similar to the brightness gradients but the following saturation gradients show a change of the HunterLab color 60.0967, 6.3829, 8.2579 by changing the saturation by 10% instead.



60.0967, 6.3829,  
8.2579

60.0967, 6.3829,  
8.2579

181.5145, 3.9521,  
17.2623

49.5229, 6.3839,  
7.3424

83.1948, 6.1828,  
10.1366

39.6530, 6.3122,  
6.4377

95.6483, 5.9994,  
11.1005

30.5431, 6.1546,  
5.5404

108.6678, 5.7658,  
12.0820

22.2627, 5.8955,  
4.6430

122.2296, 5.4856,  
13.0815

14.9051, 5.5121,  
3.7315

136.3130, 5.1617,  
14.0993

8.5542, 5.1778,  
3.5598

150.8991, 4.7967,

0.0000, NaN, NaN

15.1353

0.0000, NaN, NaN

165.9714, 4.3929,  
16.1897

0.0000, NaN, NaN

■ 60.0967, 6.3829,  
8.2579

■ 60.0967, 6.3829,  
8.2579

■ 55.1780, 12.1573,  
10.6017

■ 65.2938, 0.8864,  
5.8952

■ 50.5799, 18.2136,  
12.8944

■ 70.7273, -4.3450,  
3.5271

■ 46.3597, 24.5086,  
15.0882

■ 76.3682, -9.3405,  
1.1628

■ 42.5831, 30.9338,  
17.1077

■ 82.1916, -14.1296,  
-1.1943

■ 39.3228, 37.2817,  
18.8474

■ 88.1771, -18.7408,  
-3.5436

■ 36.6512, 43.2252,  
20.1793

■ 94.0431, -24.7055,  
-2.1296

■ 34.6263, 48.3401,  
20.9846

■ 94.4347, -25.2733,  
-1.6508

■ 33.2652, 52.1786,  
21.2987

■ 33.1446, 52.5236,  
21.3431

# Harmonies

## Analogous

The Analogous color harmony consists of three colors that are next to each other on the color wheel.



60.0981, 7.9769, 3.3644



60.0967, 6.3829, 8.2579



60.0981, 2.1987, 11.5462

# Triad

The Triadic color harmony groups three colors that are evenly spaced from another and form a triangle on the color wheel.



60.0981, 6.3809, 8.2589



60.0981, -12.3267, 8.1114



60.0981, -3.1119, -7.9370

# Complementary

The Complementary color scheme is a pair of colors which are on the opposite of each other on the color wheel.



60.0967, 6.3829, 8.2579



66.0147, -11.8211, -1.2515

# Split Complementary

Split-complementary colors differ from the complementary color scheme. The scheme consists of three colors, the original color and two neighbors of the complement color.



60.0981, -8.4337, -6.3784



60.0967, 6.3829, 8.2579



60.0981, -13.6339, 3.1780

# Square

The Square scheme is like the rectangle color scheme, but the four colors are evenly spaced on the color wheel.



60.0981, 6.3809, 8.2589



60.0981, -8.5974, 11.4667



60.0981, -12.2346, -2.1841



60.0981, 2.3743, -6.2704



# Rectangle

The Rectangle color scheme consists of four colors that form a rectangle on the color wheel.



60.0967, 6.3829, 8.2579



60.0981, -1.4204, 12.5492



60.0981, -12.2346, -2.1841



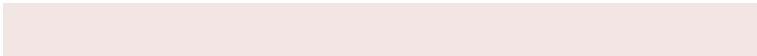
60.0981, -4.9787, -7.7715

# Sweetspot

The Sweet Spot groups the original color and five complimentary colors.



60.0981, 6.3809, 8.2589



89.8638, -0.7543, 7.0704



59.9757, 13.5309, -6.8249



41.9483, -0.1349, 3.4159



97.7295, -5.2146, 5.3098



44.2712, -2.3622, 2.4053



# Same Dimension

The Same Dimension uses a secret algorithm to generate beautiful new colors.



60.0981, 6.3809, 8.2589



77.8380, 12.0921, 12.5639



64.9453, -2.0981, 13.2531



30.2874, 0.5408, 2.8025



27.2929, 42.7293, 17.5658



5.6323, 6.4674, 3.5838



# Inverse Universe

The Inverse Universe completely reimagines the original color for something new.



66.0147, -11.8211, -1.2515



87.6651, -18.2052, -3.2473



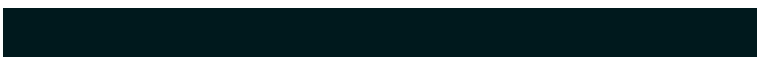
60.8566, -3.6020, -7.8224



31.6709, -3.7039, 0.5813



45.2687, -20.0086, -13.3892



8.7897, -4.1222, -2.0877



# Previews

## White Background



This preview shows how the HunterLab color 60.0967, 6.3829, 8.2579 looks on a white background.

## Color Contrast Check

Large Text (above 18pt) WCAG AA × Fail

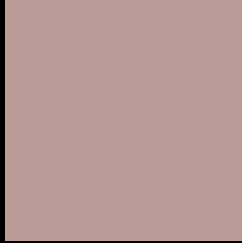
Any Text WCAG AA × Fail

Large Text (above 18pt) WCAG AAA × Fail

Any Text WCAG AAA × Fail



# Black Background



This preview shows how the HunterLab color 60.0967, 6.3829, 8.2579 looks on a black background.

## Color Contrast Check

Large Text (above 18pt) WCAG AA ✓ Pass

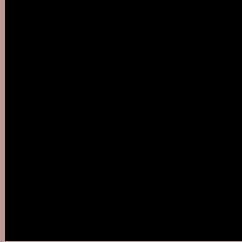
Any Text WCAG AA ✓ Pass

Large Text (above 18pt) WCAG AAA ✓ Pass

Any Text WCAG AAA ✓ Pass

If you want to check with other color combinations, try the [Color Contrast Checker](#).

## HunterLab 60.0967, 6.3829, 8.2579 Background



This preview shows how black text looks on a background with the HunterLab color 60.0967, 6.3829, 8.2579.



This preview shows how white text looks on a background with the HunterLab color 60.0967, 6.3829,

8.2579.

# Color Blindness Simulation

Color vision deficiency is a very complex topic, and I could not describe the different causes any better than Wikipedia does, so if you want to learn more, you should check out their [article about color blindness](#).

## Dichromacy



### Original Color

60.0967, 6.3829, 8.2579

### Protanopia

60.3512, -2.7668, 6.6747

### Deuteranopia

60.2440, 4.0075, 8.3777



## Tritanopia

60.1585, 10.2099, 2.1647

# Trichromacy



## Original Color

60.0967, 6.3829, 8.2579

## Protanomaly

60.1066, 0.7923, 6.8948

## Deuteranomaly

60.0654, 4.8489, 8.1968

## Tritanomaly

60.1781, 8.5732, 4.4647

# Monochromacy



## Original Color

60.0967, 6.3829, 8.2579

## Achromatopsia

60.9293, -3.2510, 3.3104

## Achromatomaly

60.6330, -0.0783, 5.2860

# CSS Examples

## Text

The CSS property to change the color of the text to HunterLab 60.0967, 6.3829, 8.2579 is called "color". The color property can be set on classes, ids or directly on the HTML element.

This example shows how text in the color `rgb(186, 155, 151)` looks like.

```
.text, #text, p{  
    color:rgb(186, 155, 151)  
}
```

If you want to add a text shadow in that color use the text-shadow property, you can generate a text shadow directly with our [CSS Text Shadow Generator](#).

Here you see how black text with a 4 pixel rgb(186, 155, 151) colored shadow looks like.

```
.shadow{ text-shadow: 4px 4px 2px rgb(186, 155, 151) }
```

## Border

The CSS property to change the border of an element to HunterLab 60.0967, 6.3829, 8.2579 is called "border".

The border property can be set on classes, ids or directly on the HTML element.

This example shows the color as border, it can be applied via the CSS property "border" or "border-color".

```
.border, #border, table{ border:4px solid rgb(186, 155, 151) }
```



If only the border color should be changed use the property `border-color`.

```
.border{ border-color:rgb(186, 155, 151) }
```

If you want to add a box shadow in that color use:

Here you see how a box with a 4 pixel `rgb(186, 155, 151)` colored shadow looks like.

```
.boxshadow{ -moz-box-shadow:4px 4px 4px  
4px rgb(186, 155, 151); -webkit-box-  
shadow:4px 4px 4px 4px rgb(186, 155, 151);  
box-shadow:4px 4px 4px 4px rgb(186, 155,  
151) }
```

# Background

The CSS property to change the background color of an element to HunterLab 60.0967, 6.3829, 8.2579 is called "background". The background property can be set on classes, ids or directly on the HTML element.

```
.background, #background, body{  
background: rgb(186, 155, 151) }
```

If only the background color should be changed can be used:

```
.background{ background-color: rgb(186,  
155, 151) }
```

This example shows the color as background, it is applied via the CSS property "background".

To optimize and compress your CSS code, you can use our [online CSS compressor and optimizer](#) based on csstidy. If you want to create a linear or radial gradient as background or border, check our [CSS Gradient Generator](#).

Hey! You found this booklet interesting? Support Converting Colors with the new Membership Option!

The pro membership hides all ads, plus gives you double the colors in the color bucket, and more awesome pro features!

**[Learn more, Memberships starting at \\$2.50/m!](#)**

**Follow me  
on Twitter!**

@ConvertingColor