

Converting Colors

HunterLab(60.0615, 7.5146,
13.6670)

Have a look what the booklet for
HunterLab(60.0615, 7.5146,
13.6670) contains.

HunterLab(60.1031, 7.1090, 13.8130)	3
<i>Conversions</i>	4
<i>Details</i>	6
<i>Harmonies</i>	12
<i>Previews</i>	24
<i>Color Blindness Simulation</i>	28
<i>CSS Examples</i>	31

Color

**HunterLab(60.1031, 7.1090,
13.8130)**

Conversions

Conversions Part 1

Format	Color
Hex	C09A89
RGB	192, 154, 137
RGB Percent	75%, 60%, 54%
CMY	0.2471, 0.3961, 0.4627
CMYK	0.00, 0.20, 0.29, 0.25
HSL	19°, 30%, 65%
HSV	19°, 29%, 75%
XYZ	37.8092, 36.1238, 28.6467
YIQ	163.4240, 28.1050, 2.7690

Conversions

Conversions Part 2

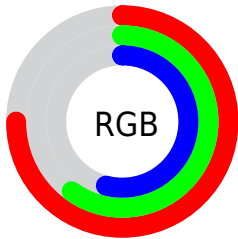
Format	Color
R_{YB}	192, 162, 137
Decimal	12622473
CIE _{Lab}	66.62, 11.63, 14.28
CIE _{LCh}	67, 18.418, 50.860
Yxy	36.1255, 0.3686, 0.3522
Android (android.graphics.Color)	4290812553 (0xFFC09A89)
YUV	163.4240, -13.0270, 25.0612
Hunter-Lab	60.1031, 7.1090, 13.8130

Details

The HunterLab color **60.1031, 7.1090, 13.8130** is a light color, and the websafe version is hex **CC9999**. A complement of this color would be **63.0737, -10.8739, -8.2025**, and the grayscale version is **60.7376, -3.2408, 3.3000**.

A 20% lighter version of the original color is **83.0477, 7.0934, 16.5187**, and **39.7390, 7.0501, 11.1575** is the 20% darker color. If you saturate the color by 10%, you get **56.1099, 11.5077, 16.7306**, and if you desaturate by 10%, it is **64.3037, 3.0124, 10.5938**.

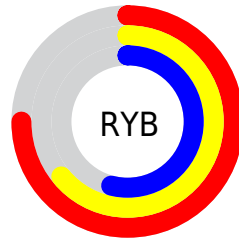
Distribution



Red (75%)

Green (60%)

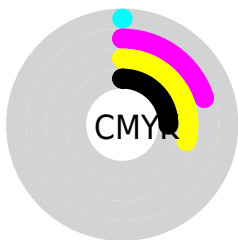
Blue (54%)



Red (75%)

Yellow (64%)

Blue (54%)

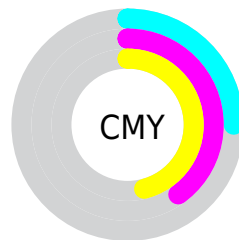


Cyan (0%)

Magenta (20%)

Yellow (29%)

Black (25%)



Cyan (25%)

Magenta (40%)

Yellow (46%)

Brightness & Saturation Gradients

These gradients show how the HunterLab color 60.1031, 7.1090, 13.8130 changes by changing the brightness by 10 percent. The first figure shows a shift by +10% for each color and the second figure -10%.

Similar to the brightness gradients but the following saturation gradients show a change of the HunterLab color 60.1031, 7.1090, 13.8130 by changing the saturation by 10% instead.

60.1031, 7.1090,
13.8130

60.1031, 7.1090,
13.8130

181.5238, 4.9679,
25.9580

49.5289, 7.0702,
12.4393

83.2020, 6.9821,
16.5171

39.6586, 6.9566,
11.0363

95.6558, 6.8330,
17.8582

30.5482, 6.7543,
9.5891

108.6756, 6.6325,
19.1980

22.2673, 6.4474,
8.0720

122.2378, 6.3840,
20.5393

14.9092, 6.0122,
6.4410

136.3214, 6.0908,
21.8845

8.5580, 5.6228,
5.9906

150.9079, 5.7556,

0.0000, NaN, NaN

23.2351

0.0000, NaN, NaN

165.9804, 5.3806,
24.5926

0.0000, NaN, NaN

■ 60.1031, 7.1090,
13.8130

■ 60.1031, 7.1090,
13.8130

■ 56.1099, 11.5077,
16.7306

■ 64.3037, 3.0124,
10.5938

■ 52.3469, 16.2241,
19.2828

■ 68.6845, -0.7949,
7.1204

■ 48.8462, 21.2457,
21.3989

■ 73.2270, -4.3397,
3.4340

■ 45.6424, 26.5317,
22.9996

■ 77.9145, -7.6477,
-0.4333

■ 42.7719, 31.9958,
24.0079

■ 82.7328, -10.7443,
-4.4560

■ 40.2710, 37.4924,
24.3684

■ 87.6696, -13.6530,
-8.6137

■ 38.1660, 42.7887,
24.1507

■ 92.1186, -19.7459,
-4.4747

■ 37.9098, 43.4650,
24.1208

■ 94.8401, -23.7797,
-1.1210

Harmonies

Analogous

The Analogous color harmony consists of three colors that are next to each other on the color wheel.



60.1045, 12.3011, 8.3881



60.1031, 7.1090, 13.8130



60.1045, -0.6761, 16.3155

Triad

The Triadic color harmony groups three colors that are evenly spaced from another and form a triangle on the color wheel.



60.1045, 7.1068, 13.8139



60.1045, -18.0476, 5.6139



60.1045, 2.5282, -12.5610

Complementary

The Complementary color scheme is a pair of colors which are on the opposite of each other on the color wheel.



60.1031, 7.1090, 13.8130



63.0737, -10.8739, -8.2025

Split Complementary

Split-complementary colors differ from the complementary color scheme. The scheme consists of three colors, the original color and two neighbors of the complement color.



60.1045, -5.7031, -13.5664



60.1031, 7.1090, 13.8130



60.1045, -17.2924, -2.3384

Square

The Square scheme is like the rectangle color scheme, but the four colors are evenly spaced on the color wheel.



60.1045, 7.1068, 13.8139



60.1045, -14.9964, 12.0181



60.1045, -12.8752, -9.6121



60.1045, 9.5604, -7.0256

Rectangle

The Rectangle color scheme consists of four colors that form a rectangle on the color wheel.



60.1031, 7.1090, 13.8130



60.1045, -6.1623, 16.2558



60.1045, -12.8752, -9.6121



60.1045, -0.2001, -13.4667

Sweetspot

The Sweet Spot groups the original color and five complimentary colors.



60.1045, 7.1068, 13.8139



92.1555, -0.8230, 9.8252



56.7565, 21.6688, -7.2852



42.2775, -0.0421, 4.8766



98.8636, -5.2751, 5.3714



45.2661, -2.4153, 2.4594

Same Dimension

The Same Dimension uses a secret algorithm to generate beautiful new colors.



60.1045, 7.1068, 13.8139



77.6979, 13.0101, 20.9652



67.8680, -6.2590, 21.0344



32.5185, -0.2506, 3.5112



31.2947, 35.0920, 19.8980



7.4047, 4.9588, 4.6496

Inverse Universe

The Inverse Universe completely reimagines the original color for something new.



63.0737, -10.8739, -8.2025



82.4631, -15.9500, -14.4339



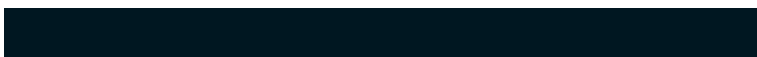
55.0494, 2.3057, -19.7494



32.9939, -3.1118, -0.0027



37.3176, -7.5011, -30.4510



8.4825, -2.6169, -4.9532

Previews

White Background



This preview shows how the HunterLab color 60.1031, 7.1090, 13.8130 looks on a white background.

Color Contrast Check

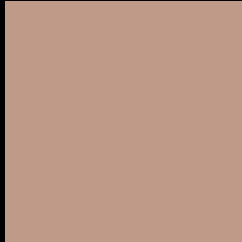
Large Text (above 18pt) WCAG AA × Fail

Any Text WCAG AA × Fail

Large Text (above 18pt) WCAG AAA × Fail

Any Text WCAG AAA × Fail

Black Background



This preview shows how the HunterLab color 60.1031, 7.1090, 13.8130 looks on a black background.

Color Contrast Check

Large Text (above 18pt) WCAG AA ✓ Pass

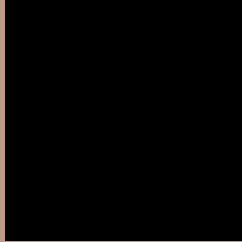
Any Text WCAG AA ✓ Pass

Large Text (above 18pt) WCAG AAA ✓ Pass

Any Text WCAG AAA ✓ Pass

If you want to check with other color combinations, try the [Color Contrast Checker](#).

HunterLab 60.1031, 7.1090, 13.8130 Background



This preview shows how black text looks on a background with the HunterLab color 60.1031, 7.1090, 13.8130.



This preview shows how white text looks on a background with the HunterLab color 60.1031, 7.1090,

Color Blindness Simulation

Color vision deficiency is a very complex topic, and I could not describe the different causes any better than Wikipedia does, so if you want to learn more, you should check out their [article about color blindness](#).

Dichromacy



Original Color

60.1031, 7.1090, 13.8130

Protanopia

60.2576, -3.8279, 12.2688

Deuteranopia

60.1231, 4.3294, 13.7844



Tritanopia

60.0195, 13.7297, 3.4572

Trichromacy



Original Color

60.1031, 7.1090, 13.8130

Protanomaly

60.1288, 0.1368, 12.5886

Deuteranomaly

60.0563, 5.5358, 13.7384

Tritanomaly

59.9187, 11.5170, 7.3024

Monochromacy



Original Color

60.1031, 7.1090, 13.8130

Achromatopsia

60.5188, -3.2291, 3.2881

Achromatomaly

60.3932, 0.2982, 7.2058

CSS Examples

Text

The CSS property to change the color of the text to HunterLab 60.1031, 7.1090, 13.8130 is called "color". The color property can be set on classes, ids or directly on the HTML element.

This example shows how text in the color `rgb(192, 154, 137)` looks like.

```
.text, #text, p{  
    color:rgb(192, 154, 137)  
}
```

If you want to add a text shadow in that color use the text-shadow property, you can generate a text shadow directly with our [CSS Text Shadow Generator](#).

Here you see how black text with a 4 pixel rgb(192, 154, 137) colored shadow looks like.

```
.shadow{ text-shadow: 4px 4px 2px rgb(192, 154, 137) }
```

Border

The CSS property to change the border of an element to HunterLab 60.1031, 7.1090, 13.8130 is called "border". The border property can be set on classes, ids or directly on the HTML element.

This example shows the color as border, it can be applied via the CSS property "border" or "border-color".

```
.border, #border, table{ border:4px solid rgb(192, 154, 137) }
```


If only the border color should be changed use the property `border-color`.

```
.border{ border-color:rgb(192, 154, 137) }
```

If you want to add a box shadow in that color use:

Here you see how a box with a 4 pixel `rgb(192, 154, 137)` colored shadow looks like.

```
.boxshadow{ -moz-box-shadow:4px 4px 4px  
4px rgb(192, 154, 137); -webkit-box-  
shadow:4px 4px 4px 4px rgb(192, 154, 137);  
box-shadow:4px 4px 4px 4px rgb(192, 154,  
137) }
```

Background

The CSS property to change the background color of an element to HunterLab 60.1031, 7.1090, 13.8130 is called "background". The background property can be set on classes, ids or directly on the HTML element.

```
.background, #background, body{  
background: rgb(192, 154, 137) }
```

If only the background color should be changed can be used:

```
.background{ background-color: rgb(192,  
154, 137) }
```

This example shows the color as background, it is applied via the CSS property "background".

To optimize and compress your CSS code, you can use our [online CSS compressor and optimizer](#) based on csstidy. If you want to create a linear or radial gradient as background or border, check our [CSS Gradient Generator](#).

Hey! You found this booklet interesting? Support Converting Colors with the new Membership Option!

The pro membership hides all ads, plus gives you double the colors in the color bucket, and more awesome pro features!

[Learn more, Memberships starting at \\$2.50/m!](#)

**Follow me
on Twitter!**

@ConvertingColor