

Converting Colors

HunterLab(60.1061, 32.9494,
5.7054)

Have a look what the booklet for
HunterLab(60.1061, 32.9494,
5.7054) contains.

HunterLab(60.1061, 32.9494, 5.7054)	3
<i>Conversions</i>	4
<i>Details</i>	6
<i>Harmonies</i>	12
<i>Previews</i>	24
<i>Color Blindness Simulation</i>	28
<i>CSS Examples</i>	31

Color

**HunterLab(60.1061, 32.9494,
5.7054)**

Conversions

Conversions Part 1

Format	Color
Hex	E3879E
RGB	227, 135, 158
RGB Percent	89%, 53%, 62%
CMY	0.1098, 0.4706, 0.3804
CMYK	0.00, 0.41, 0.30, 0.11
HSL	345°, 62%, 71%
HSV	345°, 41%, 89%
XYZ	46.5141, 36.1274, 36.8695
YIQ	165.1300, 47.4490, 26.6570

Conversions

Conversions Part 2

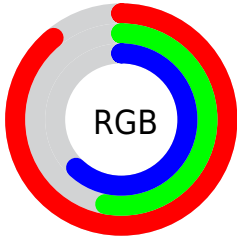
Format	Color
R_{YB}	227, 135, 158
Decimal	14911390
CIE _{Lab}	66.62, 37.91, 3.04
CIE _{LCh}	67, 38.031, 4.591
Yxy	36.1292, 0.3892, 0.3023
Android (android.graphics.Color)	4293101470 (0xFFE3879E)
YUV	165.1300, -3.5151, 54.2600
Hunter-Lab	60.1061, 32.9494, 5.7054

Details

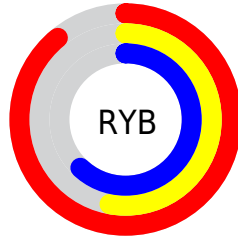
The HunterLab color **60.1061, 32.9494, 5.7054** is a light color, and the websafe version is hex **FF9999**. A complement of this color would be **80.2805, -32.9613, 6.6988**, and the grayscale version is **61.3952, -3.2759, 3.3357**.

A 20% lighter version of the original color is **79.3039, 22.5215, 2.1970**, and **39.6019, 30.3514, 4.1086** is the 20% darker color. If you saturate the color by 10%, you get **54.6893, 42.3969, 7.1330**, and if you desaturate by 10%, it is **66.1670, 23.3991, 4.8269**.

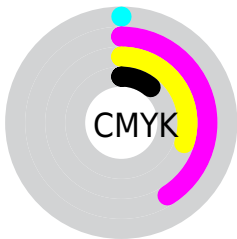
Distribution



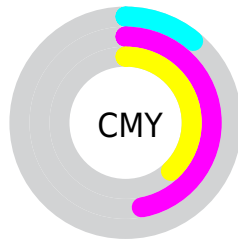
- Red (89%)
- Green (53%)
- Blue (62%)



- Red (89%)
- Yellow (53%)
- Blue (62%)



- Cyan (0%)
- Magenta (41%)
- Yellow (30%)
- Black (11%)



- Cyan (11%)
- Magenta (47%)
- Yellow (38%)

Brightness & Saturation Gradients

These gradients show how the HunterLab color 60.1061, 32.9494, 5.7054 changes by changing the brightness by 10 percent. The first figure shows a shift by +10% for each color and the second figure -10%.

Similar to the brightness gradients but the following saturation gradients show a change of the HunterLab color 60.1061, 32.9494, 5.7054 by changing the saturation by 10% instead.

60.1061, 32.9494,
5.7054

60.1061, 32.9494,
5.7054

181.5282, 39.8177,
13.4401

49.5318, 31.7341,
4.9721

83.2054, 35.0509,
7.2540

39.6613, 30.4027,
4.2640

95.6594, 35.9602,
8.0660

30.5507, 28.9445,
3.5823

108.6794, 36.7841,
8.9028

22.2695, 27.3599,
2.9258

122.2417, 37.5289,
9.7638

14.9111, 25.6800,
2.2916

136.3254, 38.2001,
10.6486

8.5599, 24.3825,
1.9400

150.9120, 38.8026,

0.0000, INF, NaN

11.5566

0.0000, NaN, NaN

165.9847, 39.3405,
12.4872

0.0000, NaN, NaN

■ 60.1061, 32.9494,
5.7054

■ 60.1061, 32.9494,
5.7054

■ 54.6893, 42.3969,
7.1330

■ 66.1670, 23.3991,
4.8269

■ 50.0309, 51.3634,
9.1502

■ 72.7638, 13.9698,
4.4215

■ 46.2536, 59.2593,
11.7355

■ 79.8124, 4.7565,
4.4145

■ 43.4558, 65.3697,
14.7556

■ 87.2439, -4.2115,
4.7369

■ 41.6718, 69.0909,
17.9510

■ 95.0033, -12.9405,
5.3310

■ 40.7722, 70.5419,
20.7788

■ 97.5043, -14.1296,
2.3057

Harmonies

Analogous

The Analogous color harmony consists of three colors that are next to each other on the color wheel.



60.1076, 29.2393, -11.6500



60.1061, 32.9494, 5.7054



60.1076, 26.1199, 18.3769

Triad

The Triadic color harmony groups three colors that are evenly spaced from another and form a triangle on the color wheel.



60.1076, 32.9464, 5.7066



60.1076, -20.6568, 23.6461



60.1076, -16.5967, -32.1159

Complementary

The Complementary color scheme is a pair of colors which are on the opposite of each other on the color wheel.



60.1061, 32.9494, 5.7054



80.2805, -32.9613, 6.6988

Split Complementary

Split-complementary colors differ from the complementary color scheme. The scheme consists of three colors, the original color and two neighbors of the complement color.



60.1076, -27.8114, -17.1820



60.1061, 32.9494, 5.7054



60.1076, -29.9665, 15.1382

Square

The Square scheme is like the rectangle color scheme, but the four colors are evenly spaced on the color wheel.



60.1076, 32.9464, 5.7066



60.1076, -5.8031, 26.7386



60.1076, -32.4336, 0.7307



60.1076, -0.5730, -36.6843

Rectangle

The Rectangle color scheme consists of four colors that form a rectangle on the color wheel.



60.1061, 32.9494, 5.7054



60.1076, 16.9156, 23.4907



60.1076, -32.4336, 0.7307



60.1076, -20.9937, -27.9712

Sweetspot

The Sweet Spot groups the original color and five complimentary colors.



60.1076, 32.9464, 5.7066



89.7862, 7.0394, 5.0116



59.7606, 37.0952, -34.6273



41.0420, 3.8915, 2.3121

0.0000, NaN, NaN



46.2646, -2.4686, 2.5136

Same Dimension

The Same Dimension uses a secret algorithm to generate beautiful new colors.



60.1076, 32.9464, 5.7066



63.1045, 47.0865, 7.9061



65.2193, 18.0041, 19.6633



37.9826, 1.7863, 2.0900



31.1621, 53.9646, 15.4962



8.5570, 14.9861, 2.9555

Inverse Universe

The Inverse Universe completely reimagines the original color for something new.



60.1076, 32.9464, 5.7066



63.1045, 47.0865, 7.9061



73.4057, -17.9371, -13.7801



37.9826, 1.7863, 2.0900



31.1621, 53.9646, 15.4962



8.5570, 14.9861, 2.9555

Previews

White Background



This preview shows how the HunterLab color 60.1061, 32.9494, 5.7054 looks on a white background.

Color Contrast Check

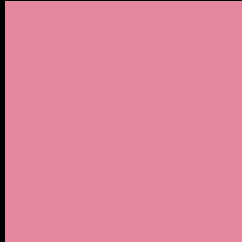
Large Text (above 18pt) WCAG AA × Fail

Any Text WCAG AA × Fail

Large Text (above 18pt) WCAG AAA × Fail

Any Text WCAG AAA × Fail

Black Background



This preview shows how the HunterLab color 60.1061, 32.9494, 5.7054 looks on a black background.

Color Contrast Check

Large Text (above 18pt) WCAG AA ✓ Pass

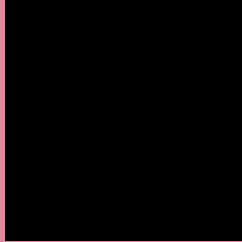
Any Text WCAG AA ✓ Pass

Large Text (above 18pt) WCAG AAA ✓ Pass

Any Text WCAG AAA ✓ Pass

If you want to check with other color combinations, try the [Color Contrast Checker](#).

HunterLab 60.1061, 32.9494, 5.7054 Background



This preview shows how black text looks on a background with the HunterLab color 60.1061, 32.9494, 5.7054.



This preview shows how white text looks on a background with the HunterLab color 60.1061, 32.9494,

Color Blindness Simulation

Color vision deficiency is a very complex topic, and I could not describe the different causes any better than Wikipedia does, so if you want to learn more, you should check out their [article about color blindness](#).

Dichromacy



Original Color

60.1061, 32.9494, 5.7054

Protanopia

60.1567, -0.8626, -1.9124

Deuteranopia

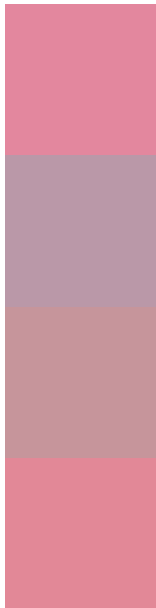
60.2252, 4.1084, 7.0853



Tritanopia

60.1387, 30.0335, 10.3688

Trichromacy



Original Color

60.1061, 32.9494, 5.7054

Protanomaly

59.7685, 10.5231, 0.2641

Deuteranomaly

59.8892, 14.2724, 6.4533

Tritanomaly

60.0095, 31.0802, 8.5946

Monochromacy



Original Color

60.1061, 32.9494, 5.7054

Achromatopsia

61.3402, -3.2730, 3.3327

Achromatomaly

60.3417, 9.2264, 3.7571

CSS Examples

Text

The CSS property to change the color of the text to HunterLab 60.1061, 32.9494, 5.7054 is called "color". The color property can be set on classes, ids or directly on the HTML element.

This example shows how text in the color `rgb(227, 135, 158)` looks like.

```
.text, #text, p{  
    color:rgb(227, 135, 158)  
}
```

If you want to add a text shadow in that color use the text-shadow property, you can generate a text shadow directly with our [CSS Text Shadow Generator](#).

Here you see how black text with a 4 pixel rgb(227, 135, 158) colored shadow looks like.

```
.shadow{ text-shadow: 4px 4px 2px rgb(227, 135, 158) }
```

Border

The CSS property to change the border of an element to HunterLab 60.1061, 32.9494, 5.7054 is called "border". The border property can be set on classes, ids or directly on the HTML element.

This example shows the color as border, it can be applied via the CSS property "border" or "border-color".

```
.border, #border, table{ border:4px solid rgb(227, 135, 158) }
```


If only the border color should be changed use the property `border-color`.

```
.border{ border-color:rgb(227, 135, 158) }
```

If you want to add a box shadow in that color use:

Here you see how a box with a 4 pixel `rgb(227, 135, 158)` colored shadow looks like.

```
.boxshadow{ -moz-box-shadow:4px 4px 4px  
4px rgb(227, 135, 158); -webkit-box-  
shadow:4px 4px 4px 4px rgb(227, 135, 158);  
box-shadow:4px 4px 4px 4px rgb(227, 135,  
158) }
```

Background

The CSS property to change the background color of an element to HunterLab 60.1061, 32.9494, 5.7054 is called "background". The background property can be set on classes, ids or directly on the HTML element.

```
.background, #background, body{  
background: rgb(227, 135, 158) }
```

If only the background color should be changed can be used:

```
.background{ background-color: rgb(227,  
135, 158) }
```

This example shows the color as background, it is applied via the CSS property "background".

To optimize and compress your CSS code, you can use our [online CSS compressor and optimizer](#) based on csstidy. If you want to create a linear or radial gradient as background or border, check our [CSS Gradient Generator](#).

Hey! You found this booklet interesting? Support Converting Colors with the new Membership Option!

The pro membership hides all ads, plus gives you double the colors in the color bucket, and more awesome pro features!

[Learn more, Memberships starting at \\$2.50/m!](#)

**Follow me
on Twitter!**

@ConvertingColor