

Converting Colors

HunterLab(60.1173, 7.3143,
1.5922)

Have a look what the booklet for
HunterLab(60.1173, 7.3143, 1.5922)
contains.

HunterLab(60.1173, 7.3143, 1.5922)	3
<i>Conversions</i>	4
<i>Details</i>	6
<i>Harmonies</i>	12
<i>Previews</i>	24
<i>Color Blindness Simulation</i>	28
<i>CSS Examples</i>	31

Color

**HunterLab(60.1173, 7.3143,
1.5922)**

Conversions

Conversions Part 1

Format	Color
Hex	B69BA6
RGB	182, 155, 166
RGB Percent	71%, 61%, 65%
CMY	0.2863, 0.3921, 0.3490
CMYK	0.00, 0.15, 0.09, 0.29
HSL	336°, 16%, 66%
HSV	336°, 15%, 71%
XYZ	37.8956, 36.1409, 41.0549
YIQ	164.3270, 12.5610, 9.1450

Conversions

Conversions Part 2

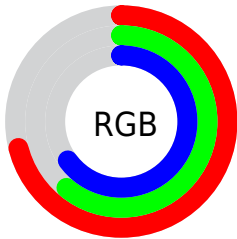
Format	Color
R _Y B	182, 155, 166
Decimal	11967398
CIE Lab	66.63, 11.85, -2.03
CIE LCh	67, 12.022, 350.300
Yxy	36.1425, 0.3293, 0.3140
Android (android.graphics.Color)	4290157478 (0xFFB69BA6)
YUV	164.3270, 0.8248, 15.4992
Hunter-Lab	60.1173, 7.3143, 1.5922

Details

The HunterLab color $60.1173, 7.3143, 1.5922$ is a light color, and the websafe version is hex $CC9999$. A complement of this color would be $65.8526, -13.3301, 5.6543$, and the grayscale version is $61.0578, -3.2579, 3.3174$.

A 20% lighter version of the original color is $83.0654, 7.4479, 2.4879$, and $39.7274, 7.0436, 0.8444$ is the 20% darker color. If you saturate the color by 10%, you get $54.9132, 14.8893, 0.5140$, and if you desaturate by 10%, it is $65.6328, -0.1168, 2.9656$.

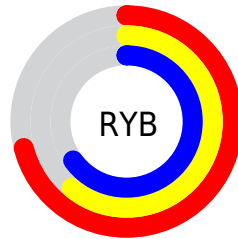
Distribution



Red (71%)

Green (61%)

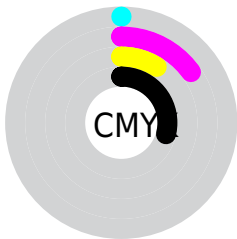
Blue (65%)



Red (71%)

Yellow (61%)

Blue (65%)

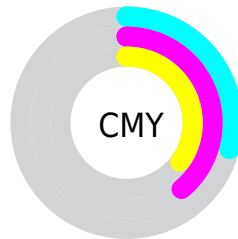


Cyan (0%)

Magenta (15%)

Yellow (9%)

Black (29%)



Cyan (29%)

Magenta (39%)

Yellow (35%)

Brightness & Saturation Gradients

These gradients show how the HunterLab color 60.1173, 7.3143, 1.5922 changes by changing the brightness by 10 percent. The first figure shows a shift by +10% for each color and the second figure -10%.

Similar to the brightness gradients but the following saturation gradients show a change of the HunterLab color 60.1173, 7.3143, 1.5922 by changing the saturation by 10% instead.

60.1173, 7.3143,
1.5922

60.1173, 7.3143,
1.5922

181.5442, 5.2549,
7.4727

49.5422, 7.2649,
1.1194

83.2178, 7.2084,
2.6636

39.6710, 7.1396,
0.6909

95.6723, 7.0690,
3.2547

30.5595, 6.9249,
0.3125

108.6929, 6.8776,
3.8803

22.2775, 6.6046,
-0.0095

122.2557, 6.6381,
4.5387

14.9180, 6.1552,
-0.2662

136.3400, 6.3535,
5.2283

8.5664, 5.7470,
-0.5139

150.9271, 6.0267,

0.0000, NaN, NaN

5.9480

0.0000, NaN, NaN

166.0002, 5.6598,
6.6965

0.0000, NaN, NaN

■ 60.1173, 7.3143,
1.5922

■ 60.1173, 7.3143,
1.5922

■ 54.9132, 14.8893,
0.5140

■ 65.6328, -0.1168,
2.9656

■ 50.0715, 22.5598,
-0.1980

■ 71.4114, -7.3839,
4.5725

■ 45.6601, 30.2036,
-0.4525

■ 77.4191, -14.4946,
6.3690

■ 41.7576, 37.5968,
-0.1499

■ 83.6273, -21.4639,
8.3205

■ 38.4497, 44.3804,
0.8009

■ 90.0130, -28.3107,
10.4007

■ 35.8176, 50.0666,
2.4469

■ 93.3911, -30.7203,
9.1447

■ 33.9171, 54.1337,
4.7445

■ 93.7264, -28.7944,
4.3550

■ 32.7478, 56.2351,
7.5250

■ 94.0809, -26.7666,
-0.6890

■ 32.3132, 56.8730,
8.9758

■ 94.1728, -26.2419,
-1.9944

Harmonies

Analogous

The Analogous color harmony consists of three colors that are next to each other on the color wheel.



60.1186, 4.9441, -3.3481



60.1173, 7.3143, 1.5922



60.1186, 6.7861, 6.5824

Triad

The Triadic color harmony groups three colors that are evenly spaced from another and form a triangle on the color wheel.



60.1186, 7.3125, 1.5933



60.1186, -6.7526, 11.7775



60.1186, -9.6674, -4.7887

Complementary

The Complementary color scheme is a pair of colors which are on the opposite of each other on the color wheel.



60.1173, 7.3143, 1.5922



65.8526, -13.3301, 5.6543

Split Complementary

Split-complementary colors differ from the complementary color scheme. The scheme consists of three colors, the original color and two neighbors of the complement color.



60.1186, -12.5947, -0.2371



60.1173, 7.3143, 1.5922



60.1186, -10.9533, 9.2164

Square

The Square scheme is like the rectangle color scheme, but the four colors are evenly spaced on the color wheel.



60.1186, 7.3125, 1.5933



60.1186, -1.4608, 12.1741



60.1186, -13.0570, 4.9045



60.1186, -4.9414, -7.2405

Rectangle

The Rectangle color scheme consists of four colors that form a rectangle on the color wheel.



60.1173, 7.3143, 1.5922



60.1186, 4.8709, 9.2868



60.1186, -13.0570, 4.9045



60.1186, -10.8873, -3.4357

Sweetspot

The Sweet Spot groups the original color and five complimentary colors.



60.1186, 7.3125, 1.5933



88.9561, -0.9141, 4.1484



59.5413, 6.4448, -7.2678



41.5365, -0.0795, 1.8778



96.5975, -5.1542, 5.2483



43.2801, -2.3093, 2.3515

Same Dimension

The Same Dimension uses a secret algorithm to generate beautiful new colors.



60.1186, 7.3125, 1.5933



78.4642, 13.3672, 1.5915



60.4250, 4.4678, 6.8822



30.1185, 1.5338, 1.1045



27.1773, 47.8773, 7.2097



5.2225, 9.4254, -0.3598

Inverse Universe

The Inverse Universe completely reimagines the original color for something new.



60.1186, 7.3125, 1.5933



78.4642, 13.3672, 1.5915



65.4893, -10.3971, 0.1052



30.1185, 1.5338, 1.1045



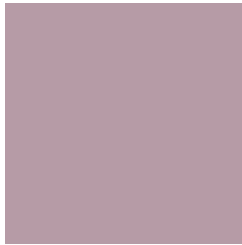
27.1773, 47.8773, 7.2097



5.2225, 9.4254, -0.3598

Previews

White Background



This preview shows how the HunterLab color 60.1173, 7.3143, 1.5922 looks on a white background.

Color Contrast Check

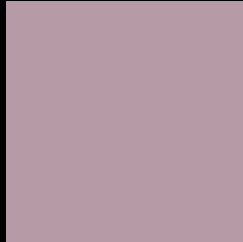
Large Text (above 18pt) WCAG AA × Fail

Any Text WCAG AA × Fail

Large Text (above 18pt) WCAG AAA × Fail

Any Text WCAG AAA × Fail

Black Background



This preview shows how the HunterLab color 60.1173, 7.3143, 1.5922 looks on a black background.

Color Contrast Check

Large Text (above 18pt) WCAG AA ✓ Pass

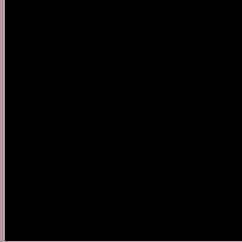
Any Text WCAG AA ✓ Pass

Large Text (above 18pt) WCAG AAA ✓ Pass

Any Text WCAG AAA ✓ Pass

If you want to check with other color combinations, try the [Color Contrast Checker](#).

HunterLab 60.1173, 7.3143, 1.5922 Background



This preview shows how black text looks on a background with the HunterLab color 60.1173, 7.3143, 1.5922.



This preview shows how white text looks on a background with the HunterLab color 60.1173, 7.3143,

1.5922.

Color Blindness Simulation

Color vision deficiency is a very complex topic, and I could not describe the different causes any better than Wikipedia does, so if you want to learn more, you should check out their [article about color blindness](#).

Dichromacy



Original Color

60.1173, 7.3143, 1.5922

Protanopia

60.1486, -1.0812, -0.4430

Deuteranopia

60.0810, 4.3227, 1.4958



Tritanopia

60.1480, 7.4767, 1.1561

Trichromacy



Original Color

60.1173, 7.3143, 1.5922

Protanomaly

60.1722, 1.8991, 0.1252

Deuteranomaly

59.9959, 5.4809, 1.4132

Tritanomaly

60.1480, 7.4767, 1.1561

Monochromacy



Original Color

60.1173, 7.3143, 1.5922

Achromatopsia

60.9293, -3.2510, 3.3104

Achromatomaly

60.7160, 0.5572, 2.6614

CSS Examples

Text

The CSS property to change the color of the text to HunterLab 60.1173, 7.3143, 1.5922 is called "color". The color property can be set on classes, ids or directly on the HTML element.

This example shows how text in the color `rgb(182, 155, 166)` looks like.

```
.text, #text, p{  
    color:rgb(182, 155, 166)  
}
```

If you want to add a text shadow in that color use the text-shadow property, you can generate a text shadow directly with our [CSS Text Shadow Generator](#).

Here you see how black text with a 4 pixel rgb(182, 155, 166) colored shadow looks like.

```
.shadow{ text-shadow: 4px 4px 2px rgb(182, 155, 166) }
```

Border

The CSS property to change the border of an element to HunterLab 60.1173, 7.3143, 1.5922 is called "border".

The border property can be set on classes, ids or directly on the HTML element.

This example shows the color as border, it can be applied via the CSS property "border" or "border-color".

```
.border, #border, table{ border:4px solid rgb(182, 155, 166) }
```


If only the border color should be changed use the property `border-color`.

```
.border{ border-color:rgb(182, 155, 166) }
```

If you want to add a box shadow in that color use:

Here you see how a box with a 4 pixel `rgb(182, 155, 166)` colored shadow looks like.

```
.boxshadow{ -moz-box-shadow:4px 4px 4px  
4px rgb(182, 155, 166); -webkit-box-  
shadow:4px 4px 4px 4px rgb(182, 155, 166);  
box-shadow:4px 4px 4px 4px rgb(182, 155,  
166) }
```

Background

The CSS property to change the background color of an element to HunterLab 60.1173, 7.3143, 1.5922 is called "background". The background property can be set on classes, ids or directly on the HTML element.

```
.background, #background, body{  
background: rgb(182, 155, 166) }
```

If only the background color should be changed can be used:

```
.background{ background-color: rgb(182,  
155, 166) }
```

This example shows the color as background, it is applied via the CSS property "background".

To optimize and compress your CSS code, you can use our [online CSS compressor and optimizer](#) based on csstidy. If you want to create a linear or radial gradient as background or border, check our [CSS Gradient Generator](#).

Hey! You found this booklet interesting? Support Converting Colors with the new Membership Option!

The pro membership hides all ads, plus gives you double the colors in the color bucket, and more awesome pro features!

[Learn more, Memberships starting at \\$2.50/m!](#)

**Follow me
on Twitter!**

@ConvertingColor