

Converting Colors

HunterLab(60.1452, 9.9283,
3.9963)

Have a look what the booklet for
HunterLab(60.1452, 9.9283, 3.9963)
contains.

HunterLab(60.1452, 9.9283, 3.9963)	3
<i>Conversions</i>	4
<i>Details</i>	6
<i>Harmonies</i>	12
<i>Previews</i>	24
<i>Color Blindness Simulation</i>	28
<i>CSS Examples</i>	31

Color

**HunterLab(60.1452, 9.9283,
3.9963)**

Conversions

Conversions Part 1

Format	Color
Hex	BD99A1
RGB	189, 153, 161
RGB Percent	74%, 60%, 63%
CMY	0.2588, 0.4000, 0.3686
CMYK	0.00, 0.19, 0.15, 0.26
HSL	347°, 21%, 67%
HSV	347°, 19%, 74%
XYZ	38.8105, 36.1745, 38.6550
YIQ	164.6760, 18.8880, 10.1200

Conversions

Conversions Part 2

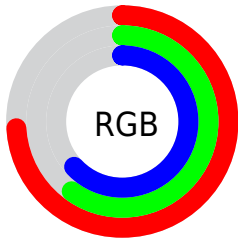
Format	Color
RYB	189, 153, 161
Decimal	12425633
CIELab	66.65, 14.68, 0.89
CIELCh	67, 14.705, 3.472
Yxy	36.1761, 0.3415, 0.3183
Android (android.graphics.Color)	4290615713 (0xFFBD99A1)
YUV	164.6760, -1.8123, 21.3321
Hunter-Lab	60.1452, 9.9283, 3.9963

Details

The HunterLab color $60.1452, 9.9283, 3.9963$ is a light color, and the websafe version is hex $CC9999$. A complement of this color would be $68.1942, -15.4861, 3.7399$, and the grayscale version is $61.2099, -3.2660, 3.3256$.

A 20% lighter version of the original color is $83.1723, 10.5023, 5.1229$, and $39.7233, 9.3803, 2.6233$ is the 20% darker color. If you saturate the color by 10%, you get $54.7564, 17.4171, 4.4675$, and if you desaturate by 10%, it is $65.8866, 2.6240, 3.8218$.

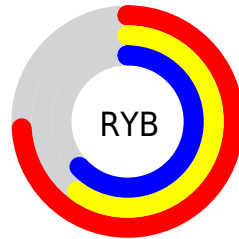
Distribution



Red (74%)

Green (60%)

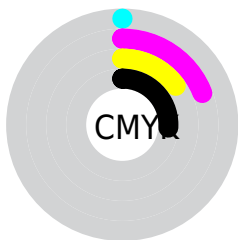
Blue (63%)



Red (74%)

Yellow (60%)

Blue (63%)

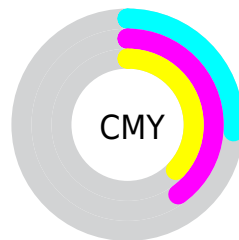


Cyan (0%)

Magenta (19%)

Yellow (15%)

Black (26%)



Cyan (26%)

Magenta (40%)

Yellow (37%)

Brightness & Saturation Gradients

These gradients show how the HunterLab color 60.1452, 9.9283, 3.9963 changes by changing the brightness by 10 percent. The first figure shows a shift by +10% for each color and the second figure -10%.

Similar to the brightness gradients but the following saturation gradients show a change of the HunterLab color 60.1452, 9.9283, 3.9963 by changing the saturation by 10% instead.

60.1452, 9.9283,
3.9963

60.1452, 9.9283,
3.9963

181.5846, 8.8914,
10.9331

49.5684, 9.7399,
3.3758

83.2489, 10.0804,
5.3387

39.6953, 9.4681,
2.7893

95.7049, 10.0620,
6.0554

30.5818, 9.0980,
2.2400

108.7269, 9.9870,
6.8013

22.2975, 8.6118,
1.7304

122.2911, 9.8597,
7.5753

14.9356, 7.9850,
1.2633

136.3767, 9.6837,
8.3762

8.5829, 7.3910,
0.8973

150.9650, 9.4619,

0.0000, INF, NaN

9.2034

0.0000, NaN, NaN

166.0394, 9.1971,
10.0559

0.0000, NaN, NaN

■ 60.1452, 9.9283,
3.9963

■ 60.1452, 9.9283,
3.9963

■ 54.7564, 17.4171,
4.4675

■ 65.8866, 2.6240,
3.8218

■ 49.7815, 25.0344,
5.2855

■ 71.9241, -4.4754,
3.8919

■ 45.3014, 32.6337,
6.5012

■ 78.2172, -11.3816,
4.1660

■ 41.4084, 39.9441,
8.1436

■ 84.7326, -18.1153,
4.6096

■ 38.1999, 46.5380,
10.1937

■ 91.4436, -24.7001,
5.1952

■ 35.7606, 51.8628,
12.5526

■ 94.4413, -25.6380,
1.3729

■ 34.1333, 55.3951,
15.0283

■ 94.6356, -24.5325,
-1.3881

■ 33.2195, 57.1201,
17.3234

■ 33.1451, 57.2660,
17.5104

Harmonies

Analogous

The Analogous color harmony consists of three colors that are next to each other on the color wheel.



60.1466, 8.5152, -2.3456



60.1452, 9.9283, 3.9963



60.1466, 7.6943, 9.5330

Triad

The Triadic color harmony groups three colors that are evenly spaced from another and form a triangle on the color wheel.



60.1466, 9.9263, 3.9974



60.1466, -10.0238, 12.4619



60.1466, -8.7524, -8.5036

Complementary

The Complementary color scheme is a pair of colors which are on the opposite of each other on the color wheel.



60.1452, 9.9283, 3.9963



68.1942, -15.4861, 3.7399

Split Complementary

Split-complementary colors differ from the complementary color scheme. The scheme consists of three colors, the original color and two neighbors of the complement color.



60.1466, -13.3936, -3.7397



60.1452, 9.9283, 3.9963



60.1466, -14.1052, 8.3987

Square

The Square scheme is like the rectangle color scheme, but the four colors are evenly spaced on the color wheel.



60.1466, 9.9263, 3.9974



60.1466, -3.9758, 14.0782



60.1466, -15.3121, 2.5414



60.1466, -2.4453, -10.0017

Rectangle

The Rectangle color scheme consists of four colors that form a rectangle on the color wheel.



60.1452, 9.9283, 3.9963



60.1466, 4.4945, 12.1538



60.1466, -15.3121, 2.5414



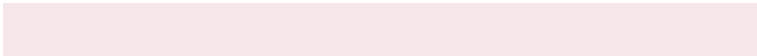
60.1466, -10.5499, -7.2076

Sweetspot

The Sweet Spot groups the original color and five complimentary colors.



60.1466, 9.9263, 3.9974



90.5191, 0.6813, 5.1109



60.1945, 11.9114, -10.1209



41.7354, 0.6044, 2.3693



97.7295, -5.2146, 5.3098



44.2712, -2.3622, 2.4053

Same Dimension

The Same Dimension uses a secret algorithm to generate beautiful new colors.



60.1466, 9.9263, 3.9974



77.3127, 17.5894, 5.5690



62.5881, 3.8753, 10.0836



30.9357, 1.3394, 1.8001



27.2054, 47.0387, 14.1013



5.4775, 9.6524, 1.4313

Inverse Universe

The Inverse Universe completely reimagines the original color for something new.



60.1466, 9.9263, 3.9974



77.3127, 17.5894, 5.5690



65.4586, -9.5015, -3.4385



30.9357, 1.3394, 1.8001



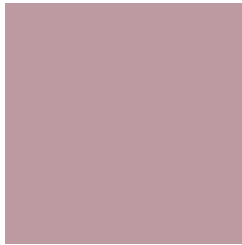
27.2054, 47.0387, 14.1013



5.4775, 9.6524, 1.4313

Previews

White Background



This preview shows how the HunterLab color 60.1452, 9.9283, 3.9963 looks on a white background.

Color Contrast Check

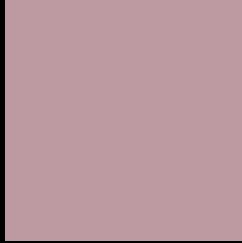
Large Text (above 18pt) WCAG AA × Fail

Any Text WCAG AA × Fail

Large Text (above 18pt) WCAG AAA × Fail

Any Text WCAG AAA × Fail

Black Background



This preview shows how the HunterLab color 60.1452, 9.9283, 3.9963 looks on a black background.

Color Contrast Check

Large Text (above 18pt) WCAG AA ✓ Pass

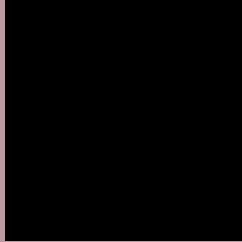
Any Text WCAG AA ✓ Pass

Large Text (above 18pt) WCAG AAA ✓ Pass

Any Text WCAG AAA ✓ Pass

If you want to check with other color combinations, try the [Color Contrast Checker](#).

HunterLab 60.1452, 9.9283, 3.9963 Background



This preview shows how black text looks on a background with the HunterLab color 60.1452, 9.9283, 3.9963.



This preview shows how white text looks on a background with the HunterLab color 60.1452, 9.9283,

Color Blindness Simulation

Color vision deficiency is a very complex topic, and I could not describe the different causes any better than Wikipedia does, so if you want to learn more, you should check out their [article about color blindness](#).

Dichromacy



Original Color

60.1452, 9.9283, 3.9963

Protanopia

60.1127, -1.4528, 1.4331

Deuteranopia

60.1961, 4.3511, 4.4116



Tritanopia

59.9630, 10.9093, 2.4122

Trichromacy



Original Color

60.1452, 9.9283, 3.9963

Protanomaly

60.0152, 2.5258, 2.3278

Deuteranomaly

60.3177, 6.1944, 4.5849

Tritanomaly

59.9330, 10.7519, 2.8401

Monochromacy



Original Color

60.1452, 9.9283, 3.9963

Achromatopsia

61.3402, -3.2730, 3.3327

Achromatomaly

60.9662, 1.3507, 3.4344

CSS Examples

Text

The CSS property to change the color of the text to HunterLab 60.1452, 9.9283, 3.9963 is called "color". The color property can be set on classes, ids or directly on the HTML element.

This example shows how text in the color `rgb(189, 153, 161)` looks like.

```
.text, #text, p{  
    color:rgb(189, 153, 161)  
}
```

If you want to add a text shadow in that color use the text-shadow property, you can generate a text shadow directly with our [CSS Text Shadow Generator](#).

Here you see how black text with a 4 pixel rgb(189, 153, 161) colored shadow looks like.

```
.shadow{ text-shadow: 4px 4px 2px rgb(189, 153, 161) }
```

Border

The CSS property to change the border of an element to HunterLab 60.1452, 9.9283, 3.9963 is called "border".

The border property can be set on classes, ids or directly on the HTML element.

This example shows the color as border, it can be applied via the CSS property "border" or "border-color".

```
.border, #border, table{ border:4px solid rgb(189, 153, 161) }
```


If only the border color should be changed use the property `border-color`.

```
.border{ border-color:rgb(189, 153, 161) }
```

If you want to add a box shadow in that color use:

Here you see how a box with a 4 pixel `rgb(189, 153, 161)` colored shadow looks like.

```
.boxshadow{ -moz-box-shadow:4px 4px 4px  
4px rgb(189, 153, 161); -webkit-box-  
shadow:4px 4px 4px 4px rgb(189, 153, 161);  
box-shadow:4px 4px 4px 4px rgb(189, 153,  
161) }
```

Background

The CSS property to change the background color of an element to HunterLab 60.1452, 9.9283, 3.9963 is called "background". The background property can be set on classes, ids or directly on the HTML element.

```
.background, #background, body{  
background: rgb(189, 153, 161) }
```

If only the background color should be changed can be used:

```
.background{ background-color: rgb(189,  
153, 161) }
```

This example shows the color as background, it is applied via the CSS property "background".

To optimize and compress your CSS code, you can use our [online CSS compressor and optimizer](#) based on csstidy. If you want to create a linear or radial gradient as background or border, check our [CSS Gradient Generator](#).

Hey! You found this booklet interesting? Support Converting Colors with the new Membership Option!

The pro membership hides all ads, plus gives you double the colors in the color bucket, and more awesome pro features!

[Learn more, Memberships starting at \\$2.50/m!](#)

**Follow me
on Twitter!**

@ConvertingColor