

Converting Colors

HunterLab(60.1477, 46.6571,
6.3549)

Have a look what the booklet for
HunterLab(60.1477, 46.6571,
6.3549) contains.

HunterLab(60.1607, 46.5572, 6.4491)	3
<i>Conversions</i>	4
<i>Details</i>	6
<i>Harmonies</i>	12
<i>Previews</i>	24
<i>Color Blindness Simulation</i>	28
<i>CSS Examples</i>	31

Color

**HunterLab(60.1607, 46.5572,
6.4491)**

Conversions

Conversions Part 1

Format	Color
Hex	F67B9D
RGB	246, 123, 157
RGB Percent	96%, 48%, 62%
CMY	0.0353, 0.5176, 0.3843
CMYK	0.00, 0.50, 0.36, 0.04
HSL	343°, 87%, 72%
HSV	343°, 50%, 96%
XYZ	51.1748, 36.1931, 36.1871
YIQ	163.6530, 62.3940, 36.6500

Conversions

Conversions Part 2

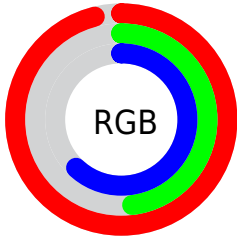
Format	Color
R_{YB}	246, 123, 157
Decimal	16153501
CIE Lab	66.67, 50.44, 4.00
CIE LCh	67, 50.595, 4.530
Yxy	36.1949, 0.4142, 0.2929
Android (android.graphics.Color)	4294343581 (0xFFFF67B9D)
YUV	163.6530, -3.2799, 72.2183
Hunter-Lab	60.1607, 46.5572, 6.4491

Details

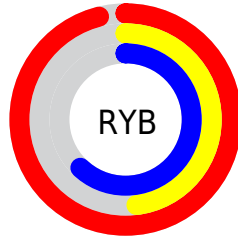
The HunterLab color **60.1607, 46.5572, 6.4491** is a light color, and the websafe version is hex **FF6699**. A complement of this color would be **86.5314, -42.0797, 9.9023**, and the grayscale version is **60.7833, -3.2432, 3.3025**.

A 20% lighter version of the original color is **76.0289, 28.7551, -0.7076**, and **39.6686, 42.9816, 4.8157** is the 20% darker color. If you saturate the color by 10%, you get **55.0223, 56.4669, 8.4897**, and if you desaturate by 10%, it is **66.1340, 36.0958, 5.1145**.

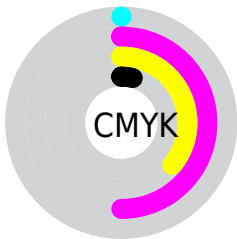
Distribution



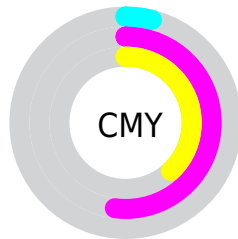
- Red (96%)
- Green (48%)
- Blue (62%)



- Red (96%)
- Yellow (48%)
- Blue (62%)



- Cyan (0%)
- Magenta (50%)
- Yellow (36%)
- Black (4%)



- Cyan (4%)
- Magenta (52%)
- Yellow (38%)

Brightness & Saturation Gradients

These gradients show how the HunterLab color 60.1607, 46.5572, 6.4491 changes by changing the brightness by 10 percent. The first figure shows a shift by +10% for each color and the second figure -10%.

Similar to the brightness gradients but the following saturation gradients show a change of the HunterLab color 60.1607, 46.5572, 6.4491 by changing the saturation by 10% instead.

60.1607, 46.5572,
6.4491

60.1607, 46.5572,
6.4491

181.6072, 57.2809,
14.5429

49.5831, 44.8830,
5.6647

83.2663, 49.5686,
8.0909

39.7089, 43.1010,
4.9015

95.7232, 50.9237,
8.9458

30.5943, 41.2167,
4.1594

108.7460, 52.1854,
9.8235

22.3088, 39.2669,
3.4358

122.3109, 53.3595,
10.7237

14.9454, 37.3725,
2.7246

136.3973, 54.4513,
11.6461

8.5922, 36.3247,
2.3953

150.9863, 55.4659,

0.0000, INF, NaN

12.5903

0.0000, NaN, NaN

166.0614, 56.4078,
13.5561

0.0000, NaN, NaN

■ 60.1607, 46.5572,
6.4491

■ 60.1607, 46.5572,
6.4491

■ 55.0223, 56.4669,
8.4897

■ 66.1340, 36.0958,
5.1145

■ 50.8478, 65.1884,
11.2309

■ 72.8076, 25.5204,
4.4144

■ 47.7474, 71.9281,
14.5507

■ 80.0695, 15.0650,
4.2575

■ 45.7603, 76.0159,
18.1763

■ 87.8259, 4.8386,
4.5516

■ 44.7329, 77.5384,
21.6738

■ 96.0016, -5.1252,
5.2161

■ 44.7326, 77.5387,
21.6748

■ 99.1629, -8.2600,
4.3927

Harmonies

Analogous

The Analogous color harmony consists of three colors that are next to each other on the color wheel.



60.1622, 41.2859, -17.3651



60.1607, 46.5572, 6.4491



60.1622, 36.9589, 22.3181

Triad

The Triadic color harmony groups three colors that are evenly spaced from another and form a triangle on the color wheel.



60.1622, 46.5536, 6.4504



60.1622, -25.9279, 28.3553



60.1622, -20.7925, -47.3097

Complementary

The Complementary color scheme is a pair of colors which are on the opposite of each other on the color wheel.



60.1607, 46.5572, 6.4491



86.5314, -42.0797, 9.9023

Split Complementary

Split-complementary colors differ from the complementary color scheme. The scheme consists of three colors, the original color and two neighbors of the complement color.



60.1622, -35.0057, -25.2027



60.1607, 46.5572, 6.4491



60.1622, -37.6492, 18.4843

Square

The Square scheme is like the rectangle color scheme, but the four colors are evenly spaced on the color wheel.



60.1622, 46.5536, 6.4504



60.1622, -6.6086, 31.6364



60.1622, -40.7104, -0.0840



60.1622, 0.2590, -54.2666

Rectangle

The Rectangle color scheme consists of four colors that form a rectangle on the color wheel.



60.1607, 46.5572, 6.4491



60.1622, 24.1523, 28.1594



60.1622, -40.7104, -0.0840



60.1622, -26.4214, -41.0854

Sweetspot

The Sweet Spot groups the original color and five complimentary colors.



60.1622, 46.5536, 6.4504



87.3618, 10.3669, 4.5340



58.9007, 50.3471, -50.5893



39.6328, 5.8401, 2.0719

0.0000, NaN, NaN



46.2646, -2.4686, 2.5136

Same Dimension

The Same Dimension uses a secret algorithm to generate beautiful new colors.



60.1622, 46.5536, 6.4504



57.2583, 58.9357, 8.8729



65.3652, 28.7960, 23.7824



40.6913, 1.9924, 2.1109



32.7122, 56.7635, 15.3796



9.7836, 17.1435, 3.3078

Inverse Universe

The Inverse Universe completely reimagines the original color for something new.



60.1622, 46.5536, 6.4504



57.2583, 58.9357, 8.8729



78.5570, -23.3464, -17.8070



40.6913, 1.9924, 2.1109



32.7122, 56.7635, 15.3796



9.7836, 17.1435, 3.3078

Previews

White Background



This preview shows how the HunterLab color 60.1607, 46.5572, 6.4491 looks on a white background.

Color Contrast Check

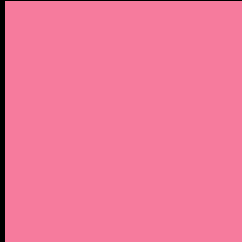
Large Text (above 18pt) WCAG AA × Fail

Any Text WCAG AA × Fail

Large Text (above 18pt) WCAG AAA × Fail

Any Text WCAG AAA × Fail

Black Background



This preview shows how the HunterLab color 60.1607, 46.5572, 6.4491 looks on a black background.

Color Contrast Check

Large Text (above 18pt) WCAG AA ✓ Pass

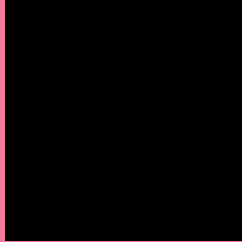
Any Text WCAG AA ✓ Pass

Large Text (above 18pt) WCAG AAA ✓ Pass

Any Text WCAG AAA ✓ Pass

If you want to check with other color combinations, try the [Color Contrast Checker](#).

HunterLab 60.1607, 46.5572, 6.4491 Background



This preview shows how black text looks on a background with the HunterLab color 60.1607, 46.5572, 6.4491.



This preview shows how white text looks on a background with the HunterLab color 60.1607, 46.5572,

6.4491.

Color Blindness Simulation

Color vision deficiency is a very complex topic, and I could not describe the different causes any better than Wikipedia does, so if you want to learn more, you should check out their [article about color blindness](#).

Dichromacy



Original Color

60.1607, 46.5572, 6.4491

Protanopia

60.2673, -0.0883, -4.8214

Deuteranopia

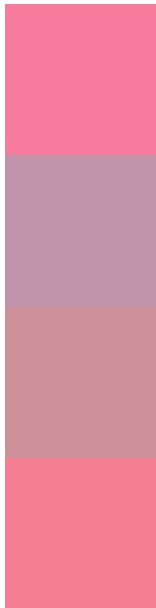
60.2440, 4.0075, 8.3777



Tritanopia

60.1576, 41.1305, 14.8323

Trichromacy



Original Color

60.1607, 46.5572, 6.4491

Protanomaly

59.1728, 15.6712, -1.8681

Deuteranomaly

59.6069, 18.6230, 7.0788

Tritanomaly

60.2891, 42.9779, 11.9540

Monochromacy



Original Color

60.1607, 46.5572, 6.4491

Achromatopsia

60.9293, -3.2510, 3.3104

Achromatomaly

59.6133, 13.7378, 3.4386

CSS Examples

Text

The CSS property to change the color of the text to HunterLab 60.1607, 46.5572, 6.4491 is called "color". The color property can be set on classes, ids or directly on the HTML element.

This example shows how text in the color `rgb(246, 123, 157)` looks like.

```
.text, #text, p{  
    color:rgb(246, 123, 157)  
}
```

If you want to add a text shadow in that color use the text-shadow property, you can generate a text shadow directly with our [CSS Text Shadow Generator](#).

Here you see how black text with a 4 pixel rgb(246, 123, 157) colored shadow looks like.

```
.shadow{ text-shadow: 4px 4px 2px rgb(246, 123, 157) }
```

Border

The CSS property to change the border of an element to HunterLab 60.1607, 46.5572, 6.4491 is called "border". The border property can be set on classes, ids or directly on the HTML element.

This example shows the color as border, it can be applied via the CSS property "border" or "border-color".

```
.border, #border, table{ border:4px solid rgb(246, 123, 157) }
```


If only the border color should be changed use the property `border-color`.

```
.border{ border-color:rgb(246, 123, 157) }
```

If you want to add a box shadow in that color use:

Here you see how a box with a 4 pixel `rgb(246, 123, 157)` colored shadow looks like.

```
.boxshadow{ -moz-box-shadow:4px 4px 4px 4px rgb(246, 123, 157); -webkit-box-shadow:4px 4px 4px 4px rgb(246, 123, 157); box-shadow:4px 4px 4px 4px rgb(246, 123, 157) }
```

Background

The CSS property to change the background color of an element to HunterLab 60.1607, 46.5572, 6.4491 is called "background". The background property can be set on classes, ids or directly on the HTML element.

```
.background, #background, body{  
background: rgb(246, 123, 157) }
```

If only the background color should be changed can be used:

```
.background{ background-color: rgb(246,  
123, 157) }
```

This example shows the color as background, it is applied via the CSS property "background".

To optimize and compress your CSS code, you can use our [online CSS compressor and optimizer](#) based on csstidy. If you want to create a linear or radial gradient as background or border, check our [CSS Gradient Generator](#).

Hey! You found this booklet interesting? Support Converting Colors with the new Membership Option!

The pro membership hides all ads, plus gives you double the colors in the color bucket, and more awesome pro features!

[Learn more, Memberships starting at \\$2.50/m!](#)

**Follow me
on Twitter!**

@ConvertingColor