

Converting Colors

HunterLab(60.1817, 48.3030,
12.8384)

Have a look what the booklet for
HunterLab(60.1817, 48.3030,
12.8384) contains.

HunterLab(60.2687, 48.1394, 12.8045)	3
<i>Conversions</i>	4
<i>Details</i>	6
<i>Harmonies</i>	12
<i>Previews</i>	24
<i>Color Blindness Simulation</i>	28
<i>CSS Examples</i>	31

Color

**HunterLab(60.2687, 48.1394,
12.8045)**

Conversions

Conversions Part 1

Format	Color
Hex	FC798E
RGB	252, 121, 142
RGB Percent	99%, 47%, 56%
CMY	0.0118, 0.5255, 0.4431
CMYK	0.00, 0.52, 0.44, 0.01
HSL	350°, 96%, 73%
HSV	350°, 52%, 99%
XYZ	51.8647, 36.3232, 29.8686
YIQ	162.5630, 71.3350, 34.3030

Conversions

Conversions Part 2

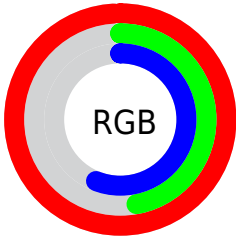
Format	Color
R _Y B	252, 121, 142
Decimal	16546190
CIE Lab	66.77, 51.83, 12.75
CIE LCh	67, 53.375, 13.820
Yxy	36.3251, 0.4393, 0.3077
Android (android.graphics.Color)	4294736270 (0xFFFC798E)
YUV	162.5630, -10.1376, 78.4362
Hunter-Lab	60.2687, 48.1394, 12.8045

Details

The HunterLab color **60.2687, 48.1394, 12.8045** is a light color, and the websafe version is hex **FF6699**. A complement of this color would be **89.1381, -41.6057, 3.9088**, and the grayscale version is **60.3607, -3.2207, 3.2795**.

A 20% lighter version of the original color is **75.2926, 26.9026, 5.7412**, and **39.6806, 44.6651, 10.1040** is the 20% darker color. If you saturate the color by 10%, you get **55.1386, 58.0932, 15.5976**, and if you desaturate by 10%, it is **66.3080, 37.6227, 10.4662**.

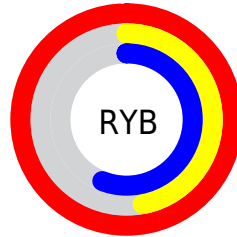
Distribution



Red (99%)

Green (47%)

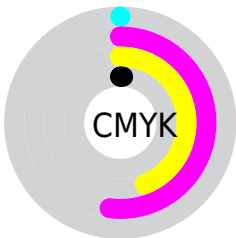
Blue (56%)



Red (99%)

Yellow (47%)

Blue (56%)

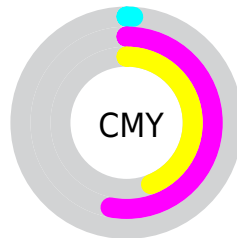


Cyan (0%)

Magenta (52%)

Yellow (44%)

Black (1%)



Cyan (1%)

Magenta (53%)

Yellow (44%)

Brightness & Saturation Gradients

These gradients show how the HunterLab color 60.2687, 48.1394, 12.8045 changes by changing the brightness by 10 percent. The first figure shows a shift by +10% for each color and the second figure -10%.

Similar to the brightness gradients but the following saturation gradients show a change of the HunterLab color 60.2687, 48.1394, 12.8045 by changing the saturation by 10% instead.

60.2687, 48.1394,
12.8045

60.2687, 48.1394,
12.8045

181.7633, 59.2657,
24.3259

49.6844, 46.4193,
11.5231

83.3867, 51.2432,
15.3438

39.8030, 44.5939,
10.2207

95.8494, 52.6445,
16.6098

30.6806, 42.6706,
8.8848

108.8776, 53.9519,
17.8784

22.3864, 40.6913,
7.4938

122.4478, 55.1711,
19.1519

15.0134, 38.7884,
6.0097

136.5392, 56.3073,
20.4322

8.6557, 37.7385,
6.0590

151.1331, 57.3656,

0.0000, INF, NaN

21.7206

0.0000, NaN, NaN

166.2129, 58.3504,
23.0182

0.0000, NaN, NaN

■ 60.2687, 48.1394,
12.8045

■ 60.2687, 48.1394,
12.8045

■ 55.1386, 58.0932,
15.5976

■ 66.3080, 37.6227,
10.4662

■ 51.0549, 66.7884,
18.7225

■ 73.1094, 27.0250,
8.6027

■ 48.1258, 73.3859,
21.9398

■ 80.5489, 16.6007,
7.1843

■ 46.3703, 77.2415,
24.9164

■ 88.5225, 6.4637,
6.1571

■ 45.6632, 78.5408,
26.8610

■ 96.9469, -3.3561,
5.4632

99.7173, -6.3205,
5.0827

Harmonies

Analogous

The Analogous color harmony consists of three colors that are next to each other on the color wheel.



60.2703, 47.4948, -10.1968



60.2687, 48.1394, 12.8045



60.2703, 33.5980, 26.3571

Triad

The Triadic color harmony groups three colors that are evenly spaced from another and form a triangle on the color wheel.



60.2703, 48.1354, 12.8057



60.2703, -31.8186, 27.0449



60.2703, -15.4820, -55.5140

Complementary

The Complementary color scheme is a pair of colors which are on the opposite of each other on the color wheel.



60.2687, 48.1394, 12.8045



89.1381, -41.6057, 3.9088

Split Complementary

Split-complementary colors differ from the complementary color scheme. The scheme consists of three colors, the original color and two neighbors of the complement color.



60.2703, -32.8871, -35.4531



60.2687, 48.1394, 12.8045



60.2703, -41.2664, 14.2223

Square

The Square scheme is like the rectangle color scheme, but the four colors are evenly spaced on the color wheel.



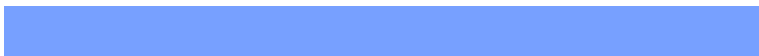
60.2703, 48.1354, 12.8057



60.2703, -13.7953, 32.1418



60.2703, -41.6244, -8.1080



60.2703, 8.1407, -56.3761

Rectangle

The Rectangle color scheme consists of four colors that form a rectangle on the color wheel.



60.2687, 48.1394, 12.8045



60.2703, 18.3952, 30.7810



60.2703, -41.6244, -8.1080



60.2703, -22.1603, -50.5218

Sweetspot

The Sweet Spot groups the original color and five complimentary colors.



60.2703, 48.1354, 12.8057



86.4066, 10.6524, 6.6161



61.2827, 59.0606, -50.3047



39.2054, 5.9077, 3.1601

0.0000, NaN, NaN



46.2646, -2.4686, 2.5136

Same Dimension

The Same Dimension uses a secret algorithm to generate beautiful new colors.



60.2703, 48.1354, 12.8057



55.8587, 58.9354, 15.8263



69.9057, 23.1919, 28.1373



41.5579, 1.8302, 2.7323



32.9780, 56.7638, 19.0771



10.0993, 17.5081, 4.8762

Inverse Universe

The Inverse Universe completely reimagines the original color for something new.



60.2703, 48.1354, 12.8057



55.8587, 58.9354, 15.8263



75.0796, -17.0451, -26.7619



41.5579, 1.8302, 2.7323



32.9780, 56.7638, 19.0771



10.0993, 17.5081, 4.8762

Previews

White Background



This preview shows how the HunterLab color 60.2687, 48.1394, 12.8045 looks on a white background.

Color Contrast Check

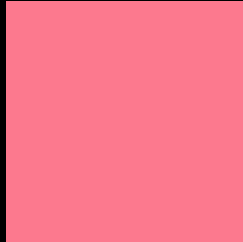
Large Text (above 18pt) WCAG AA × Fail

Any Text WCAG AA × Fail

Large Text (above 18pt) WCAG AAA × Fail

Any Text WCAG AAA × Fail

Black Background



This preview shows how the HunterLab color 60.2687, 48.1394, 12.8045 looks on a black background.

Color Contrast Check

Large Text (above 18pt) WCAG AA ✓ Pass

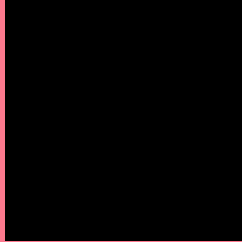
Any Text WCAG AA ✓ Pass

Large Text (above 18pt) WCAG AAA ✓ Pass

Any Text WCAG AAA ✓ Pass

If you want to check with other color combinations, try the [Color Contrast Checker](#).

HunterLab 60.2687, 48.1394, 12.8045 Background



This preview shows how black text looks on a background with the HunterLab color 60.2687, 48.1394, 12.8045.



This preview shows how white text looks on a background with the HunterLab color 60.2687, 48.1394,

Color Blindness Simulation

Color vision deficiency is a very complex topic, and I could not describe the different causes any better than Wikipedia does, so if you want to learn more, you should check out their [article about color blindness](#).

Dichromacy



Original Color

60.2687, 48.1394, 12.8045

Protanopia

60.4321, -1.9673, 2.7453

Deuteranopia

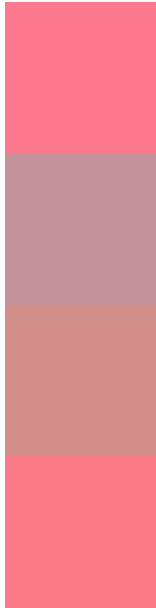
60.4838, 4.0561, 14.5080



Tritanopia

60.2610, 45.5027, 16.8024

Trichromacy



Original Color

60.2687, 48.1394, 12.8045

Protanomaly

59.2774, 15.0905, 5.3314

Deuteranomaly

59.6912, 19.4164, 13.2382

Tritanomaly

60.1478, 46.4389, 15.2810

Monochromacy



Original Color

60.2687, 48.1394, 12.8045

Achromatopsia

60.5188, -3.2291, 3.2881

Achromatomaly

59.2861, 13.7073, 5.7595

CSS Examples

Text

The CSS property to change the color of the text to HunterLab 60.2687, 48.1394, 12.8045 is called "color". The color property can be set on classes, ids or directly on the HTML element.

This example shows how text in the color `rgb(252, 121, 142)` looks like.

```
.text, #text, p{  
    color:rgb(252, 121, 142)  
}
```

If you want to add a text shadow in that color use the text-shadow property, you can generate a text shadow directly with our [CSS Text Shadow Generator](#).

Here you see how black text with a 4 pixel rgb(252, 121, 142) colored shadow looks like.

```
.shadow{ text-shadow: 4px 4px 2px rgb(252, 121, 142) }
```

Border

The CSS property to change the border of an element to HunterLab 60.2687, 48.1394, 12.8045 is called "border". The border property can be set on classes, ids or directly on the HTML element.

This example shows the color as border, it can be applied via the CSS property "border" or "border-color".

```
.border, #border, table{ border:4px solid rgb(252, 121, 142) }
```


If only the border color should be changed use the property `border-color`.

```
.border{ border-color:rgb(252, 121, 142) }
```

If you want to add a box shadow in that color use:

Here you see how a box with a 4 pixel `rgb(252, 121, 142)` colored shadow looks like.

```
.boxshadow{ -moz-box-shadow:4px 4px 4px  
4px rgb(252, 121, 142); -webkit-box-  
shadow:4px 4px 4px 4px rgb(252, 121, 142);  
box-shadow:4px 4px 4px 4px rgb(252, 121,  
142) }
```

Background

The CSS property to change the background color of an element to HunterLab 60.2687, 48.1394, 12.8045 is called "background". The background property can be set on classes, ids or directly on the HTML element.

```
.background, #background, body{  
background: rgb(252, 121, 142) }
```

If only the background color should be changed can be used:

```
.background{ background-color: rgb(252,  
121, 142) }
```

This example shows the color as background, it is applied via the CSS property "background".

To optimize and compress your CSS code, you can use our [online CSS compressor and optimizer](#) based on csstidy. If you want to create a linear or radial gradient as background or border, check our [CSS Gradient Generator](#).

Hey! You found this booklet interesting? Support Converting Colors with the new Membership Option!

The pro membership hides all ads, plus gives you double the colors in the color bucket, and more awesome pro features!

[Learn more, Memberships starting at \\$2.50/m!](#)

**Follow me
on Twitter!**

@ConvertingColor