

Converting Colors

HunterLab(60.2004, 11.6173,
7.1652)

Have a look what the booklet for
HunterLab(60.2004, 11.6173,
7.1652) contains.

HunterLab(60.3255, 11.5060, 7.3267)	3
<i>Conversions</i>	4
<i>Details</i>	6
<i>Harmonies</i>	12
<i>Previews</i>	24
<i>Color Blindness Simulation</i>	28
<i>CSS Examples</i>	31

Color

**HunterLab(60.3255, 11.5060,
7.3267)**

Conversions

Conversions Part 1

Format	Color
Hex	C3989A
RGB	195, 152, 154
RGB Percent	76%, 60%, 60%
CMY	0.2353, 0.4039, 0.3961
CMYK	0.00, 0.22, 0.21, 0.24
HSL	357°, 26%, 68%
HSV	357°, 22%, 76%
XYZ	39.5666, 36.3917, 35.5107
YIQ	165.0850, 24.9860, 9.7380

Conversions

Conversions Part 2

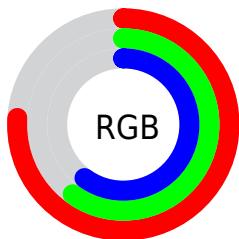
Format	Color
RYB	195, 152, 154
Decimal	12818586
CIELab	66.82, 16.36, 5.12
CIElCh	67, 17.143, 17.392
Yxy	36.3933, 0.3550, 0.3265
Android (android.graphics.Color)	4291008666 (0xFFC3989A)
YUV	165.0850, -5.4649, 26.2355
Hunter-Lab	60.3255, 11.5060, 7.3267

Details

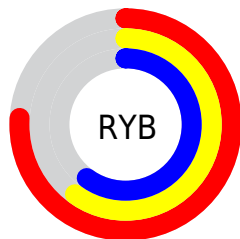
The HunterLab color **60.3255, 11.5060, 7.3267** is a light color, and the websafe version is hex **CC9999**. A complement of this color would be **70.3966, -16.4662, 0.5954**, and the grayscale version is **61.3908, -3.2757, 3.3355**.

A 20% lighter version of the original color is **83.3019, 11.9351, 9.0660**, and **39.9366, 10.9493, 5.7501** is the 20% darker color. If you saturate the color by 10%, you get **54.7747, 18.9439, 9.1097**, and if you desaturate by 10%, it is **66.2726, 4.3327, 5.7263**.

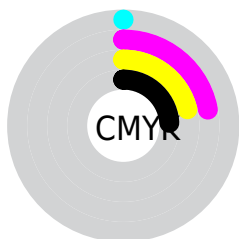
Distribution



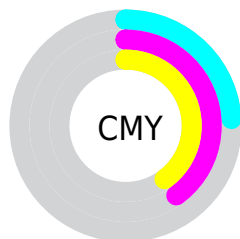
- Red (76%)
- Green (60%)
- Blue (60%)



- Red (76%)
- Yellow (60%)
- Blue (60%)



- Cyan (0%)
- Magenta (22%)
- Yellow (21%)
- Black (24%)





- Cyan (24%)
- Magenta (40%)
- Yellow (40%)

Brightness & Saturation Gradients


These gradients show how the HunterLab color 60.3255, 11.5060, 7.3267 changes by changing the brightness by 10 percent. The first figure shows a shift by +10% for each color and the second figure -10%.


Similar to the brightness gradients but the following saturation gradients show a change of the HunterLab color 60.3255, 11.5060, 7.3267 by changing the saturation by 10% instead.


 60.3255, 11.5060,
7.3267


 60.3255, 11.5060,
7.3267


181.8451, 11.0637,
15.8512

 49.7374, 11.2376,
6.4804


 83.4498, 11.8072,
9.0802

 39.8523, 10.8818,
5.6507


 95.9154, 11.8590,
9.9866

 30.7258, 10.4231,
4.8359


108.9465, 11.8517,
10.9134

 22.4271, 9.8433,
4.0310

122.5195, 11.7898,
11.8606

 15.0490, 9.1180,
3.2267

136.6135, 11.6770,
12.8282

 8.6888, 8.3784,
2.9175

151.2100, 11.5166,

0.0000, INF, NaN

13.8159

0.0000, NaN, NaN

166.2923, 11.3113,
14.8237

0.0000, NaN, NaN

■ 60.3255, 11.5060,
7.3267

■ 60.3255, 11.5060,
7.3267

■ 54.7747, 18.9439,
9.1097

■ 66.2726, 4.3327,
5.7263

■ 49.6925, 26.5889,
11.0749

■ 72.5506, -2.5617,
4.2896

■ 45.1727, 34.2748,
13.1982

■ 79.1123, -9.1988,
2.9972

■ 41.3206, 41.6858,
15.4062

■ 85.9192, -15.6090,
1.8287

■ 38.2426, 48.3255,
17.5602

■ 92.9408, -21.8252,
0.7654

■ 36.0205, 53.5805,
19.4609

■ 95.0485, -23.0146,
-0.8495

■ 34.6749, 56.9310,
20.9007

■ 34.0911, 58.4402,
21.5777

Harmonies

Analogous

The Analogous color harmony consists of three colors that are next to each other on the color wheel.



60.3269, 11.8526, 0.1409



60.3255, 11.5060, 7.3267



60.3269, 7.0883, 12.7221

Triad

The Triadic color harmony groups three colors that are evenly spaced from another and form a triangle on the color wheel.



60.3269, 11.5039, 7.3277



60.3269, -13.6956, 12.0288



60.3269, -6.4072, -12.0713

Complementary

The Complementary color scheme is a pair of colors which are on the opposite of each other on the color wheel.



60.3255, 11.5060, 7.3267



70.3966, -16.4662, 0.5954

Split Complementary

Split-complementary colors differ from the complementary color scheme. The scheme consists of three colors, the original color and two neighbors of the complement color.



60.3269, -12.8835, -7.9791



60.3255, 11.5060, 7.3267



60.3269, -16.9481, 6.2661

Square

The Square scheme is like the rectangle color scheme, but the four colors are evenly spaced on the color wheel.



60.3269, 11.5039, 7.3277



60.3269, -7.5665, 15.1944



60.3269, -16.6584, -1.0611



60.3269, 1.2488, -11.6940

Rectangle

The Rectangle color scheme consists of four colors that form a rectangle on the color wheel.



60.3255, 11.5060, 7.3267



60.3269, 2.5518, 14.8506



60.3269, -16.6584, -1.0611



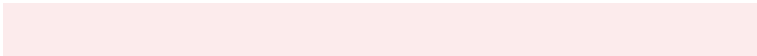
60.3269, -8.7867, -11.1534

Sweetspot

The Sweet Spot groups the original color and five complimentary colors.



60.3269, 11.5039, 7.3277



92.7913, 1.1948, 6.6876



61.4134, 17.6054, -11.6941



43.1807, 0.8259, 3.1852

0.0000, NaN, NaN



46.2646, -2.4686, 2.5136

Same Dimension

The Same Dimension uses a secret algorithm to generate beautiful new colors.



60.3269, 11.5039, 7.3277



77.4290, 19.6893, 10.8145



65.6724, 1.4144, 13.6711



31.7574, 1.1477, 2.4896



27.4902, 47.1372, 17.3026



5.7375, 9.8844, 3.2517

Inverse Universe

The Inverse Universe completely reimagines the original color for something new.



60.3269, 11.5039, 7.3277



77.4290, 19.6893, 10.8145



64.4442, -6.8104, -7.9097



31.7574, 1.1477, 2.4896



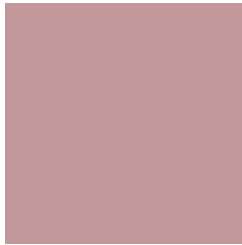
27.4902, 47.1372, 17.3026



5.7375, 9.8844, 3.2517

Previews

White Background



This preview shows how the HunterLab color 60.3255, 11.5060, 7.3267 looks on a white background.

Color Contrast Check

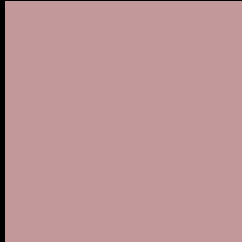
Large Text (above 18pt) WCAG AA × Fail

Any Text WCAG AA × Fail

Large Text (above 18pt) WCAG AAA × Fail

Any Text WCAG AAA × Fail

Black Background



This preview shows how the HunterLab color 60.3255, 11.5060, 7.3267 looks on a black background.

Color Contrast Check

Large Text (above 18pt) WCAG AA ✓ Pass

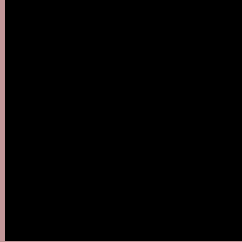
Any Text WCAG AA ✓ Pass

Large Text (above 18pt) WCAG AAA ✓ Pass

Any Text WCAG AAA ✓ Pass

If you want to check with other color combinations, try the [Color Contrast Checker](#).

HunterLab 60.3255, 11.5060, 7.3267 Background



This preview shows how black text looks on a background with the HunterLab color 60.3255, 11.5060, 7.3267.



This preview shows how white text looks on a background with the HunterLab color 60.3255, 11.5060,

Color Blindness Simulation

Color vision deficiency is a very complex topic, and I could not describe the different causes any better than Wikipedia does, so if you want to learn more, you should check out their [article about color blindness](#).

Dichromacy



Original Color

60.3255, 11.5060, 7.3267

Protanopia

60.4034, -2.3018, 4.5353

Deuteranopia

60.2984, 4.2987, 7.5978



Tritanopia

60.3967, 13.5679, 3.8976

Trichromacy



Original Color

60.3255, 11.5060, 7.3267

Protanomaly

60.2241, 2.8797, 5.3142

Deuteranomaly

60.2556, 7.0183, 7.5981

Tritanomaly

60.3094, 13.1133, 5.1454

Monochromacy



Original Color

60.3255, 11.5060, 7.3267

Achromatopsia

61.3402, -3.2730, 3.3327

Achromatomaly

60.7823, 2.0199, 4.5988

CSS Examples

Text

The CSS property to change the color of the text to HunterLab 60.3255, 11.5060, 7.3267 is called "color". The color property can be set on classes, ids or directly on the HTML element.

This example shows how text in the color `rgb(195, 152, 154)` looks like.

```
.text, #text, p{  
    color:rgb(195, 152, 154)  
}
```

If you want to add a text shadow in that color use the text-shadow property, you can generate a text shadow directly with our [CSS Text Shadow Generator](#).

Here you see how black text with a 4 pixel rgb(195, 152, 154) colored shadow looks like.

```
.shadow{ text-shadow: 4px 4px 2px rgb(195, 152, 154) }
```

Border

The CSS property to change the border of an element to HunterLab 60.3255, 11.5060, 7.3267 is called "border". The border property can be set on classes, ids or directly on the HTML element.

This example shows the color as border, it can be applied via the CSS property "border" or "border-color".

```
.border, #border, table{ border:4px solid rgb(195, 152, 154) }
```


If only the border color should be changed use the property `border-color`.

```
.border{ border-color:rgb(195, 152, 154) }
```

If you want to add a box shadow in that color use:

Here you see how a box with a 4 pixel `rgb(195, 152, 154)` colored shadow looks like.

```
.boxshadow{ -moz-box-shadow:4px 4px 4px 4px rgb(195, 152, 154); -webkit-box-shadow:4px 4px 4px 4px rgb(195, 152, 154); box-shadow:4px 4px 4px 4px rgb(195, 152, 154) }
```

Background

The CSS property to change the background color of an element to HunterLab 60.3255, 11.5060, 7.3267 is called "background". The background property can be set on classes, ids or directly on the HTML element.

```
.background, #background, body{  
background: rgb(195, 152, 154) }
```

If only the background color should be changed can be used:

```
.background{ background-color: rgb(195,  
152, 154) }
```

This example shows the color as background, it is applied via the CSS property "background".

To optimize and compress your CSS code, you can use our [online CSS compressor and optimizer](#) based on csstidy. If you want to create a linear or radial gradient as background or border, check our [CSS Gradient Generator](#).

Hey! You found this booklet interesting? Support Converting Colors with the new Membership Option!

The pro membership hides all ads, plus gives you double the colors in the color bucket, and more awesome pro features!

[Learn more, Memberships starting at \\$2.50/m!](#)

**Follow me
on Twitter!**

@ConvertingColor