

Converting Colors

HunterLab(60.2514, 3.2273,
14.6272)

Have a look what the booklet for
HunterLab(60.2514, 3.2273,
14.6272) contains.

HunterLab(60.2514, 3.2273, 14.6272)	3
<i>Conversions</i>	4
<i>Details</i>	6
<i>Harmonies</i>	12
<i>Previews</i>	24
<i>Color Blindness Simulation</i>	28
<i>CSS Examples</i>	31

Color

**HunterLab(60.2514, 3.2273,
14.6272)**

Conversions

Conversions Part 1

Format	Color
Hex	BA9D87
RGB	186, 157, 135
RGB Percent	73%, 62%, 53%
CMY	0.2706, 0.3843, 0.4706
CMYK	0.00, 0.16, 0.27, 0.27
HSL	26°, 27%, 63%
HSV	26°, 27%, 73%
XYZ	36.6799, 36.3023, 27.9955
YIQ	163.1630, 24.3460, -0.6940

Conversions

Conversions Part 2

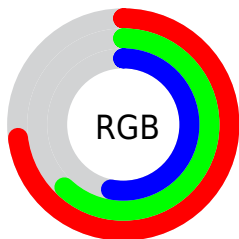
Format	Color
RYB	186, 174, 135
Decimal	12230023
CIELab	66.75, 7.34, 15.50
CIELCh	67, 17.149, 64.651
Yxy	36.3040, 0.3632, 0.3595
Android (android.graphics.Color)	4290420103 (0xFFBA9D87)
YUV	163.1630, -13.8844, 20.0280
Hunter-Lab	60.2514, 3.2273, 14.6272

Details

The HunterLab color $60.2514, 3.2273, 14.6272$ is a light color, and the websafe version is hex $CC9999$. A complement of this color would be $59.3684, -7.2916, -9.9384$, and the grayscale version is $60.6349, -3.2353, 3.2944$.

A 20% lighter version of the original color is $83.5299, 2.5180, 17.7445$, and $39.8365, 3.3657, 11.8148$ is the 20% darker color. If you saturate the color by 10%, you get $56.9209, 6.2912, 17.8461$, and if you desaturate by 10%, it is $63.7254, 0.4523, 10.9930$.

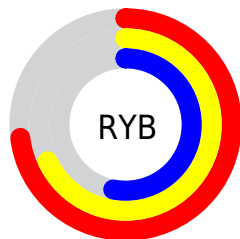
Distribution



Red (73%)

Green (62%)

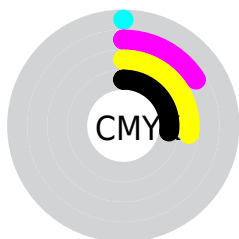
Blue (53%)



Red (73%)

Yellow (68%)

Blue (53%)

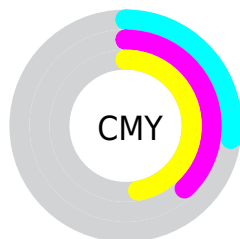


Cyan (0%)

Magenta (16%)

Yellow (27%)

Black (27%)



Cyan (27%)

Magenta (38%)

Yellow (47%)

Brightness & Saturation Gradients

These gradients show how the HunterLab color 60.2514, 3.2273, 14.6272 changes by changing the brightness by 10 percent. The first figure shows a shift by +10% for each color and the second figure -10%.

Similar to the brightness gradients but the following saturation gradients show a change of the HunterLab color 60.2514, 3.2273, 14.6272 by changing the saturation by 10% instead.

60.2514, 3.2273,
14.6272

60.2514, 3.2273,
14.6272

181.7381, -0.4959,
27.2700

49.6680, 3.4057,
13.1804

83.3673, 2.6987,
17.4626

39.7878, 3.5225,
11.6980

95.8289, 2.3620,
18.8636

30.6666, 3.5666,
10.1629

108.8563, 1.9814,
20.2602

22.3738, 3.5254,
8.5472

122.4256, 1.5595,
21.6557

15.0024, 3.3801,
6.8036

136.5162, 1.0989,
23.0526

8.6454, 3.2576,
6.0518

151.1094, 0.6016,

0.0000, NaN, NaN

24.4530

0.0000, NaN, NaN

166.1884, 0.0695,
25.8584

0.0000, NaN, NaN

■ 60.2514, 3.2273,
14.6272

■ 60.2514, 3.2273,
14.6272

■ 56.9209, 6.2912,
17.8461

■ 63.7254, 0.4523,
10.9930

■ 53.7444, 9.6664,
20.5929

■ 67.3260, -2.0477,
6.9896

■ 50.7392, 13.3598,
22.8105

■ 71.0430, -4.2966,
2.6609

■ 47.9228, 17.3679,
24.4412

■ 74.8665, -6.3159,
-1.9561

■ 45.3133, 21.6685,
25.4349

■ 78.7875, -8.1266,
-6.8294

■ 42.9290, 26.2124,
25.7626

■ 82.7984, -9.7482,
-11.9318

■ 40.7835, 30.9039,
25.4712

■ 86.5032, -13.3645,
-11.7761

■ 40.2654, 32.1026,
25.3734

■ 89.9604, -18.6661,
-7.2465

■ 93.4845, -23.8923,
-2.8160

Harmonies

Analogous

The Analogous color harmony consists of three colors that are next to each other on the color wheel.



60.2528, 9.3970, 10.7218



60.2514, 3.2273, 14.6272



60.2528, -4.4090, 15.6515

Triad

The Triadic color harmony groups three colors that are evenly spaced from another and form a triangle on the color wheel.



60.2528, 3.2252, 14.6281



60.2528, -17.2209, 2.1314



60.2528, 5.3962, -9.4368

Complementary

The Complementary color scheme is a pair of colors which are on the opposite of each other on the color wheel.



60.2514, 3.2273, 14.6272



59.3684, -7.2916, -9.9384

Split Complementary

Split-complementary colors differ from the complementary color scheme. The scheme consists of three colors, the original color and two neighbors of the complement color.



60.2528, -2.0180, -12.4415



60.2514, 3.2273, 14.6272



60.2528, -14.8739, -5.2523

Square

The Square scheme is like the rectangle color scheme, but the four colors are evenly spaced on the color wheel.



60.2528, 3.2252, 14.6281



60.2528, -15.9722, 8.9810



60.2528, -9.4017, -10.8223



60.2528, 10.6937, -3.0395

Rectangle

The Rectangle color scheme consists of four colors that form a rectangle on the color wheel.



60.2514, 3.2273, 14.6272



60.2528, -9.2453, 14.6855



60.2528, -9.4017, -10.8223



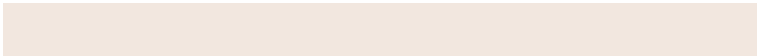
60.2528, 3.0556, -10.9111

Sweetspot

The Sweet Spot groups the original color and five complimentary colors.



60.2528, 3.2252, 14.6281



90.2905, -2.5283, 9.8100



55.2042, 18.7713, -3.7592



42.0219, -0.9558, 4.9986



97.7295, -5.2146, 5.3098



44.2712, -2.3622, 2.4053

Same Dimension

The Same Dimension uses a secret algorithm to generate beautiful new colors.



60.2528, 3.2252, 14.6281



78.3468, 6.8230, 22.4197



67.4850, -8.8590, 21.2902



31.0361, -0.7408, 3.6243



33.2426, 25.7911, 20.9354



7.1625, 2.7419, 4.4615

Inverse Universe

The Inverse Universe completely reimagines the original color for something new.



59.3684, -7.2916, -9.9384



76.8985, -10.3289, -17.7170



52.1865, 4.8694, -20.5356



30.8935, -2.4470, -0.3506



30.7193, 1.3762, -41.3672



6.7314, -1.3130, -5.5792

Previews

White Background



This preview shows how the HunterLab color 60.2514, 3.2273, 14.6272 looks on a white background.

Color Contrast Check

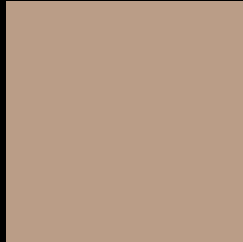
Large Text (above 18pt) WCAG AA × Fail

Any Text WCAG AA × Fail

Large Text (above 18pt) WCAG AAA × Fail

Any Text WCAG AAA × Fail

Black Background



This preview shows how the HunterLab color 60.2514, 3.2273, 14.6272 looks on a black background.

Color Contrast Check

Large Text (above 18pt) WCAG AA ✓ Pass

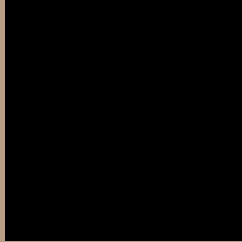
Any Text WCAG AA ✓ Pass

Large Text (above 18pt) WCAG AAA ✓ Pass

Any Text WCAG AAA ✓ Pass

If you want to check with other color combinations, try the [Color Contrast Checker](#).

HunterLab 60.2514, 3.2273, 14.6272 Background



This preview shows how black text looks on a background with the HunterLab color 60.2514, 3.2273, 14.6272.



This preview shows how white text looks on a background with the HunterLab color 60.2514, 3.2273,

Color Blindness Simulation

Color vision deficiency is a very complex topic, and I could not describe the different causes any better than Wikipedia does, so if you want to learn more, you should check out their [article about color blindness](#).

Dichromacy



Original Color

60.2514, 3.2273, 14.6272

Protanopia

60.2773, -3.9053, 13.4233

Deuteranopia

60.1810, 4.4291, 14.5785



Tritanopia

60.2643, 10.5542, 2.2976

Trichromacy



Original Color

60.2514, 3.2273, 14.6272

Protanomaly

60.1480, -1.4181, 13.7088

Deuteranomaly

60.0758, 4.0760, 14.4679

Tritanomaly

60.1129, 8.0182, 7.0284

Monochromacy



Original Color

60.2514, 3.2273, 14.6272

Achromatopsia

60.5188, -3.2291, 3.2881

Achromatomaly

60.3718, -1.3118, 7.5809

CSS Examples

Text

The CSS property to change the color of the text to HunterLab 60.2514, 3.2273, 14.6272 is called "color". The color property can be set on classes, ids or directly on the HTML element.

This example shows how text in the color `rgb(186, 157, 135)` looks like.

```
.text, #text, p{  
    color:rgb(186, 157, 135)  
}
```

If you want to add a text shadow in that color use the text-shadow property, you can generate a text shadow directly with our [CSS Text Shadow Generator](#).

Here you see how black text with a 4 pixel rgb(186, 157, 135) colored shadow looks like.

```
.shadow{ text-shadow: 4px 4px 2px rgb(186, 157, 135) }
```

Border

The CSS property to change the border of an element to HunterLab 60.2514, 3.2273, 14.6272 is called "border". The border property can be set on classes, ids or directly on the HTML element.

This example shows the color as border, it can be applied via the CSS property "border" or "border-color".

```
.border, #border, table{ border:4px solid rgb(186, 157, 135) }
```


If only the border color should be changed use the property `border-color`.

```
.border{ border-color:rgb(186, 157, 135) }
```

If you want to add a box shadow in that color use:

Here you see how a box with a 4 pixel `rgb(186, 157, 135)` colored shadow looks like.

```
.boxshadow{ -moz-box-shadow:4px 4px 4px  
4px rgb(186, 157, 135); -webkit-box-  
shadow:4px 4px 4px 4px rgb(186, 157, 135);  
box-shadow:4px 4px 4px 4px rgb(186, 157,  
135) }
```

Background

The CSS property to change the background color of an element to HunterLab 60.2514, 3.2273, 14.6272 is called "background". The background property can be set on classes, ids or directly on the HTML element.

```
.background, #background, body{  
background: rgb(186, 157, 135) }
```

If only the background color should be changed can be used:

```
.background{ background-color: rgb(186,  
157, 135) }
```

This example shows the color as background, it is applied via the CSS property "background".

To optimize and compress your CSS code, you can use our [online CSS compressor and optimizer](#) based on csstidy. If you want to create a linear or radial gradient as background or border, check our [CSS Gradient Generator](#).

Hey! You found this booklet interesting? Support Converting Colors with the new Membership Option!

The pro membership hides all ads, plus gives you double the colors in the color bucket, and more awesome pro features!

[Learn more, Memberships starting at \\$2.50/m!](#)

**Follow me
on Twitter!**

@ConvertingColor