

# Converting Colors

HunterLab(60.2762, 10.0652,  
6.0086)

Have a look what the booklet for  
HunterLab(60.2762, 10.0652,  
6.0086) contains.

<b>HunterLab(60.2438, 10.0189, 5.9041)</b> .....	3
<b><i>Conversions</i></b> .....	4
<b><i>Details</i></b> .....	6
<b><i>Harmonies</i></b> .....	12
<b><i>Previews</i></b> .....	24
<b><i>Color Blindness Simulation</i></b> .....	28
<b><i>CSS Examples</i></b> .....	31

# Color

**HunterLab(60.2438, 10.0189,  
5.9041)**

# Conversions

## Conversions Part 1

Format	Color
Hex	BF999D
RGB	191, 153, 157
RGB Percent	75%, 60%, 62%
CMY	0.2510, 0.4000, 0.3843
CMYK	0.00, 0.20, 0.18, 0.25
HSL	354°, 23%, 67%
HSV	354°, 20%, 75%
XYZ	38.9629, 36.2932, 36.8500
YIQ	164.8180, 21.3640, 9.3000

# Conversions

## Conversions Part 2

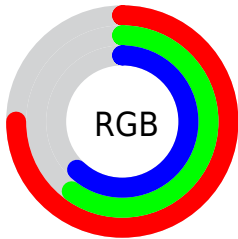
<b>Format</b>	<b>Color</b>
<b>RYB</b>	191, 153, 157
Decimal	12556701
CIELab	66.74, 14.77, 3.29
CIELCh	67, 15.134, 12.539
Yxy	36.2948, 0.3476, 0.3237
Android (android.graphics.Color)	4290746781 (0xFFBF999D)
YUV	164.8180, -3.8543, 22.9616
Hunter-Lab	60.2438, 10.0189, 5.9041

# Details

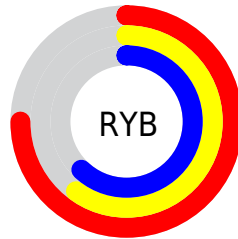
The HunterLab color  $60.2438, 10.0189, 5.9041$  is a light color, and the websafe version is hex  $CC9999$ . A complement of this color would be  $69.0092, -15.3906, 1.8593$ , and the grayscale version is  $61.2757, -3.2695, 3.3292$ .

A 20% lighter version of the original color is  $83.2378, 10.4122, 7.5756$ , and  $39.8268, 9.4959, 4.4079$  is the 20% darker color. If you saturate the color by 10%, you get  $54.7641, 17.3464, 7.2254$ , and if you desaturate by 10%, it is  $66.0916, 2.9249, 4.8109$ .

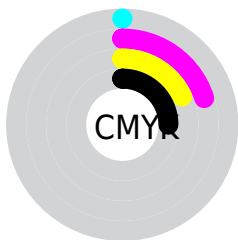
# Distribution



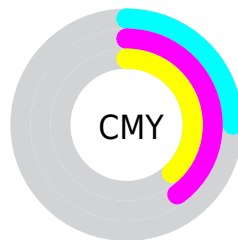
- Red (75%)
- Green (60%)
- Blue (62%)



- Red (75%)
- Yellow (60%)
- Blue (62%)



- Cyan (0%)
- Magenta (20%)
- Yellow (18%)
- Black (25%)



- Cyan (25%)
- Magenta (40%)
- Yellow (38%)

# Brightness & Saturation Gradients

These gradients show how the HunterLab color 60.2438, 10.0189, 5.9041 changes by changing the brightness by 10 percent. The first figure shows a shift by +10% for each color and the second figure -10%.

Similar to the brightness gradients but the following saturation gradients show a change of the HunterLab color 60.2438, 10.0189, 5.9041 by changing the saturation by 10% instead.



60.2438, 10.0189,  
5.9041

60.2438, 10.0189,  
5.9041

181.7271, 9.0121,  
13.7320

49.6608, 9.8265,  
5.1574

83.3588, 10.1784,  
7.4767

39.7811, 9.5507,  
4.4351

95.8201, 10.1635,  
8.2998

30.6605, 9.1763,  
3.7378

108.8470, 10.0919,  
9.1472

22.3684, 8.6857,  
3.0642

122.4160, 9.9680,  
10.0185

14.9976, 8.0545,  
2.4104

136.5062, 9.7952,  
10.9130

8.6410, 7.4284,  
2.0466

151.0990, 9.5765,

0.0000, INF, NaN

11.8304

0.0000, NaN, NaN

166.1777, 9.3148,  
12.7702

0.0000, NaN, NaN

■ 60.2438, 10.0189,  
5.9041

■ 60.2438, 10.0189,  
5.9041

■ 54.7641, 17.3464,  
7.2254

■ 66.0916, 2.9249,  
4.8109

■ 49.7181, 24.8591,  
8.7956

■ 72.2476, -3.9233,  
3.9130

■ 45.1922, 32.4140,  
10.6226

■ 78.6689, -10.5452,  
3.1826

■ 41.2846, 39.7354,  
12.6765

■ 85.3204, -16.9675,  
2.5937

■ 38.0983, 46.3790,  
14.8674

■ 92.1740, -23.2193,  
2.1241

■ 35.7202, 51.7687,  
17.0307

■ 94.7715, -24.0319,  
-1.2105

■ 34.1883, 55.3669,  
18.9485

■ 33.3652, 57.2591,  
20.3632

■ 33.3576, 57.2782,  
20.3738

# Harmonies

## Analogous

The Analogous color harmony consists of three colors that are next to each other on the color wheel.



60.2452, 9.7035, -0.5541



60.2438, 10.0189, 5.9041



60.2452, 6.6723, 11.0619

# Triad

The Triadic color harmony groups three colors that are evenly spaced from another and form a triangle on the color wheel.



60.2452, 10.0169, 5.9051



60.2452, -11.7649, 11.7050



60.2452, -7.0725, -9.7631

# Complementary

The Complementary color scheme is a pair of colors which are on the opposite of each other on the color wheel.



60.2438, 10.0189, 5.9041



69.0092, -15.3906, 1.8593

# Split Complementary

Split-complementary colors differ from the complementary color scheme. The scheme consists of three colors, the original color and two neighbors of the complement color.



60.2452, -12.5083, -5.7036



60.2438, 10.0189, 5.9041



60.2452, -15.1342, 6.8763

# Square

The Square scheme is like the rectangle color scheme, but the four colors are evenly spaced on the color wheel.



60.2452, 10.0169, 5.9051



60.2452, -6.0167, 14.1537



60.2452, -15.4002, 0.5297



60.2452, -0.3668, -10.0974



# Rectangle

The Rectangle color scheme consists of four colors that form a rectangle on the color wheel.



60.2438, 10.0189, 5.9041



60.2452, 2.9006, 13.2609



60.2452, -15.4002, 0.5297



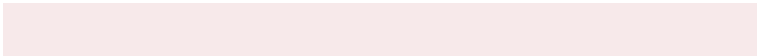
60.2452, -9.1013, -8.7699

# Sweetspot

The Sweet Spot groups the original color and five complimentary colors.



60.2452, 10.0169, 5.9051



91.5328, 0.3958, 5.9531



60.8736, 14.2351, -10.2491



42.6394, 0.4707, 2.8280



98.8636, -5.2751, 5.3714



45.2661, -2.4153, 2.4594



# Same Dimension

The Same Dimension uses a secret algorithm to generate beautiful new colors.



60.2452, 10.0169, 5.9051



77.2682, 17.7695, 8.6558



64.2053, 2.0702, 11.7675



30.9067, 1.1835, 2.2134



27.0528, 46.4742, 16.3543



5.4054, 9.3874, 2.4814



# Inverse Universe

The Inverse Universe completely reimagines the original color for something new.



60.2452, 10.0169, 5.9051



77.2682, 17.7695, 8.6558



64.6190, -7.6923, -5.5425



30.9067, 1.1835, 2.2134



27.0528, 46.4742, 16.3543

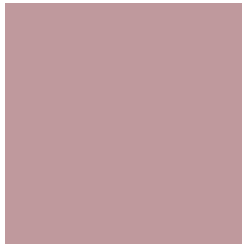


5.4054, 9.3874, 2.4814



# Previews

## White Background



This preview shows how the HunterLab color 60.2438, 10.0189, 5.9041 looks on a white background.

## Color Contrast Check

Large Text (above 18pt) WCAG AA × Fail

Any Text WCAG AA × Fail

Large Text (above 18pt) WCAG AAA × Fail

Any Text WCAG AAA × Fail



# Black Background



This preview shows how the HunterLab color 60.2438, 10.0189, 5.9041 looks on a black background.

## Color Contrast Check

Large Text (above 18pt) WCAG AA ✓ Pass

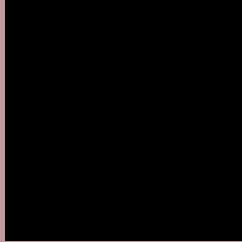
Any Text WCAG AA ✓ Pass

Large Text (above 18pt) WCAG AAA ✓ Pass

Any Text WCAG AAA ✓ Pass

If you want to check with other color combinations, try the [Color Contrast Checker](#).

# HunterLab 60.2438, 10.0189, 5.9041 Background



This preview shows how black text looks on a background with the HunterLab color 60.2438, 10.0189, 5.9041.



This preview shows how white text looks on a background with the HunterLab color 60.2438, 10.0189,



# Color Blindness Simulation

Color vision deficiency is a very complex topic, and I could not describe the different causes any better than Wikipedia does, so if you want to learn more, you should check out their [article about color blindness](#).

## Dichromacy



### Original Color

60.2438, 10.0189, 5.9041

### Protanopia

60.3727, -2.2913, 3.5919

### Deuteranopia

60.2810, 4.4070, 6.2866



## Tritanopia

60.2854, 11.9522, 2.8148

# Trichromacy



## Original Color

60.2438, 10.0189, 5.9041

## Protanomaly

60.2769, 1.7124, 4.4591

## Deuteranomaly

60.4082, 6.2667, 6.4627

## Tritanomaly

60.1965, 11.4871, 4.0834

# Monochromacy



## Original Color

60.2438, 10.0189, 5.9041

## Achromatopsia

61.3402, -3.2730, 3.3327

## Achromatomaly

60.9073, 1.0327, 4.2742

# CSS Examples

## Text

The CSS property to change the color of the text to HunterLab 60.2438, 10.0189, 5.9041 is called "color". The color property can be set on classes, ids or directly on the HTML element.

This example shows how text in the color `rgb(191, 153, 157)` looks like.

```
.text, #text, p{  
    color:rgb(191, 153, 157)  
}
```

If you want to add a text shadow in that color use the text-shadow property, you can generate a text shadow directly with our [CSS Text Shadow Generator](#).

Here you see how black text with a 4 pixel rgb(191, 153, 157) colored shadow looks like.

```
.shadow{ text-shadow: 4px 4px 2px rgb(191, 153, 157) }
```

## Border

The CSS property to change the border of an element to HunterLab 60.2438, 10.0189, 5.9041 is called "border". The border property can be set on classes, ids or directly on the HTML element.

This example shows the color as border, it can be applied via the CSS property "border" or "border-color".

```
.border, #border, table{ border:4px solid rgb(191, 153, 157) }
```



If only the border color should be changed use the property `border-color`.

```
.border{ border-color:rgb(191, 153, 157) }
```

If you want to add a box shadow in that color use:

Here you see how a box with a 4 pixel `rgb(191, 153, 157)` colored shadow looks like.

```
.boxshadow{ -moz-box-shadow:4px 4px 4px  
4px rgb(191, 153, 157); -webkit-box-  
shadow:4px 4px 4px 4px rgb(191, 153, 157);  
box-shadow:4px 4px 4px 4px rgb(191, 153,  
157) }
```

# Background

The CSS property to change the background color of an element to HunterLab 60.2438, 10.0189, 5.9041 is called "background". The background property can be set on classes, ids or directly on the HTML element.

```
.background, #background, body{  
background: rgb(191, 153, 157) }
```

If only the background color should be changed can be used:

```
.background{ background-color: rgb(191,  
153, 157) }
```

This example shows the color as background, it is applied via the CSS property "background".

To optimize and compress your CSS code, you can use our [online CSS compressor and optimizer](#) based on csstidy. If you want to create a linear or radial gradient as background or border, check our [CSS Gradient Generator](#).

Hey! You found this booklet interesting? Support Converting Colors with the new Membership Option!

The pro membership hides all ads, plus gives you double the colors in the color bucket, and more awesome pro features!

**[Learn more, Memberships starting at \\$2.50/m!](#)**

**Follow me  
on Twitter!**

@ConvertingColor