

Converting Colors

HunterLab(60.3185, 1.4745,
12.1409)

Have a look what the booklet for
HunterLab(60.3185, 1.4745,
12.1409) contains.

HunterLab(60.4756, 1.4190, 12.2002)	3
<i>Conversions</i>	4
<i>Details</i>	6
<i>Harmonies</i>	12
<i>Previews</i>	24
<i>Color Blindness Simulation</i>	28
<i>CSS Examples</i>	31

Color

**HunterLab(60.4756, 1.4190,
12.2002)**

Conversions

Conversions Part 1

Format	Color
Hex	B59F8E
RGB	181, 159, 142
RGB Percent	71%, 62%, 56%
CMY	0.2902, 0.3765, 0.4431
CMYK	0.00, 0.12, 0.22, 0.29
HSL	26°, 21%, 63%
HSV	26°, 22%, 71%
XYZ	36.3366, 36.5730, 30.7353
YIQ	163.6400, 18.5690, -0.6230

Conversions

Conversions Part 2

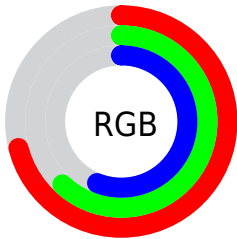
Format	Color
RYB	181, 172, 142
Decimal	11902862
CIELab	66.96, 5.32, 11.83
CIELCh	67, 12.972, 65.793
Yxy	36.5746, 0.3506, 0.3529
Android (android.graphics.Color)	4290092942 (0xFFB59F8E)
YUV	163.6400, -10.6685, 15.2247
Hunter-Lab	60.4756, 1.4190, 12.2002

Details

The HunterLab color $60.4756, 1.4190, 12.2002$ is a light color, and the websafe version is hex 999999 . A complement of this color would be $59.6967, -6.4802, -6.7471$, and the grayscale version is $60.8196, -3.2452, 3.3044$.

A 20% lighter version of the original color is $83.7157, 0.4828, 14.6067$, and $40.1086, 1.8906, 9.7804$ is the 20% darker color. If you saturate the color by 10%, you get $57.1899, 4.1747, 15.5782$, and if you desaturate by 10%, it is $63.8910, -1.0686, 8.4449$.

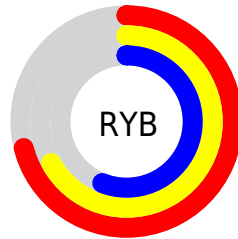
Distribution



Red (71%)

Green (62%)

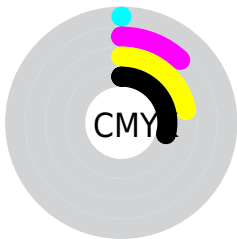
Blue (56%)



Red (71%)

Yellow (67%)

Blue (56%)

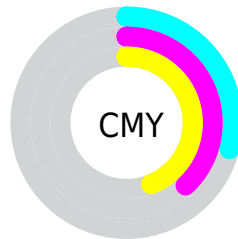


Cyan (0%)

Magenta (12%)

Yellow (22%)

Black (29%)



Cyan (29%)

Magenta (38%)

Yellow (44%)

Brightness & Saturation Gradients

These gradients show how the HunterLab color 60.4756, 1.4190, 12.2002 changes by changing the brightness by 10 percent. The first figure shows a shift by +10% for each color and the second figure -10%.

Similar to the brightness gradients but the following saturation gradients show a change of the HunterLab color 60.4756, 1.4190, 12.2002 by changing the saturation by 10% instead.

■ 60.4756, 1.4190,
12.2002

■ 60.4756, 1.4190,
12.2002

182.0619, -3.0655,
23.3518

■ 49.8782, 1.7029,
10.9730

■ 83.6170, 0.6962,
14.6415

■ 39.9830, 1.9320,
9.7300

■ 96.0906, 0.2692,
15.8630

■ 30.8457, 2.0967,
8.4602

■ 109.1292, -0.1982,
17.0894

■ 22.5351, 2.1868,
7.1441

122.7095, -0.7034,
18.3228

■ 15.1436, 2.1866,
5.7477

136.8106, -1.2445,
19.5646

■ 8.7758, 2.1755,
6.0660

151.4139, -1.8195,

0.0000, NaN, NaN

20.8162

0.0000, NaN, NaN

166.5027, -2.4270,
22.0784

0.0000, NaN, NaN

■ 60.4756, 1.4190,
12.2002

■ 60.4756, 1.4190,
12.2002

■ 57.1899, 4.1747,
15.5782

■ 63.8910, -1.0686,
8.4449

■ 54.0428, 7.2226,
18.5272

■ 67.4208, -3.3027,
4.3534

■ 51.0498, 10.5740,
20.9942

■ 71.0563, -5.3061,
-0.0351

■ 48.2265, 14.2337,
22.9235

■ 74.7885, -7.0994,
-4.6878

■ 45.5898, 18.1928,
24.2619

■ 78.6098, -8.7017,
-9.5763

■ 43.1568, 22.4217,
24.9681

■ 82.5133, -10.1311,
-14.6763

■ 40.9440, 26.8622,
25.0289

■ 85.9629, -14.3587,
-12.5339

■ 39.2473, 30.6746,
24.7210

■ 89.3089, -19.4517,
-8.1165

■ 92.7168, -24.4738,
-3.7960

Harmonies

Analogous

The Analogous color harmony consists of three colors that are next to each other on the color wheel.



60.4770, 6.0967, 9.1809



60.4756, 1.4190, 12.2002



60.4770, -4.3531, 12.9353

Triad

The Triadic color harmony groups three colors that are evenly spaced from another and form a triangle on the color wheel.



60.4770, 1.4171, 12.2011



60.4770, -13.9436, 2.2099



60.4770, 3.4403, -5.9738

Complementary

The Complementary color scheme is a pair of colors which are on the opposite of each other on the color wheel.



60.4756, 1.4190, 12.2002



59.6967, -6.4802, -6.7471

Split Complementary

Split-complementary colors differ from the complementary color scheme. The scheme consists of three colors, the original color and two neighbors of the complement color.



60.4770, -2.0990, -8.2586



60.4756, 1.4190, 12.2002



60.4770, -12.0239, -3.2561

Square

The Square scheme is like the rectangle color scheme, but the four colors are evenly spaced on the color wheel.



60.4770, 1.4171, 12.2011



60.4770, -13.0816, 7.4876



60.4770, -7.7411, -7.2201



60.4770, 7.2953, -1.2277

Rectangle

The Rectangle color scheme consists of four colors that form a rectangle on the color wheel.



60.4756, 1.4190, 12.2002



60.4770, -8.0127, 12.0964



60.4770, -7.7411, -7.2201



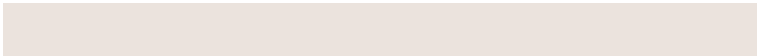
60.4770, 1.7058, -7.0746

Sweetspot

The Sweet Spot groups the original color and five complimentary colors.



60.4770, 1.4171, 12.2011



88.0580, -3.0983, 8.3717



56.4394, 13.3140, -1.9351



40.7986, -1.3521, 4.0543



95.4677, -5.0939, 5.1869



42.2927, -2.2566, 2.2978

Same Dimension

The Same Dimension uses a secret algorithm to generate beautiful new colors.



60.4770, 1.4171, 12.2011



78.7623, 3.6532, 18.6048



66.1643, -8.0393, 17.6967



30.1571, -0.7410, 3.5245



32.7900, 24.9628, 20.6421



6.7464, 2.3324, 4.1979

Inverse Universe

The Inverse Universe completely reimagines the original color for something new.



59.6967, -6.4802, -6.7471



77.4875, -9.2219, -12.3216



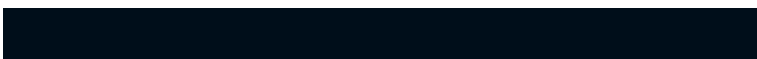
54.0520, 3.0292, -14.5930



29.9979, -2.3566, -0.3456



30.0040, 1.6369, -41.0359



6.2994, -1.3006, -5.0660

Previews

White Background



This preview shows how the HunterLab color 60.4756, 1.4190, 12.2002 looks on a white background.

Color Contrast Check

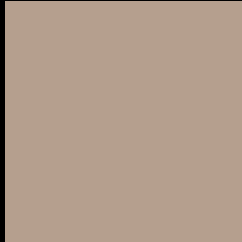
Large Text (above 18pt) WCAG AA × Fail

Any Text WCAG AA × Fail

Large Text (above 18pt) WCAG AAA × Fail

Any Text WCAG AAA × Fail

Black Background



This preview shows how the HunterLab color 60.4756, 1.4190, 12.2002 looks on a black background.

Color Contrast Check

Large Text (above 18pt) WCAG AA ✓ Pass

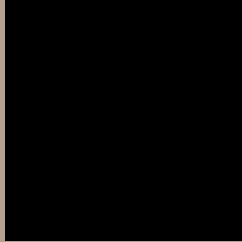
Any Text WCAG AA ✓ Pass

Large Text (above 18pt) WCAG AAA ✓ Pass

Any Text WCAG AAA ✓ Pass

If you want to check with other color combinations, try the [Color Contrast Checker](#).

HunterLab 60.4756, 1.4190, 12.2002 Background



This preview shows how black text looks on a background with the HunterLab color 60.4756, 1.4190, 12.2002.



This preview shows how white text looks on a background with the HunterLab color 60.4756, 1.4190,

Color Blindness Simulation

Color vision deficiency is a very complex topic, and I could not describe the different causes any better than Wikipedia does, so if you want to learn more, you should check out their [article about color blindness](#).

Dichromacy



Original Color

60.4756, 1.4190, 12.2002

Protanopia

60.6251, -3.9000, 11.4842

Deuteranopia

60.4202, 4.1328, 12.1905



Tritanopia

60.3515, 8.1474, 1.4148

Trichromacy



Original Color

60.4756, 1.4190, 12.2002

Protanomaly

60.6815, -2.2552, 11.9615

Deuteranomaly

60.4955, 2.9419, 12.2473

Tritanomaly

60.2601, 5.8877, 5.4081

Monochromacy



Original Color

60.4756, 1.4190, 12.2002

Achromatopsia

60.9293, -3.2510, 3.3104

Achromatomaly

60.6523, -1.6688, 6.5984

CSS Examples

Text

The CSS property to change the color of the text to HunterLab 60.4756, 1.4190, 12.2002 is called "color". The color property can be set on classes, ids or directly on the HTML element.

This example shows how text in the color `rgb(181, 159, 142)` looks like.

```
.text, #text, p{  
    color:rgb(181, 159, 142)  
}
```

If you want to add a text shadow in that color use the text-shadow property, you can generate a text shadow directly with our [CSS Text Shadow Generator](#).

Here you see how black text with a 4 pixel rgb(181, 159, 142) colored shadow looks like.

```
.shadow{ text-shadow: 4px 4px 2px rgb(181, 159, 142) }
```

Border

The CSS property to change the border of an element to HunterLab 60.4756, 1.4190, 12.2002 is called "border". The border property can be set on classes, ids or directly on the HTML element.

This example shows the color as border, it can be applied via the CSS property "border" or "border-color".

```
.border, #border, table{ border:4px solid rgb(181, 159, 142) }
```


If only the border color should be changed use the property `border-color`.

```
.border{ border-color:rgb(181, 159, 142) }
```

If you want to add a box shadow in that color use:

Here you see how a box with a 4 pixel `rgb(181, 159, 142)` colored shadow looks like.

```
.boxshadow{ -moz-box-shadow:4px 4px 4px 4px rgb(181, 159, 142); -webkit-box-shadow:4px 4px 4px 4px rgb(181, 159, 142); box-shadow:4px 4px 4px 4px rgb(181, 159, 142) }
```

Background

The CSS property to change the background color of an element to HunterLab 60.4756, 1.4190, 12.2002 is called "background". The background property can be set on classes, ids or directly on the HTML element.

```
.background, #background, body{  
background: rgb(181, 159, 142) }
```

If only the background color should be changed can be used:

```
.background{ background-color: rgb(181,  
159, 142) }
```

This example shows the color as background, it is applied via the CSS property "background".

To optimize and compress your CSS code, you can use our [online CSS compressor and optimizer](#) based on csstidy. If you want to create a linear or radial gradient as background or border, check our [CSS Gradient Generator](#).

Hey! You found this booklet interesting? Support Converting Colors with the new Membership Option!

The pro membership hides all ads, plus gives you double the colors in the color bucket, and more awesome pro features!

[Learn more, Memberships starting at \\$2.50/m!](#)

**Follow me
on Twitter!**

@ConvertingColor