

# Converting Colors

HunterLab(60.3717, 2.8827,  
9.3269)

Have a look what the booklet for  
HunterLab(60.3717, 2.8827, 9.3269)  
contains.

<b>HunterLab(60.3717, 2.8827, 9.3269)</b> .....	3
<b><i>Conversions</i></b> .....	4
<b><i>Details</i></b> .....	6
<b><i>Harmonies</i></b> .....	12
<b><i>Previews</i></b> .....	24
<b><i>Color Blindness Simulation</i></b> .....	28
<b><i>CSS Examples</i></b> .....	31

# Color

**HunterLab(60.3717, 2.8827,  
9.3269)**

# Conversions

## Conversions Part 1

Format	Color
Hex	B59E95
RGB	181, 158, 149
RGB Percent	71%, 62%, 58%
CMY	0.2902, 0.3804, 0.4157
CMYK	0.00, 0.13, 0.18, 0.29
HSL	17°, 18%, 65%
HSV	17°, 18%, 71%
XYZ	36.7077, 36.4474, 33.5341
YIQ	163.8510, 16.5970, 2.0770

# Conversions

## Conversions Part 2

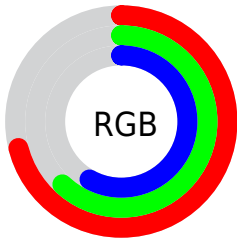
<b>Format</b>	<b>Color</b>
<b>R<sub>YB</sub></b>	181, 162, 149
Decimal	11902613
CIE Lab	66.86, 6.96, 7.80
CIE LCh	67, 10.454, 48.258
Yxy	36.4491, 0.3441, 0.3416
Android (android.graphics.Color)	4290092693 (0xFFB59E95)
YUV	163.8510, -7.3215, 15.0397
Hunter-Lab	60.3717, 2.8827, 9.3269

# Details

The HunterLab color  $60.3717, 2.8827, 9.3269$  is a light color, and the websafe version is hex  $999999$ . A complement of this color would be  $62.6338, -8.4741, -2.9362$ , and the grayscale version is  $60.8935, -3.2491, 3.3085$ .

A 20% lighter version of the original color is  $83.6091, 2.0595, 11.4896$ , and  $39.9830, 3.0868, 7.5563$  is the 20% darker color. If you saturate the color by 10%, you get  $56.3114, 6.9204, 12.2484$ , and if you desaturate by 10%, it is  $64.6126, -0.8939, 6.2057$ .

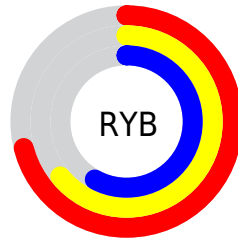
# Distribution



Red (71%)

Green (62%)

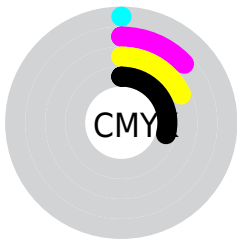
Blue (58%)



Red (71%)

Yellow (64%)

Blue (58%)

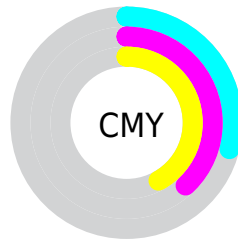


Cyan (0%)

Magenta (13%)

Yellow (18%)

Black (29%)



Cyan (29%)

Magenta (38%)

Yellow (42%)

# Brightness & Saturation Gradients

These gradients show how the HunterLab color 60.3717, 2.8827, 9.3269 changes by changing the brightness by 10 percent. The first figure shows a shift by +10% for each color and the second figure -10%.

Similar to the brightness gradients but the following saturation gradients show a change of the HunterLab color 60.3717, 2.8827, 9.3269 by changing the saturation by 10% instead.



■ 60.3717, 2.8827,  
9.3269

■ 60.3717, 2.8827,  
9.3269

181.9118, -0.9863,  
18.8831

■ 49.7807, 3.0815,  
8.3319

■ 83.5013, 2.3170,  
11.3495

■ 39.8925, 3.2199,  
7.3411

■ 95.9693, 1.9630,  
12.3795

■ 30.7626, 3.2872,  
6.3494

109.0027, 1.5657,  
13.4239

■ 22.4603, 3.2713,  
5.3463

122.5779, 1.1278,  
14.4836

■ 15.0781, 3.1539,  
4.3129

136.6741, 0.6518,  
15.5591

■ 8.7156, 3.0346,  
4.1841

151.2728, 0.1396,

0.0000, NaN, NaN

16.6507

0.0000, NaN, NaN

166.3570, -0.4070,  
17.7587

0.0000, NaN, NaN

■ 60.3717, 2.8827,  
9.3269

■ 60.3717, 2.8827,  
9.3269

■ 56.3114, 6.9204,  
12.2484

■ 64.6126, -0.8939,  
6.2057

■ 52.4512, 11.2427,  
14.9236

■ 69.0103, -4.4267,  
2.9165

■ 48.8201, 15.8543,  
17.2983

■ 73.5491, -7.7421,  
-0.5130

■ 45.4499, 20.7417,  
19.3059

■ 78.2150, -10.8639,  
-4.0622

■ 42.3762, 25.8587,  
20.8700

■ 82.9959, -13.8146,  
-7.7147

■ 39.6374, 31.1117,  
21.9125

■ 87.7856, -17.1539,  
-10.1049

■ 37.2714, 36.3455,  
22.3709

■ 92.1033, -23.5811,  
-4.5614

■ 35.3076, 41.3242,  
22.2772

■ 94.1084, -26.4807,  
-2.0791

■ 34.9071, 42.3950,  
22.2518

# Harmonies

## Analogous

The Analogous color harmony consists of three colors that are next to each other on the color wheel.



60.3731, 5.5561, 5.9057



60.3717, 2.8827, 9.3269



60.3731, -1.3833, 11.0771

# Triad

The Triadic color harmony groups three colors that are evenly spaced from another and form a triangle on the color wheel.



60.3731, 2.8808, 9.3278



60.3731, -11.7803, 5.0016



60.3731, -0.3810, -5.4163

# Complementary

The Complementary color scheme is a pair of colors which are on the opposite of each other on the color wheel.



60.3717, 2.8827, 9.3269



62.6338, -8.4741, -2.9362

# Split Complementary

Split-complementary colors differ from the complementary color scheme. The scheme consists of three colors, the original color and two neighbors of the complement color.



60.3731, -5.0441, -5.7048



60.3717, 2.8827, 9.3269



60.3731, -11.5305, 0.5439

# Square

The Square scheme is like the rectangle color scheme, but the four colors are evenly spaced on the color wheel.



60.3731, 2.8808, 9.3278



60.3731, -9.7899, 8.7095



60.3731, -9.0966, -3.4524



60.3731, 3.6338, -2.6919



# Rectangle

The Rectangle color scheme consists of four colors that form a rectangle on the color wheel.



60.3717, 2.8827, 9.3269



60.3731, -4.5109, 11.1549



60.3731, -9.0966, -3.4524



60.3731, -1.9274, -5.8086

# Sweetspot

The Sweet Spot groups the original color and five complimentary colors.



60.3731, 2.8808, 9.3278



87.9774, -2.4532, 7.1823



58.5796, 11.1294, -3.4504



40.7137, -0.9859, 3.4787



95.4677, -5.0939, 5.1869



42.2927, -2.2566, 2.2978



# Same Dimension

The Same Dimension uses a secret algorithm to generate beautiful new colors.



60.3731, 2.8808, 9.3278



78.7705, 5.7976, 13.9524



64.8738, -4.7701, 13.9046



29.8022, -0.1375, 3.1372



29.1608, 34.6809, 18.5759



6.0732, 3.8095, 3.8090



# Inverse Universe

The Inverse Universe completely reimagines the original color for something new.



62.6338, -8.4741, -2.9362



82.4050, -12.4791, -5.7734



58.0173, -0.9163, -8.9413



30.3633, -2.9511, 0.0952



36.6625, -9.0429, -26.3040



7.1805, -2.5595, -3.4498



# Previews

## White Background



This preview shows how the HunterLab color 60.3717, 2.8827, 9.3269 looks on a white background.

## Color Contrast Check

Large Text (above 18pt) WCAG AA × Fail

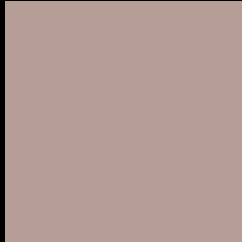
Any Text WCAG AA × Fail

Large Text (above 18pt) WCAG AAA × Fail

Any Text WCAG AAA × Fail



# Black Background



This preview shows how the HunterLab color 60.3717, 2.8827, 9.3269 looks on a black background.

## Color Contrast Check

Large Text (above 18pt) WCAG AA ✓ Pass

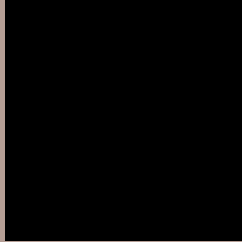
Any Text WCAG AA ✓ Pass

Large Text (above 18pt) WCAG AAA ✓ Pass

Any Text WCAG AAA ✓ Pass

If you want to check with other color combinations, try the [Color Contrast Checker](#).

## HunterLab 60.3717, 2.8827, 9.3269 Background



This preview shows how black text looks on a background with the HunterLab color 60.3717, 2.8827, 9.3269.



This preview shows how white text looks on a background with the HunterLab color 60.3717, 2.8827,



# Color Blindness Simulation

Color vision deficiency is a very complex topic, and I could not describe the different causes any better than Wikipedia does, so if you want to learn more, you should check out their [article about color blindness](#).

## Dichromacy



### Original Color

60.3717, 2.8827, 9.3269

### Protanopia

60.3323, -3.0516, 8.3507

### Deuteranopia

60.3939, 4.4036, 9.3775



## Tritanopia

60.2495, 7.8114, 1.2852

# Trichromacy



## Original Color

60.3717, 2.8827, 9.3269

## Protanomaly

60.4781, -1.1078, 8.9596

## Deuteranomaly

60.2919, 4.0615, 9.2614

## Tritanomaly

60.2163, 5.8573, 4.4615

# Monochromacy



## Original Color

60.3717, 2.8827, 9.3269

## Achromatopsia

60.9293, -3.2510, 3.3104

## Achromatomaly

60.7371, -1.2069, 5.3854

# CSS Examples

## Text

The CSS property to change the color of the text to HunterLab 60.3717, 2.8827, 9.3269 is called "color". The color property can be set on classes, ids or directly on the HTML element.

This example shows how text in the color `rgb(181, 158, 149)` looks like.

```
.text, #text, p{  
    color:rgb(181, 158, 149)  
}
```

If you want to add a text shadow in that color use the text-shadow property, you can generate a text shadow directly with our [CSS Text Shadow Generator](#).

Here you see how black text with a 4 pixel rgb(181, 158, 149) colored shadow looks like.

```
.shadow{ text-shadow: 4px 4px 2px rgb(181, 158, 149) }
```

## Border

The CSS property to change the border of an element to HunterLab 60.3717, 2.8827, 9.3269 is called "border". The border property can be set on classes, ids or directly on the HTML element.

This example shows the color as border, it can be applied via the CSS property "border" or "border-color".

```
.border, #border, table{ border:4px solid rgb(181, 158, 149) }
```



If only the border color should be changed use the property `border-color`.

```
.border{ border-color:rgb(181, 158, 149) }
```

If you want to add a box shadow in that color use:

Here you see how a box with a 4 pixel `rgb(181, 158, 149)` colored shadow looks like.

```
.boxshadow{ -moz-box-shadow:4px 4px 4px 4px rgb(181, 158, 149); -webkit-box-shadow:4px 4px 4px 4px rgb(181, 158, 149); box-shadow:4px 4px 4px 4px rgb(181, 158, 149) }
```

# Background

The CSS property to change the background color of an element to HunterLab 60.3717, 2.8827, 9.3269 is called "background". The background property can be set on classes, ids or directly on the HTML element.

```
.background, #background, body{  
background: rgb(181, 158, 149) }
```

If only the background color should be changed can be used:

```
.background{ background-color: rgb(181,  
158, 149) }
```

This example shows the color as background, it is applied via the CSS property "background".

To optimize and compress your CSS code, you can use our [online CSS compressor and optimizer](#) based on csstidy. If you want to create a linear or radial gradient as background or border, check our [CSS Gradient Generator](#).

Hey! You found this booklet interesting? Support Converting Colors with the new Membership Option!

The pro membership hides all ads, plus gives you double the colors in the color bucket, and more awesome pro features!

**[Learn more, Memberships starting at \\$2.50/m!](#)**

**Follow me  
on Twitter!**

@ConvertingColor